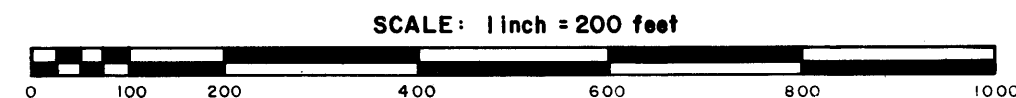


# ANOKA COUNTY HIGHWAY RIGHT-OF-WAY PLAT NO. 3

## County Highway Project No. SAP 02-623-02



The Board of County Commissioners of Anoka County, Minnesota, pursuant to a Board Resolution dated July 27, 1976, is hereby designating the definite location of the Right of Way of County State Aid Highway No. 23, lying northerly of the South Line of Section 22, Township 32, Range 22, and westerly of the westerly right-of-way line of Interstate Highway No. 35, in the Township of Columbus.

That portion of said highway located in the South Half of Section 14, the South Half of Section 15, Section 22, the North Half of Section 23, and the North Half of Section 24, all in Township 32, Range 22, Anoka County, Minnesota as shown on this plat effected by the County of Anoka, Department of Highways, is hereby certified to be the official plat of that portion of said County State Aid Highway within said Sections pursuant to Minnesota Statutes 160.085.

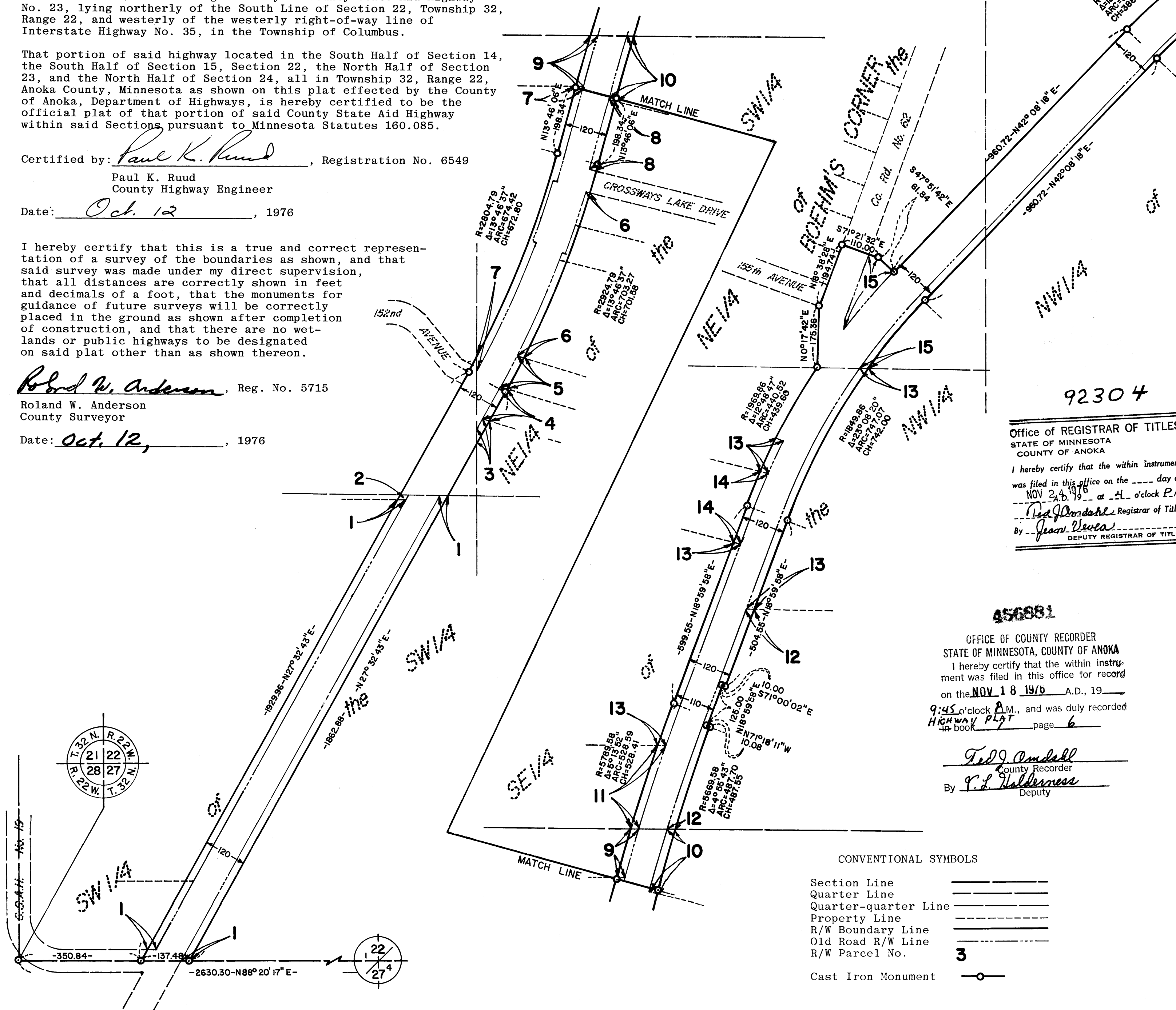
Certified by: Paul K. Ruud, Registration No. 6549  
Paul K. Ruud  
County Highway Engineer

Date: Oct. 12, 1976

I hereby certify that this is a true and correct representation of a survey of the boundaries as shown, and that said survey was made under my direct supervision, that all distances are correctly shown in feet and decimals of a foot, that the monuments for guidance of future surveys will be correctly placed in the ground as shown after completion of construction, and that there are no wetlands or public highways to be designated on said plat other than as shown thereon.

Roland W. Anderson, Reg. No. 5715  
Roland W. Anderson  
County Surveyor

Date: Oct. 12, 1976



92304  
Office of REGISTRAR OF TITLES  
STATE OF MINNESOTA  
COUNTY OF ANOKA  
I hereby certify that the within instrument was filed in this office on the 18 day of NOV 1976 at 4 o'clock P.M.  
Neil J. Orosdahl, Registrar of Titles  
By Jean Wever, DEPUTY REGISTRAR OF TITLES

456981  
OFFICE OF COUNTY RECORDER  
STATE OF MINNESOTA, COUNTY OF ANOKA  
I hereby certify that the within instrument was filed in this office for record on the NOV 18 1976 A.D., 1976  
9:45 o'clock A.M., and was duly recorded in book 197 page 6  
Ted J. Orosdahl  
County Recorder  
By P. L. Anderson  
Deputy

- CONVENTIONAL SYMBOLS
- Section Line \_\_\_\_\_
  - Quarter Line \_\_\_\_\_
  - Quarter-quarter Line \_\_\_\_\_
  - Property Line \_\_\_\_\_
  - R/W Boundary Line \_\_\_\_\_
  - Old Road R/W Line \_\_\_\_\_
  - R/W Parcel No. **3**
  - Cast Iron Monument

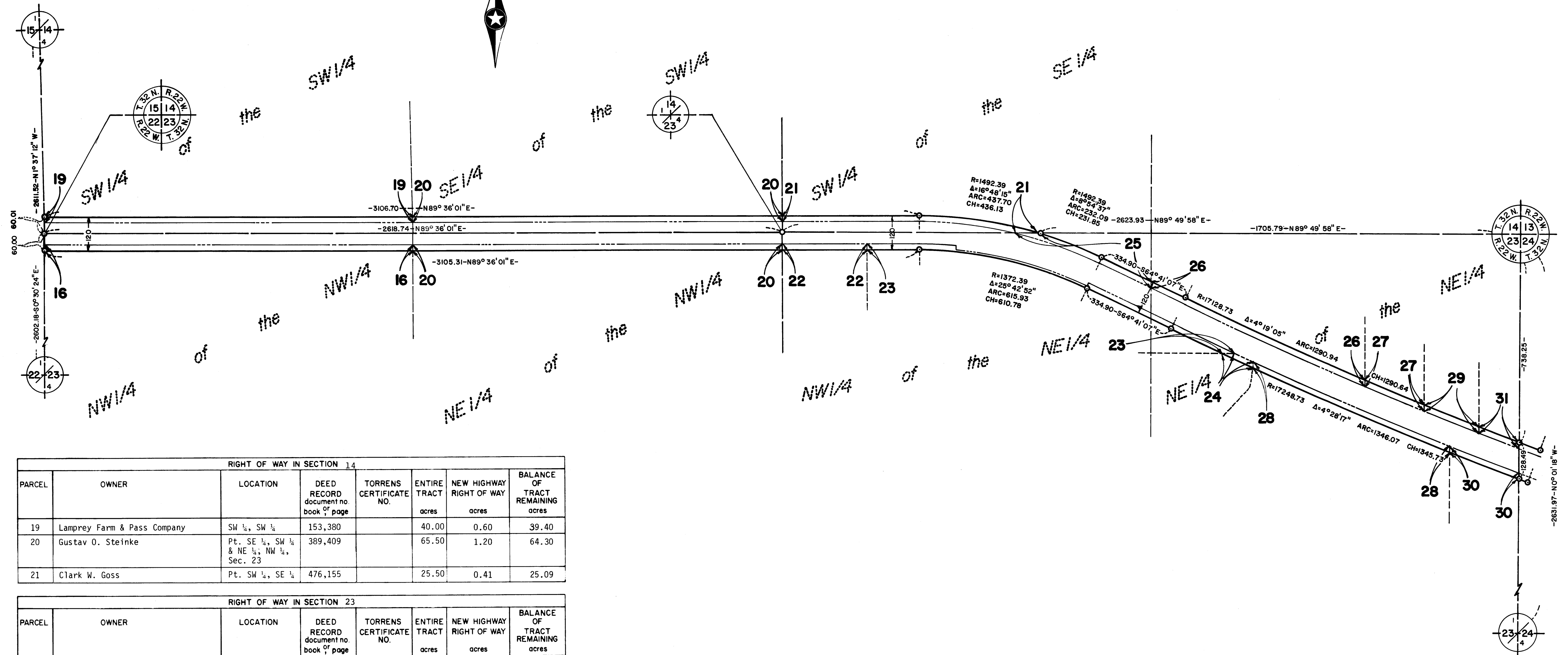
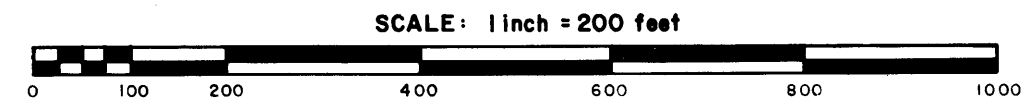
RIGHT OF WAY IN SECTION 22							
PARCEL	OWNER	LOCATION	DEED RECORD document no. book of page	TORRENS CERTIFICATE NO.	ENTIRE TRACT acres	NEW HIGHWAY RIGHT OF WAY acres	BALANCE OF TRACT REMAINING acres
1	Frederick J. Hauble	S 1/2, SW 1/4	220,039 892,035		80.00	1.38	78.62
2	Raymond J. Marsh	Pt. NW 1/4, SW 1/4	403,413		6.97	0.01	6.96
3	Anthony Leroy Stace	Pt. NE 1/4, SW 1/4	436855		1.70	0.02	1.68
4	Joseph W. Stafki, Sr.	Pt. NE 1/4, SW 1/4	1143,598		1.34	0.05	1.29
5	D & M Services, Inc.	Pt. NE 1/4, SW 1/4	1070,371		1.34	0.05	1.29
6	Ethel E. Manthey	Pt. NE 1/4, SW 1/4	434808 434809		14.58	0.19	14.39
7	Eugene C. Sternberg	Pt. NE 1/4, SW 1/4	1022,481		3.25	0.35	2.90
8	Arthur Leroy Olive	Pt. NE 1/4, SW 1/4	970,293 1132,110		10.40	0.09	10.31
9	Lee A. Weitzel	Pt. NE 1/4, SW 1/4	1149,260		1.25	0.07	1.18
10	Arthur Leroy Olive	Pt. NE 1/4, SW 1/4	970,293 1132,112		1.42	0.09	1.33
11	Lois M. Shelander	Pt. SE 1/4, NW 1/4	374,375 718,396		2.00	0.11	1.89
12	Fern E. Mabry	Pt. SE 1/4, NW 1/4	420,526 937,303		5.00	0.28	4.72
13	Maurice F. Boehm	Pt. E 1/2, NW 1/4	303,381		53.70	0.68	53.02
14	Alois J. Brunner	Pt. SE 1/4, NW 1/4	567,143		1.90	0.10	1.80
15	Glen E. Miles	Pt. NE 1/4, NW 1/4 & NW 1/4, NE 1/4	890,519		47.00	1.15	45.85
16	Joseph Bronczyk	NE 1/4, NE 1/4 & NW 1/4, NW 1/4, Sec. 23, T. 32, R. 22	117,389		80.00	0.96	79.04

RIGHT OF WAY IN SECTION 15							
PARCEL	OWNER	LOCATION	DEED RECORD document no. book of page	TORRENS CERTIFICATE NO.	ENTIRE TRACT acres	NEW HIGHWAY RIGHT OF WAY acres	BALANCE OF TRACT REMAINING acres
17	Phillip L. Anderson and Lenore A. Ehrlichman	SW 1/4, SE 1/4	767,603 1101,447		40.00	0.09	39.91
18	Jon J. Bauman	SE 1/4, SE 1/4	1038,261		40.00	0.52	39.48

- PROCEDURAL STATEMENTS
- The methods and equipment used in the control surveys for this plat and the checks made on monument location were accomplished with electronic distance measuring devices.
  - Certificates of location are on file in the Office of the County Surveyor for the section corner monuments shown on this plat.
  - For details of the control survey and land survey, contact the County Surveyor's Office for survey of R/W Plat No. 3, State Aid Project No. 02-623-02.
  - Bearings shown are assumed.

# ANOKA COUNTY HIGHWAY RIGHT-OF-WAY PLAT NO. 3

County Highway Project No. SAP 02-623-02

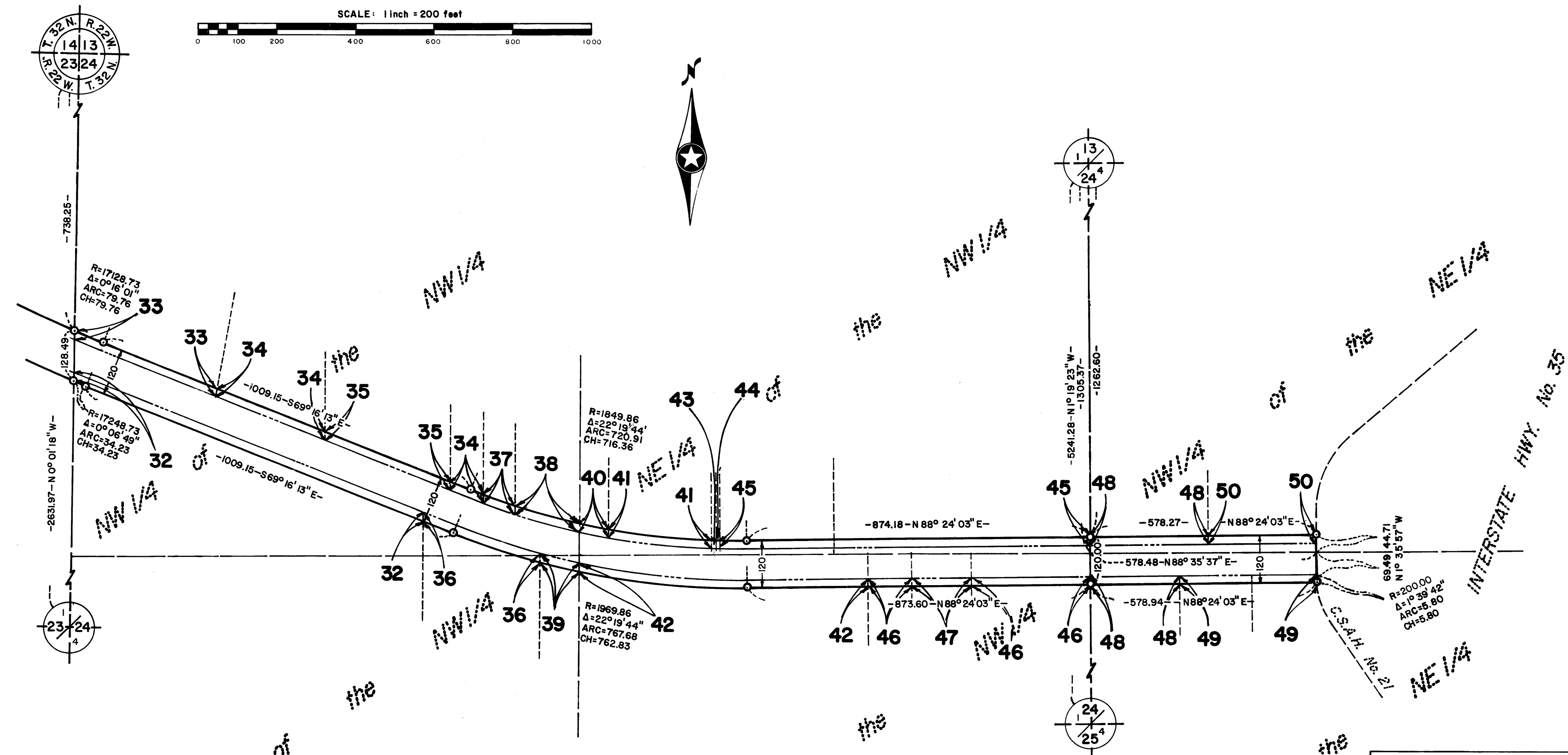


RIGHT OF WAY IN SECTION 14							
PARCEL	OWNER	LOCATION	DEED RECORD document no. book of page	TORRENS CERTIFICATE NO.	ENTIRE TRACT acres	NEW HIGHWAY RIGHT OF WAY acres	BALANCE OF TRACT REMAINING acres
19	Lamprey Farm & Pass Company	SW 1/4, SW 1/4	153,380		40.00	0.60	39.40
20	Gustav O. Steinke	Pt. SE 1/4, SW 1/4 & NE 1/4, NW 1/4, Sec. 23	389,409		65.50	1.20	64.30
21	Clark W. Goss	Pt. SW 1/4, SE 1/4	476,155		25.50	0.41	25.09

RIGHT OF WAY IN SECTION 23							
PARCEL	OWNER	LOCATION	DEED RECORD document no. book of page	TORRENS CERTIFICATE NO.	ENTIRE TRACT acres	NEW HIGHWAY RIGHT OF WAY acres	BALANCE OF TRACT REMAINING acres
16	SEE Sec. 22						
20	SEE Sec. 14						
22	Donald Vindeen	Pt. NW 1/4, NE 1/4	348,433		9.09	0.14	8.95
23	Theodore G. Vogel	Pt. N 1/2, NE 1/4	731,485		7.07	0.51	6.56
24	Benjamin C. Andersen	Pt. N 1/2, NE 1/4	176,289		5.35	0.05	5.30
25	Benjamin C. Andersen	Pt. N 1/2, NE 1/4	176,289		23.16	0.21	22.95
26	Leona Prahm	Pt. NE 1/4, NE 1/4	841,263		6.10	0.38	5.72
27	Gerald T. McKenzie	Pt. NE 1/4, NE 1/4	1090,441		5.00	0.11	4.89
28	Edward J. Knowlan	Pt. N 1/2, NE 1/4	482,519		21.04	0.35	20.69
29	Eugene E. Guttsen	Pt. NE 1/4, NE 1/4	572,099		1.19	0.10	1.09
30	Brian C. Ciccone	Pt. E 1/2, NE 1/4	1160,348		5.00	0.12	4.88
31	Joseph Edward Simbeck, Sr.	Pt. NE 1/4, NE 1/4	1008,225		2.00	0.07	1.93

# ANOKA COUNTY HIGHWAY RIGHT-OF-WAY PLAT NO. 3

County Highway Project No. SAP 02-623-02



RIGHT OF WAY IN SECTION 24							
PARCEL	OWNER	LOCATION	DEED RECORD document no. book of page	TORRENS CERTIFICATE NO.	ENTIRE TRACT acres	NEW HIGHWAY RIGHT OF WAY acres	BALANCE OF TRACT REMAINING acres
32	John B. Macho	Pt. W 1/2, NW 1/4	809,475		19.90	0.45	19.45
33	Benjamin C. Andersen	Pt. NW 1/4, NW 1/4	1051,635		10.01	0.18	9.83
34	Matthew L. Mulvihill	Pt. NW 1/4, NW 1/4	538,029 894,480		15.05	0.18	14.87
35	Robert A. Peloquin	Pt. NW 1/4, NW 1/4	811,163		4.00	0.16	3.84
36	Elwood O. Craig	Pt. W 1/2, NW 1/4	715,573		3.00	0.15	2.85
37	Allen E. Tuominen	Pt. NW 1/4, NW 1/4	769,386		1.04	0.04	1.00
38	Gordon George Ostrowski	Pt. NW 1/4, NW 1/4	798,407		2.00	0.08	1.92
39	Frank M. Preiner	Pt. SW 1/4, NW 1/4	412,407		3.00	0.05	2.95
40	Axel V. Laursen & Mabel V. Laursen	Pt. NE 1/4, NW 1/4		37506	0.29	0.03	0.26
41	Axel V. Laursen & Mabel V. Laursen	Pt. NE 1/4, NW 1/4		38415	4.31	0.12	4.19
42	Bernard N. Ashbach, Sr.	Pt. NE 1/4, NW 1/4		39278	23.45	0.34	23.11
43	Michael F. Flor, Jr. & Jacqueline M. Flor	Pt. NE 1/4, NW 1/4		35892	3.62	0.01	3.61
44	Edward Holstrom & Albena T. Holstrom	Pt. NE 1/4, NW 1/4		35895	0.12	0.01	0.11
45	Henry G. Houle & Elaine H. Houle Lloyd P. Miller & Shirley M. Miller James A. Meyer & Rosemary L. Meyer	Pt. NE 1/4, NW 1/4		37469	19.15	0.43	18.72
46	Crown Oil Company, Inc.	Pt. SE 1/4, NW 1/4		33623	17.15	0.19	16.96
47	Crown Oil Company, Inc.	Pt. SE 1/4, NW 1/4		33656	0.21	0.07	0.14
48	Robert H. Karatz	Pt. W 1/2, NE 1/4	1075,076		65.80	0.24	65.56
49	Neil L. Macheledt	Pt. SW 1/4, NE 1/4	1108,413		5.00	0.16	4.84
50	Pasco Marketing, Inc.	Pt. NE 1/4	1036,486		1.30	0.13	1.17