

# CITY OF ANDOVER HIGHWAY RIGHT-OF-WAY PLAT NO. 4

CITY OF ANDOVER                      COUNTY OF ANOKA

PARCEL	OWNER	LOCATION: BY PARCEL IDENTIFICATION NUMBER (P.I.N)	DEED RECORD DOCUMENT NUMBER	TORRENS CERTIFICATE NUMBER	ENTIRE TRACT ACRES	EXISTING RIGHT OF WAY ACRES	NEW HIGHWAY RIGHT OF WAY ACRES	TEMPORARY EASEMENT ACRES	TEMP. EASE. EXPIRES ON DATE	BALANCE OF TRACT REMAINING ACRES
1.	Andover Economic Development Authority	34-32-24-32-0006	450747		3.14		0.24			2.90
2.	Andover Economic Development Authority	34-32-24-32-0005	450748		6.29		0.48			5.81
3.	Richard A. Heidelberger Clayton J. Steffsen	34-32-24-31-0006	758081		1.16		0.45			0.71
4.	Tax Ladies Inc.	34-32-24-31-0014	1148925		0.47		0.01			0.46
5.	John P. Imre Sheila M. Imre	34-32-24-31-0005	1011633		1.0		0.09			0.91
6.	Marian P. Heidelberger	34-32-24-31-0012	1011633		0.63		0.15			0.48
7.	Marian P. Heidelberger	34-32-24-31-0022	614907		8.31		0.08			8.23
8.	State of Minnesota	34-32-24-31-0011	960194		12.29		1.90			10.37
9.	Andover Economic Development Authority	34-32-24-31-0009	1178061		4.68		0.94			3.74

I hereby certify that this is a true and correct representation of a survey of the boundaries as shown and that said survey was made under my direct supervision; that all distances are correctly shown in feet and decimals of a foot; that the monuments for the guidance of future surveys have been correctly placed in the ground as shown; the Right of Way boundary lines are designated on the plat and it was prepared pursuant to Chapter 505.1793, Minnesota Statutes.

This 7<sup>th</sup> day of December, 1995.

Milton E. Hyland  
Milton E. Hyland, Land Surveyor  
Minnesota Registration No. 20262

That portion of Commercial Boulevard located in Section 34, Township 32, Range 24, as shown on this plat effected by the City of Andover, is certified to be the official plat of that portion of said street within said section pursuant to Minnesota Statutes Chapter 505.1793. The foregoing plat was accepted and approved by the City Council of Andover, Minnesota at a regular meeting thereof held this 19<sup>th</sup> day of December, 1995.

CITY OF ANDOVER, MINNESOTA

By J. E. McKelvey, Mayor

By Dustin Bell, Clerk



Checked and approved this 3<sup>rd</sup> day of JANUARY, 1996.

By MERLYN D. ANDERSON  
Anoka County Surveyor  
by Larry D. Han deputy

# 1198424

OFFICE OF COUNTY RECORDER  
STATE OF MINNESOTA, COUNTY OF ANOKA

I hereby certify that the within instrument was filed in this office for record on the 3<sup>rd</sup> of Jan, A.D., 1996 at 4:30 o'clock P.M., and was duly recorded in book Lot page 2 misc.

Edmond M. Traut  
County Recorder

By JLS  
Deputy

HY - LAND SURVEYING, P. A.  
LAND SURVEYORS

# CITY OF ANDOVER HIGHWAY RIGHT-OF-WAY PLAT NO. 4

CITY OF ANDOVER

COUNTY OF ANOKA

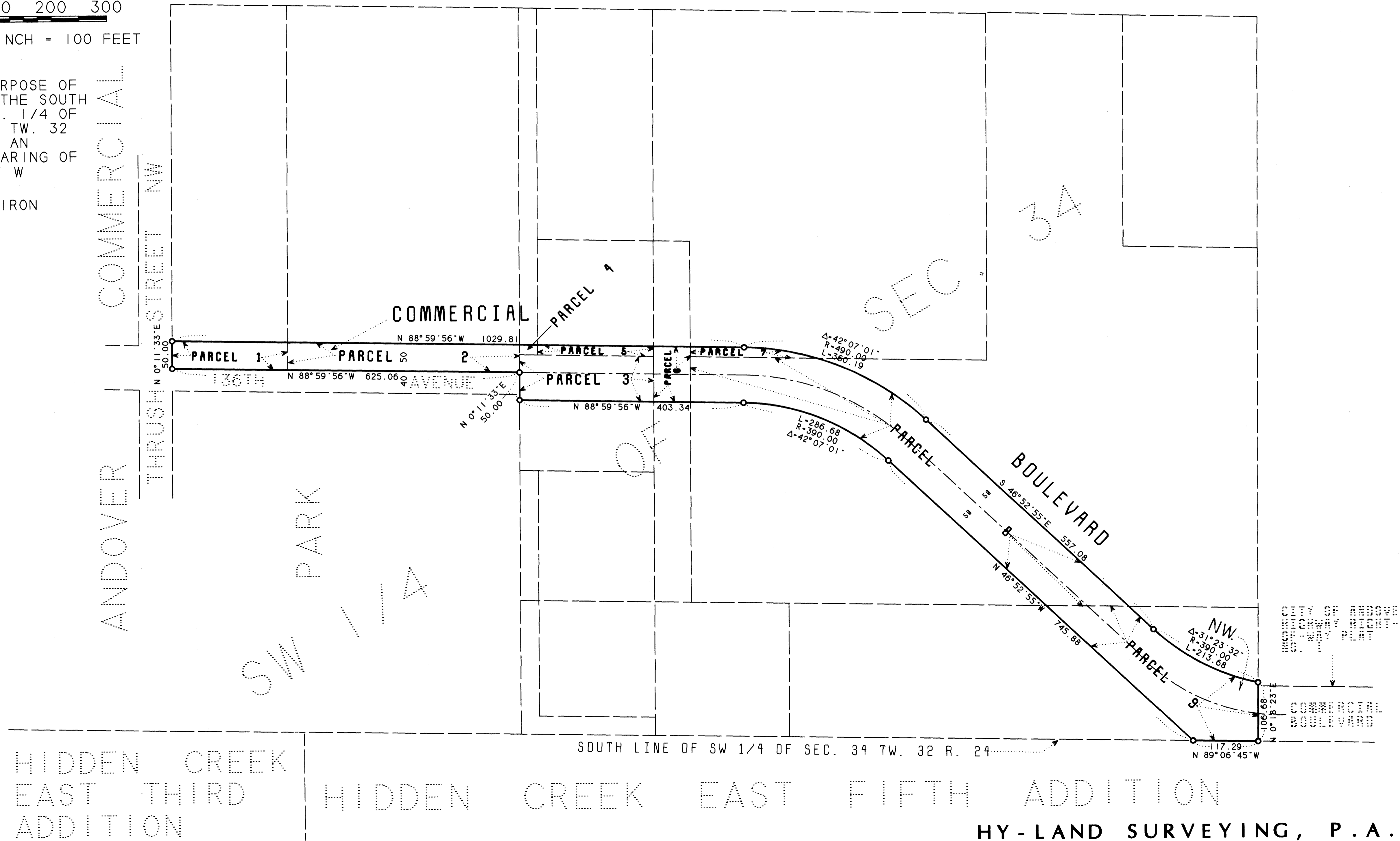


0 100 200 300

SCALE: 1 INCH = 100 FEET

FOR THE PURPOSE OF THIS PLAT THE SOUTH LINE OF SW. 1/4 OF SEC. 34 TW. 32 R. 24. HAS AN ASSUMED BEARING OF N 89°06'45" W

○ DENOTES IRON MONUMENT



HY-LAND SURVEYING, P.A.  
LAND SURVEYORS