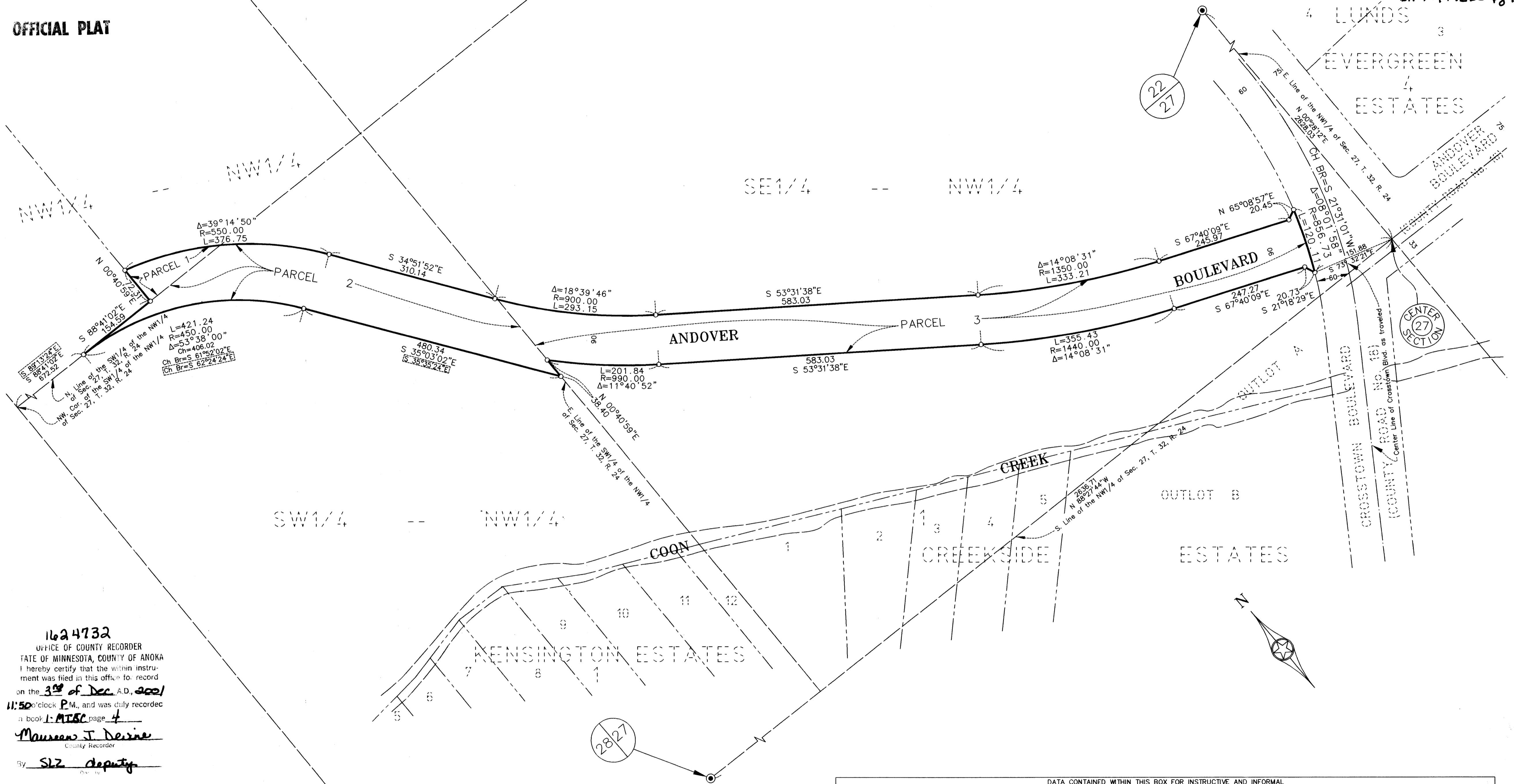


CITY OF ANDOVER HIGHWAY RIGHT-OF-WAY PLAT NO. 5

City of Andover
County of Anoka
Sec. 27, T. 32, R. 24
BK. 1 of MISC pg 4

OFFICIAL PLAT



1624732
OFFICE OF COUNTY RECORDER
STATE OF MINNESOTA, COUNTY OF ANOKA
I hereby certify that the within instrument was filed in this office for record on the 3rd of Dec. A.D., 2001 at 11:50 o'clock P.M., and was duly recorded in book 1 of MISC page 4
Maurice J. Devine
County Recorder
By SLZ deputy

I hereby certify that this is a true and correct representation of a survey of the boundaries as shown and that said survey was made under my direct supervision; that all distances are correctly shown in feet and decimals of a foot; that the monuments for the guidance of future surveys have been correctly placed in the ground as shown; the Right of Way boundary lines are designated on the plat and it was prepared pursuant to Chapter 505.1793, Minnesota Statutes.

Jeffrey M. Cain This 13th day of November, 2001
Jeffrey M. Cain, Land Surveyor
Minnesota Registration No. 12251

That portion of Andover Boulevard located in Section 27, Township 32, Range 24, as shown on this plat effected by the City of Andover is certified to be the official plat of that portion of said boulevard within said section pursuant to Minnesota Statutes Chapter 505.1793. The foregoing plat was accepted and approved by the City Council of Andover, Minnesota at a regular meeting thereof held this 3rd day of July, 2001.

CITY OF ANDOVER, MINNESOTA
By Mark P. Amundson Mayor By Antonia Vell Clerk
Checked and approved this 3rd day of DECEMBER, 2001
By Terry D. Cain
Anoka County Surveyor

Receipt No 200115107 \$55.00

- DENOTES PROPERTY LINE.
- - - DENOTES SECTION, QUARTER OR SIXTEENTH LINE.
- DENOTES R/W BOUNDARY LINE.
- - - DENOTES OLD ROAD R/W LINE.
- - - DENOTES TEMPORARY EASEMENT LINE.
- DENOTES RIGHT-OF-WAY MONUMENT.

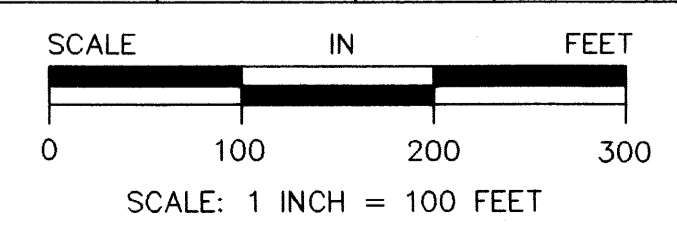
NOTE: FOR THE PURPOSES OF THIS PLAT, THE NORTH LINE OF THE SW1/4 OF THE NW1/4 OF SEC. 34, T. 32, R. 24 IS ASSUMED TO HAVE A BEARING OF S 88°41'02"E.

[S 89°13'24"E] DENOTES A BEARING BASED ON AN ASSUMED BEARING OF S 89°13'24"E ALONG THE NORTH LINE OF THE SW1/4 OF THE NW1/4 OF SEC. 27, T. 32, R. 24, PER DOC. NO. 1574379.

DATA CONTAINED WITHIN THIS BOX FOR INSTRUCTIVE AND INFORMAL PURPOSES ONLY

RIGHT-OF-WAY IN SECTION 27, TOWNSHIP 32, RANGE 24

PARCEL	OWNER	LOCATION: BY PARCEL IDENTIFICATION NUMBER (P.I.N.)	DEED RECORD DOCUMENT NUMBER	TORRENS CERTIFICATE NUMBER	ENTIRE TRACT ACRES	EXISTING RIGHT OF WAY ACRES	NEW HIGHWAY RIGHT OF WAY ACRES	TEMPORARY EASEMENT ACRES	TEMP. EASE. EXPIRES ON DATE	BALANCE OF TRACT REMAINING ACRES
1	Anoka Hennepin Ind. School Dist. No. 11	NA	1574380		14.600	0.000	0.164			14.436
2	Anoka Hennepin Ind. School Dist. No. 11	NA	1574379		2.879	0.000	1.584			1.295
3	Anoka Hennepin Ind. School Dist. No. 11	NA	1574379		36.620	2.164	2.967			31.489



CAINE & ASSOCIATES
LAND SURVEYORS
A SUBSIDIARY OF RLK-KUUSISTO, LTD.
17720 Highway 65 N.E. - Ham Lake, Minnesota 55304
763-434-7646