

REVISION OF SHEET 3 ANOKA COUNTY HIGHWAY RIGHT-OF-WAY PLAT NO. 6

County Highway Project No. SAP 02-618-09

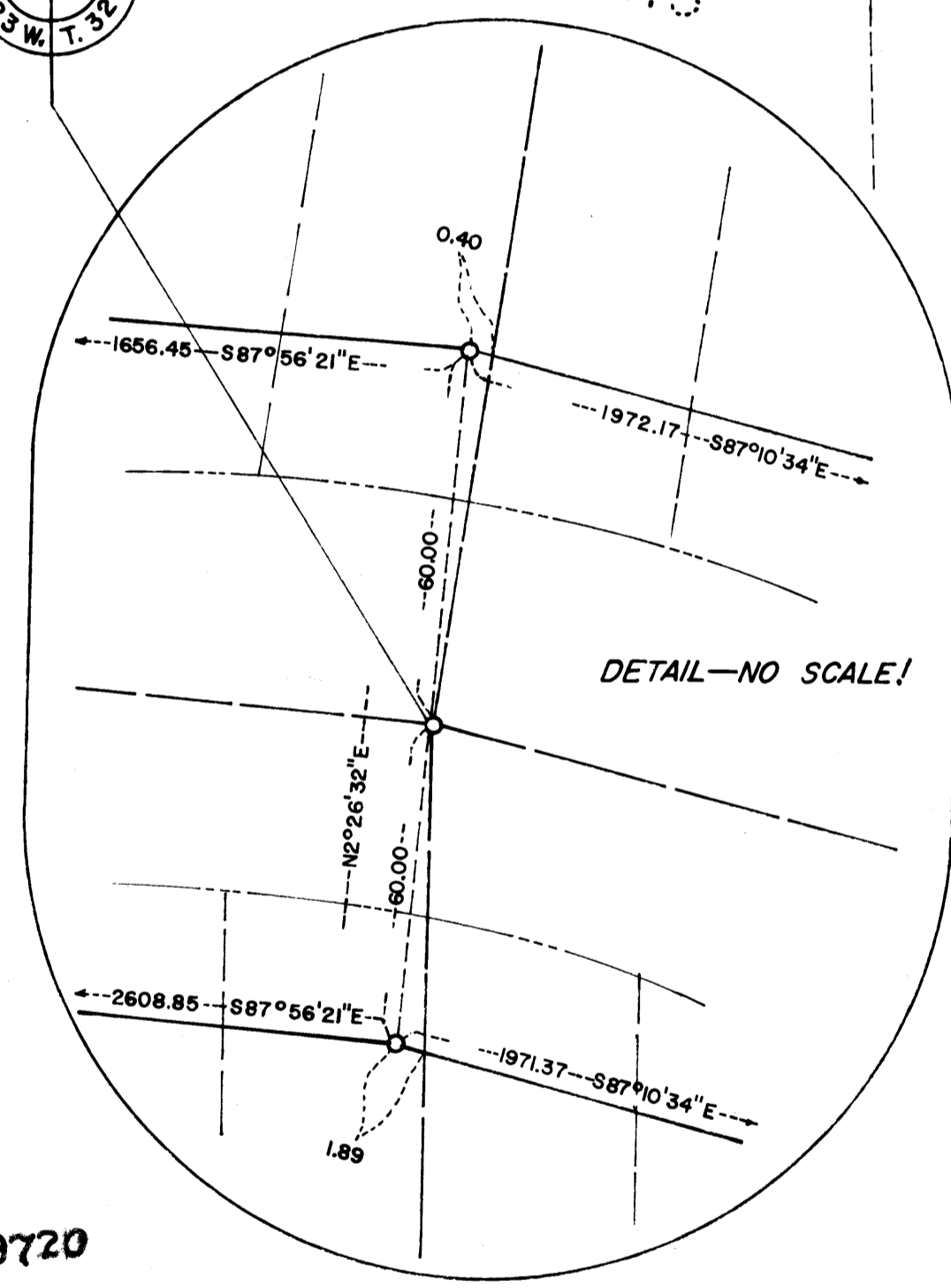
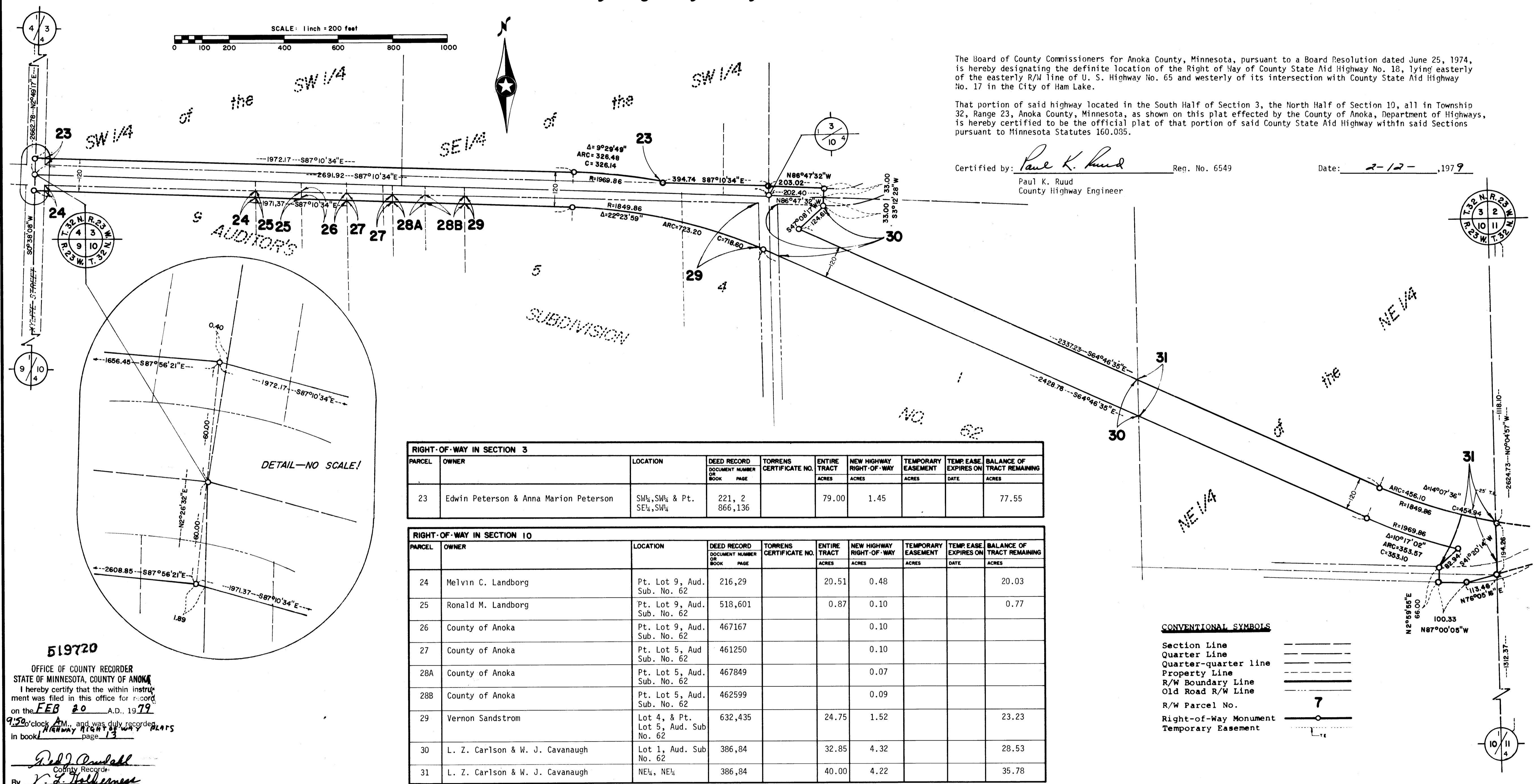
The Board of County Commissioners for Anoka County, Minnesota, pursuant to a Board Resolution dated June 25, 1974, is hereby designating the definite location of the Right of Way of County State Aid Highway No. 18, lying easterly of the easterly R/W line of U. S. Highway No. 65 and westerly of its intersection with County State Aid Highway No. 17 in the City of Ham Lake.

That portion of said highway located in the South Half of Section 3, the North Half of Section 10, all in Township 32, Range 23, Anoka County, Minnesota, as shown on this plat effected by the County of Anoka, Department of Highways, is hereby certified to be the official plat of that portion of said County State Aid Highway within said Sections pursuant to Minnesota Statutes 160.035.

Certified by: *Paul K. Ruud*
Paul K. Ruud
County Highway Engineer

Reg. No. 6549

Date: 2-12, 1979



CONVENTIONAL SYMBOLS

- Section Line
- Quarter Line
- Quarter-quarter line
- Property Line
- R/W Boundary Line
- Old Road R/W Line
- R/W Parcel No.
- Right-of-Way Monument
- Temporary Easement

PROCEDURAL STATEMENTS

1. The methods and equipment used in the control surveys for this plat and the checks made on monument location were accomplished with electronic distance measuring devices.
2. Certificates of location are on file in the Office of the County Surveyor for the section corner monuments shown on this plat.
3. For the details of the control survey and land survey contact the County Surveyor's Office for survey of R/W Plat No. 6 Project No. S.A.P. 02-618-09
4. Bearings shown are assumed.

519720
OFFICE OF COUNTY RECORDER
STATE OF MINNESOTA, COUNTY OF ANOKA
I hereby certify that the within instrument was filed in this office for record on the FEB 20 A.D., 1979
at 9:52 o'clock A.M. and was duly recorded in book 13 page 13
Roland W. Anderson
County Recorder
By *V. L. Halverson*
Deputy

I hereby certify that this is a true and correct representation of a survey of the boundaries as shown, and that said survey was made under my direct supervision, that all distances are shown in feet and hundredths of a foot, that the monuments for the guidance of future surveys will be correctly placed in the ground as shown after the completion of construction, and that there are no wet lands or public highways to be designated on said plat other than as shown thereon.
Roland W. Anderson
Roland W. Anderson
Anoka County Surveyor
Registration No. 5715
Date: Feb. 12, 1979