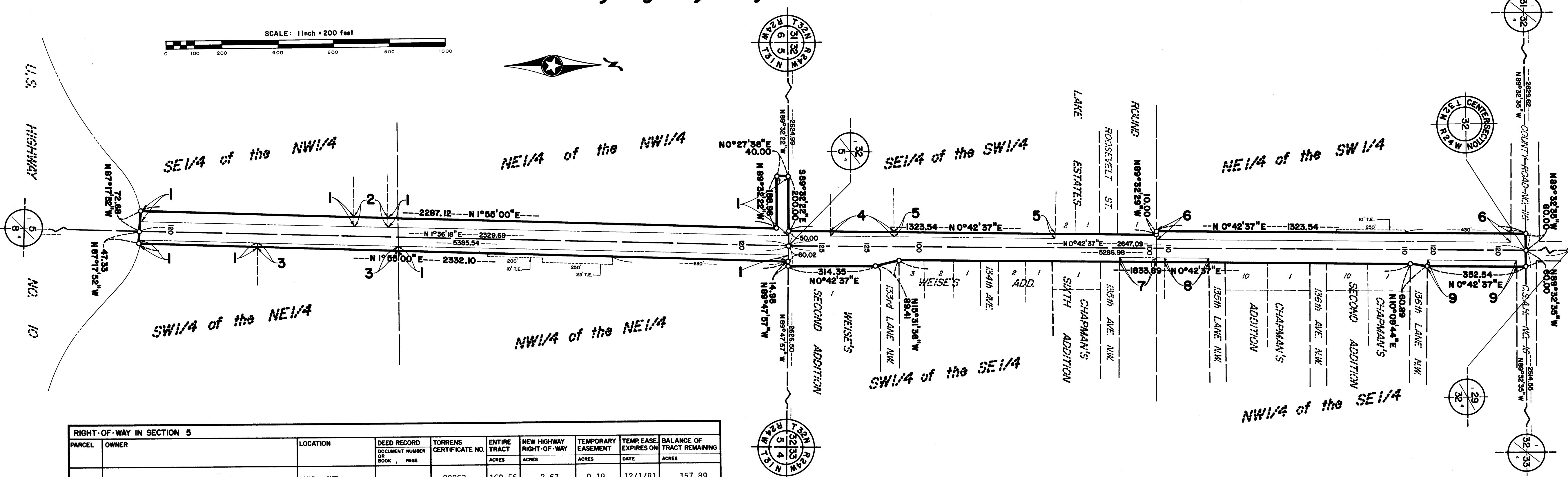


ANOKA COUNTY HIGHWAY RIGHT-OF-WAY PLAT NO. 10

County Highway Project No. SAP 02-609-02



PARCEL	OWNER	LOCATION	DEED RECORD DOCUMENT NUMBER OR BOOK, PAGE	TORRENS CERTIFICATE NO.	ENTIRE TRACT ACRES	NEW HIGHWAY RIGHT-OF-WAY ACRES	TEMPORARY EASEMENT ACRES	TEMP. EASE. EXPIRES ON DATE	BALANCE OF TRACT REMAINING ACRES
1	Federal Cartridge Corporation, a Minnesota Corporation	NW¼, NE¼, NE¼, NW¼ Pt. SW¼, NE¼ S½, S½, NE¼ Pt. SE¼, NW¼		29863	160.56	2.67	0.19	12/1/81	157.89
2	Ervin L. Dryden and Marilyn Dryden, husband and wife	Pt. SE¼, NW¼	330, 37		1.00	0.07			0.93
3	William Emmans and Mabel Emmans, husband and wife	Pt. SW¼, NE¼	252, 507		9.00	0.32			8.68

PARCEL	OWNER	LOCATION	DEED RECORD DOCUMENT NUMBER OR BOOK, PAGE	TORRENS CERTIFICATE NO.	ENTIRE TRACT ACRES	NEW HIGHWAY RIGHT-OF-WAY ACRES	TEMPORARY EASEMENT ACRES	TEMP. EASE. EXPIRES ON DATE	BALANCE OF TRACT REMAINING ACRES
4	Mitchell J. Despen and Nila J. Despen, husband and wife	Pt. SE¼, SW¼	1126, 549		1.03	0.09			0.94
5	Stone Enterprises, Inc., a Minnesota Corporation	Pt. SE¼, SW¼	469, 189		28.47	0.36			28.11
6	Hutton and Rowe, Inc., a Minnesota Corporation	Pt. NE¼, SW¼	447947		22.25	0.79	0.06	12/1/81	21.46
7	John Arthur Quick and Janice R. Quick, husband and wife	Pt. W¼, SE¼	980, 556		0.83	0.06			0.77
8	Eugene Brown	Pt. NW¼, SE¼	1020, 176		0.92	0.06			0.86
9	Grace Lutheran Church of Anoka, Minnesota	Pt. NW¼, SE¼	780, 449		3.60	0.20			3.40

CONVENTIONAL SYMBOLS

Section Line ————
 Quarter Line ————
 Quarter-quarter line ————
 Property Line ————
 R/W Boundary Line ————
 Old Road R/W Line ————
 R/W Parcel No. **7**
 Right-of-Way Monument ————
 Temporary Easement ————

- PROCEDURAL STATEMENTS**
- The methods and equipment used in the control surveys for this plat and the checks made on monument location were accomplished with electronic distance measuring devices.
 - Certificates of location are on file in the Office of the County Surveyor for the section corner monuments shown on this plat.
 - For the details of the control survey and land survey, contact the County Surveyor's Office for survey of R/W Plat No. 10, Project No. SAP 02-609-02
 - Bearings shown are assumed.

501571

OFFICE OF COUNTY RECORDER
 STATE OF MINNESOTA, COUNTY OF ANOKA
 I hereby certify that the within instrument was filed in this office for record on the JUL 12 1978 A.D., 1978 at 3:25 o'clock P.M. and was duly recorded in book 100559 page 10

Redd Crandall
 County Recorder
 By *C. J. Hollmann*
 Deputy

THE BOARD OF COUNTY COMMISSIONERS OF ANOKA COUNTY, MINNESOTA, PURSUANT TO A BOARD RESOLUTION DATED, MAY 22, 1978, IS HEREBY DESIGNATING THE DEFINITE LOCATION OF THE RIGHT-OF-WAY OF COUNTY STATE AID HIGHWAY NO. 9, LYING IN THE CITY OF COON RAPIDS, THE CITY OF ANOKA AND THE CITY OF ANDOVER.

THAT PORTION OF SAID HIGHWAY LOCATED IN THE NORTH HALF OF SECTION 5, TOWNSHIP 31, RANGE 24, AND IN THE SOUTH HALF OF SECTION 32, TOWNSHIP 32, RANGE 24, ALL IN ANOKA COUNTY, MINNESOTA, AS SHOWN ON THIS PLAT EFFECTED BY THE COUNTY OF ANOKA, DEPARTMENT OF HIGHWAYS, IS HEREBY CERTIFIED TO BE THE OFFICIAL PLAT OF THE PORTION OF SAID COUNTY STATE AID HIGHWAY WITHIN SAID SECTIONS PURSUANT TO MINNESOTA STATUTES 160.085.

CERTIFIED BY: *Paul K. Ruud*, REGISTRATION NO. 6549
 PAUL K. RUUD
 COUNTY HIGHWAY ENGINEER

DATE: July 12, 1978

I HEREBY CERTIFY THAT THIS IS A TRUE AND CORRECT REPRESENTATION OF A SURVEY OF THE BOUNDARIES AS SHOWN, AND THAT SAID SURVEY WAS MADE UNDER MY DIRECT SUPERVISION, THAT ALL DISTANCES ARE CORRECTLY SHOWN IN FEET AND DECIMALS OF A FOOT, THAT THE MONUMENTS FOR THE GUIDANCE OF FUTURE SURVEYS WILL BE CORRECTLY PLACED IN THE GROUND AS SHOWN AFTER THE COMPLETION OF CONSTRUCTION, AND THAT THERE ARE NO WET LANDS OR PUBLIC HIGHWAYS TO BE DESIGNATED ON SAID PLAT OTHER THAN AS SHOWN THEREON.

Roland W. Anderson, REGISTRATION NO. 5715
 ROLAND W. ANDERSON
 ANOKA COUNTY SURVEYOR

DATE: July 12, 1978

Office of REGISTRAR OF TITLES
 STATE OF MINNESOTA
 COUNTY OF ANOKA
 I hereby certify that the within instrument was filed in this office on the JUL 12 1978 day of JULY 1978 at 3:25 o'clock P.M.
Redd Crandall, Registrar of Titles
 By *Jeanne Weira*
 DEPUTY REGISTRAR OF TITLES