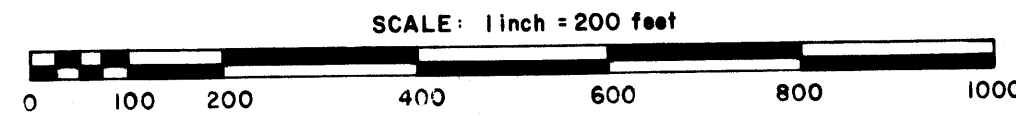


ANOKA COUNTY HIGHWAY RIGHT-OF-WAY PLAT NO. 15

County Highway Project No. 80-09-78



THE BOARD OF COUNTY COMMISSIONERS OF ANOKA COUNTY, MINNESOTA, PURSUANT TO A BOARD ACTION ON MAY 27, 1980 IS HEREBY DESIGNATING THE DEFINITE LOCATION OF THE RIGHT-OF-WAY OF PART OF COUNTY HIGHWAY NUMBER 78, LYING IN THE CITY OF COON RAPIDS.

THAT PORTION OF SAID HIGHWAY LOCATED IN SECTIONS 2,3,10 AND 11, ALL IN TOWNSHIP 31 RANGE 24, ANOKA COUNTY, MINNESOTA, AS SHOWN ON THIS PLAT EFFECTED BY THE COUNTY OF ANOKA, DEPARTMENT OF HIGHWAYS, IS HEREBY CERTIFIED TO BE THE OFFICIAL PLAT OF THE PORTION OF SAID COUNTY HIGHWAY NO. 78 WITHIN SAID SECTIONS PURSUANT TO MINNESOTA STATUTE 160.085.

CERTIFIED BY: Paul K. Ruud REGISTRATION NO. 6549
 PAUL K. RUUD
 COUNTY HIGHWAY ENGINEER

DATE: August 5, 1980

I HEREBY CERTIFY THAT THIS IS A TRUE AND CORRECT REPRESENTATION OF A SURVEY OF THE BOUNDARIES AS SHOWN, AND THAT SAID SURVEY WAS MADE UNDER MY DIRECT SUPERVISION, THAT ALL DISTANCES ARE CORRECTLY SHOWN IN FEET AND HUNDRETHS OF A FOOT, THAT THE MONUMENTS FOR THE GUIDANCE OF FUTURE SURVEYS WILL BE CORRECTLY PLACED IN THE GROUND AS SHOWN AFTER THE COMPLETION OF CONSTRUCTION, AND THAT THERE ARE NO WET LANDS OR PUBLIC HIGHWAYS TO BE DESIGNATED ON SAID PLAT OTHER THAN AS SHOWN THEREON.

Roland W. Anderson REGISTRATION NO. 5715
 ROLAND W. ANDERSON
 ANOKA COUNTY SURVEYOR

DATE: Aug. 5, 1980

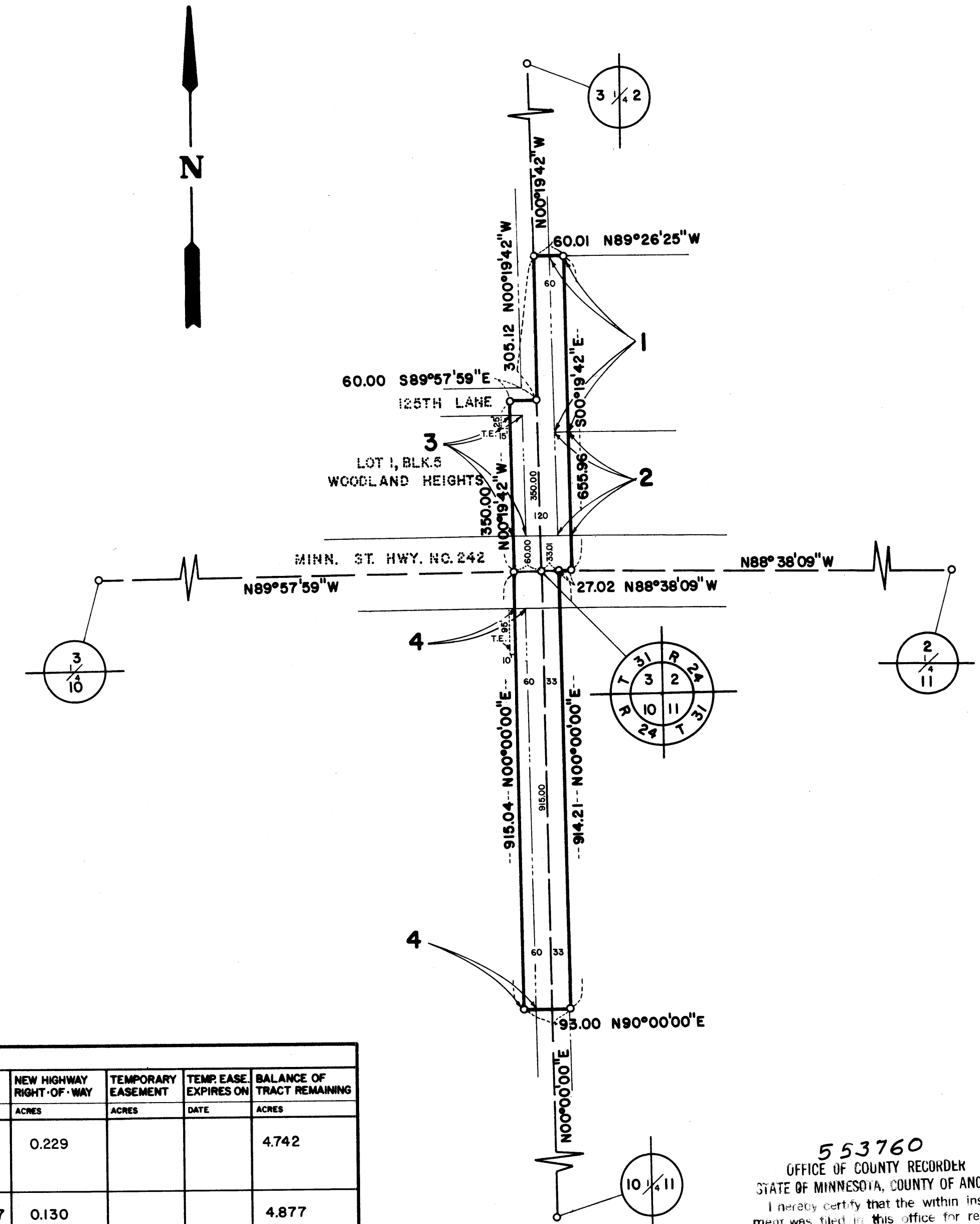
PROCEDURAL STATEMENTS

1. The methods and equipment used in the control surveys for this plat and the checks made on monument location were accomplished with electronic distance measuring devices.
2. Certificates of location are on file in the Office of the County Surveyor for the section corner monuments shown on this plat.
3. For the details of the control survey and land survey, contact the County Surveyor's Office for survey of R/W Plat No. 15, County Project No. 80-09-78
4. Bearings shown are assumed.

CONVENTIONAL SYMBOLS

- Section Line
- Quarter Line
- Quarter-quarter line
- Property Line
- R/W Boundary Line
- Old Road R/W Line
- R/W Parcel Number 7
- Right-of-Way Monument o
- Temporary Easement

RIGHT-OF-WAY IN SECTIONS 2,3,10 AND 11 TOWNSHIP 31 RANGE 24									
PARCEL	OWNER	LOCATION	DEED RECORD DOCUMENT NUMBER OR BOOK, PAGE	TORRENS CERTIFICATE NO.	ENTIRE TRACT ACRES	NEW HIGHWAY RIGHT-OF-WAY ACRES	TEMPORARY EASEMENT ACRES	TEMP. EASE. EXPIRES ON DATE	BALANCE OF TRACT REMAINING ACRES
1	MADUS R. and LADONNA L. OLSON	SW 1/4, SW 1/4 SECTION 2	1121,359		4.971	0.229			4.742
2	GERALD A. JR. and LEANN M. FEAR	SW 1/4, SW 1/4 SECTION 2	434779		5.007	0.130			4.877
3	BUILDERS CONSIGNMENT CORP.	LOT 1, BLOCK 5 WOODLAND HEIGHTS	497876		1.468	0.153	.0086	12/31/82	1.315
4	GEORGE R. JENSEN and JAMES J. GREEN	NE 1/4, NE 1/4 SECTION 10	545286		40	0.521	.0218	12/31/82	39.479



553760
 OFFICE OF COUNTY RECORDS
 STATE OF MINNESOTA, COUNTY OF ANOKA
 I hereby certify that the within instrument was filed in this office for record on the AUG 11, 1980 A.D. 19
 at 11:50 o'clock AM, and was duly recorded in book 207 of Highway Right-of-Way Plats page 14
Debbie Amundson
 County Recorder
 By 9/2 Hollenback
 Deputy