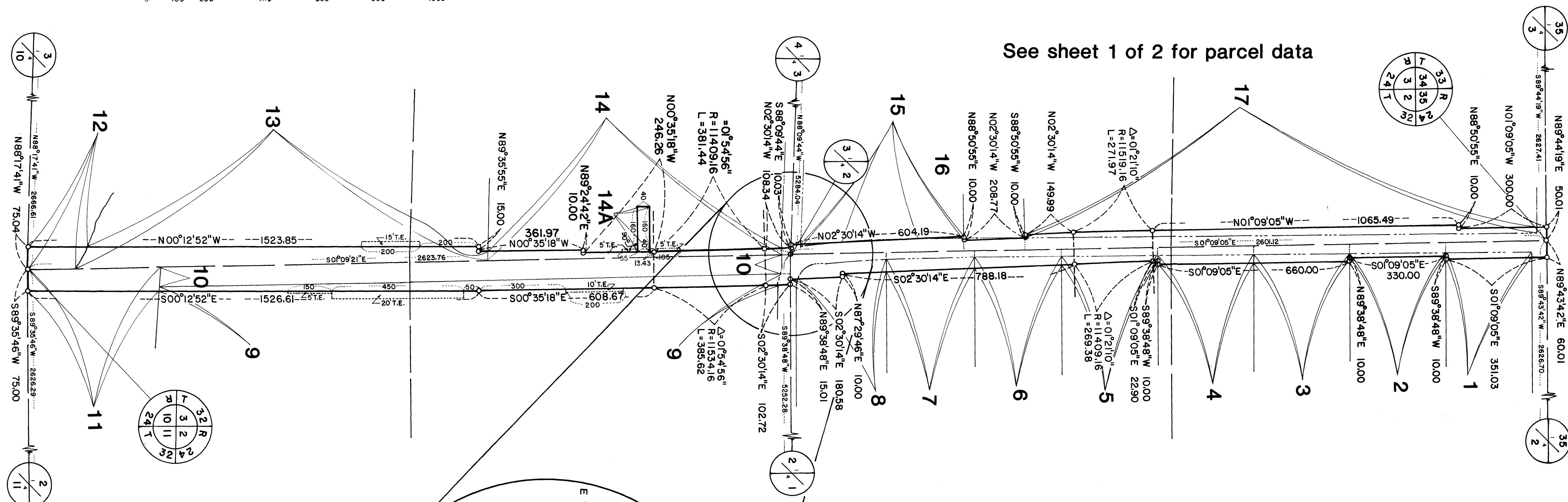
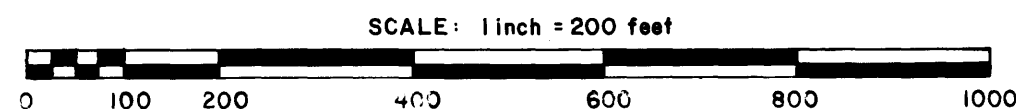
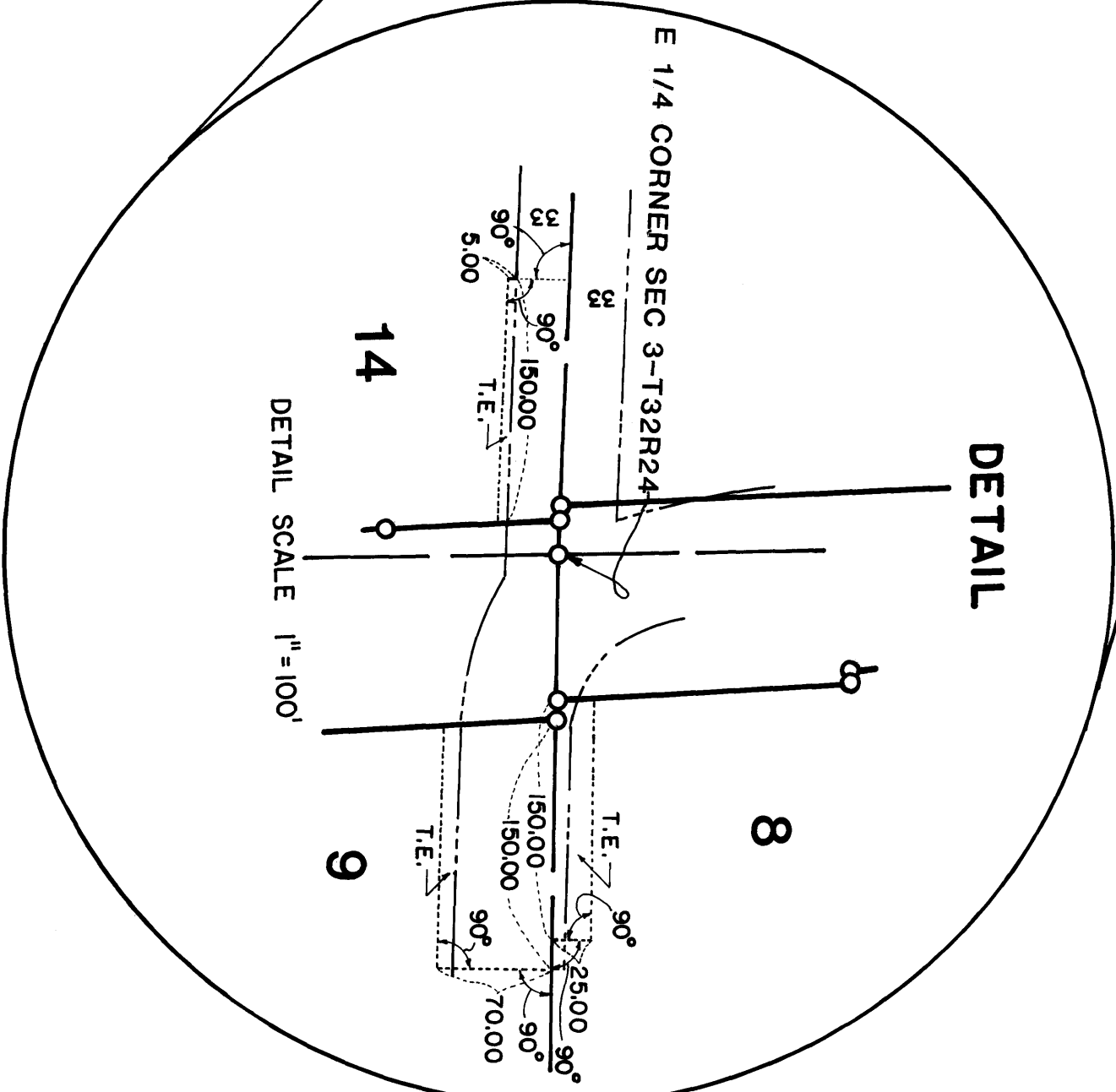


ANOKA COUNTY HIGHWAY RIGHT-OF-WAY PLAT NO. 23

County Highway Project No.C.P.-02-678-05

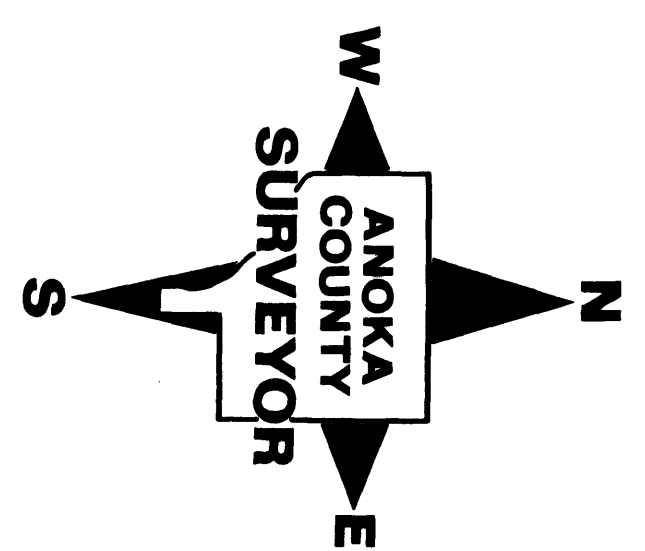


See sheet 1 of 2 for parcel data



CONVENTIONAL SYMBOLS

- Section Line
- Quarter Line
- Quarter Quarter Line
- Property Line
- R/W Boundary Line
- Old Road R/W Line
- R/W Parcel Number
- Temporary Easement
- Right-of-Way Monument



711932

OFFICE OF COUNTY RECORDER
STATE OF MINNESOTA, COUNTY OF ANOKA
I hereby certify that the within instrument was filed in this office for record on the JUN 3 1986 A.D., 1986 o'clock A.M., and was duly recorded in book 2 of page 14
Paul O. Omdahl
County Recorder
By Shirley Kay Ege
Deputy

OFFICE OF ANOKA COUNTY SURVEYOR