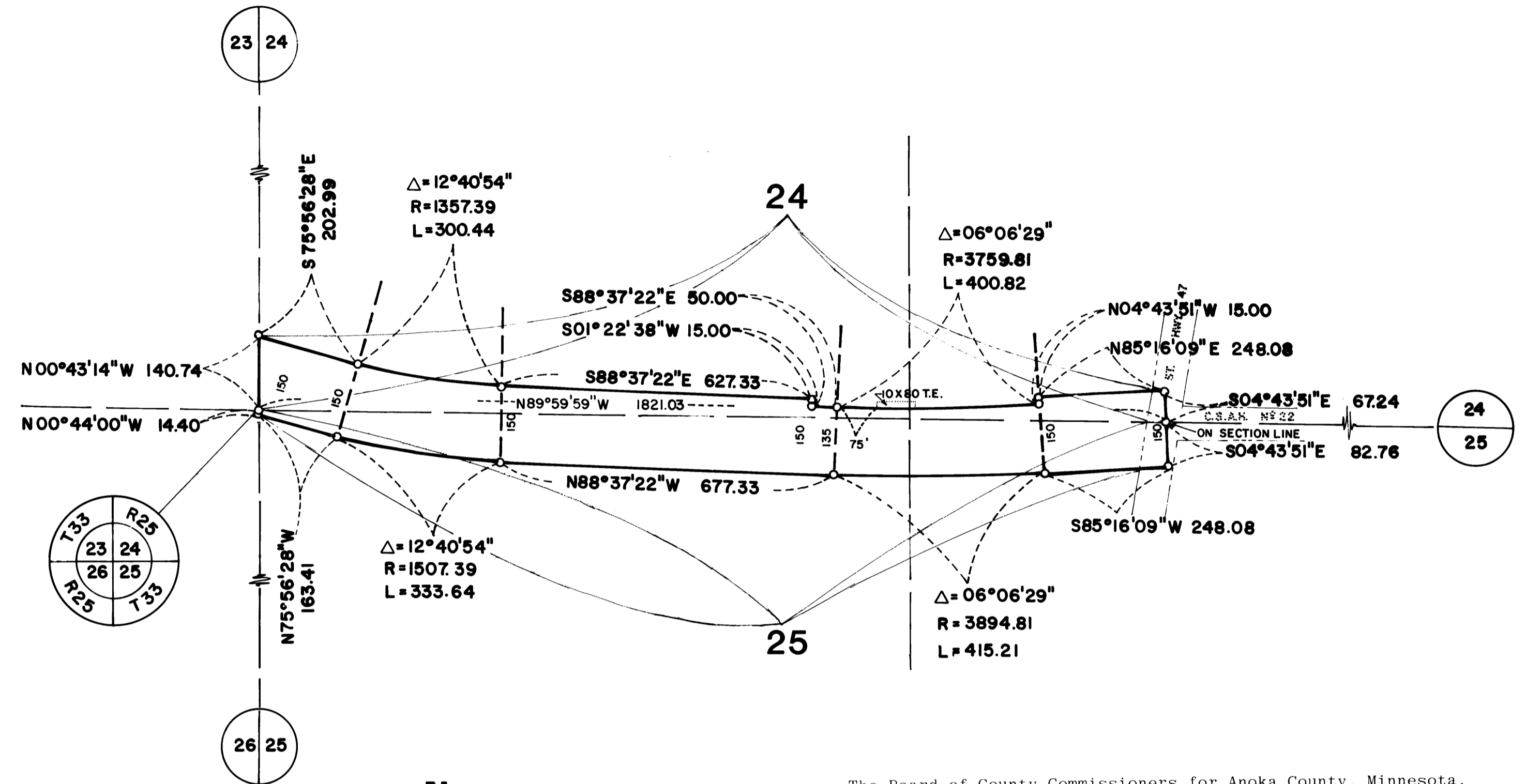
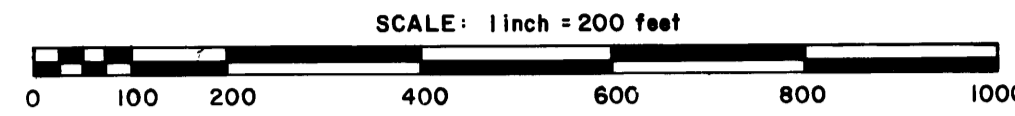
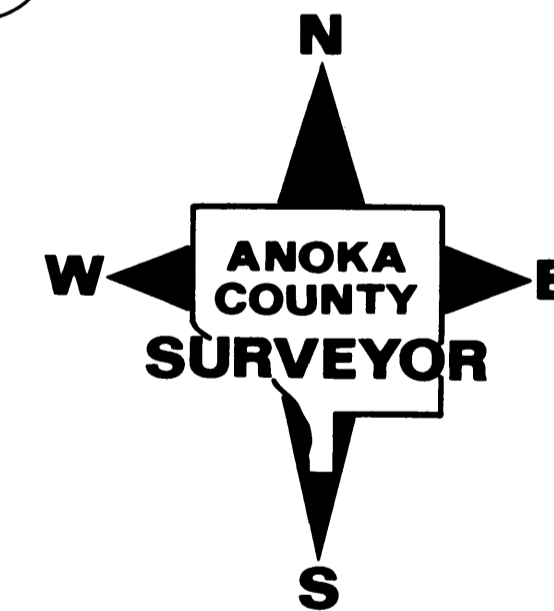


REVISION OF SHEET 4 ANOKA COUNTY HIGHWAY RIGHT-OF-WAY PLAT NO. 26

County Highway Project No. SAP-02-622-20



RIGHT-OF-WAY IN SECTIONs 24 and 25, T33, R25									
PARCEL	OWNER	LOCATION BY PARCEL IDENTIFICATION NUMBER (P.I.N.)	DEED RECORD DOCUMENT NUMBER OR BOOK, PAGE	TORRENS CERTIFICATE NO.	ENTIRE TRACT ACRES	NEW HIGHWAY RIGHT-OF-WAY ACRES	TEMPORARY EASEMENT ACRES	TEMP EASE EXPIRES ON DATE	BALANCE OF TRACT REMAINING ACRES
24	Randall D. and Carla E. Keillor	243325330003	451657		13.770	2.117	0.018	12/31/88	11.117
25	August T. and Gladys L. Farb	253325220001	154390		40.000	3.955			36.045



The Board of County Commissioners for Anoka County, Minnesota, pursuant to Board Resolution Number 86-35, dated April 8, 1986, is hereby designating the definite location of the right-of-way of County State Aid Highway Number 22 lying between its junction with Trunk Highway Number 47 and westerly to its junction with County State Aid Highway Number 5, all within the Township of Burns.

That portion of said County State Aid Highway Number 22 located in Sections 21, 22, 23, 24, 25, 26, 27, and 28, Township 33, Range 25, Anoka County, Minnesota, as shown on this plat effected by the County of Anoka, Department of Highways is hereby certified to be the official plat of that portion of said County State Aid Highway within Sections pursuant to Minnesota Statutes 160.085.

Certified by Paul K. Ruud
Paul K. Ruud, County Highway Engineer
Registration No. 6549

Date June 23, 1986

714336

PROCEDURAL STATEMENTS

- The methods and equipment used in the control surveys for this plat and the checks made on monument location were accomplished with electronic distance measuring devices.
- Parcel areas and entire tract areas shown hereon are computed from legal descriptions and not from actual surveys.
- Certificates of location are on file in the Office of the County Surveyor for the section corner monuments shown on this plat.
- For the details of the control survey and land survey, contact the County Surveyor's Office for survey of R/W Plat No. 26, County Project No. SAP-02-622-20
- Bearings shown are based on Anoka County Coordinate Project System.

OFFICE OF COUNTY RECORDER
STATE OF MINNESOTA, COUNTY OF ANOKA
I hereby certify that the within instrument was filed in this office for record on the JUN 23 1986 A.D., 1986 at 4 o'clock P.M., and was duly recorded in book 208 of Highway Right-of-Way Plats.
Paul J. Omdahl
County Recorder
By Debra Kay Ege
Deputy

CONVENTIONAL SYMBOLS

- Section Line _____
- Quarter Line _____
- Quarter Quarter Line _____
- Property Line _____
- R/W Boundary Line _____
- Old Road R/W Line _____
- R/W Parcel Number 77
- Temporary Easement _____
- Right-of-Way Monument

I hereby certify that this is a true and correct representation of a survey of the boundaries as shown, and that said survey was made under my direct supervision, that all distances are correctly shown in feet and hundredths of a foot, that the monuments for the guidance of future surveys will be correctly placed in the ground as shown after the completion of construction, and that there are no wetlands or public highways to be designated on said plat other than as shown thereon.

Roland W. Anderson Registration No. 5715
Roland W. Anderson
Anoka County Surveyor

Date June 23, 1986