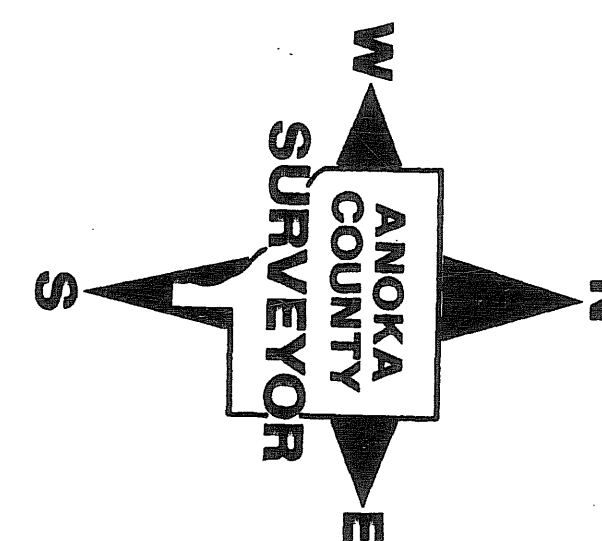
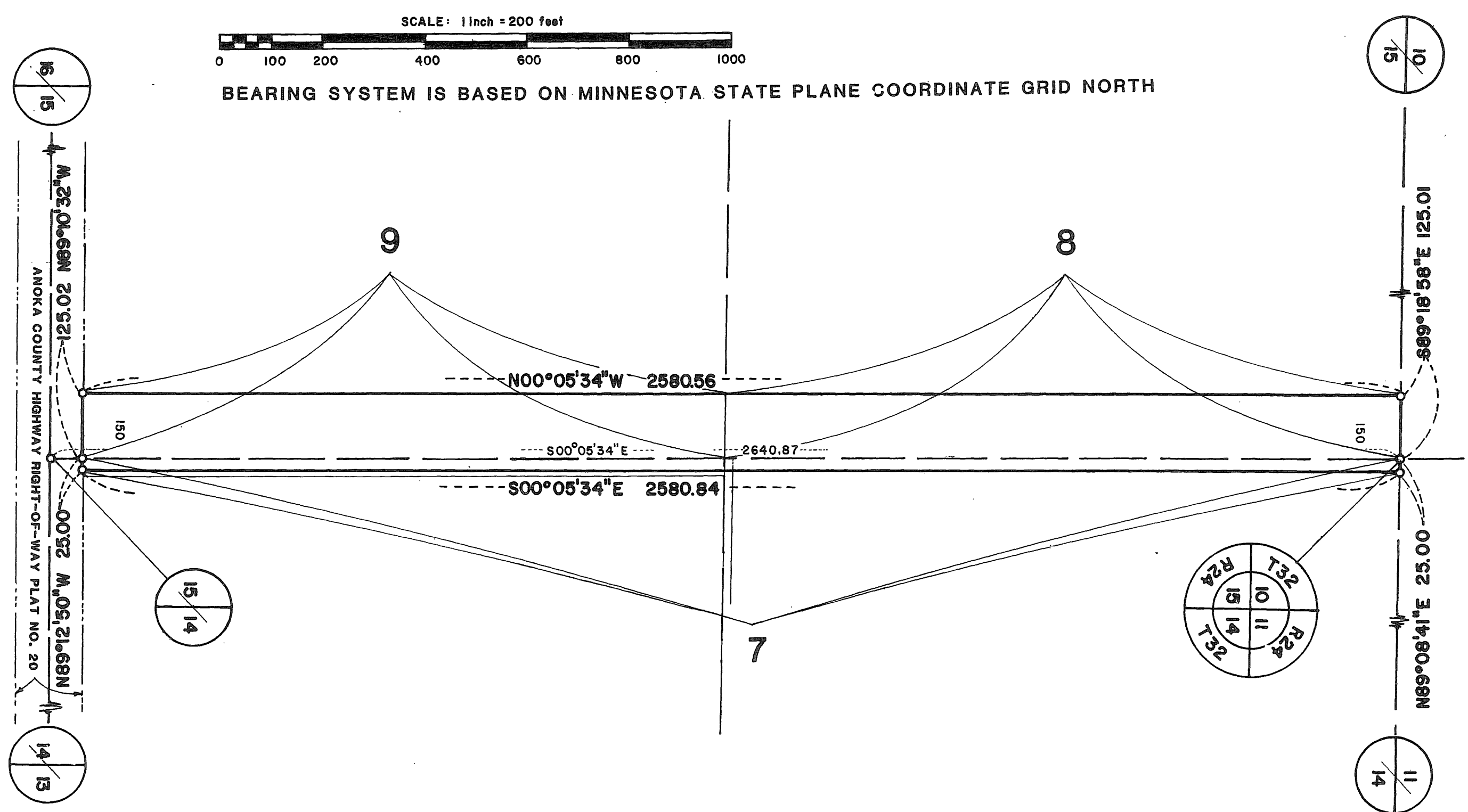


ANOKA COUNTY HIGHWAY RIGHT-OF-WAY PLAT NO.27

County Highway Project No.CP-02-678-05



CONVENTIONAL SYMBOLS

- Section Line
- Quarter Line
- Quarter Quarter Line
- Property Line
- R/W Boundary Line
- Old Road R/W Line
- R/W Parcel Number **77**
- Temporary Easement
- Right-of-Way Monument

The Board of County Commissioners for Anoka County, Minnesota, pursuant to Board Resolution Number 86-46, dated May 13, 1986 is hereby designating the definite location of the Right-of-way of County Road Number 78 from its junction with County State Aid Highway Number 20 to 1 1/2 miles North to a point common to the corners of Sections 2, 3, 10 and 11 all in Township 32, Range 24, Anoka County, Minnesota, in the City of Andover.

That portion of said County Road Number 78 located in Sections 10, 11, 14 and 15, Township 32, Range 24, Anoka County, Minnesota, as shown on this plat effected by the County of Anoka, Department of Highways is hereby certified to be the official plat of that portion of said County Road within said Sections pursuant to Minnesota Statutes 160.085.

Certified by Paul K. Ruud
Paul K. Ruud, County Highway Engineer
Registration No. 6549

Dated 6/4, 1986

PARCEL	OWNER	LOCATION BY PARCEL IDENTIFICATION NUMBER (P.I.N.)	DEED RECORD DOCUMENT NUMBER BOOK & PAGE	TORRENS CERTIFICATE NO.	ENTIRE TRACT ACRES	NEW HIGHWAY RIGHT-OF-WAY ACRES	TEMPORARY EASEMENT ACRES	TEMP EASE EXPIRES ON DATE	BALANCE OF TRACT REMAINING ACRES
7	Orville G. and Dorothy E. Aasness	143224220001	176445		35.414	1.481			33.933
8	Orville G. and Dorothy E. Aasness	153224110001	176445		39.643	3.789			35.856
9	Edward J. and Mabel L. Bayers	153224140001	360025		37.914	3.617			34.297

PROCEDURAL STATEMENTS

- The methods and equipment used in the control surveys for this plat and the checks made on monument location were accomplished with electronic distance measuring devices.
- Parcel areas and entire tract areas shown hereon are computed from legal descriptions and not from actual surveys.
- Certificates of location are on file in the Office of the County Surveyor for the section corner monuments shown on this plat.
- For the details of the control survey and land survey, contact the County Surveyor's Office for survey of R/W Plat No. 27, County Project No. CP-02-678-05
- Bearings shown are based on Anoka County Coordinate Project System.

712228

OFFICE OF COUNTY RECORDER
STATE OF MINNESOTA, COUNTY OF ANOKA
I hereby certify that the within instrument was filed in this office for record on the 04 day of JUN, A.D. 19 86
at 2:42 o'clock P.M., and was duly recorded in book 2 of page 15
Highway Right-of-Way Plats
by Jack J. Wondol
County Recorder
By Justin Kay Ege
Deputy

I hereby certify that this is a true and correct representation of a survey of the boundaries as shown, and that said survey was made under my direct supervision, that all distances are correctly shown in feet and hundredths of a foot, that the monuments for the guidance of future surveys will be correctly placed in the ground as shown after the completion of construction, and that there are no wetlands or public highways to be designated on said plat other than as shown thereon.

Roland W. Anderson Registration No. 5715
Roland W. Anderson
Anoka County Surveyor
Dated June 4, 1986

151555
OFFICE OF REGISTRAR OF TITLES
STATE OF MINNESOTA
COUNTY OF ANOKA
I hereby certify that the within instrument was filed in this office on the 04 day of JUN, A.D. 19 86, at 2:42 o'clock P.M.
by Jack J. Wondol, Recorder of Titles
By Katherine Davis
DEPUTY REGISTRAR OF TITLES

Sheet 1 of 2 Sheets

Record ID 2371445

2019622.002

ABSTRACT/TORRENS DOCUMENT

ABSTRACT/TORRENS DOCUMENT

LAND SURVEYOR'S CERTIFICATE OF CORRECTION TO PLAT

Name of Plat: ANOKA COUNTY HIGHWAY RIGHT-OF-WAY PLAT NO. 27

Pursuant to the provisions of Chapter 160.085, Laws of Minnesota, 1969, I, Larry D. Hoiom, the undersigned, a Licensed Land Surveyor in and for the State of Minnesota, declares as follows:

That Roland W. Anderson prepared the plat of ANOKA COUNTY HIGHWAY RIGHT-OF-WAY PLAT NO. 27 dated June 4, 1986, and filed on June 4, 1986 in the office of the County Recorder, Anoka County, Minnesota, in Book 2 of County Highway Right-of-Way Plats, Page 15, as Abstract Document Number 712228, and filed on June 4, 1986 in the office of the Registrar of Titles, Anoka County, Minnesota, as Torrens Document Number 151555, said Roland W. Anderson is now deceased.

That said plat contains an error, omission or defect in the following particular, to-wit:

The bearing on the north line of Parcel 7 on Sheet 1 is erroneously shown as North 89 degrees 08 minutes 41 seconds East.

That said plat is hereby corrected in the following particular, to-wit:

The above described bearing on the north line of Parcel 7 on Sheet 1 shall be changed to North 89 degrees 08 minutes 41 seconds West.

Dated this 13TH day of DECEMBER, 2010.

COUNTY SURVEYOR, ANOKA COUNTY, MINNESOTA

Larry D. Hoiom
Larry D. Hoiom, Land Surveyor
Minnesota License No. 18165

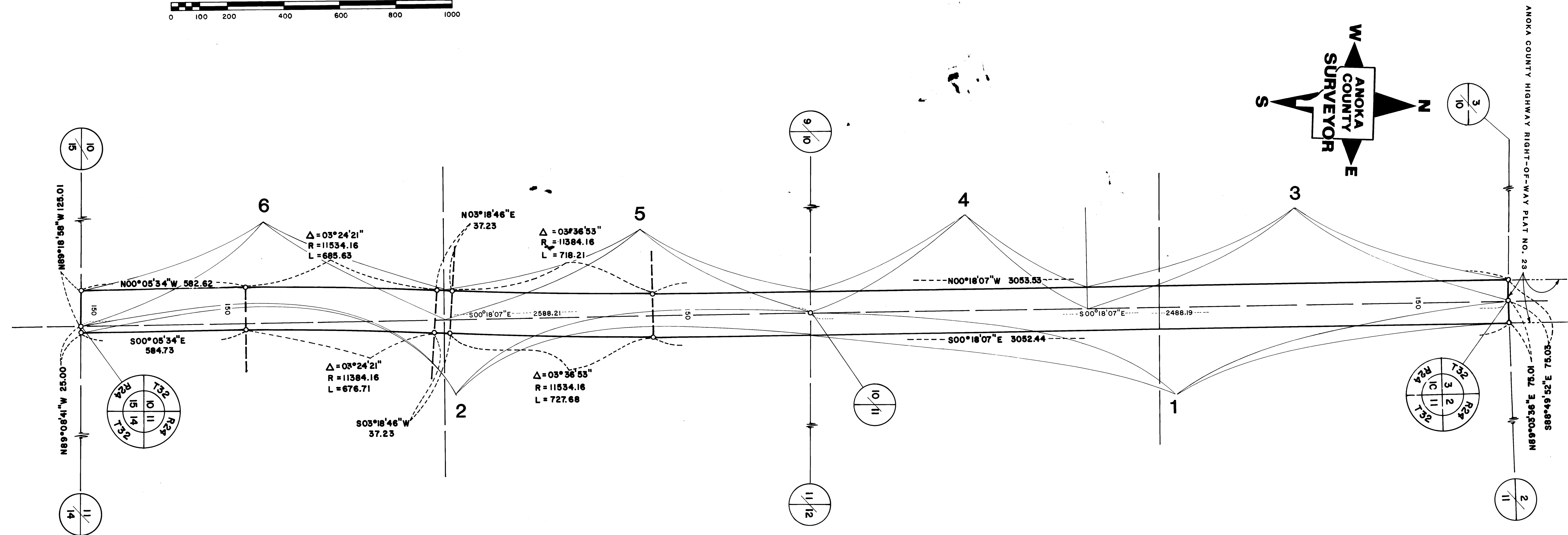
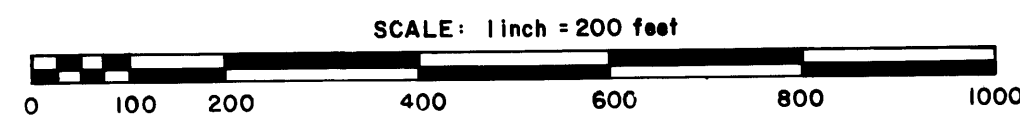
Drafted by: Anoka County Surveyor's Office
Anoka County Government Center
2100 3RD Avenue N., Room 224
Anoka, MN. 55303-2264

503532.002

Record ID 2371432

ANOKA COUNTY HIGHWAY RIGHT-OF-WAY PLAT NO. 27

County Highway Project No. CP-02-678-05



RIGHT-OF-WAY IN SECTIONs 10 and 11, T32, R24

PARCEL	OWNER	LOCATION: BY PARCEL IDENTIFICATION NUMBER (P.I.N.)	DEED RECORD DOCUMENT NUMBER OR BOOK, PAGE	TORRENS CERTIFICATE NO.	ENTIRE TRACT ACRES	NEW HIGHWAY RIGHT-OF-WAY ACRES	TEMPORARY EASEMENT ACRES	TEMP EASE EXPIRES ON DATE	BALANCE OF TRACT REMAINING ACRES
1	James and Vera Kuiken	113224220001 113224230001		33033	75.527	4.286			71.241
2	Dick F. and Elaine M. Kuiken	113224320001 113224330001	584874		78.111	3.031			75.080
3	Charles C. and Ardis L. Hoffman	103224110001	605247		91.989	2.584			89.405
4	Charles C. and Ardis L. Hoffman	103224130002	614787		60.000	1.701			58.299
5	Vergal J. and Dorthy A. Buescher	103224410001	323768		73.125	5.883			67.242
6	Donald M. and Norma J. Osman	103224410002 103224440001	478988		43.965	3.524			40.441