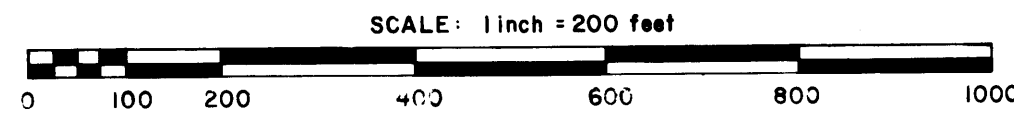


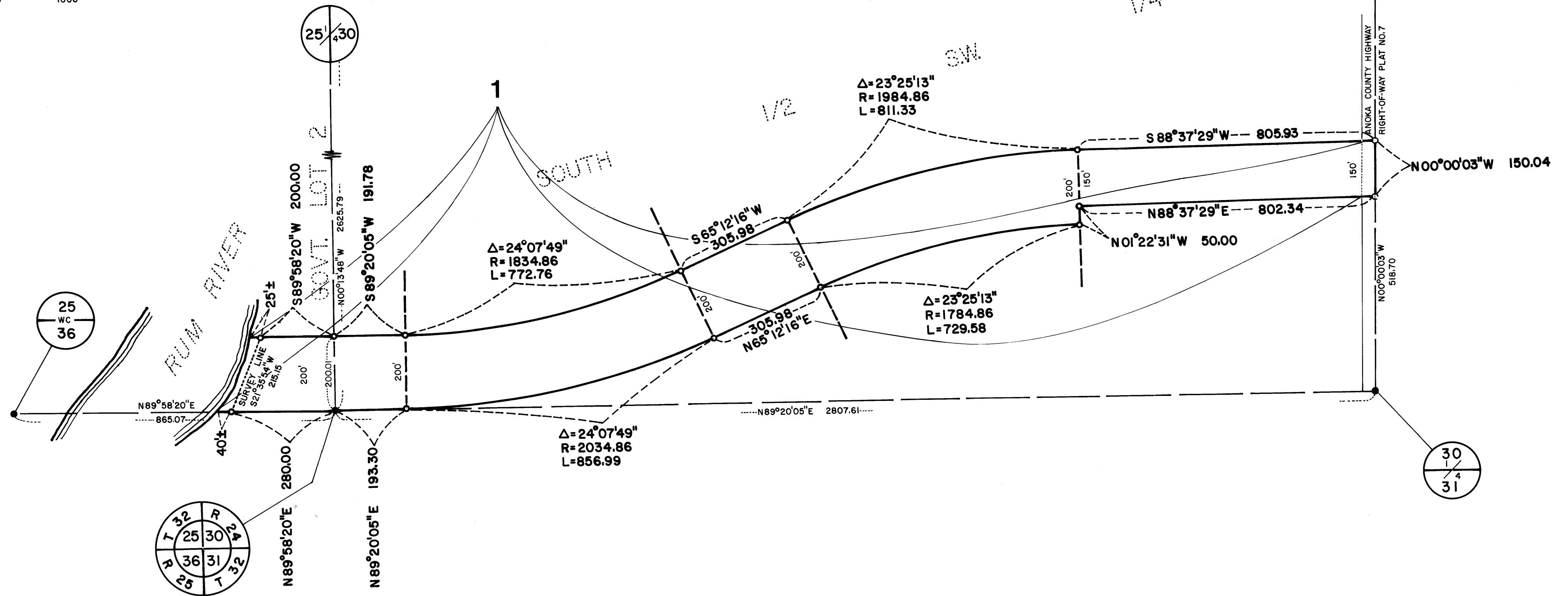
# ANOKA COUNTY HIGHWAY RIGHT-OF-WAY PLAT NO. 31

County Highway Project No. C.P.-85-05-116

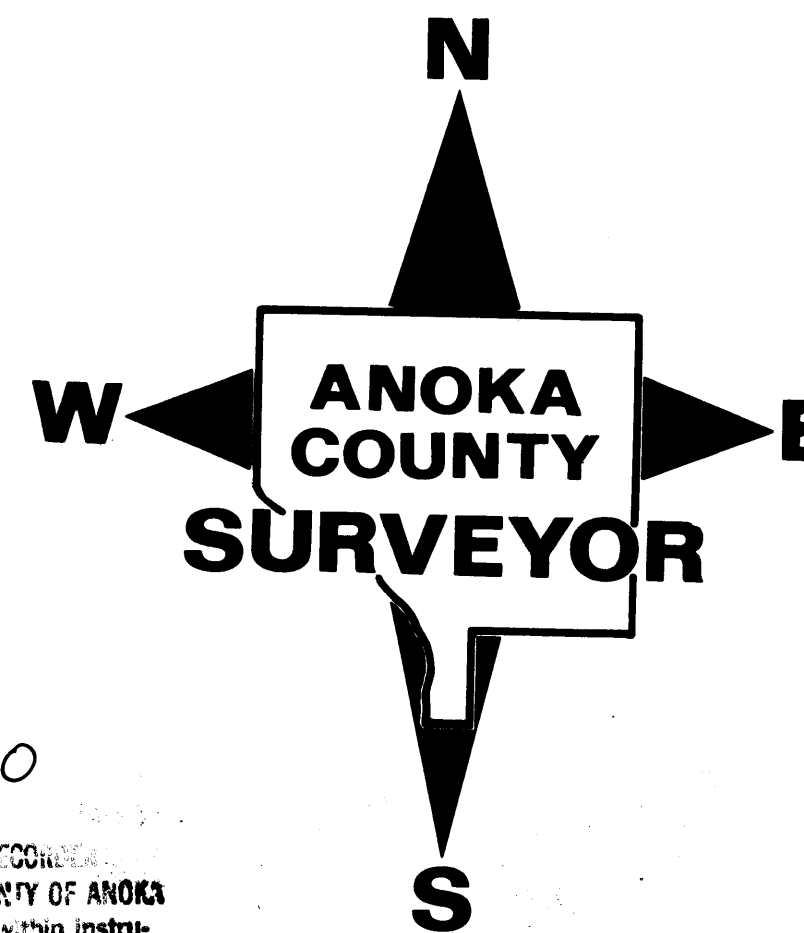


**CONVENTIONAL SYMBOLS**

- Section Line
- Quarter Line
- Quarter Quarter Line
- Property Line
- R/W Boundary Line
- Old Road R/W Line
- R/W Parcel Number **77**
- Temporary Easement
- Right-of-Way Monument



RIGHT-OF-WAY IN SECTIONs 25, T32, R25 and 30, T32, R24									
PARCEL	OWNER	LOCATION BY PARCEL IDENTIFICATION NUMBER (P.I.N.)	DEED RECORD DOCUMENT NUMBER OR BOOK, PAGE	TORRENS CERTIFICATE NO.	ENTIRE TRACT ACRES	NEW HIGHWAY RIGHT-OF-WAY ACRES	TEMPORARY EASEMENT ACRES	TEMP. EASE. EXPIRES ON DATE	BALANCE OF TRACT REMAINING ACRES
1	City of Anoka	303224340001 303224330001 253225140001	354010			13.438			



The Board of County Commissioners for Anoka County, Minnesota, pursuant to Board Resolution Number 86-109, dated December 9, 1986 is hereby designating the definite location of the right-of-way to County Road Number 116 from County State Aid Highway Number 7 Westerly to County Road Number 57 within the Cities of Anoka and Ramsey.

That portion of said County Road Number 116 located in Section 30, Township 32, Range 24 and Section 25, Township 32, Range 25, Anoka County, Minnesota as shown on this plat effected by the County of Anoka, Department of Highways is hereby certified to be the official plat of that portion of said County Road within said Sections pursuant to Minnesota Statutes 160.085.

Certified by Paul K. Ruud  
Paul K. Ruud, County Highway Engineer  
Registration No. 6549

Dated 3-16, 1987

PROCEDURAL STATEMENTS

- The methods and equipment used in the control surveys for this plat and the checks made on monument location were accomplished with electronic distance measuring devices.
- Parcel areas and entire tract areas shown hereon are computed from legal descriptions and not from actual surveys.
- Certificates of location are on file in the Office of the County Surveyor for the section corner monuments shown on this plat.
- For the details of the control survey and land survey, contact the County Surveyor's Office for survey of R/W Plat No. 31, County Project No. C.P.-85-05-116
- Bearings shown are based on Anoka County Coordinate Project System.

750640  
OFFICE OF COUNTY RECORDS  
STATE OF MINNESOTA, COUNTY OF ANOKA  
I hereby certify that the within instrument was filed in this office for record on the MAR 18, 1987 A.D., 1987  
3 of 3 pages. Paul K. Ruud duly recorded in book 201 page 19  
Paul K. Ruud  
County Recorder  
By A. D. Swanson  
County Surveyor

I hereby certify that this is a true and correct representation of a survey of the boundaries as shown, and that said survey was made under my direct supervision, that all distances are correctly shown in feet and hundredths of a foot, that the monuments for the guidance of future surveys will be correctly placed in the ground as shown after the completion of construction, and that there are no wetlands or public highways to be designated on said plat other than as shown thereon.

Mark D. Anich Registration No. 13596  
Anoka County Surveyor deputy  
Date Mar. 12 1987