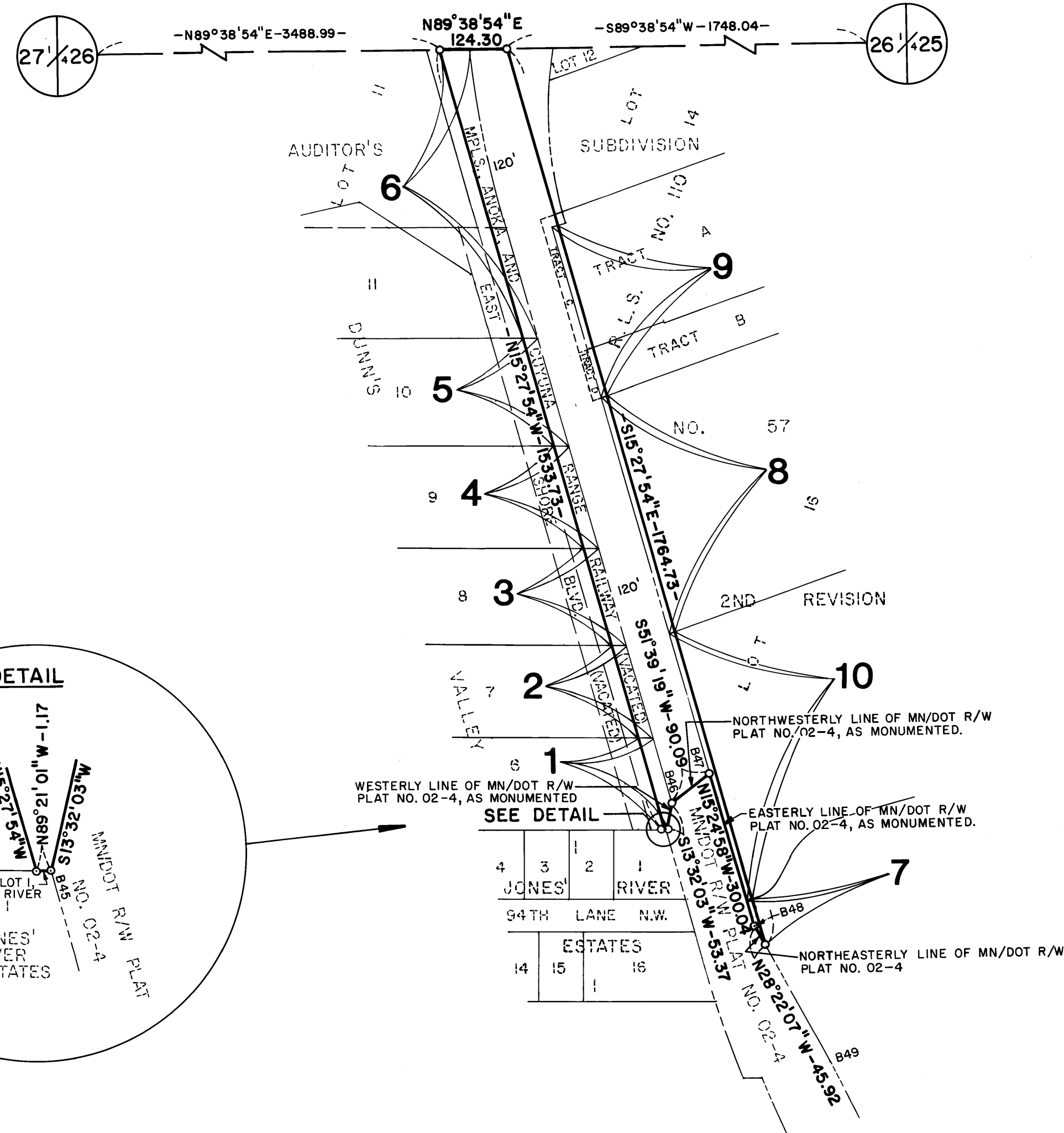
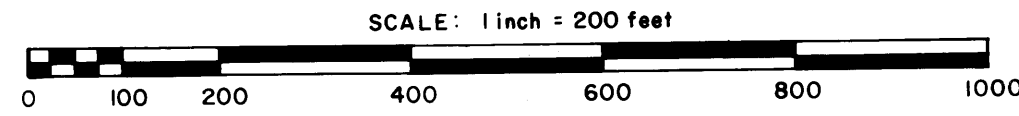
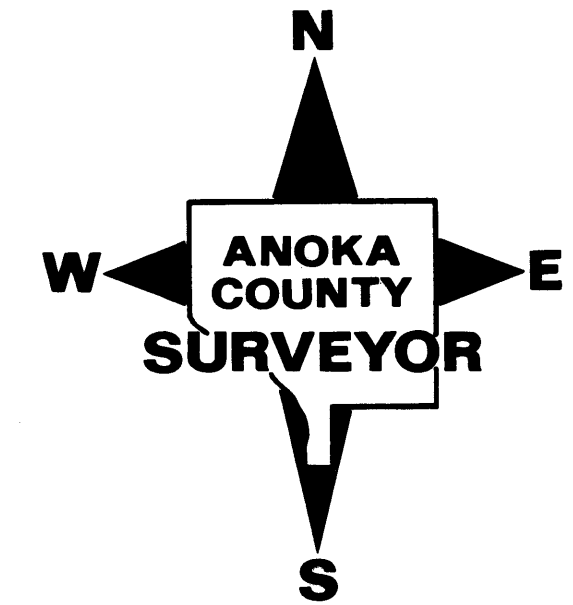


# ANOKA COUNTY HIGHWAY RIGHT-OF-WAY PLAT NO. 34

County Highway Project No. S.A.P. 02-601-32



**CONVENTIONAL SYMBOLS**

- Section Line \_\_\_\_\_
- Quarter Line \_\_\_\_\_
- Quarter Quarter Line \_\_\_\_\_
- Property Line \_\_\_\_\_
- R/W Boundary Line \_\_\_\_\_
- Old Road R/W Line \_\_\_\_\_
- R/W Parcel Number **77**
- Temporary Easement **TE 7**
- Right-of-Way Monument

**PROCEDURAL STATEMENTS**

1. The methods and equipment used in the control surveys for this plat and the checks made on monument location were accomplished with electronic distance measuring devices.
2. Parcel areas and entire tract areas shown hereon are computed from legal descriptions and not from actual surveys.
3. Certificates of location are on file in the Office of the County Surveyor for the section corner monuments shown on this plat.
4. For the details of the control survey and land survey, contact the County Surveyor's Office for Survey R/W Plat No. 34, County Project No. S.A.P. 02-601-32
5. Bearings shown are based on Anoka County Coordinate Project System.

**DATA CONTAINED WITHIN THIS BOX FOR INSTRUCTIVE AND INFORMAL PURPOSES ONLY.**

RIGHT-OF-WAY IN SECTION 26, T31, R 24									
PARCEL	OWNER	LOCATION: BY PARCEL IDENTIFICATION NUMBER (P.I.N.)	DEED RECORD DOCUMENT NUMBER OR BOOK, PAGE	TORRENS CERTIFICATE NUMBER	ENTIRE TRACT ACRES	NEW HIGHWAY RIGHT-OF-WAY ACRES	TEMPORARY EASEMENT ACRES	TEMP. EASE. EXPIRES ON DATE	BALANCE OF TRACT REMAINING ACRES
1	Kenneth E. Britzius	263124430034	111173 665260		5.331	0.095			5.236
2	Kenneth E. Britzius	263124420004	91710 665260		5.209	0.112			5.097
3	Bruce R. and Norma Jean Falink	263124420005	446579 446578		5.224	0.118			5.106
4	Anthony T. and Mary S. March	263124420006	364252		5.266	0.124			5.142
5	Harold C. and Barbara G. Haugen	263124420007	164394		5.243	0.131			5.112
6	Nelstone, Inc.	263124130010		25509	15.1	0.427			14.7
7	Bartley-Lindsay Properties	263124440027	731420		11.132	0.017			11.115
8	City of Coon Rapids	263124410006	481945		8.046	0.106			7.940
9	City of Coon Rapids	263124410001		39120	5.997	0.077			5.920
10	BTL Enterprises, Inc.	263124410007	831789		8.351	0.120			8.231

182527

Office of REGISTRAR OF TITLES  
STATE OF MINNESOTA  
COUNTY OF ANOKA

0837554

OFFICE OF COUNTY CLERK  
ANOKA

JAN 13 1989

Ted O. Omdahl  
Debra Kay Ege

The Board of County Commissioners for Anoka County, Minnesota, pursuant to Board Resolution Number 87-95, dated September 8, 1987 is hereby designating the definite location of the right-of-way of County State Aid Highway Number 1 lying between its junction with County State Aid Highway Numbers 1 and 3 and southerly to its junction with Minnesota Trunk Highway Number 610.

That portion of said County State Aid Highway Number 1 located in Section 26, Township 31, Range 24, Anoka County, Minnesota, as shown on this plat effected by the County of Anoka, Department of Highways is hereby certified to be the official plat of that portion of said County State Aid Highway within said Sections pursuant to Minnesota Statutes 160.085.

Certified by Paul K. Ruud  
Paul K. Ruud, County Highway Engineer  
Registration No. 6549

Date Jan. 13, 1989

I hereby certify that this is a true and correct representation of a survey of the boundaries as shown, and that said survey was made under my direct supervision, that all distances are correctly shown in feet and hundredths of a foot, that the monuments for the guidance of future surveys will be correctly placed in the ground as shown after the completion of construction, and that there are no wetlands or public highways to be designated on said plat other than as shown thereon.

Marilyn D. Anderson Registration No. 13596  
Marilyn D. Anderson  
Anoka County Surveyor

Date Jan 10, 1989