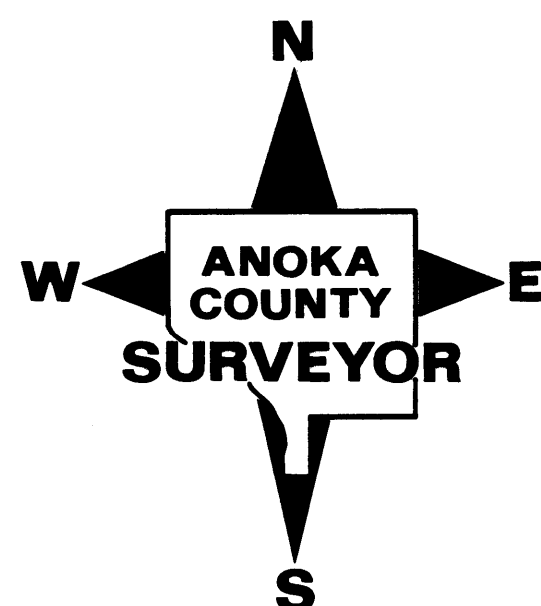
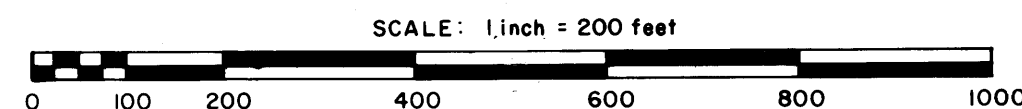


ANOKA COUNTY HIGHWAY RIGHT-OF-WAY PLAT NO. 36

County Highway Project No. C.P. 88-08-116

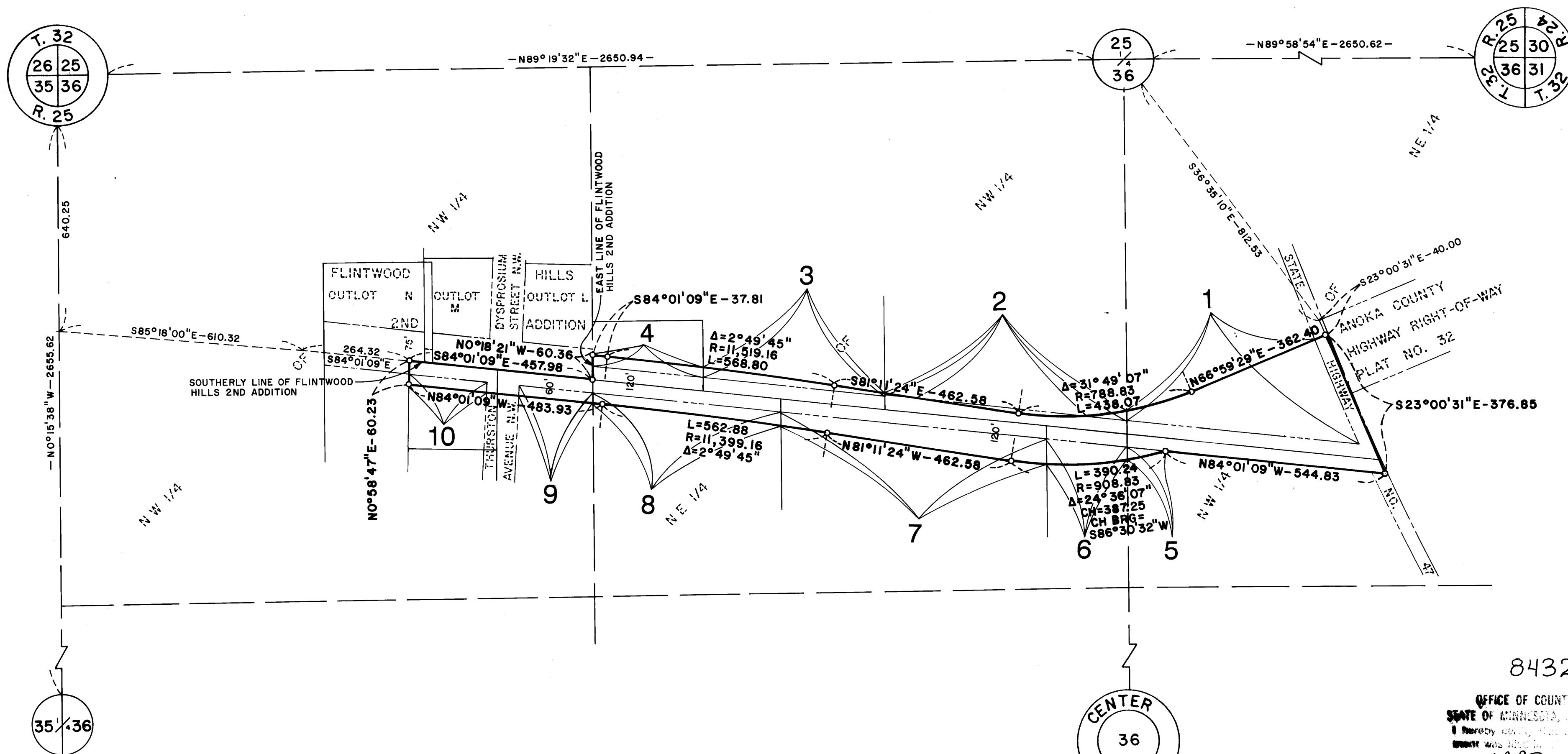


CONVENTIONAL SYMBOLS

- Section Line
- Quarter Line
- Quarter Quarter Line
- Property Line
- R/W Boundary Line
- Old Road R/W Line
- R/W Parcel Number **77**
- Temporary Easement T.E. 7
- Right-of-Way Monument

PROCEDURAL STATEMENTS

- The methods and equipment used in the control surveys for this plat and the checks made on monument location were accomplished with electronic distance measuring devices.
- Parcel areas and entire tract areas shown hereon are computed from legal descriptions and not from actual surveys.
- Certificates of location are on file in the Office of the County Surveyor for the section corner monuments shown on this plat.
- For the details of the control survey and land survey, contact the County Surveyor's Office for Survey R/W Plat No. 36, County Project No. C.P.88-08-116
- Bearings shown are based on Anoka County Coordinate Project System.



DATA CONTAINED WITHIN THIS BOX FOR INSTRUCTIVE AND INFORMAL PURPOSES ONLY.

RIGHT-OF-WAY IN SECTION 36, T. 32, R. 25									
PARCEL	OWNER	LOCATION: BY PARCEL IDENTIFICATION NUMBER (P.I.N.)	DEED RECORD DOCUMENT NUMBER OR BOOK, PAGE	TORRENS CERTIFICATE NUMBER	ENTIRE TRACT ACRES	NEW HIGHWAY RIGHT-OF-WAY ACRES	TEMPORARY EASEMENT ACRES	TEMP. EASE. EXPIRES ON DATE	BALANCE OF TRACT REMAINING ACRES
1	Polka Dot Dairy, Inc.	363225120003	574051 677058		8.081	1.692			6.389
2	Community Service Radio, Inc	363225210006	411965		11.930	0.027			11.903
3	Myrtle D. Chapman	363225210003	173521		10.363	0.176			10.187
4	Darell Wilbur Chapman and Nancy Joan Chapman	363225210004	379794		0.804	0.167			0.637
5	Nellie H. Klein	363225120001	462344		4.901	0.039			4.862
6	Lowe Fence, Inc.	363225240002	447088		6.239	0.239			6.000
7	Norman D. Holm	363225210001	487532		32.579	0.784			31.795
8	Norman D. Holm	363225210002	589722		4.644	0.321			4.323
9	Norman D. Holm	363225220007	485261		4.379	0.113			4.266
10	Delford K. Anderson and Arlene J. Anderson	363225220001	556467		0.783	0.120			0.663

The Board of County Commissioners for Anoka County, Minnesota, pursuant to Board Resolution Number 86-109, dated December 9, 1986 is hereby designating the definite location of the right-of-way of County Road Number 116 from County State Aid Highway Number 7 westerly to County Road Number 57 within the Cities of Anoka and Ramsey.

That portion of said County Road Number 116 located in Section 36, Township 32, Range 25, Anoka County, Minnesota, as shown on this plat effected by the County of Anoka, Department of Highways is hereby certified to be the official plat of that portion of said County Road within said Sections pursuant to Minnesota Statutes 160.085.

Certified by Paul K. Ruud
Paul K. Ruud, County Highway Engineer
Registration No. 6549
Date Mar. 14, 1989

I hereby certify that this is a true and correct representation of a survey of the boundaries as shown, and that said survey was made under my direct supervision, that all distances are correctly shown in feet and hundredths of a foot, that the monuments for the guidance of future surveys will be correctly placed in the ground as shown after the completion of construction, and that there are no wetlands or public highways to be designated on said plat other than as shown thereon.

Merlyn D. Anderson Registration No. 13596
Merlyn D. Anderson
Anoka County Surveyor
Date Mar. 14 1989

843275
OFFICE OF COUNTY RECORDER
STATE OF MINNESOTA, COUNTY OF ANOKA
I hereby certify that this plat was recorded in the County Recorder's Office on the MAR. 14, 1989.
Recorded in Book 3 of Right of Way Plats
Ted J. Omdahl
Steve Kay Ge