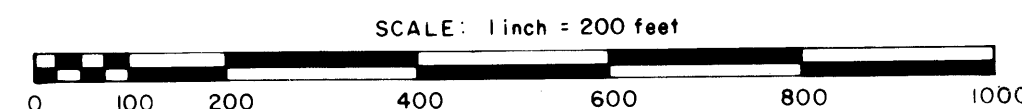
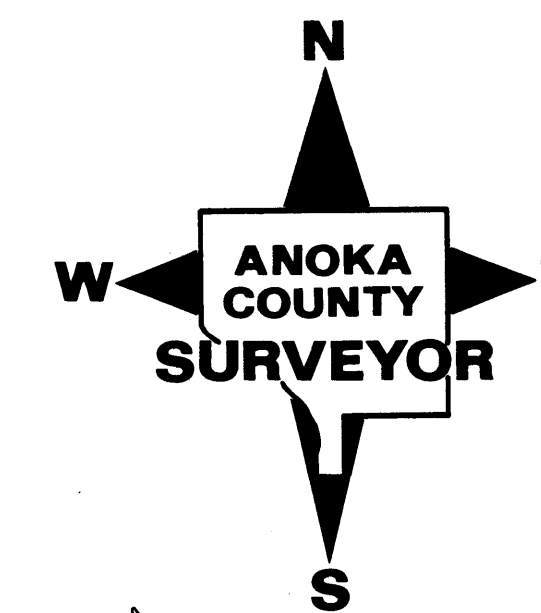


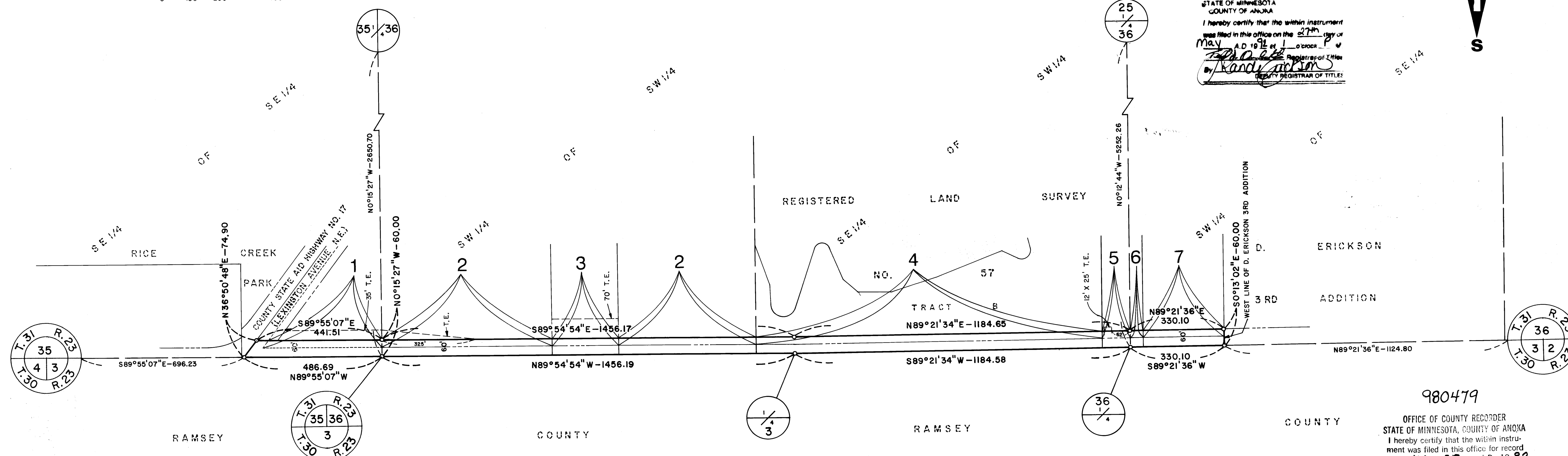
ANOKA COUNTY HIGHWAY RIGHT-OF-WAY PLAT NO. 40

County Highway Project No. S.P. 02-632-04

219675



Office of REGISTRAR OF TITLES
STATE OF MINNESOTA
COUNTY OF ANOKA
I hereby certify that the within instrument was filed in this office on the 27th day of May A.D. 1992 at 1 o'clock P.M. By *Kandy Jackson* Deputy REGISTRAR OF TITLES



CONVENTIONAL SYMBOLS

- Section Line _____
- Quarter Line _____
- Quarter Quarter Line _____
- Property Line _____
- Plat Boundary Line _____
- Existing R/W Line _____
- R/W Parcel Number **77**
- Temporary Easement T.E. 7
- Right-of-Way Monument

PROCEDURAL STATEMENTS

1. The methods and equipment used in the control surveys for this plat and the checks made on monument locations were accomplished with electronic distance measuring devices.
2. Parcel areas and entire tract areas shown hereon are computed from legal descriptions and not from actual surveys.
3. Certificates of location are on file in the Office of the County Surveyor for the section corner monuments shown on this plat.
4. For the details of the control survey and land survey, contact the County Surveyor's Office for the survey of Anoka County Highway R/W Plat No. 40, County Project No. S.P. 02-632-04
5. Bearings shown are based on Anoka County Project Coordinate System.

The Board of County Commissioners for Anoka County, Minnesota, pursuant to Board Resolution Number 89-135, dated November 21, 1989 is hereby designating the definite location of the right-of-way of County State Aid Highway Number 32 lying between its junction with County State Aid Highway Number 17 (Lexington Avenue NE) and easterly to 600 feet east of West Royal Oaks Drive.

That portion of said County State Aid Highway Number 32 located in Sections 35 and 36, Township 31, Range 23, Anoka County, Minnesota, as shown on this plat effected by the County of Anoka, Department of Highways is hereby certified to be the official plat of that portion of said County State Aid Highway within said Sections pursuant to Minnesota Statutes 160.085.

I hereby certify that this is a true and correct representation of a survey of the boundaries as shown, and that said survey was made under my direct supervision, that all distances are correctly shown in feet and hundredths of a foot, that the monuments for the guidance of future surveys will be correctly placed in the ground as shown after the completion of construction, and that there are no wetlands or public highways to be designated on said plat other than as shown thereon.

Merlyn D. Anderson
Merlyn D. Anderson
Anoka County Surveyor
Registration No. 13596

Date May 27 1992

Certified by *Paul K. Ruud*
Paul K. Ruud, County Highway Engineer
Registration No. 6549

Date May 27 1992

980479

OFFICE OF COUNTY RECORDER
STATE OF MINNESOTA, COUNTY OF ANOKA
I hereby certify that the within instrument was filed in this office for record on the May 27 A.D., 19 92 at 1 o'clock P.M., and was duly recorded in book 309 Right-of-Way 1185
By *Dee J. Omdahl*
Deputy

DATA CONTAINED WITHIN THIS BOX FOR INSTRUCTIVE AND INFORMAL PURPOSES ONLY

RIGHT-OF-WAY IN SECTION 35 and 36, T. 31, R. 23									
PARCEL	OWNER	LOCATION: BY PARCEL IDENTIFICATION NUMBER (P.I.N.)	DEED RECORD OR DOCUMENT NUMBER (BOOK, PAGE)	TORRENS CERTIFICATE NUMBER	ENTIRE TRACT ACRES	NEW HIGHWAY RIGHT-OF-WAY ACRES	TEMPORARY EASEMENT ACRES	TEMP. EASE. EXPIRES ON DATE	BALANCE OF TRACT REMAINING ACRES
1	County of Anoka	353123440008	513117		2.049	0.000 EXIST. ESMT.	0.284	12-31-93	2.049
2	County of Anoka	363123330001	441543		36.379	0.673	0.131	12-31-93	35.706
3	Dale L. Blomberg	363123330003	613499		2.825	0.146	0.378	12-31-93	2.679
4	Dennis D. and Vickie L. Bornholdt	363123340006		68614	7.673	0.756			6.917
5	Jeffrey M. and Cheryl L. Eliason	363123340001		51144	0.924	0.062	0.007	12-31-93	0.862
6	Jeffrey M. and Cheryl L. Eliason	363123430003		51144	0.414	0.028			0.386
7	Chester W. Latawiec, Jr. and Rosanne M Latawiec	363123430002		50672	3.458	0.177			3.281