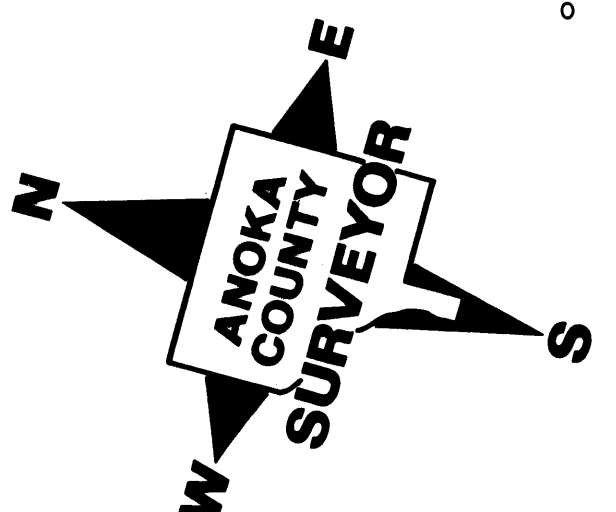
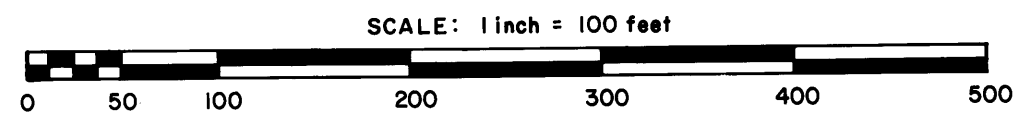


# ANOKA COUNTY HIGHWAY RIGHT-OF-WAY PLAT NO. 43

## County Highway Project No. S.P. 02-601-35

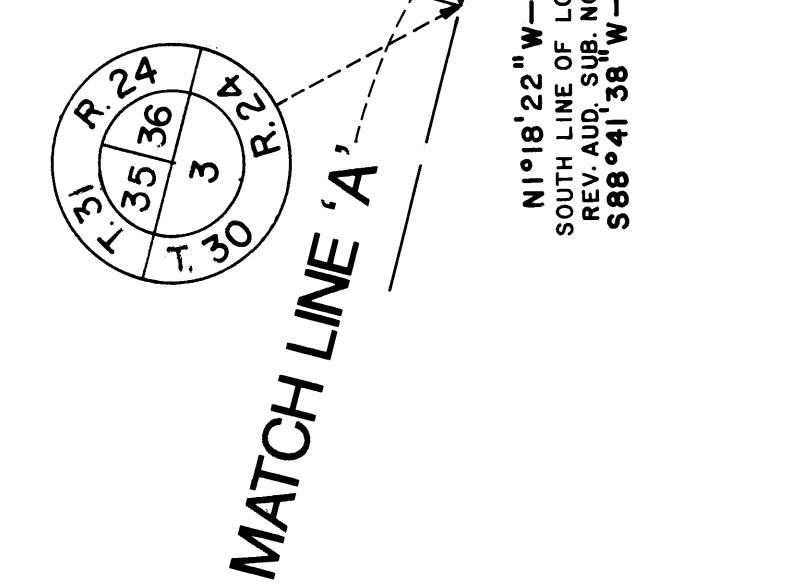
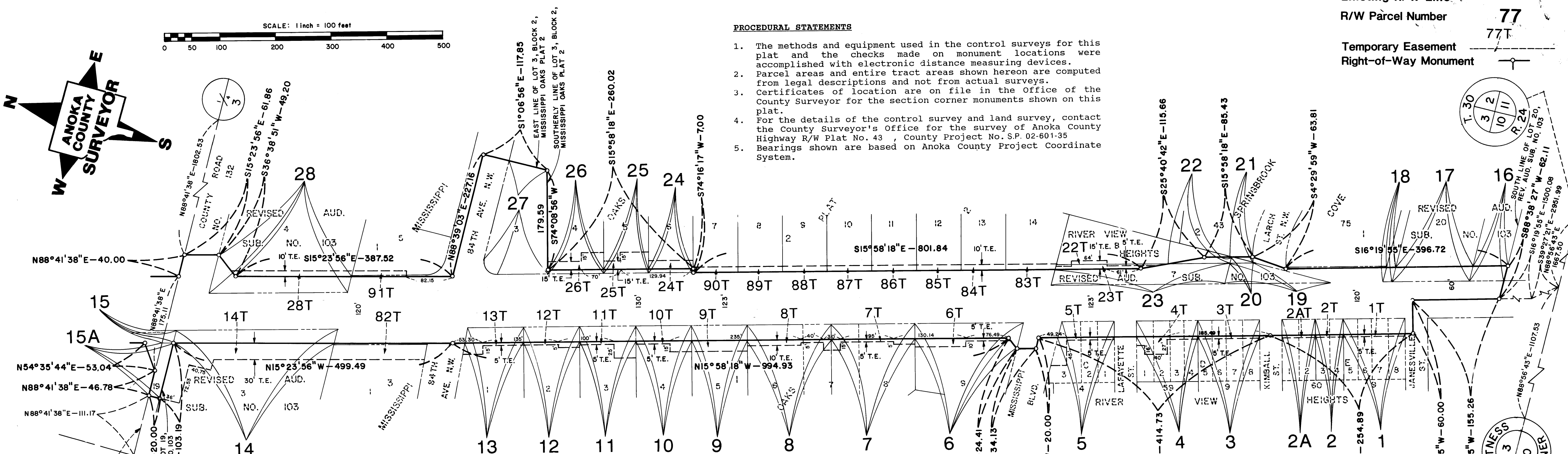
### CONVENTIONAL SYMBOLS

- Section Line
- Quarter Line
- Quarter Quarter Line
- Property Line
- Plat Boundary Line
- Existing R/W Line
- R/W Parcel Number **77**
- Temporary Easement
- Right-of-Way Monument



### PROCEDURAL STATEMENTS

- The methods and equipment used in the control surveys for this plat and the checks made on monument locations were accomplished with electronic distance measuring devices.
- Parcel areas and entire tract areas shown hereon are computed from legal descriptions and not from actual surveys.
- Certificates of location are on file in the Office of the County Surveyor for the section corner monuments shown on this plat.
- For the details of the control survey and land survey, contact the County Surveyor's Office for the survey of Anoka County Highway R/W Plat No. 43, County Project No. S.P. 02-601-35.
- Bearings shown are based on Anoka County Project Coordinate System.



### DATA CONTAINED WITHIN THIS BOX FOR INSTRUCTIVE AND INFORMAL PURPOSES ONLY

PARCEL	OWNER	LOCATION: BY PARCEL IDENTIFICATION NUMBER (P.L.N.)	DEED RECORD DOCUMENT NO. OR BOOK PAGE	TORRENS CERTIFICATE NUMBER	ENTIRE TRACT ACRES	NEW HIGHWAY RIGHT OF WAY ACRES	TEMPORARY EASEMENT ACRES	TEMP. EASE. EXPIRES ON DATE	BALANCE OF TRACT REMAINING ACRES
1, 1T	Beverly Betts	033024230001	723585 723586		0.430	0.070	0.013	12-31-96	0.360
2, 2T	Melvin H. and Diane J. Lange	033024220115		40092	0.126	0.032	0.006	12-31-96	0.094
2A, 2AT	Melvin H. and Diane J. Lange	033024220115	418144		0.304	0.039	0.007	12-31-96	0.265
3, 3T	Janice K. Jorgensen	033024220119		70664	0.354	0.072	0.013	12-31-96	0.282
4, 4T	Rodney N. and Roberta L. Stuflick	033024220083		75737	0.277	0.072	0.041	12-31-96	0.205
5, 5T	George K. and Monica G. Frederick	033024220066	141784		0.424	0.063	0.035	12-31-96	0.361
6, 6T	Cornie Lee Featherston	033024220012		69136	0.539	0.123	0.040	12-31-96	0.416
7, 7T	Elmer and Ruth Haase	033024220011		55911	0.591	0.093	0.027	12-31-96	0.498
8, 8T	Cynthia L. Doerr	033024220010		68139	0.688	0.093	0.033	12-31-96	0.595
9, 9T	Burton L. and Doris E. Ash	033024220009		57069	0.631	0.062	0.046	12-31-96	0.569
10, 10T	Daniel J. and Renee L. Jarosca	033024220008		44327	0.593	0.062	0.025	12-31-96	0.531
11, 11T	Lynn R. and Laurel A. Skifstrom	033024220007		33548	0.503	0.062	0.034	12-31-96	0.441
12, 12T	B. C. Investments	033024220006		68745	0.413	0.062	0.016	12-31-96	0.351
13, 13T	Thomas A. and Laura L. Schommer	033024220005		65776	0.396	0.064	0.024	12-31-96	0.332
14, 14T	City of Coon Rapids	033024220001		28091	4.565	0.155	0.275	12-31-96	4.410
15	James W. Buzzelli, Jr.	043024110010	366582		2.259	0.010			2.249
15A	James W. Buzzelli, Jr.	043024110010	366582		2.259	0.046			2.213
16	Dennis G. and Mary K. Conway	033024240138		71398	2.763	0.040			2.723
17	Service Centers of America, Inc.	033024240010		55653	0.407	0.085			0.322
18	Gap (as monumented)					0.010			
19	Shamrock Development, Inc.	033024220120		74518	0.099	0.099			0.000
20	Shamrock Development, Inc.	033024220122		74518	0.006	0.006			0.000
21	Michael R. and Deborah L. Bruns	033024210123		73941	0.374	0.004			0.370
22, 22T	Louis J. and Helen F. Brezinka	033024220123		74519	0.359	0.020	0.010	12-31-96	0.339
23, 23T	Louis J. and Helen F. Brezinka	033024220121		74519	0.267	0.233	0.024	12-31-96	0.034
24, 24T	Donald R. and Kathleen A. Gruetle	033024220050		61981	0.537	0.013	0.028	12-31-96	0.524
25, 25T	The Secretary of Housing and Urban Development of Washington, D.C.	033024220049		73200	0.294	0.013	0.045	12-31-96	0.281
26, 26T	Secretary of Veterans Affairs, of Washington,	033024220048		70853	0.398	0.016	0.048	12-31-96	0.382
27	June S. Larson	033024220047		67339	0.425	0.425			0.000
28, 28T	Shamrock Development, Inc.	033024220002		70792	2.726	0.189	0.049	12-31-96	2.537
82T	Darrel T. Erickson	033024220116		59416			0.111	12-31-96	
83T	Bertel and Marlys M. Dahlin	033024220058		48946			0.020	12-31-96	
84T	Richard W. Palmer	033024220057		46543			0.018	12-31-96	
85T	Todd A. and Kimberly R. Nelson	033024220056		72261			0.018	12-31-96	
86T	Lawrence P. and Nancy C. Schintgen	033024220055		41553			0.018	12-31-96	
87T	Gloria Ann M. Larson	033024220054		67179			0.018	12-31-96	
88T	Gerald A. and Claudia L. Harter	033024220053		39559			0.018	12-31-96	
89T	Warren R. and Frances L. Olson	033024220052		25366			0.018	12-31-96	
90T	Mark and Harriete J. Clark	033024220051		65071			0.018	12-31-96	
91T	Owen H. and Barbara M. Shelton	033024220044		20898			0.018	12-31-96	

1130227  
 OFFICE OF COUNTY RECORDER  
 STATE OF MINNESOTA, COUNTY OF ANOKA  
 I hereby certify that the within instrument was filed in this office for record on the 8th day of August, A.D., 1994  
 at 3:30 o'clock P.M., and was duly recorded in book 358 page 263  
Edward M. Jaska  
 County Recorder  
 By A. Arsenau  
 Deputy

I hereby certify that this is a true and correct representation of a survey of the boundaries as shown, and that said survey was made under my direct supervision, that all distances are correctly shown in feet and hundredths of a foot, that the monuments for the guidance of future surveys will be correctly placed in the ground as shown after the completion of construction, and that there are no wetlands or public highways to be designated on said plat other than as shown thereon.

Marilyn D. Anderson Registration No. 13596  
 Merilyn D. Anderson  
 Anoka County Surveyor  
 Date Aug. 8 1994

The Board of County Commissioners for Anoka County, Minnesota, pursuant to Board Resolution Number 94-89, dated June 28, 1994, is hereby designating the definite location of the right-of-way of County State Aid Highway Number 1 lying between its junction with Trunk Highway Number 610 and southerly to its junction with Janesville Street.

That portion of said County State Aid Highway Number 1 located in Sections 35 and 36, Township 31, Range 24, and Section 3, Township 30, Range 24, Anoka County, Minnesota, as shown on this plat effected by the County of Anoka, Department of Highways is hereby certified to be the official plat of that portion of said County State Aid Highway within said Sections pursuant to Minnesota Statutes 160.085.

Certified by Paul K. Ruud  
 Paul K. Ruud, County Highway Engineer  
 Registration No. 6549

Date Aug. 8 1994

# ANOKA COUNTY HIGHWAY RIGHT-OF-WAY PLAT NO. 43

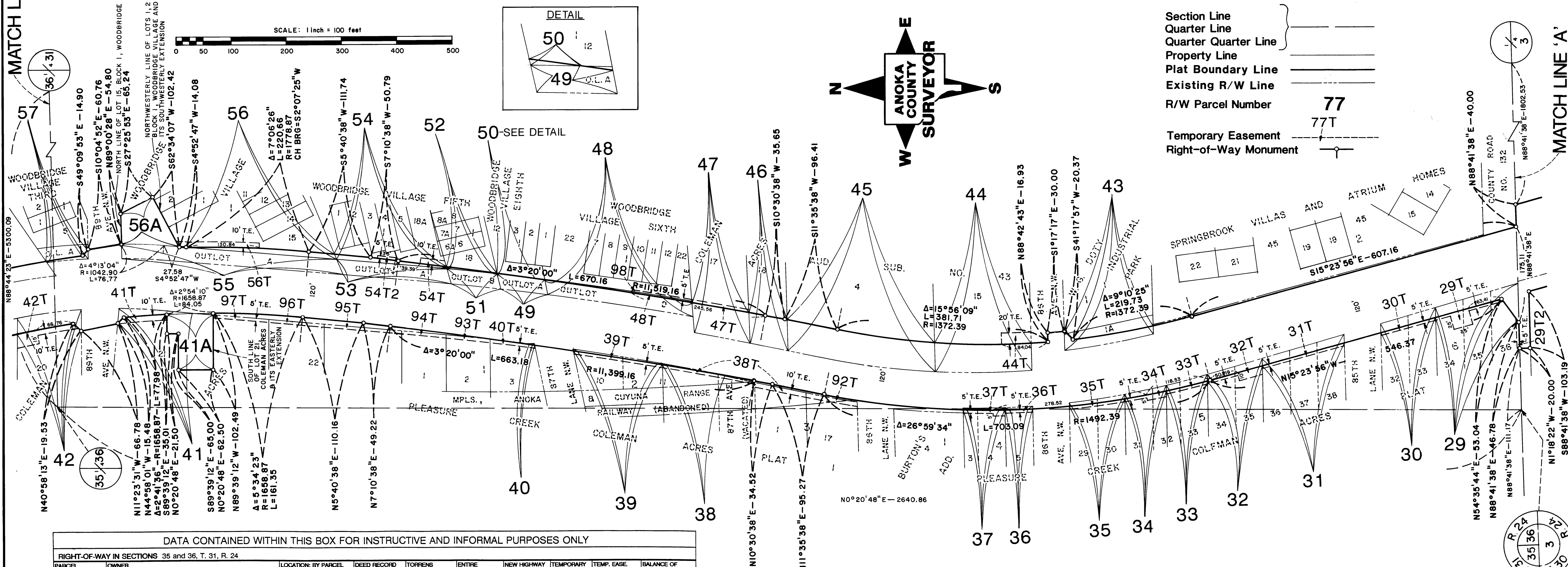
County Highway Project No. S.P. 02-601-35

CONVENTIONAL SYMBOLS

- Section Line
- Quarter Line
- Quarter Quarter Line
- Property Line
- Plat Boundary Line
- Existing R/W Line
- R/W Parcel Number **77**
- Temporary Easement
- Right-of-Way Monument

MATCH LINE 'B'

MATCH LINE 'A'



DATA CONTAINED WITHIN THIS BOX FOR INSTRUCTIVE AND INFORMAL PURPOSES ONLY

PARCEL	OWNER	LOCATION: BY PARCEL IDENTIFICATION NUMBER (P.L.N.)	DEED RECORD DOCUMENT NO. OR BOOK, PAGE	TORRENS CERTIFICATE NUMBER	ENTIRE TRACT ACRES	NEW HIGHWAY RIGHT OF WAY ACRES	TEMPORARY EASEMENT ACRES	TEMP. EASE EXPIRES ON DATE	BALANCE OF TRACT REMAINING ACRES
29, 29T, 29T2	Robert G. and Wilma M. Weber	363124330009		8162	0.960	0.081	0.040	12-31-96	0.879
30, 30T	Barry Tolbert and Barbara J. Hall-Tolbert	363124330008		60631	0.565	0.038	0.012	12-31-96	0.527
31, 31T	Gladys M. and Theodore R. Patterson	353124440051		27959	0.846	0.047	0.018	12-31-96	0.799
32, 32T	Edward S. and Eva Marie Beach	353124440050		14384	0.489	0.027	0.022	12-31-96	0.462
33, 33T	Kenneth R. and Mary L. Witzel	353124440049		40439	0.498	0.018	0.009	12-31-96	0.480
34, 34T	James A. and Belinda A. Kuphal	353124440048		60707	0.474	0.015	0.013	12-31-96	0.459
35, 35T	Frances T. Ysteboe	353124440047		69503	0.603	0.016	0.012	12-31-96	0.587
36, 36T	J. Henry and Evelyn M. Wellberg	353124440016		7280	0.287	0.005	0.006	12-31-96	0.282
37, 37T	Erna L. Jacobson	353124440015	185665		0.431	0.005	0.011	12-31-96	0.426
38, 38T	Jack J. Soloman	353124410040 353124440085	812086		1.269	0.002	0.041	12-31-96	1.267
39, 39T	Finaserve, Inc.	363124320020	791585		0.302	0.005	0.019	12-31-96	0.297
40, 40T	Gregory J. Schweitzer	363124320019	640791		0.298	0.000007	0.009	12-31-96	0.298
41, 41T	Bernie W. Palmer	363124320013	745537		0.800	0.027	0.019	12-31-96	0.773
41A	Bernie W. Palmer	363124320013	745537		0.800	0.162			0.638
42, 42T	Alfred P. and Evelyn Krove	363124230011	210614		0.362	0.071	0.038	12-31-96	0.291
43	Commercial Development of Anoka	363124330015		58195	0.996	0.064			0.932
44, 44T	Frances Ysteboe, Etal.	363124330002	958842		2.609	0.205	0.025	12-31-96	2.404
45	Gerald W. and Janice C. Obraske	363124330001	252398		7.566	0.337			7.219
46	Eugene C. and Carol Joy Ewer	363124320012	709862		2.067	0.089			1.978
47, 47T	Shirley A. Maser	363124320010	1006101		0.804	0.128	0.012	12-31-96	0.676
48, 48T	County of Anoka	363124320190	1020596		0.165	0.156	0.005	12-31-96	0.009
49	Good Value Homes, Inc.	363124320218	997897		0.0531	0.0530			0.0001
50	Norway Street Townhome Association, Inc.	363124320207	1038997		0.474	0.001			0.473
51	Lida Construction, Inc.	363124320190		70533	0.056	0.056			0.000
52	Woodbridge Village of Coon Rapids Townhome Association, Inc.	363124320112		69172	0.296	0.006			0.290
53	Lida Construction, Inc.	363124320129	843314 899997		0.123	0.123			0.000
54, 54T, 54T2	Woodbridge Village of Coon Rapids Townhome Association, Inc.	363124320113	941098		0.592	0.034	0.015	12-31-96	0.558

DATA CONTAINED WITHIN THIS BOX FOR INSTRUCTIVE AND INFORMAL PURPOSES ONLY

PARCEL	OWNER	LOCATION: BY PARCEL IDENTIFICATION NUMBER (P.L.N.)	DEED RECORD DOCUMENT NO. OR BOOK, PAGE	TORRENS CERTIFICATE NUMBER	ENTIRE TRACT ACRES	NEW HIGHWAY RIGHT OF WAY ACRES	TEMPORARY EASEMENT ACRES	TEMP. EASE EXPIRES ON DATE	BALANCE OF TRACT REMAINING ACRES
55	Lida Construction, Inc.	363124320044	833427 852799		0.245	0.245			0.000
56, 56T	Woodbridge Village of Coon Rapids Townhome Association, Inc.	363124320043	856409		1.202	0.050	0.034	12-31-96	1.152
56A	Woodbridge Village of Coon Rapids Townhome Association, Inc.	363124320043	856409		1.202	0.140			1.062
57	Lida Construction, Inc.	363124320063	874826		0.052	0.010			0.042
92T	Jackson Company of Anoka	353124440085	298354				0.022	12-31-96	
93T	Cathy Ann Farah	363124320018	583429				0.009	12-31-96	
94T	Michael J. Walsh	363124320017	643138				0.009	12-31-96	
95T	Einar and Carin Gillean	363124320021	112268				0.016	12-31-96	
96T	Allen R. and Bonita J. Nelson	363124320023	717265				0.012	12-31-96	
97T	David J. and Joanne M. Granneman	363124320015	655020				0.012	12-31-96	
98T	Good Value Homes, Inc.	363124320186	1028580				0.008	12-31-96	

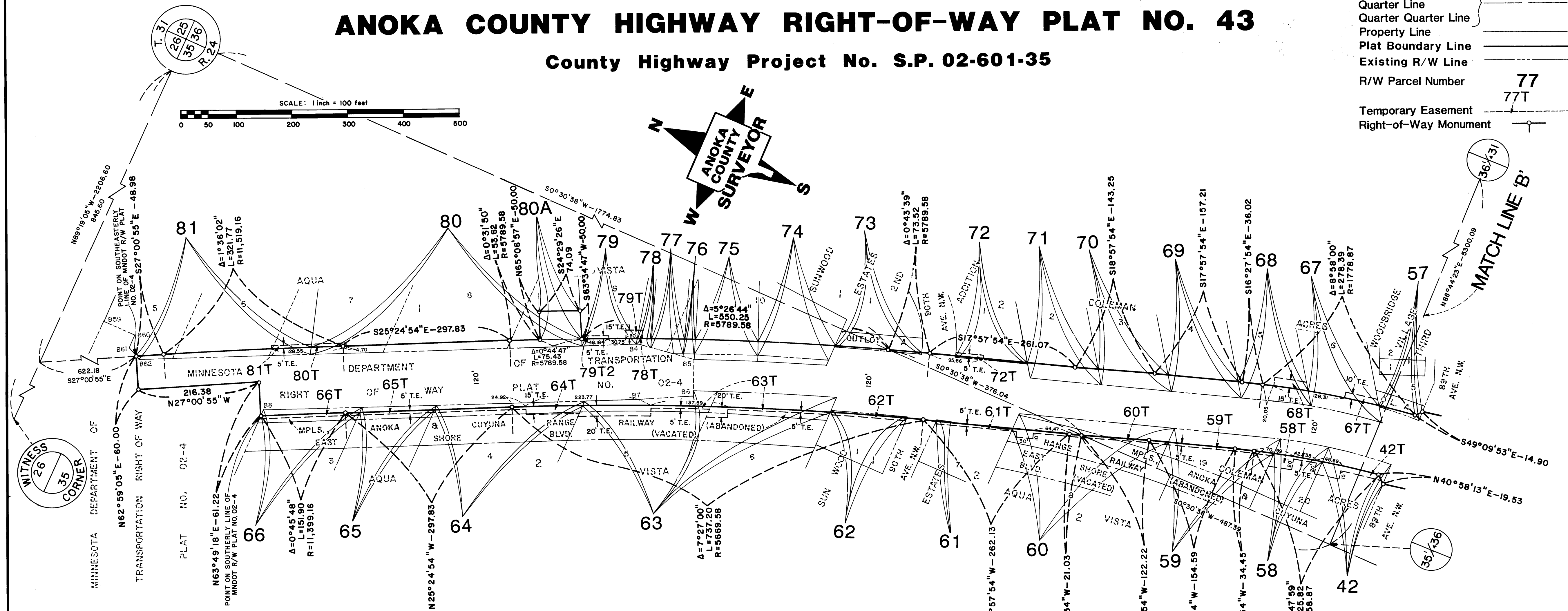
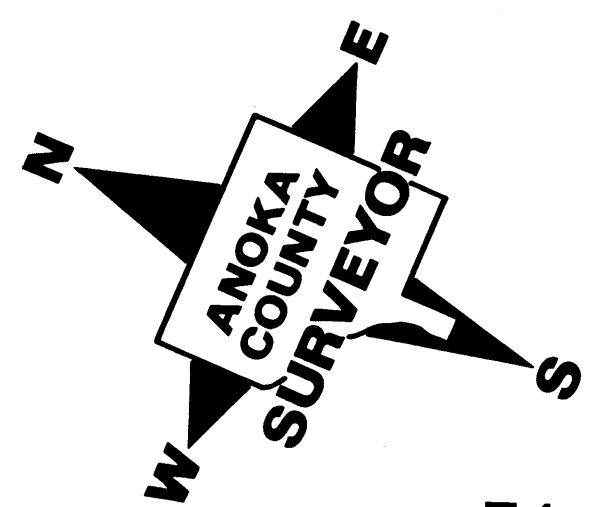
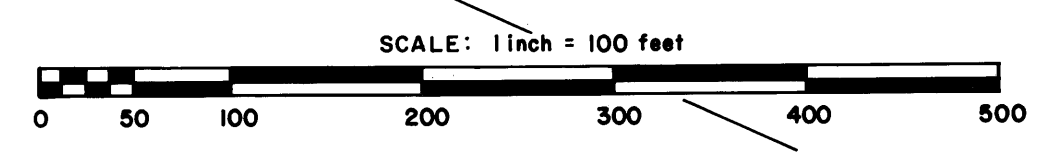


# ANOKA COUNTY HIGHWAY RIGHT-OF-WAY PLAT NO. 43

County Highway Project No. S.P. 02-601-35

**CONVENTIONAL SYMBOLS**

Section Line	_____
Quarter Line	_____
Quarter Quarter Line	_____
Property Line	_____
Plat Boundary Line	_____
Existing R/W Line	_____
R/W Parcel Number	77 77T
Temporary Easement	_____
Right-of-Way Monument	_____



DATA CONTAINED WITHIN THIS BOX FOR INSTRUCTIVE AND INFORMAL PURPOSES ONLY

PARCEL	OWNER	LOCATION: BY PARCEL IDENTIFICATION NUMBER (P.L.N.)	DEED RECORD DOCUMENT NO. OR BOOK, PAGE	TORRENS CERTIFICATE NUMBER	ENTIRE TRACT ACRES	NEW HIGHWAY RIGHT OF WAY ACRES	TEMPORARY EASEMENT ACRES	TEMP. EASE. EXPIRES ON DATE	BALANCE OF TRACT REMAINING ACRES
42, 42T	See Sheet 2								
57	See Sheet 2								
58, 58T	George A. Stein	363124230012	1043234		0.451	0.055	0.031	12-31-96	0.396
59, 59T	Patrick H. and Kay J. Barrett	363124230009	805965		0.446	0.108	0.022	12-31-96	0.338
60, 60T	Richard D. and Susan M. Sundahl	363124230010 353124140045	865401		2.390	0.167	0.039	12-31-96	2.223
61, 61T	Richard W. and Lori J. Dooley	353124140041	855988		0.300	0.00005	0.014	12-31-96	0.300
62, 62T	Robert J. and Stefanie J. Reardon	353124140028	945168		0.261	0.001	0.016	12-31-96	0.260
63, 63T	Allen L. and Sandra L. Erickson	353124140005	414972		4.751	0.205	0.107	12-31-96	4.546
64, 64T	Northern States Power Company	353124110015	340986		7.154	0.043	0.053	12-31-96	7.111
65, 65T	Northern States Power Company	353124110013	318915		2.399	0.025	0.015	12-31-96	2.374
66, 66T	Gary Wayne and Bonnie Andreen Olson	353124110014	836817		1.243	0.038	0.021	12-31-96	1.205
67, 67T	Lee J. Harris	363124230007	955465		1.523	0.080	0.014	12-31-96	1.443
68, 68T	Paul S. and Joanne C. Butenhoff	363124230006	861028		1.502	0.081	0.021	12-31-96	1.421
69	Francis K. and Sara M. Haukom	363124230005	388043		1.503	0.085			1.418
70	Warren A. and Marcella A. Osborne	363124230004	933992		1.502	0.083			1.419
71	Timothy W. and Margaret M. Morgan	363124230003	955687		1.503	0.080			1.423
72, 72T	Nedegaard Construction Company, Inc.	363124230029	945846		0.379	0.001	0.006	12-31-96	0.378
73	Bruce A. Nedegaard	363124230031	783776		0.094	0.004			0.090
74	Roger D. and Cheryl A. Brown	353124140001		73389	0.376	0.080			0.296
75	Ed G. Rasmussen	353124140002	389675		0.439	0.067			0.372
76	Ed G. Rasmussen	353124140047	894148		0.081	0.012			0.069
77	David A. Tyssedal	353124140048		73474	0.298	0.032			0.266
78, 78T	David A. Tyssedal	353124140046		73474	0.071	0.008	0.003	12-31-96	0.063
79, 79T, 79T2	Wasyly and Maria Burylo	353124110016	Unrecorded		0.582	0.027	0.013	12-31-96	0.555
80, 80T	Northern States Power Company	353124110007	318557		3.458	0.152	0.007	12-31-96	3.306
80A	Northern States Power Company	353124110007	318557		3.458	0.086			3.372
81, 81T	United Power and Land Company	353124110006	337342		3.682	0.073	0.008	12-31-96	3.609