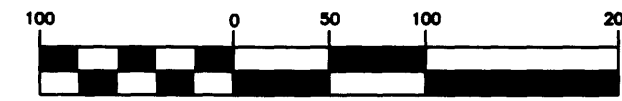
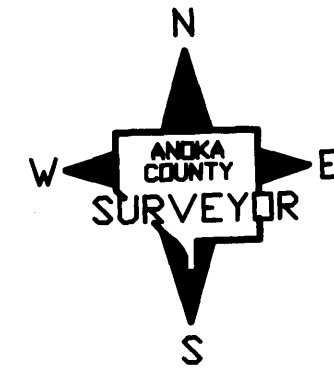


# ANOKA COUNTY HIGHWAY RIGHT-OF-WAY PLAT NO. 60

County Highway Project No. S.P. 02-635-09



SCALE: 1"=100'

**PROCEDURAL STATEMENTS**

1. The methods and equipment used in the control surveys for this plat and the checks made on monument locations were accomplished with electronic distance measuring devices.
2. Parcel areas and entire tract areas shown hereon are computed from legal descriptions and not from actual surveys.
3. Certificates of location are on file in the Office of the County Surveyor for the section corner monuments shown on this plat.
4. For the details of the control survey and land survey, contact the County Surveyor's Office for the survey of Anoka County Highway R/W Plat No. 60, County Project No. S.P. 02-635-09.
5. Bearings shown are based on Anoka County Project Coordinate System.

I hereby certify that this plat is a true and correct representation of the boundaries as shown, and that said plat was made under my direct supervision, that all distances are correctly shown in feet and hundredths of a foot, that the monuments for the guidance of future surveys will be correctly placed in the ground as shown after the completion of construction, and that there are no public highways to be designated on said plat other than as shown thereon.

*Larry D. Olson*  
 Larry D. Olson  
 Anoka County Surveyor  
 License No. 18165

Date APRIL 5, 2001

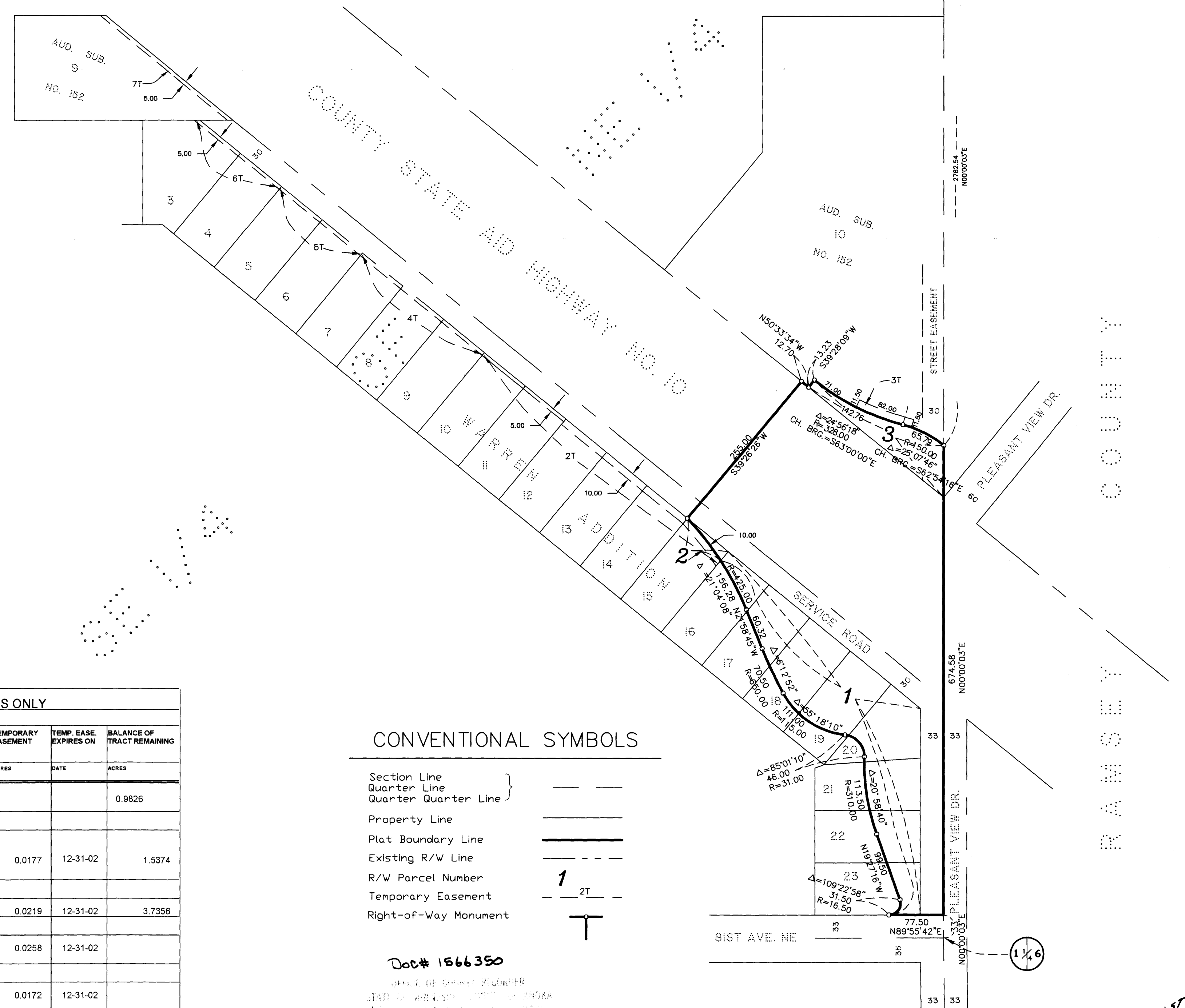
The Board of County Commissioners for Anoka County, Minnesota, pursuant to Board resolution Number 2000-107, dated September 12, 2000, is hereby designating the definite location of the right-of-way of County State Aid Highway No. 35 from 81st Avenue to Pleasant View Drive. That portion of said County State Aid Highway No. 35 located in Section 1, Township 30, Range 24, Anoka County, Minnesota, as shown on this plat effected by the County of Anoka, Department of Highways is hereby certified to be the official plat of that portion of said County State Aid Highway within said Section Pursuant to Minnesota Statutes 160.085.

Certified by *Jon D. Olson*  
 Jon D. Olson, County Highway Engineer  
 License No. 12183

Date 4/18, 2001

DATA CONTAINED WITHIN THIS BOX FOR INSTRUCTIVE AND INFORMAL PURPOSES ONLY

RIGHT-OF-WAY IN SECTION 1, Township 30, Range 24										
PARCEL	OWNER	LOCATION: BY PARCEL IDENTIFICATION NUMBER (P.I.N.)	DEED RECORD	TORRENS CERTIFICATE NUMBER	ENTIRE TRACT	EXISTING RIGHT OF WAY	NEW HIGHWAY RIGHT OF WAY	TEMPORARY EASEMENT	TEMP. EASE. EXPIRES ON	BALANCE OF TRACT REMAINING
1	GJW Group LTD	013024140020 thru 0027	1028953		1.9964		1.0138			0.9826
2 & 2T	John and Roann Mezzenga	013024140014 & 0015 013024140016 thru 0019	699280 699282		1.5498		0.0124	0.0177	12-31-02	1.5374
3 & 3T	Noahs Ark Affordable Housing Inc.	013024140005	1242853		3.9185		0.1829	0.0219	12-31-02	3.7356
4T	Hy-Way House Limited Liability Partnership Jeffrey Port, Contract Purchaser	013024140046	1421340					0.0258	12-31-02	
5T	RAD Properties	013024140011 013024140012	705703					0.0172	12-31-02	
6T	Jerry and Margie Truman	013024140009 013024140010	436923 499601					0.0176	12-31-02	
7T	James Rehbein	013024140001	842772					0.0271	12-31-02	



CONVENTIONAL SYMBOLS

- Section Line
- Quarter Line
- Quarter Quarter Line
- Property Line
- Plat Boundary Line
- Existing R/W Line
- R/W Parcel Number
- Temporary Easement
- Right-of-Way Monument

Doc# 1566350  
 OFFICE OF COUNTY ENGINEER  
 STATE OF MINNESOTA  
 I hereby certify that the above plat was prepared in accordance with the laws of the State of Minnesota on the 1st day of May, 2001  
 at 9:50 o'clock AM, and was duly recorded in Book 3 CORW, page 29  
*Maurice J. Orvine*  
 County Engineer

Rec # 2001035039 \$ 0.00

Checked and approved this 13<sup>th</sup> day of May, 2001 A.D.  
*Larry D. Olson*  
 Anoka County Surveyor