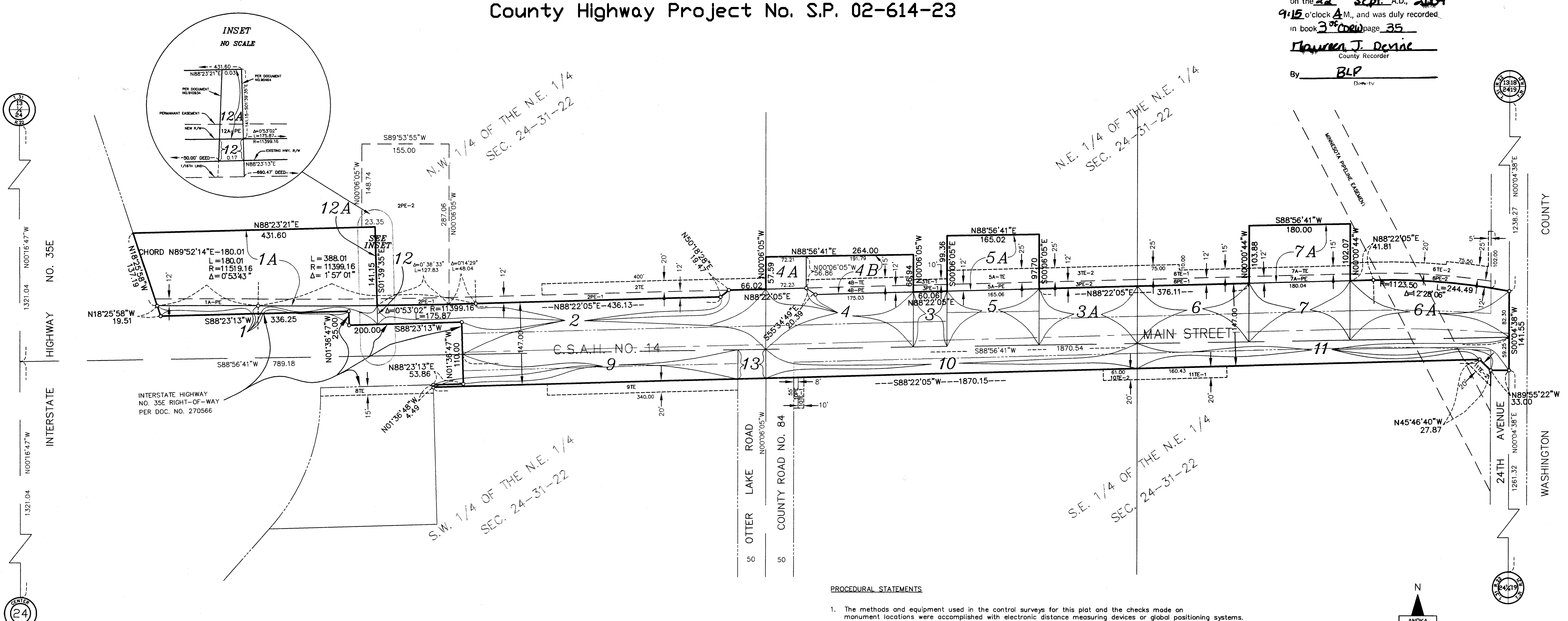


ANOKA COUNTY HIGHWAY RIGHT-OF-WAY PLAT NO. 65

County Highway Project No. S.P. 02-614-23

1958835
 OFFICE OF COUNTY RECORDER
 STATE OF MINNESOTA, COUNTY OF ANOKA
 I hereby certify that the within instrument was filed in this office for record on the 22 Sept A.D., 2004
 9:15 o'clock A.M., and was duly recorded in book 3 of Corw page 35
Maureen J. Devine
 County Recorder

By BLP
 Deputy



DATA CONTAINED WITHIN THIS BOX FOR INSTRUCTIVE AND INFORMAL PURPOSES ONLY

RIGHT-OF-WAY IN SECTION 24, TOWNSHIP 31, RANGE 22

PARCEL	OWNER	LOCATION: BY PARCEL IDENT. NUMBER (PIN)	DEED RECORD DOCUMENT NO. OR BOOK, PAGE	TORRENS CERTIFICATE NUMBER	ENTIRE TRACT		EXISTING RIGHT OF WAY		NEW HWY. RIGHT OF WAY		PERMANENT EASEMENT ACRES / SQUARE FEET	TEMPORARY EASEMENT ACRES / SQUARE FEET	TEMPORARY EASEMENT EXPIRES DATE	BALANCE OF TRACT REMAINING ACRES / SQUARE FEET
					ACRES / SQUARE FEET	ACRES / SQUARE FEET	ACRES / SQUARE FEET	ACRES / SQUARE FEET	ACRES / SQUARE FEET	ACRES / SQUARE FEET				
1, 1A & 1A-PE	STEPHEN P. NELSON LAND COMPANY	243122120002	910934		1.4366	0.1499	0.1499	0.1084						1.2867
2, 2TE, 2PE-1 & 2PE-2	RICHARD J. SCHREIER	243122120001		90464	62,581.87	6,532.59	4,725.89	0.1835	12/31/06				56,049.28	
3, 3A, 3TE-1, 3TE-2, 3PE-1 & 3PE-2	FRANCIS E. BERNIER	243122110001	243703		34,474.8	0.4878	0.7987	1.0800					33,188.3	
4, 4A, 4B, 4B-TE & 4B-PE	COUNTY OF ANOKA	243122110002	1519408		1,501,726.58	21,249.60	34,795.23	47,048.33	7,994.66	12/31/06			1,445,681.75	
5, 5A, 5A-TE & 5A-PE	COUNTY OF ANOKA	243122110003	297968		18,438.8	0.2517	0.2926	0.0650	0.1148	12/31/06			17,894.5	
6, 6A, 6TE-1, 6TE-2, 6PE-1 & 6PE-2	REHBEIN PROPERTIES	243122110005	1357482		803,194.55	10,963.31	12,748.02	2,833.50	5,003.03	12/31/06			779,483.22	
7, 7A, 7A-TE & 7A-PE	COUNTY OF ANOKA	243122110004	1952076		43,553.96	11,297.35	15,204.83	2,201.14	2,877.47	12/31/06			17,051.78	
8TE	RICHARD J. SCHREIER	243122130002	1375258		0.9998	0.2593	0.3490	0.0505	0.0660				0.3915	
9 & 9TE	RICHARD J. SCHREIER	243122130004		90464	0.7501	0.2273	0.1496	0.0454	0.0947				0.3732	
10, 10TE-1, 10TE-2 & 10PE	TAYLOR CORPORATION	243122140002	1246934, 1246935		32,674.52	9,901.37	6,516.16	1,980.70	4,126.50	12/31/06			16,256.99	
11, 11TE-1 & 11TE-2	MARK NAYLON, ETAL, AS TRUSTEES OF THE BENEFIT OF THE CONSTRUCTION LABORERS EDUCATION AND TRAINING FUND OF MN. & ND.	243122140003	1094695		19,327.0	0.5422	0.5843	0.1247	0.2188				18,200.5	
12, 12A & 12A-PE	UNKNOWN				841,888.15	23,620.75	25,452.17	5,434.16	9,532.89	12/31/06			792,815.23	
13	UNKNOWN				0.8593	0.2107	0.2232	0.0495	0.0619				0.4254	
					29,237.4	0.3034	0.3164	0.0101	0.0405	12/31/06			19,389.3	
					1,273,581.63	13,218.23	13,776.96	440.85	1,767.81	12/31/06			844,597.20	
					20,126.4	0.3244	0.4127	0.0101	0.0405	12/31/06			19,389.3	
					876,706.11	14,130.99	17,977.92	440.85	1,767.81	12/31/06			844,597.20	
					20,126.4	0.2549	0.4001	0.0955	0.0955	12/31/06			19,489.0	
					876,605.02	11,104.70	17,430.19	4,160.01	4,160.01	12/31/06			848,070.13	
					0.0004	0.0001	0.00004						0.0003	
					17.72	5.37	1.68						12.35	
					0.0595	0.0595							0.0000	
					2,594.89	2,594.89							0.0000	

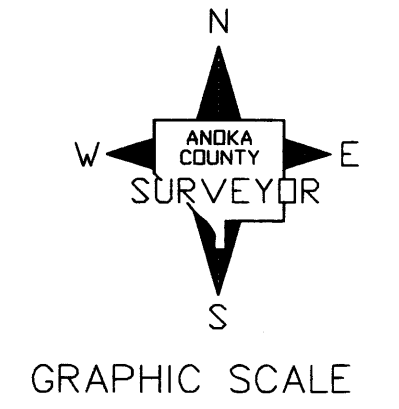
PROCEDURAL STATEMENTS

- The methods and equipment used in the control surveys for this plat and the checks made on monument locations were accomplished with electronic distance measuring devices or global positioning systems.
- Parcel areas and entire tract areas shown hereon are computed from legal descriptions and not from actual surveys.
- Certificates of location are on file in the Office of the County Surveyor for the section corner monuments shown on this plat.
- For the details of the control survey and land survey, contact the County Surveyor's Office for the survey of Anoka County Highway R/W Plat No. 65, County Project No. S.P. 02-614-23.
- Bearings shown are based on Anoka County Project Coordinate System, NAD83 (1996 Adjustment).

I hereby certify that this plat is a true and correct representation of the boundaries as shown, and that said plat was made under my direct supervision, that all distances are correctly shown in feet and hundredths of a foot, that the monuments for the guidance of future surveys will be correctly placed in the ground as shown after the completion of construction, and that there are no public highways to be designated on said plat other than as shown thereon.

Office of REGISTRAR OF TITLES
 STATE OF MINNESOTA 476969.0
 COUNTY OF ANOKA
 I hereby certify that the within instrument was filed in this office on Sept 22, 2004 at 9:15 o'clock A.M.
 by Maureen J. Devine, Registrar of Titles
 Date SEPTEMBER 14, 2004
 By GKE Deputy Registrar of Titles

ENTERED
 ON Sept 22 2004
 MAUREEN J. DEVINE
 COUNTY CLERK
 PROPERTY TAX ADMINISTRATOR
 DEPUTY PROPERTY TAX ADMINISTRATOR



CONVENTIONAL SYMBOLS

- Section Line
- Quarter Line
- Quarter Quarter Line
- Property Line
- Plat Boundary Line
- Existing R/W Line
- R/W Parcel Number
- Temporary Easement
- Permanent Easement
- Right-of-Way Monument

The Board of County Commissioners for Anoka County, Minnesota, pursuant to Board Resolution Number 2003-91, dated July 8, 2003, is hereby designating the definite location of the right-of-way of County State Aid Highway No. 14 (Main Street) from the east county line to approximately 3,975 feet west of the east county line. This plat, effected by the County of Anoka, Department of Highways, is hereby certified to be the official plat of that portion of said County State Aid Highway No. 14, located in Section 24, Township 31, Range 22, Anoka County, Minnesota as shown on this plat, Pursuant to Minnesota Statutes 160.085

Certified by Douglas M. Fischer, County Highway Engineer
 License No. 20235
 Date Sept 14, 2004

NOTE
 All parcels shown on this plat may not be purchased by Anoka County. Check pertinent documents for each parcel.