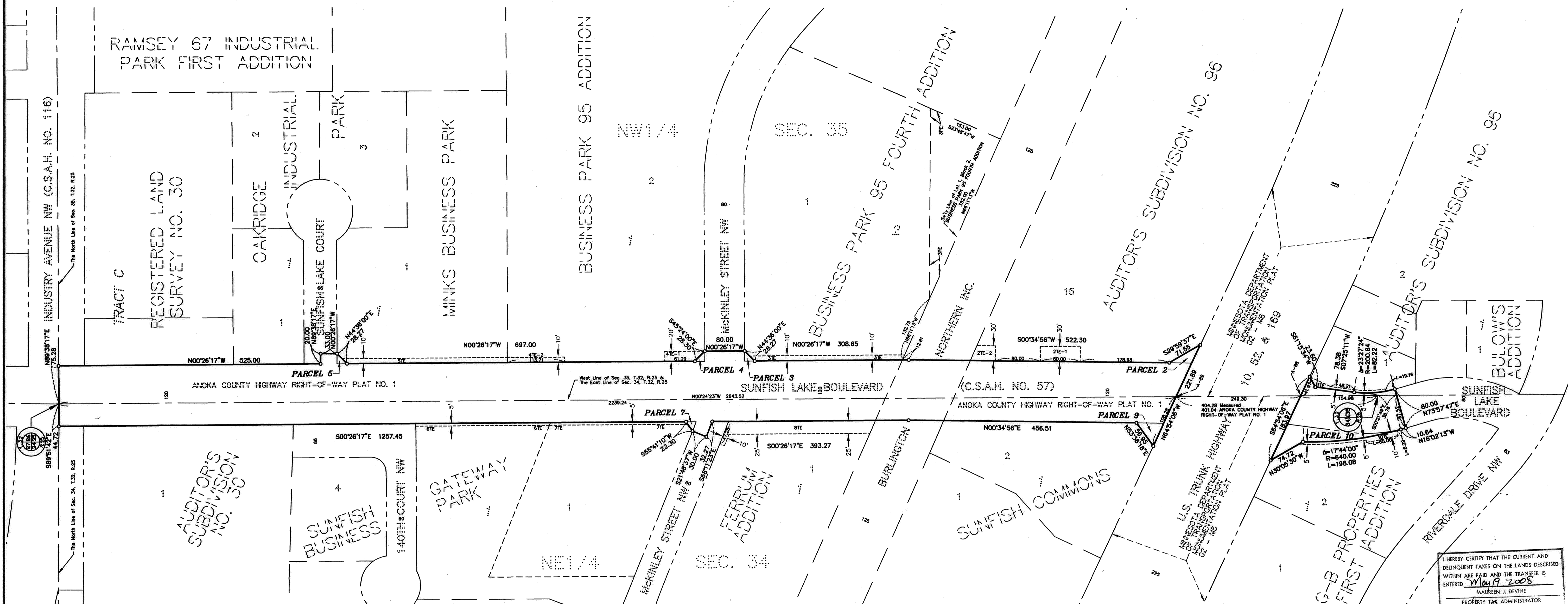


ANOKA COUNTY HIGHWAY RIGHT-OF-WAY PLAT NO. 72

Bk 3 of CORW pg 41

County Highway Project No. S.P. 02-657-02



DATA CONTAINED WITHIN THIS BOX FOR INSTRUCTIVE AND INFORMAL PURPOSES ONLY

RIGHT-OF-WAY IN SECTIONS 34 & 35, TOWNSHIP 32, RANGE 25

PARCEL	OWNER	LOCATION: BY PARCEL IDENT. NUMBER (PIN)	DEED RECORD DOCUMENT NO. OR BOOK, PAGE	TORRENS CERTIFICATE NUMBER	ENTIRE TRACT ACRES / SQUARE FEET	EXISTING RIGHT OF WAY ACRES / SQUARE FEET	NEW HWY. RIGHT OF WAY ACRES / SQUARE FEET	PERMANENT EASEMENT ACRES / SQUARE FEET	TEMPORARY EASEMENT ACRES / SQUARE FEET	TEMPORARY EASEMENT EXPIRES DATE	BALANCE OF TRACT REMAINING ACRES / SQUARE FEET
1TE	BP AMERICA, INC.	353225230003	1356773		0.4374	0.4374	0.0218	0.0218	0.4374	12/31/09	0.4374
2, 2TE-1 & 2TE-2	HICKMAN LAND INVESTMENTS	353225230016		95935 & 100385	11.7654	0.0188	0.0851	0.0851	11.7466	12/31/09	11.7466
3, 3PE & 3TE	McKINLEY BUILDING, LLC	353225230013	90031		5.3413	0.0046	0.6182	0.0696	5.3367	12/31/09	5.3367
4, 4TE-1 & 4TE-2	COMMAND TOOLING ACQUISITION, LLC	353225220019	82554		232668	0.0046	26928	3031	232468	12/31/09	232468
5 & 5TE	MINKS PROPERTIES, LLC	353225220023	107977		7.0082	0.0046	0.0588	0.0588	7.0036	12/31/09	7.0036
6TE	S & A PARTNERS, LLC	343225110031	1743584		305276	0.0046	0.0751	0.0751	305076	12/31/09	305076
7 & 7TE	S & A PARTNERS, LLC	343225110030	1743584		3.3960	0.0046	0.0309	0.0309	3.3814	12/31/09	3.3814
8TE	PECK PROPERTIES, L.L.C.	343225140019	1572650		147493	0.0042	1345	1345	147293	12/31/09	147293
9	VANAK, LLC	343225140027	1724907		1.9413	0.0042	0.0315	0.0315	1.9133	12/31/09	1.9133
10 & 10TE	G-B PROPERTIES	343225140022	84191		84563	0.0042	1374	1374	84563	12/31/09	84563
					2,0626	0.0042	185	185	2,0584	12/31/09	2,0584
					89847	0.0042	1374	1374	89662	12/31/09	89662
					3,9723	0.0042	1374	1374	3,9723	12/31/09	3,9723
					173033	0.0042	1374	1374	173033	12/31/09	173033
					1,6467	0.0287	1251	1251	1,6180	12/31/09	1,6180
					7,1729	0.0287	1251	1251	7,0478	12/31/09	7,0478
					1,8139	0.1152	0.0298	0.0298	1,6987	12/31/09	1,6987
					7,9014	0.1152	0.0298	0.0298	7,3997	12/31/09	7,3997

- PROCEDURAL STATEMENTS**
- The methods and equipment used in the control surveys for this plat and the checks made on monument locations were accomplished with electronic distance measuring devices or global positioning systems.
 - Parcel areas and entire tract areas shown hereon are computed from legal descriptions and not from actual surveys.
 - Certificates of location are on file in the Office of the County Surveyor for the section corner monuments shown on this plat.
 - For the details of the control survey and land survey, contact the County Surveyor's Office for the survey of Anoka County Highway R/W Plat No. 72, County Project No. S.P. 02-657-02.
 - Bearings shown are based on Anoka County Project Coordinate System, NAD83 (1996 Adjustment).

I hereby certify that this plat is a true and correct representation of the boundaries as shown, and that said plat was made under my direct supervision, that all distances are correctly shown in feet and hundredths of a foot, that the monuments for the guidance of future surveys will be correctly placed in the ground as shown after the completion of construction, and that there are no public highways to be designated on said plat other than as shown thereon.

Larry D. Hight
 Larry D. Hight
 Anoka County Surveyor
 License No. 18165

Date MAY 19, 2008

The Board of County Commissioners for Anoka County, Minnesota, pursuant to Board Resolution Number 2008-13, dated January 22, 2008, is hereby designating the definite location of the right-of-way of County State Aid Highway No. 57 (Sunfish Lake Boulevard) from 350 feet south of Trunk Highway 10 to a point 450 feet south of County State Aid Highway No. 116 (Bunker Lake Boulevard). This plat, effected by the County of Anoka, Department of Highways, is hereby certified to be the official plat of that portion of said County State Aid Highway No. 57, located in Sections 34 and 35, Township 32, Range 25, Anoka County, Minnesota, as shown on this plat, pursuant to Minnesota Statutes 160.085.

Certified by *Douglas W. Fischer*
 Douglas W. Fischer, County Highway Engineer
 License No. 20235

Date MAY 19, 2008

NOTE
 All parcels shown on this plat may not be purchased by Anoka County. Check pertinent documents for each parcel.

2000713-002
 OFFICE OF COUNTY RECORDER
 STATE OF MINNESOTA, COUNTY OF ANOKA
 I hereby certify that the within instrument was filed in this office for record on the 19th day of May, A.D., 2008 at 11:40 o'clock A.M., and was duly recorded in book 24 of CORW, page 41
Maureen J. Devine
 Maureen J. Devine
 County Recorder

THESEY CERTIFY THAT THE CURRENT AND DELINQUENT TAXES ON THE LANDS DESCRIBED WITHIN ARE PAID AND THE TRANSFER IS ENTERED
May 19 2008
 MAUREEN J. DEVINE
 PROPERTY TAX ADMINISTRATOR
 BY *[Signature]*
 DEPUTY PROPERTY TAX ADMINISTRATOR

ANOKA COUNTY SURVEYOR

GRAPHIC SCALE
 1 inch = 100 ft.

CONVENTIONAL SYMBOLS

- Section Line
- Quarter Line
- Quarter Quarter Line
- Property Line
- Plat Boundary Line
- Existing R/W Line
- R/W Parcel Number
- Temporary Easement
- Permanent Easement
- Right-of-Way Monument

Parcel 1