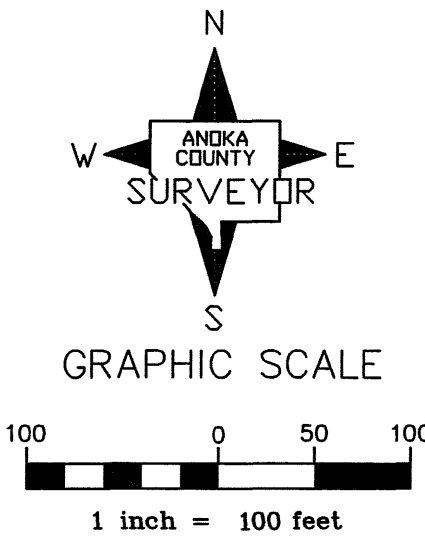
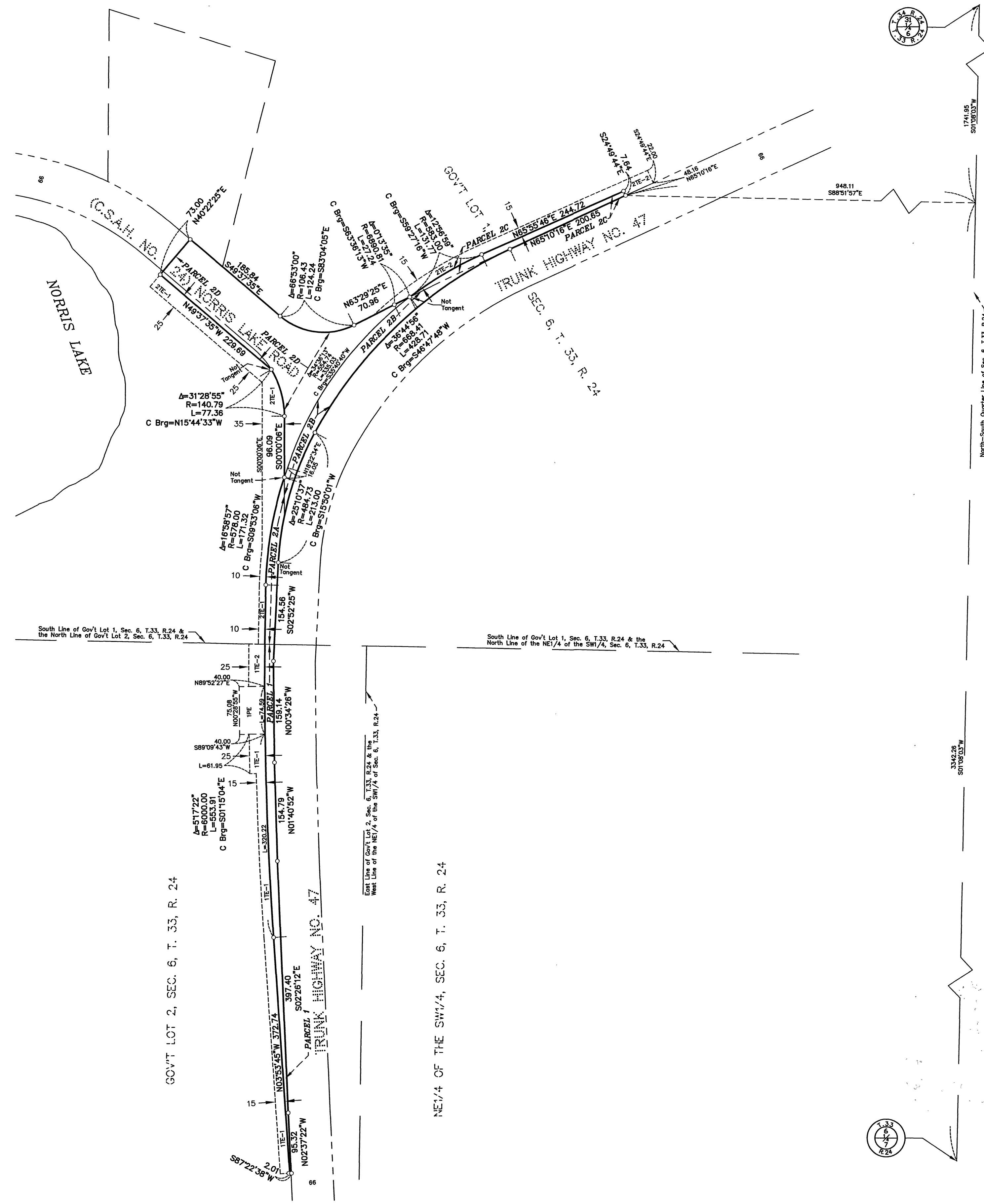


ANOKA COUNTY HIGHWAY RIGHT-OF-WAY PLAT NO. 76

County Highway Project No. S.P. 02-624-24



CONVENTIONAL SYMBOLS

- Section Line _____
- Quarter Line _____
- Quarter Quarter Line _____
- Property Line _____
- Plat Boundary Line _____
- Existing R/W Line _____
- R/W Parcel Number 1
- Temporary Easement 2TE
- Permanent Easement 2PE
- Right-of-Way Monument

NOTE
All parcels shown on this plat may not be purchased by Anoka County. Check pertinent documents for each parcel.

PROCEDURAL STATEMENTS

1. The methods and equipment used in the control surveys for this plat and the checks made on monument locations were accomplished with electronic distance measuring devices or global positioning systems.
2. Parcel areas and entire tract areas shown hereon are computed from legal descriptions and not from actual surveys.
3. Certificates of location are on file in the Office of the County Surveyor for the section corner monuments shown on this plat.
4. For the details of the control survey and land survey, contact the County Surveyor's Office for the survey of Anoka County Highway R/W Plat No. 76, County Highway Project No. S.P. 02-624-24.
5. Bearings shown are based on Anoka County Project Coordinate System, NAD83 (1996 Adjustment).

I hereby certify that this plat is a true and correct representation of the boundaries as shown, and that said plat was made under my direct supervision, that all distances are correctly shown in feet and hundredths of a foot, that the monuments for the guidance of future surveys will be correctly placed in the ground as shown after the completion of construction, and that there are no public highways to be designated on said plat other than as shown thereon.

Larry D. Hoff
Larry D. Hoff, Anoka County Surveyor
License No. 18165

Date APRIL 28, 2009

The Board of County Commissioners for Anoka County, Minnesota, pursuant to Board Resolution Number 2008-138, dated November 25, 2008, is hereby designating the definite location of the right-of-way of County State Aid Highway No. 24 from 347 feet west of Trunk Highway 47 to Trunk Highway 47, and 596 feet north of CSAH 24 to 1,233 feet south of CSAH 24. This plat effected by the County of Anoka, Department of Highways, is hereby certified to be the official plat of that portion of said County State Aid Highway No. 24, located in Section 6, Township 33, Range 24, Anoka County, Minnesota, as shown on this plat, pursuant to Minnesota Statutes 160.085.

Certified by: *Douglas W. Fischer*
Douglas W. Fischer, County Highway Engineer
License No. 20235

Date 4/28, 2009

2007087.001
OFFICE OF COUNTY RECORDER
STATE OF MINNESOTA, COUNTY OF ANOKA
I hereby certify that the within instrument was filed in this office for record on the 28 April AD, 2009 at o'clock P.M., and was duly recorded in Book 3 CORW page 43
Maura Davina
County Recorder
BMC

DATA CONTAINED WITHIN THIS BOX FOR INSTRUCTIVE AND INFORMAL PURPOSES ONLY

RIGHT-OF-WAY IN SECTION 6, TOWNSHIP 33, RANGE 24

PARCEL	OWNER	LOCATION: BY PARCEL IDENT. NUMBER (PIN)	DEED RECORD NUMBER	TORRENS CERTIFICATE NUMBER	ENTIRE TRACT	EXISTING RIGHT OF WAY	NEW HWY. RIGHT OF WAY	PERMANENT EASEMENT	TEMPORARY EASEMENT	TEMPORARY EASEMENT EXPIRES	BALANCE OF TRACT REMAINING
					ACRES / SQUARE FEET	ACRES / SQUARE FEET	ACRES / SQUARE FEET	ACRES / SQUARE FEET	ACRES / SQUARE FEET	DATE	ACRES / SQUARE FEET
1, 1PE, 1TE-1 & 1TE-2	VOLUNTEERS OF AMERICA IN MINNESOTA	063324320001	255397		37.3*	1.9956	0.1992	0.0686	0.2911	12/31/10	35.1*
2A, 2B, 2C, 2D, 2TE-1 & 2TE-2	VOLUNTEERS OF AMERICA IN MINNESOTA	063324240001	255397		66.4*	5.4891	0.2008	2988	0.5074	12/31/10	60.7*
						239106	8746		22101		

* AREAS SHOWN ARE APPROXIMATE DUE TO NORRIS LAKE BEING A BOUNDARY OF THE TRACTS