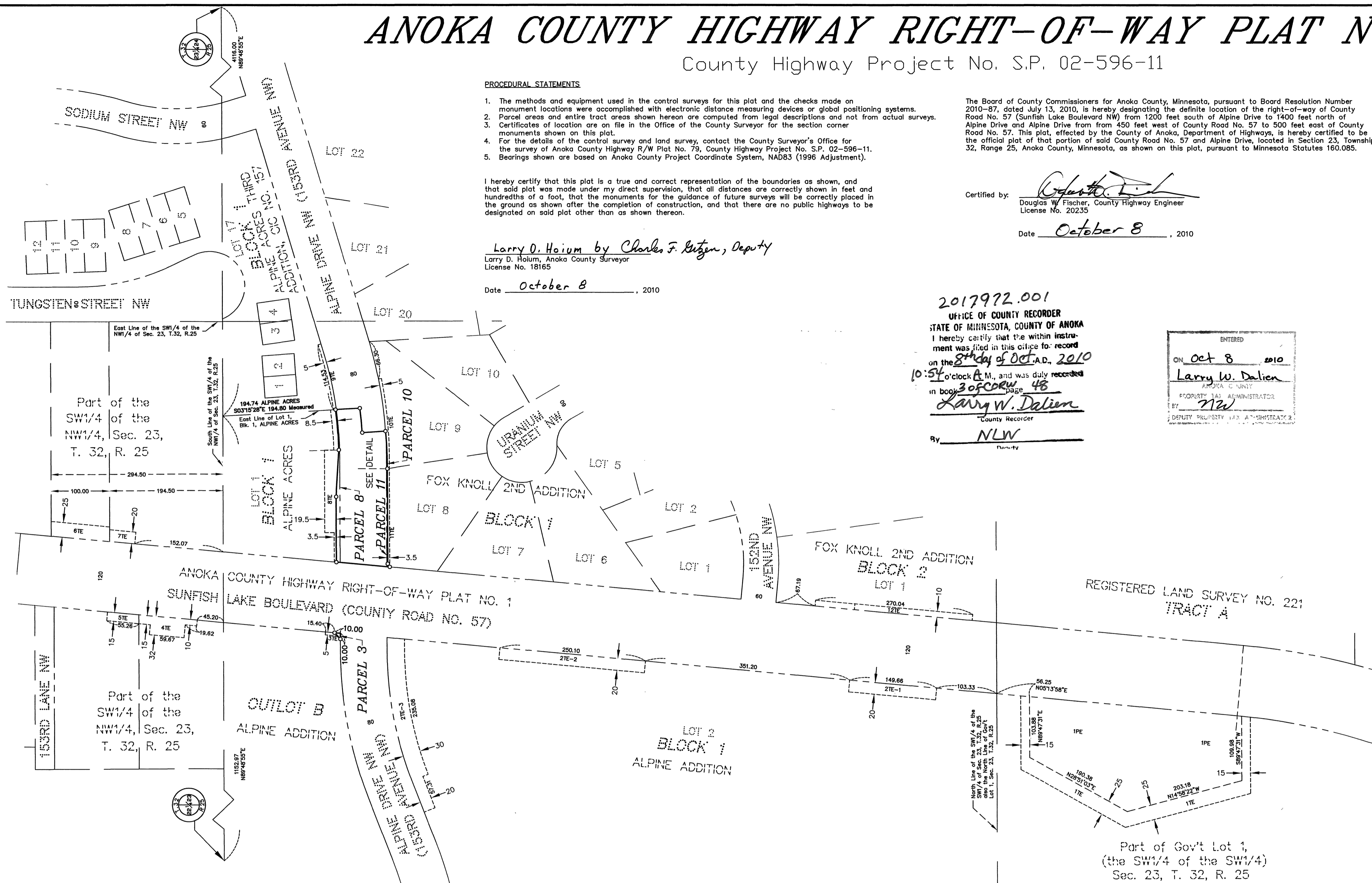


# ANOKA COUNTY HIGHWAY RIGHT-OF-WAY PLAT NO. 79

BK 3 of CORW Pg 48

County Highway Project No. S.P. 02-596-11



- PROCEDURAL STATEMENTS**
- The methods and equipment used in the control surveys for this plat and the checks made on monument locations were accomplished with electronic distance measuring devices or global positioning systems.
  - Parcel areas and entire tract areas shown hereon are computed from legal descriptions and not from actual surveys.
  - Certificates of location are on file in the Office of the County Surveyor for the section corner monuments shown on this plat.
  - For the details of the control survey and land survey, contact the County Surveyor's Office for the survey of Anoka County Highway R/W Plat No. 79, County Highway Project No. S.P. 02-596-11.
  - Bearings shown are based on Anoka County Project Coordinate System, NAD83 (1996 Adjustment).

I hereby certify that this plat is a true and correct representation of the boundaries as shown, and that said plat was made under my direct supervision, that all distances are correctly shown in feet and hundredths of a foot, that the monuments for the guidance of future surveys will be correctly placed in the ground as shown after the completion of construction, and that there are no public highways to be designated on said plat other than as shown thereon.

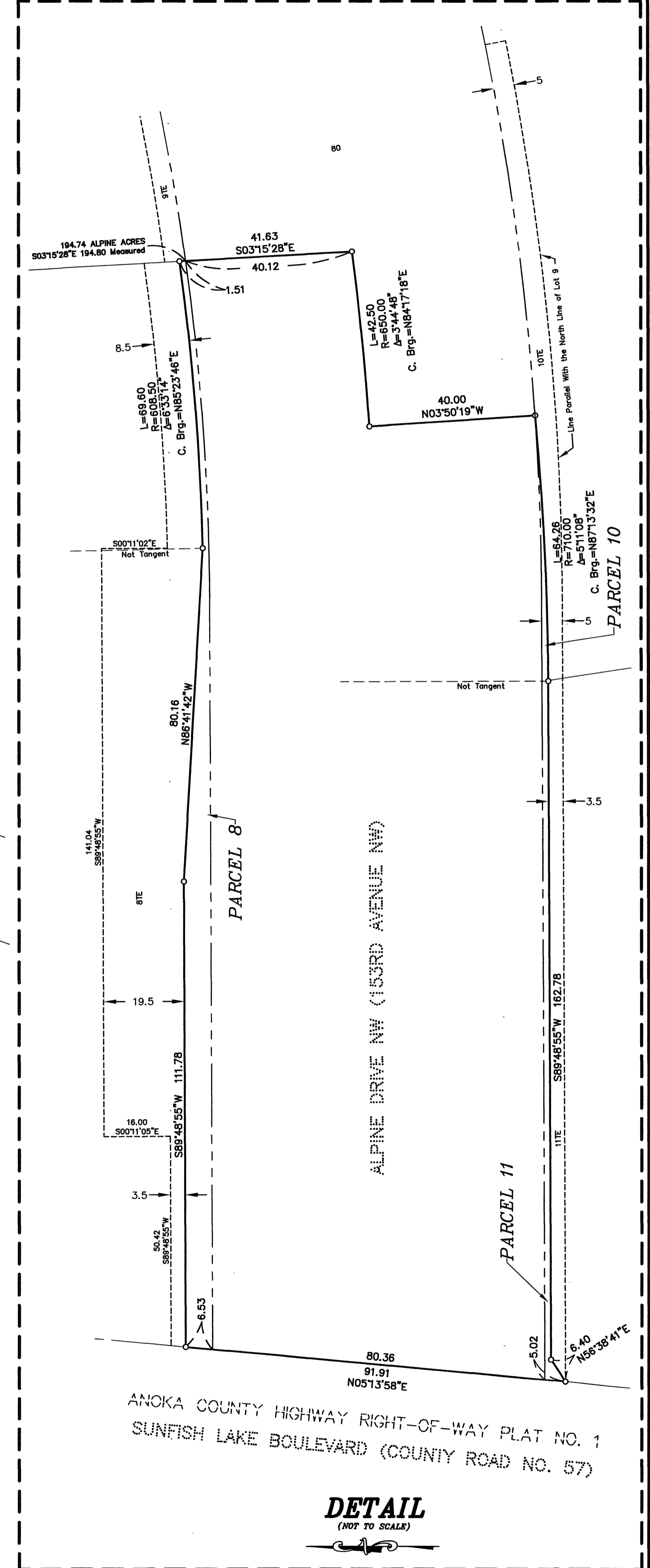
Larry D. Holm by Charles F. Ritzgen, Deputy  
 Larry D. Holm, Anoka County Surveyor  
 License No. 18165

Date October 8, 2010

Certified by: [Signature]  
 Douglas W. Fischer, County Highway Engineer  
 License No. 20235  
 Date October 8, 2010

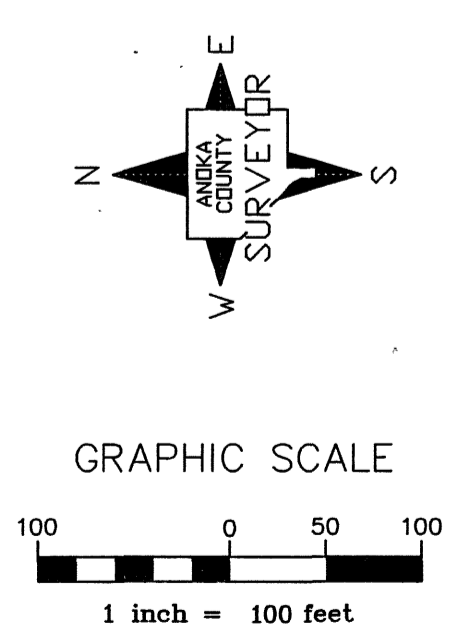
2017972.001  
 OFFICE OF COUNTY RECORDER  
 STATE OF MINNESOTA, COUNTY OF ANOKA  
 I hereby certify that the within instrument was filed in this office for record on the 8th day of Oct. A.D. 2010 at 10:54 o'clock A.M. and was duly recorded in book 30 of CORW page 48  
Larry W. Dalien  
 County Recorder  
 By NLW Deputy

ENTERED  
 ON Oct 8 2010  
Larry W. Dalien  
 ANOKA COUNTY  
 COUNTY CLERK  
 BY [Signature]  
 DEPUTY COUNTY CLERK



**DATA CONTAINED WITHIN THIS BOX FOR INSTRUCTIVE AND INFORMAL PURPOSES ONLY**

RIGHT-OF-WAY IN SECTION 23, TOWNSHIP 32, RANGE 25												
PARCEL	OWNER	LOCATION: BY PARCEL IDENT. NUMBER (PIN)	DEED RECORD DOCUMENT NO. OR BOOK, PAGE	TORRENS CERTIFICATE NUMBER	ENTIRE TRACT		NEW HWY. RIGHT OF WAY	PERMANENT EASEMENT	TEMPORARY EASEMENT	TEMPORARY EASEMENT EXPIRES DATE	BALANCE OF TRACT REMAINING	
					ACRES / SQUARE FEET	ACRES / SQUARE FEET						
1PE & 1TE	STATE OF MINNESOTA	233225330010	1628042		9.4862	413217		1.1984	0.3160	12/31/2012	9.4862	
2TE-1, 2TE-2 & 2TE-3	CITY OF RAMSEY	233225320007	1227566		15.9167	693333		52201	0.3766	12/31/2012	15.9167	
3 & 3TE	CITY OF RAMSEY	233225320008	1227566		4.9906	217392	0.0011		0.0021	12/31/2012	4.9895	
4TE	ROBERT T. & VALERIE A. EHALT	233225320015	320270		0.8490	36983			0.0554	12/31/2012	0.8490	
5TE	GERALD M. & MARIA L. KALSTABAKKEN KALSTABAKKEN FAMILY TRUST	233225320016	1103127		1.1048	48126	0.2100		0.0188	12/31/2012	0.8948	
6TE	DONALD & BERNIECE CARDA	233225320022	623603		0.8534	37174			0.0576	12/31/2012	0.8534	
7TE	MICHAEL LANCE METTLER JR.	233225320039	1821989		1.7213	74978			0.0203	12/31/2012	1.7213	
8 & 8TE	ROBERT & NANCY CIENIK	233225320028	1965864		1.1306	49247	0.0266		0.0852	12/31/2012	1.1040	
9TE	ALPINE ACRES ASSOCIATION	233225320171	1975773.009		2.8074	122289			0.0132	12/31/2012	2.8074	
10 & 10TE	CHRISTOPHER DOMINIC TAYLOR & LYNDESE ERIN TAYLOR	233225320017	1987068.013		2.5904	122289			0.0165	12/31/2012	2.5849	
11 & 11TE	ESTHER Z. GEEGBAE & WISSEH M. GEEGBAE	233225320016	1989658.010		2.7713	122289			0.0133	12/31/2012	2.7580	
12TE	LARRY FRANDSON & BARBARA J. FRANDSON	233225320021	1991187.001		1.3316	58003			0.0620	12/31/2012	1.3316	



- CONVENTIONAL SYMBOLS**
- Section Line: ---
  - Quarter Line: ---
  - Quarter Quarter Line: ---
  - Property Line: ---
  - Plat Boundary Line: ---
  - Existing R/W Line: ---
  - R/W Parcel Number: 1
  - Temporary Easement: --- 2TE ---
  - Permanent Easement: --- 2PE ---
  - Right-of-Way Monument: ---

**NOTE**  
 All parcels shown on this plat may not be purchased by Anoka County. Check pertinent documents for each parcel.

\$0

**DETAIL**  
 (NOT TO SCALE)