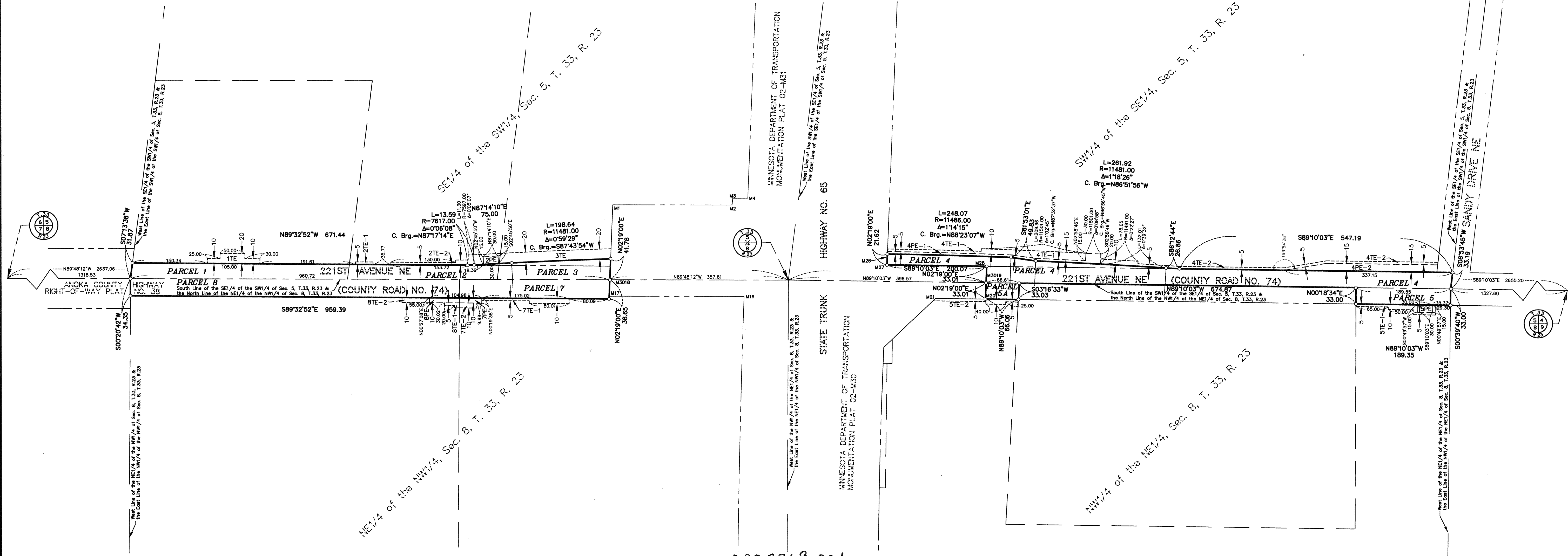


ANOKA COUNTY HIGHWAY RIGHT-OF-WAY PLAT NO. 84

County Highway Project No. S.P. 02-596-15



PROCEDURAL STATEMENTS

- The methods and equipment used in the control surveys for this plat and the checks made on monument locations were accomplished with electronic distance measuring devices or global positioning systems.
- Parcel areas and entire tract areas shown hereon are computed from legal descriptions and not from actual surveys.
- Certificates of location are on file in the Office of the County Surveyor for the section corner monuments shown on this plat.
- For the details of the control survey and land survey, contact the County Surveyor's Office for the survey of Anoka County Highway R/W Plat No. 84, County Highway Project No. S.P. 02-596-15.
- Bearings shown are based on Anoka County Coordinate System, NAD83 (1996 Adjustment).

I hereby certify that this plat is a true and correct representation of the boundaries as shown, and that said plat was made under my direct supervision, that all distances are correctly shown in feet and hundredths of a foot, that the monuments for the guidance of future surveys will be correctly placed in the ground as shown after the completion of construction, and that there are no public highways to be designated on said plat other than as shown thereon.

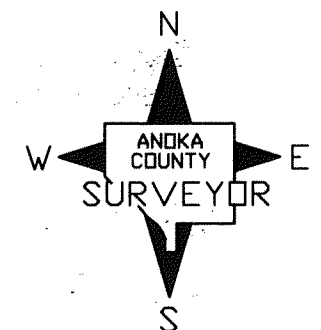
Larry D. Halburn
 Larry D. Halburn, Anoka County Surveyor
 License No. 18165

Date JANUARY 26, 2012

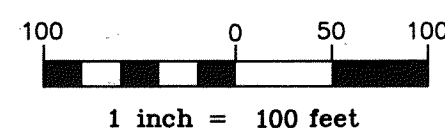
The Board of County Commissioners for Anoka County, Minnesota, pursuant to Board Resolution Number 2011-70, dated May 24, 2011, is hereby designating the definite location of the right-of-way of County Road No. 74 (221st Avenue NE) from 1500 feet west of State Trunk Highway No. 65 to 1500 feet east of State Trunk Highway No. 65 in the City of East Bethel. This plat, effected by the County of Anoka, Department of Highways, is hereby certified to be the official plat of said County Road No. 74 (221st Avenue NE) located in Sections 5 and 8, Township 33, Range 23, Anoka County, Minnesota, as shown on this plat, pursuant to Minnesota Statutes 160.085.

Certified by: *Douglas W. Fischer*
 Douglas W. Fischer, County Highway Engineer
 License No. 20235

Date JANUARY 25, 2012



GRAPHIC SCALE



CONVENTIONAL SYMBOLS

- Section Line -----
- Quarter Line -----
- Quarter-Quarter Line } -----
- Property Line -----
- Plat Boundary Line -----
- Existing R/W Line -----
- R/W Parcel Number 1 -----
- Temporary Easement -----
- Permanent Easement -----
- Right-of-Way Monument -----

M Denotes Right-of-Way Corner as shown on MINNESOTA DEPARTMENT OF TRANSPORTATION MONUMENTATION PLAT NO. 02-M30 or MINNESOTA DEPARTMENT OF TRANSPORTATION MONUMENTATION PLAT NO. 02-M31

NOTE

All parcels shown on this plat may not be purchased by Anoka County. Check pertinent documents for each parcel.

2027369.001

Office of RECORDER/REGISTRAR

OF TITLES

STATE OF MINNESOTA COUNTY OF ANOKA

I hereby certify that the within instrument was filed in

this office for record on the 26 day of

JANUARY 2012 at 9:44 o'clock AM

and was duly recorded in Book 4 CORW

3 page

Larry W. Dalziel
 Recorder/Registrar of Titles

By MEW

Deputy

DATA CONTAINED WITHIN THIS BOX FOR INSTRUCTIVE AND INFORMAL PURPOSES ONLY

RIGHT-OF-WAY IN SECTIONS 5 AND 8, TOWNSHIP 33, RANGE 23

PARCEL	OWNER	LOCATION: BY PARCEL IDENT. NUMBER (PIN)	DEED RECORD DOCUMENT NO. OR BOOK, PAGE	TORRENS CERTIFICATE NUMBER	ENTIRE TRACT ACRES / SQUARE FEET	EXISTING RIGHT OF WAY ACRES / SQUARE FEET	NEW HWY. OF WAY ACRES / SQUARE FEET	PERMANENT EASEMENT ACRES / SQUARE FEET	TEMPORARY EASEMENT ACRES / SQUARE FEET	TEMPORARY EASEMENT EXPIRES DATE	BALANCE OF TRACT REMAINING ACRES / SQUARE FEET
1 & 1TE	WEST BETHEL UNITED METHODIST CHURCH	053323340002	325526		3.9645	0.3063		0.0358	1550	12/31/13	3.6582
2, 2PE, 2TE-1 & 2TE-2	WEST BETHEL UNITED METHODIST CHURCH	053323340004	1898586		6.0834	0.1999	0.0026	0.0103	0.0436	12/31/13	5.8809
3 & 3TE	ESTATE OF MABEL L. BARTH	053323340005	129823		284992	8708	112	450	1899	12/31/13	256172
4, 4PE-1, 4PE-2, 4TE-1 & 4TE-2	RICHARD W. KABLE	053323430001	1229827		24.4784	0.1436	0.0477		0.1022	12/31/13	24.2881
5, 5A, 5PE, 5TE-1 & 5TE-2	GENEVIEVE SYLVESTER FAMILY LIMITED PARTNERSHIP	083323120006	2015060.003		1066324	6255	2079		445.3	12/31/13	1057990
6	NOT USED				26.0410	0.1938		0.0103	0.0532	12/31/13	25.8472
7, 7PE, 7TE-1 & 7TE-2	STETSON PROPERTIES, LLC	083323210002	2005150.010		1134344	8442		450	2318	12/31/13	1125902
8, 8PE, 8TE-1 & 8TE-2	RICHARD L. & KAREN C. ATKINS	083323210003	377896		8.4633	0.2621		0.0103	0.0373	12/31/13	8.2012
					368663	11418		450	1625		357245
					10.0892	0.5421		0.0138	0.0172	12/31/13	9.5471
					439486	23614		600	750		415872