

# REVISED ANOKA COUNTY HIGHWAY RIGHT-OF-WAY PLAT NO. 85

County Highway Project No. S.P. 02-607-19

### PROCEDURAL STATEMENTS

- The methods and equipment used in the control surveys for this plat and the checks made on monument locations were accomplished with electronic distance measuring devices or global positioning systems.
- Parcel areas and entire tract areas shown hereon are computed from legal descriptions and not from actual surveys.
- Certificates of location are on file in the Office of the County Surveyor for the section corner monuments shown on this plat.
- For the details of the control survey and land survey, contact the County Surveyor's Office for the survey of Revised Anoka County Highway R/W Plat No. 85, County Highway Project No. S.P. 02-607-19.
- Bearings shown are based on Anoka County Project Coordinate System, NAD83 (1996 Adjustment).

I hereby certify that this plat is a true and correct representation of the boundaries as shown, and that said plat was made under my direct supervision, that all distances are correctly shown in feet and hundredths of a foot, that the monuments for the guidance of future surveys will be correctly placed in the ground as shown after the completion of construction, and that there are no public highways to be designated on said plat other than as shown thereon.

Larry D. Holm by *Charles F. Lutjen, Deputy*  
 Larry D. Holm, Anoka County Surveyor  
 License No. 18165

Date *Feb. 29*, 2012

The Board of County Commissioners for Anoka County, Minnesota, pursuant to Board Resolution Number 2011-28, dated March 10, 2011, is hereby designating the definite location of the right-of-way of County State Aid Highway No. 7 (7th Avenue) from 200 feet south of Monroe Street to School Street and County State Aid Highway No. 14 (Main Street) from 8th Avenue to 6th Avenue. This plat, effected by the County of Anoka, Department of Highways, is hereby certified to be the official plat of that portion of said County State Aid Highway No. 7 and County State Aid Highway No. 14, located in Sections 6 and 7, Township 31, Range 24, Anoka County, Minnesota, as shown on this plat, pursuant to Minnesota Statutes 160.085.

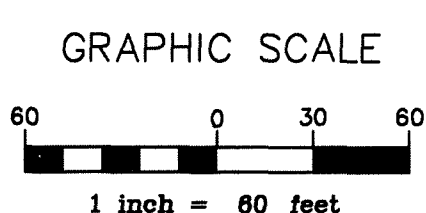
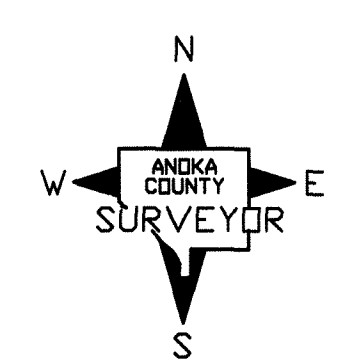
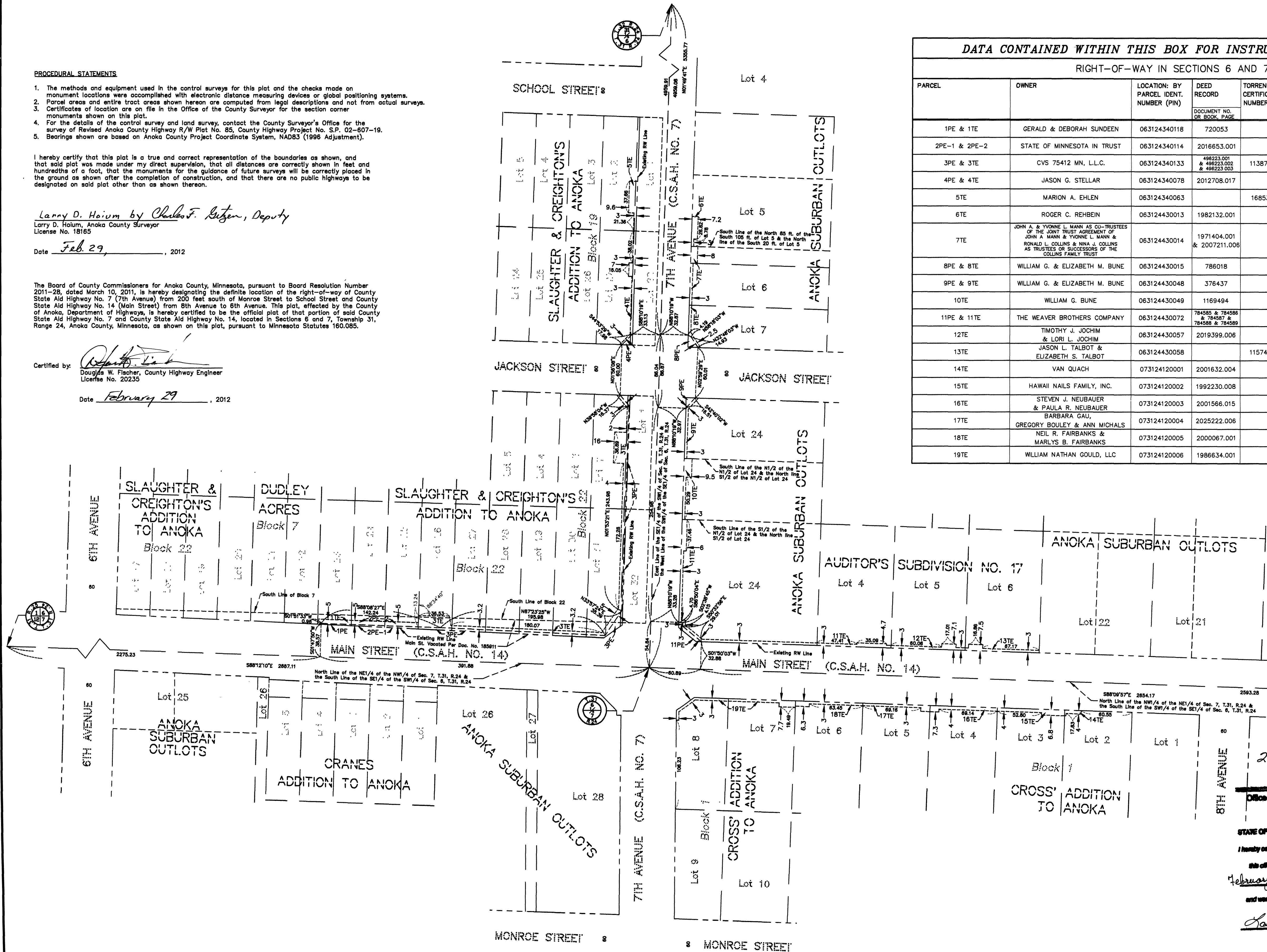
Certified by: *Douglas W. Flacher*  
 Douglas W. Flacher, County Highway Engineer  
 License No. 20235

Date *February 29*, 2012

### DATA CONTAINED WITHIN THIS BOX FOR INSTRUCTIVE AND INFORMAL PURPOSES ONLY

RIGHT-OF-WAY IN SECTIONS 6 AND 7, TOWNSHIP 31, RANGE 24

PARCEL	OWNER	LOCATION: BY PARCEL IDENT. NUMBER (PIN)	DEED RECORD DOCUMENT NO. OR BOOK, PAGE	TORRENS CERTIFICATE NUMBER	ENTIRE TRACT ACRES / SQUARE FEET	EXISTING RIGHT OF WAY ACRES / SQUARE FEET	NEW HWY. RIGHT OF WAY ACRES / SQUARE FEET	PERMANENT EASEMENT ACRES / SQUARE FEET	TEMPORARY EASEMENT ACRES / SQUARE FEET	TEMPORARY EASEMENT EXPIRES DATE	BALANCE OF TRACT REMAINING ACRES / SQUARE FEET
1PE & 1TE	GERALD & DEBORAH SUNDEEN	063124340118	720053					0.0010	0.0047	12/31/13	
2PE-1 & 2PE-2	STATE OF MINNESOTA IN TRUST	063124340114	2016653.001					0.0128	0.204		
3PE & 3TE	CVS 75412 MN, L.L.C.	063124340133	498223.001 & 498223.002 & 498223.003	113870				0.0266	0.0615	12/31/13	
4PE & 4TE	JASON G. STELLAR	063124340078	2012708.017					0.0019	0.0107	12/31/13	
5TE	MARION A. EHLEN	063124340063		16853				0.0098	0.426	12/31/13	
6TE	ROGER C. REHBEIN	063124430013	1982132.001					0.0050	0.219	12/31/13	
7TE	JOHN A. & YVONNE L. MANN AS CO-TRUSTEES OF THE JOINT TRUST AGREEMENT OF JOHN A. MANN & YVONNE L. MANN & RONALD L. COLLINS & NINA J. COLLINS AS TRUSTEES OF SUCCESSORS OF THE COLLINS FAMILY TRUST	063124430014	1971404.001 & 2007211.006					0.0071	0.310	12/31/13	
8PE & 8TE	WILLIAM G. & ELIZABETH M. BUNE	063124430015	786018					0.0023	0.0036	12/31/13	
9PE & 9TE	WILLIAM G. & ELIZABETH M. BUNE	063124430048	376437					0.0016	0.0053	12/31/13	
10TE	WILLIAM G. BUNE	063124430049	1169494					0.0083	0.361	12/31/13	
11PE & 11TE	THE WEAVER BROTHERS COMPANY	063124430072	784585 & 784586 & 784587 & 784588 & 784589					0.0031	0.0304	12/31/13	
12TE	TIMOTHY J. JOCHIM & LORI L. JOCHIM	063124430057	2019399.006					0.0077	0.334	12/31/13	
13TE	JASON L. TALBOT & ELIZABETH S. TALBOT	063124430058		115743				0.0078	0.340	12/31/13	
14TE	VAN QUACH	073124120001	2001632.004					0.0019	0.83	12/31/13	
15TE	HAWAII NAILS FAMILY, INC.	073124120002	1992230.008					0.0091	0.397	12/31/13	
16TE	STEVEN J. NEUBAUER & PAULA R. NEUBAUER	073124120003	2001566.015					0.0082	0.356	12/31/13	
17TE	GREGORY BOULEY & ANN MICHALS	073124120004	2025222.006					0.0066	0.287	12/31/13	
18TE	NEIL R. FAIRBANKS & MARLYN B. FAIRBANKS	073124120005	2000067.001					0.0068	0.295	12/31/13	
19TE	WILLIAM NATHAN GOULD, LLC	073124120006	1986634.001					0.0128	0.559	12/31/13	



### CONVENTIONAL SYMBOLS

- Section Line -----
- Quarter Line -----
- Quarter Quarter Line } -----
- Property Line -----
- Existing R/W Line -----
- R/W Parcel Number -----
- Temporary Easement -----
- Permanent Easement -----

2028778.001  
 507414.001  
 Office of RECORDER/REGISTRAR  
 OF TITLES

STATE OF MINNESOTA COUNTY OF ANOKA  
 I hereby certify that the within instrument was filed in  
 this office for record on the 29 day of  
*February*, 2012 at 4:02 o'clock P.M.  
 and was duly recorded in book 4CORW page  
5

*Harry W. Dalies*  
 Registrar/Registrar of Titles

By JMD  
 Deputy

**NOTE**  
 All parcels shown on this plat may not be purchased by Anoka County. Check pertinent documents for each parcel.