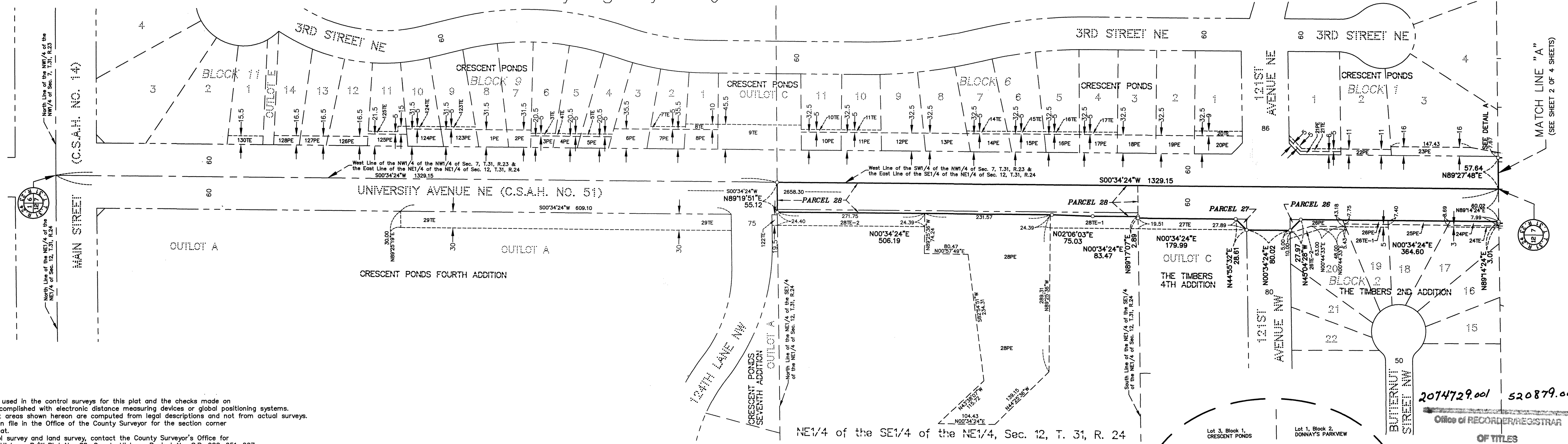


# ANOKA COUNTY HIGHWAY RIGHT-OF-WAY PLAT NO. 88

County Highway Project No. S.P. 002-651-007



### PROCEDURAL STATEMENTS

- The methods and equipment used in the control surveys for this plat and the checks made on monument locations were accomplished with electronic distance measuring devices or global positioning systems.
- Parcel areas and entire tract areas shown hereon are computed from legal descriptions and not from actual surveys.
- Certificates of location are on file in the Office of the County Surveyor for the section corner monuments shown on this plat.
- For the details of the control survey and land survey, contact the County Surveyor's Office for the survey of Anoka County Highway R/W Plat No. 88, County Highway Project No. S.P. 002-651-007.
- Bearings shown are based on Anoka County Project Coordinate System, NAD83 (1986 Adjustment).

I hereby certify that this plat is a true and correct representation of the boundaries as shown, and that said plat was made under my direct supervision, that all distances are correctly shown in feet and hundredths of a foot, that the monuments for the guidance of future surveys will be correctly placed in the ground as shown after the completion of construction, and that there are no public highways to be designated on said plat other than as shown thereon.

*Larry D. Heuser*  
 Larry D. Heuser, Anoka County Surveyor  
 License No. 18165

Date DECEMBER 13, 2013

The Board of County Commissioners for Anoka County, Minnesota, pursuant to Board Resolution Number 2012-97, dated July 24, 2012, is hereby designating the definite location of the right-of-way of County State Aid Highway No. 51 (University Avenue) between 382 feet north of 109th Avenue NE and 307 feet south of County State Aid Highway No. 14 (Main Street) in the Cities of Coon Rapids and Blaine. This plat, effected by the County of Anoka, Department of Highways, is hereby certified to be the official plat of that portion of said County State Aid Highway No. 51 (University Avenue), located in Sections 7 and 18, Township 31, Range 23 and in Sections 12 and 13, Township 31, Range 24, Anoka County, Minnesota, as shown on this plat, pursuant to Minnesota Statutes 160.085.

Certified by: *Georgiy W. Fischer*  
 Georgiy W. Fischer, County Highway Engineer  
 License No. 20235

Date December 16, 2013

2074729.001 520879.001

Office of RECORDER/REGISTRAR  
 OF TITLES  
 STATE OF MINNESOTA COUNTY OF ANOKA

I hereby certify that the within instrument was filed in this office for record on the 16 day of December 13 at 10:30 o'clock A.M.

and was duly recorded in book 4020 page 9

*Jonell M. Sawyer*  
 Registrar of Titles

*JKC*  
 Deputy

**DETAIL A**  
 (NO SCALE)

Lot 3, Block 1, CRESCENT PONDS  
 Lot 1, Block 2, DONNAY'S PARKVIEW

DATA CONTAINED WITHIN THIS BOX FOR INSTRUCTIVE AND INFORMAL PURPOSES ONLY											
RIGHT-OF-WAY IN SECTIONS 7 AND 18, TOWNSHIP 31, RANGE 23 & SECTIONS 12 AND 13, TOWNSHIP 31, RANGE 24											
PARCEL	OWNER	LOCATION: BY PARCEL IDENT. NUMBER (PIN)	DEED RECORD OR BOOK, PAGE	TORRENS CERTIFICATE NUMBER	ENTIRE TRACT ACRES / SQUARE FEET	EXISTING RIGHT OF WAY ACRES / SQUARE FEET	NEW HWY. RIGHT OF WAY ACRES / SQUARE FEET	PERMANENT EASEMENT ACRES / SQUARE FEET	TEMPORARY EASEMENT ACRES / SQUARE FEET	TEMPORARY EASEMENT EXPIRES DATE	BALANCE OF TRACT REMAINING ACRES / SQUARE FEET
1PE	AL F. & MARSHETTE K. FOSTER	073123220020	1998298.001		0.2560	11152	0.0405				0.2560
2PE	BRANDON M. KAPPEL & VALERIYA I. PUSHKAREVA	073123220019	2066594.011		0.2375	10344	0.0309				0.2375
3PE & 3TE	CHRISTOPHER L. & KIEREN M. STEINHOFF	073123220018	2001033.010		0.2390	10413	0.0200	0.0051		12/31/15	0.2390
4PE & 4TE	UMA P. TAMAISAR	073123220017	1998599.006		0.2335	10170	0.0216	0.0055		12/31/15	0.2335
5PE & 5TE	HUONG N. PHAM & THUY N. PHAM	073123220016	1994738.007		0.2194	943	0.0271	0.0066		12/31/15	0.2194
6PE	SARDAR A. KHAN & AKIFA KHATOON	073123220015	1991108.018		0.2180	9494	0.0562				0.2180
7PE & 7TE	WESLEY & TIFFANY HOSKINS	073123220014	203960.022		0.2002	8720	0.0543	0.0074		12/31/15	0.2002
8PE & 8TE	TYLER & ELISE KINSEL	073123220013	2036881.009		0.1870	8147	0.0498	0.0137		12/31/15	0.1870
9TE	CITY OF BLAINE	073123220056	2007623.001		0.4907	21377		0.1603		12/31/15	0.4907
10PE & 10TE	JENNIFER MATTESON	073123230137	2023374.007		0.2393	10425	0.0549	0.0085		12/31/15	0.2393
11PE & 11TE	ROY L. & TANAIAH S. MITCHELL	073123230136	2019649.009		0.2330	10149	0.0552	0.0084		12/31/15	0.2330
12PE	ASIM FAYYAZ	073123230135	2018918.008		0.2463	10730	0.0596				0.2463
13PE	CUONG Q. PHAN & THAO P. DO	073123230134	2015818.016		0.2632	11464	0.0607				0.2632
14PE & 14TE	LARRY E. & JILLIAN M. STOVER	073123230133	2012691.012		0.2775	12090	0.0566	0.0087		12/31/15	0.2775
15PE & 15TE	KONG XIONG & THOMPSON XIONG	073123230132	2012691.008		0.2972	12947	0.0484	0.0077		12/31/15	0.2972
16PE & 16TE	CHERYL L. MATUSOVIC & PHOUTHONE A. SINOUTHASY	073123230131	2016360.009		0.3090	13397	0.0520	0.0080		12/31/15	0.3090
17PE & 17TE	BETEHEM S. TESFATSION & DAWIT W. ASFAW	073123230130	1989933.004		0.3097	13462	0.0530			12/31/15	0.3097
18PE	RICKY K. & SAMANTHA N. CHENG	073123230129	2018812.023		0.3097	13490	0.0530				0.3097
19PE	SMAIL SAIL & HANAN SAIL	073123230128	2020697.007		0.3097	13490	0.0530				0.3097

DATA CONTAINED WITHIN THIS BOX FOR INSTRUCTIVE AND INFORMAL PURPOSES ONLY												
RIGHT-OF-WAY IN SECTIONS 7 AND 18, TOWNSHIP 31, RANGE 23 & SECTIONS 12 AND 13, TOWNSHIP 31, RANGE 24												
PARCEL	OWNER	LOCATION: BY PARCEL IDENT. NUMBER (PIN)	DEED RECORD OR BOOK, PAGE	TORRENS CERTIFICATE NUMBER	ENTIRE TRACT ACRES / SQUARE FEET	EXISTING RIGHT OF WAY ACRES / SQUARE FEET	NEW HWY. RIGHT OF WAY ACRES / SQUARE FEET	PERMANENT EASEMENT ACRES / SQUARE FEET	TEMPORARY EASEMENT ACRES / SQUARE FEET	TEMPORARY EASEMENT EXPIRES DATE	BALANCE OF TRACT REMAINING ACRES / SQUARE FEET	
20PE & 20TE	THOMAS JOHNSON & RUSS-EM JOHNSON	073123230127	2034256.011		0.3735	16271		0.0614	0.0182		12/31/15	0.3735
21PE & 21TE	CHUKWUMA NNOLIM	073123230081	2044559.001		0.4113	17916		0.0137	0.0121		12/31/15	0.4113
22PE	FAISAL J. SIDDIQUI & ABEHA SYED	073123230082	2046941.001		0.3513	15303		0.0234				0.3513
23PE	CHU LY & MERRY YANG	073123230083	2040736.007		0.6650	28966		0.0676				0.6650
24PE & 24TE	MICHELLE M. WALLACE	123124140034	1353807		0.2928	12756		0.0164	0.0065		12/31/15	0.2928
25PE	LYLE E. PATCHEN (OWNER) DAVID J. LOGAN (CONT. PURCHASER)	123124140035	1564640 (2006690.001 - CONT. FOR DEED)		0.2502	10898		0.0195				0.2502
26, 26PE, 26TE-1 & 26TE-2	JACOB TAYLOR & AMY SORENSON	123124140115	2063567.002		0.5953	25930		0.0046	0.0424	0.0268	12/31/15	0.5907
27 & 27TE	JBS PROPERTIES, LLC	123124140107	2038191.010		1.3014	56690		0.0046	0.0849		12/31/15	1.2968
28, 28PE, 28TE-1 & 28TE-2	CITY OF COON RAPIDS	123124140003			10.1919	443960	0.7629	0.0835	1.3071	0.2369	12/31/15	9.3455
29TE	FOUNTAINS HOMEOWNERS ASSOCIATION, INC.	123124110021	2013270.001		16.0600	890572	0.0026		0.4195		12/31/15	16.0574
122TE	FOUNTAINS HOMEOWNERS ASSOCIATION, INC.	123124110054	2019967.003		0.4553	19833		0.0045			12/31/15	0.4553
123PE & 123TE	AMIN M. YOUSUF & RANIA A. YOUSUF	073123220021	2019025.015		0.2463	11047		0.0469	0.0074		12/31/15	0.2536
124PE & 124TE	BAITUS GOMEZ & MERINA GOMEZ	073123220022	2019616.001		0.2174	9469		0.0467	0.0073		12/31/15	0.2174
125PE & 125TE	DANIEL N. MCGUIRE & CHRISTINE M. BAEHR	073123220023	2033472.005		0.9659	4969		0.0360	0.0117		12/31/15	0.9659
126PE	CHARLES D. APPEL & JILL E. APPEL	073123220024	2036352.002		0.2285	9659		0.0282				0.2285
127PE	KENNETH STANFORD & VALERIE STANFORD	073123220025	2038011.016		0.2150	9364		0.0191				0.2150
128PE	ANDREW C. GITZEN & MICHELLE A. GITZEN	073123220026	2036443.010		0.2466	10740		0.0181				0.2466
129	NOT USED											
130TE	ALICE ATEM	073123220044	2033208.009		0.2525	10999			0.0233		12/31/15	0.2525

ANOKA COUNTY SURVEYOR

GRAPHIC SCALE  
 100 0 50 100  
 1 inch = 100 feet

CONVENTIONAL SYMBOLS

Section Line  
 Quarter Line  
 Quarter Quarter Line  
 Property Line  
 Plat Boundary Line  
 Existing R/W Line  
 R/W Parcel Number  
 Temporary Easement  
 Permanent Easement  
 Right-of-Way Monument

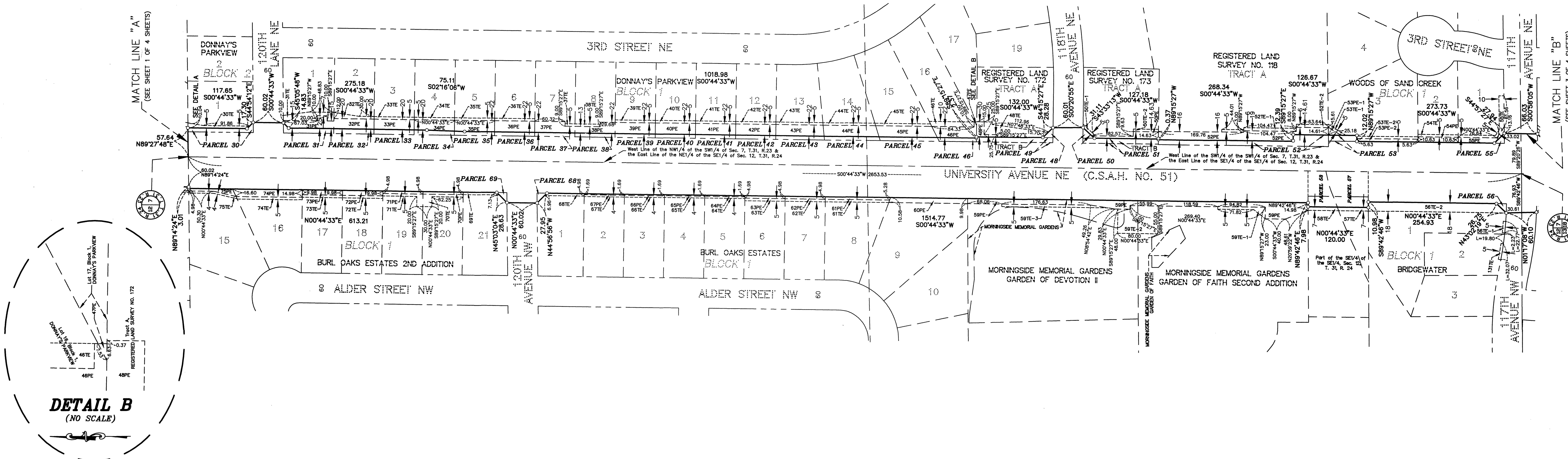
1 2PE  
 2PE

**NOTE**

All parcels shown on this plat may not be purchased by Anoka County. Check pertinent documents for each parcel.

# ANOKA COUNTY HIGHWAY RIGHT-OF-WAY PLAT NO. 88

County Highway Project No. S.P. 002-651-007



**DETAIL B**  
(NO SCALE)

**DATA CONTAINED WITHIN THIS BOX FOR INSTRUCTIVE AND INFORMAL PURPOSES ONLY**

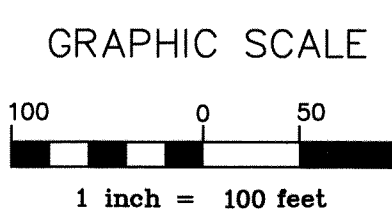
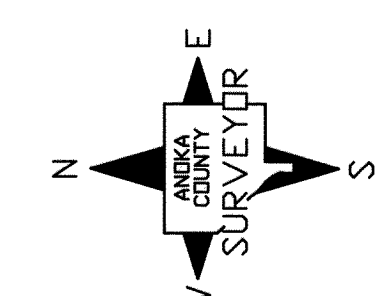
RIGHT-OF-WAY IN SECTIONS 7 AND 18, TOWNSHIP 31, RANGE 23 & SECTIONS 12 AND 13, TOWNSHIP 31, RANGE 24

PARCEL	OWNER	LOCATION: BY PARCEL IDENT. NUMBER (PIN)	DEED RECORD DOCUMENT NO. OR BOOK, PAGE	TORRENS CERTIFICATE NUMBER	ENTIRE TRACT		EXISTING RIGHT OF WAY		NEW HWY. RIGHT OF WAY		PERMANENT EASEMENT	TEMPORARY EASEMENT	TEMPORARY EASEMENT EXPIRES	BALANCE OF TRACT REMAINING
					ACRES / SQUARE FEET	ACRES / SQUARE FEET	ACRES / SQUARE FEET	ACRES / SQUARE FEET	ACRES / SQUARE FEET	ACRES / SQUARE FEET				
30 & 30TE	MARK ANTHONY LAKANEN, JR. & MEGAN ROSE LAKANEN	073123320018		98661	0.3010 13112	0.0245 1069	0.0245 1069	0.0156 679	12/31/15	0.2765 12043				0.2765 12043
31, 31PE & 31TE	GERALD M. & SYLVIA A. KING	073123320004		63634	0.3502 15254	0.0234 1018	0.0379 1652	0.0305 1330	12/31/15	0.3268 14236				0.3268 14236
32, 32PE & 32TE	CHANTEL J. POWERS	073123320005		84955	0.2755 12000	0.0177 770	0.0367 1600	0.0132 575	12/31/15	0.2578 11230				0.2578 11230
33, 33PE & 33TE	BARBARA ANN ANDREWS	073123320006		99245	0.2755 12000	0.0177 770	0.0367 1600	0.0092 400	12/31/15	0.2578 11230				0.2578 11230
34, 34PE & 34TE	ELAINE MARIE BIERINGER	073123320007		50319	0.2755 12000	0.0168 731	0.0376 1640	0.0052 400	12/31/15	0.2587 11269				0.2587 11269
35, 35PE & 35TE	FEDERAL NATIONAL MORTGAGE ASSOCIATION	073123320008	TORRENS DOC. 512133.002	108469	0.2755 12000	0.0141 615	0.0403 1754	0.0092 400	12/31/15	0.2614 11385				0.2614 11385
36, 36PE & 36TE	THOMAS & JUDY REEVES	073123320009		116505	0.2755 12000	0.0140 610	0.0404 1760	0.0092 400	12/31/15	0.2615 11390				0.2615 11390
37, 37PE & 37TE	DONALD D. & LISA R. TETENS	073123320010		62185	0.2755 12000	0.0140 610	0.0363 1583	0.0022 98	12/31/15	0.2615 11390				0.2615 11390
38, 38PE & 38TE	GALLOP SOLUTIONS, INC.	073123320011		112836	0.2755 12000	0.0140 610	0.0300 1307	0.0058 252	12/31/15	0.2615 11390				0.2615 11390
39, 39PE & 39TE	LISA J. YOUNG	073123320012		91808	0.2755 12000	0.0140 610	0.0404 1760	0.0092 400	12/31/15	0.2615 11390				0.2615 11390
40, 40PE & 40TE	DUANE C. & SUSAN K. NEWHAM	073123320013		86743	0.2755 12000	0.0140 610	0.0404 1760	0.0092 400	12/31/15	0.2615 11390				0.2615 11390
41, 41PE & 41TE	GERALD W. & GRACE M. GARNER	073123320014		40272	0.2755 12000	0.0140 610	0.0404 1760	0.0092 400	12/31/15	0.2615 11390				0.2615 11390
42, 42PE & 42TE	ROLAND W. & BEVERLY A. KOENIG	073123320015		121239	0.2755 12000	0.0140 610	0.0404 1760	0.0092 400	12/31/15	0.2615 11390				0.2615 11390
43, 43PE & 43TE	ANDREW WEBER & ASHLEY WEBER	073123320016		123611	0.3069 13370	0.0169 737	0.0480 2090	0.0107 468	12/31/15	0.2900 12633				0.2900 12633
44, 44PE & 44TE	LARRY A. & JULIE A. TRANBERG	073123320017		42170	0.3453 15041	0.0193 841	0.0541 2355	0.0120 521	12/31/15	0.3260 14200				0.3260 14200
45, 45PE & 45TE	JULIE A. WRIGHT	073123330073		103231	0.4216 18365	0.0204 890	0.0575 2503	0.0128 556	12/31/15	0.4012 17475				0.4012 17475
46, 46PE & 46TE	MICHAEL J. JACOBSEN JR. & CAITLIN N. JACOBSEN	073123330074	TORRENS DOC. 498446.004	106757	0.4529 19728	0.0133 580	0.0431 1878	0.0199 869	12/31/15	0.4396 19148				0.4396 19148
47PE	GARY R. DONLAN	073123330075		110777	0.3401 14815	0.0003 13	0.0003 13	0.0003 13	12/31/15	0.3401 14815				0.3401 14815
48, 48PE & 48TE	WILLIAM L. SCHENKEL & ELIZABETH A. SCHENKEL	073123330098		100020	0.4897 21332	0.0046 200	0.0133 579	0.0531 2313	12/31/15	0.4851 21132				0.4851 21132
49	ROBERT H. SCHENKEL, III	073123330099		86795	0.0349 1520	0.0349 1520	0.0349 1520	0.0349 1520		0				0
50, 50PE, 50TE-1 & 50TE-2	WILLIAM L. SCHENKEL & ELIZABETH A. SCHENKEL	073123330096		100021	0.4854 21144	0.0056 242	0.0260 1131	0.0090 394	12/31/15	0.4798 20902				0.4798 20902
51	DANBURY DEVELOPMENT, L.L.C.	073123330097		77890	0.0344 1500	0.0344 1500	0.0344 1500	0.0344 1500		0				0
52, 52PE, 52TE-1 & 52TE-2	ROGER & ELIZABETH ANDA FAMILY PROPERTIES, LLC	073123330088		123649	5.4286 236469	0.0948 4129	0.1276 5560	0.0282 1228	12/31/15	5.3338 232340				5.3338 232340
53, 53PE-1, 53PE-2, 53TE-1 & 53TE-2	CHARLES M. OYUGI	073123330091	2022527.005		0.5467 23816	0.0156 680	0.0203 883	0.0181 788	12/31/15	0.5311 23136				0.5311 23136

**DATA CONTAINED WITHIN THIS BOX FOR INSTRUCTIVE AND INFORMAL PURPOSES ONLY**

RIGHT-OF-WAY IN SECTIONS 7 AND 18, TOWNSHIP 31, RANGE 23 & SECTIONS 12 AND 13, TOWNSHIP 31, RANGE 24

PARCEL	OWNER	LOCATION: BY PARCEL IDENT. NUMBER (PIN)	DEED RECORD DOCUMENT NO. OR BOOK, PAGE	TORRENS CERTIFICATE NUMBER	ENTIRE TRACT		EXISTING RIGHT OF WAY		NEW HWY. RIGHT OF WAY		PERMANENT EASEMENT	TEMPORARY EASEMENT	TEMPORARY EASEMENT EXPIRES	BALANCE OF TRACT REMAINING
					ACRES / SQUARE FEET	ACRES / SQUARE FEET	ACRES / SQUARE FEET	ACRES / SQUARE FEET	ACRES / SQUARE FEET	ACRES / SQUARE FEET				
54PE & 54TE	PRASHANT RAWAT & ZHUO FU	073123330090	1709263		0.2600 11326	0.0195 851	0.0092 400	12/31/15	0.2600 11326					0.2600 11326
55, 55PE & 55TE	DANIEL NELSON	073123330089	1902566		0.3248 14148	0.0046 200	0.0217 944	0.0258 1123	12/31/15	0.3202 13948				0.3202 13948
56, 56TE-1 & 56TE-2	LINDA REGLIN	123124440032	2010666.010		0.6549 28527	0.0042 181	0.0118 4870	12/31/15	0.6507 28346					0.6507 28346
57 & 57TE	SHAMROCK DEVELOPMENT, INC.	123124440031	994803 & 994804		0.2274 9907	0.0896 3905	0.0317 1380	0.0097 423	12/31/15	0.1061 4622				0.1061 4622
58 & 58TE	MMG ACQUISITION, INC.	123124440009	1201633		0.6714 24889	0.0481 2095	0.0261 1138	0.0096 417	12/31/15	0.4872 21656				0.4872 21656
59PE, 59TE-1, 59TE-2, 59TE-3	MMG ACQUISITION, INC.	123124440030	1201633		11.7313 511015	0.1996 8696	0.1351 5883	12/31/15	11.7313 511015					11.7313 511015
60PE	GARY L. KEYZERS & JENNIFER S. KEYZERS	123124440021	1102458		0.5955 25939	0.0356 1549	0.0146 634	12/31/15	0.5955 25939					0.5955 25939
61PE & 61TE	MARCUS E. JONES & SHARON M. JONES	123124410044	1207705		0.3834 16703	0.0147 642	0.0146 635	12/31/15	0.3834 16703					0.3834 16703
62PE & 62TE	KENNETH J. MANTHIS & NANCY J. MANTHIS	123124410043	1108965		0.3030 13200	0.0091 398	0.0092 400	12/31/15	0.3030 13200					0.3030 13200
63PE & 63TE	KORY L. JORGENSEN	123124410042	2024990.002		0.3030 13200	0.0091 398	0.0092 400	12/31/15	0.3030 13200					0.3030 13200
64PE & 64TE	JOSEPH NOVATNEY & LAURA NOVATNEY	123124410041	2037724.010		0.3030 13200	0.0031 135	0.0073 320	12/31/15	0.3030 13200					0.3030 13200
65PE & 65TE	MARION L. BLACK	123124410040	1573719		0.3030 13200	0.0031 135	0.0073 320	12/31/15	0.3030 13200					0.3030 13200
66PE & 66TE	DEBORAH A. GUNTER	123124410039	1502669		0.3030 13200	0.0031 135	0.0073 320	12/31/15	0.3030 13200					0.3030 13200
67PE & 67TE	MEGBEY N. GHEBRE	123124410038	2006039.003		0.3030 13200	0.0031 135	0.0073 320	12/31/15	0.3030 13200					0.3030 13200
68 & 68TE	GENE C. SMITH & CAROL F. SMITH	123124410037	1123827		0.3484 15178	0.0046 200	0.0087 380	12/31/15	0.3438 14978					0.3438 14978
69 & 69TE	MICHAEL DAVID & LISA ANNETTE YAHN	123124410094	1942509		0.3366 14661	0.0046 200	0.0079 346	12/31/15	0.3320 14461					0.3320 14461
70PE & 70TE	BLAKE J. HERMAN & LYNETTE C. HERMAN	123124410093	1329930		0.3030 13200	0.0091 398	0.0173 755	12/31/15	0.3030 13200					0.3030 13200
71PE & 71TE	ROBERT J. SMITH & REBECCA J. SMITH AS TRUSTEES OF THE REVOCABLE TRUST AGREEMENT OF ROBERT J. SMITH & REBECCA J. SMITH	123124410092	2005657.001		0.3030 13200	0.0091 398	0.0148 645	12/31/15	0.3030 13200					0.3030 13200
72PE & 72TE	ROBERT H. WADE	123124410091	2037394.001		0.3030 13200	0.0183 798	0.0092 400	12/31/15	0.3030 13200					0.3030 13200
73PE & 73TE	JEROME A. HANSON & JANET J. HANSON	123124410090	1040852		0.3030 13200	0.0183 799	0.0092 400	12/31/15	0.3030 13200					0.3030 13200
74PE & 74TE	ROBERT H. MOORE & GWEN A. MOORE	123124410089	1976317.010		0.3660 15943	0.0466 2031	0.0150 654	12/31/15	0.3660 15943					0.3660 15943
75PE & 75TE	SCOTT A. VEE & LYNN M. VEE	123124410088	1111742		0.4983 21708	0.0146 636	0.0089 386	12/31/15	0.4983 21708					0.4983 21708
131TE	DAVID M. SCHNEIDER & MEGAN M. RINERSON	123124440033	2010814.008		0.2947 12835	0.0037 160	12/31/15	0.2947 12835						0.2947 12835



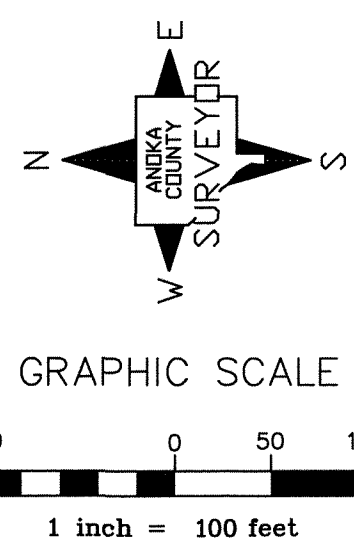
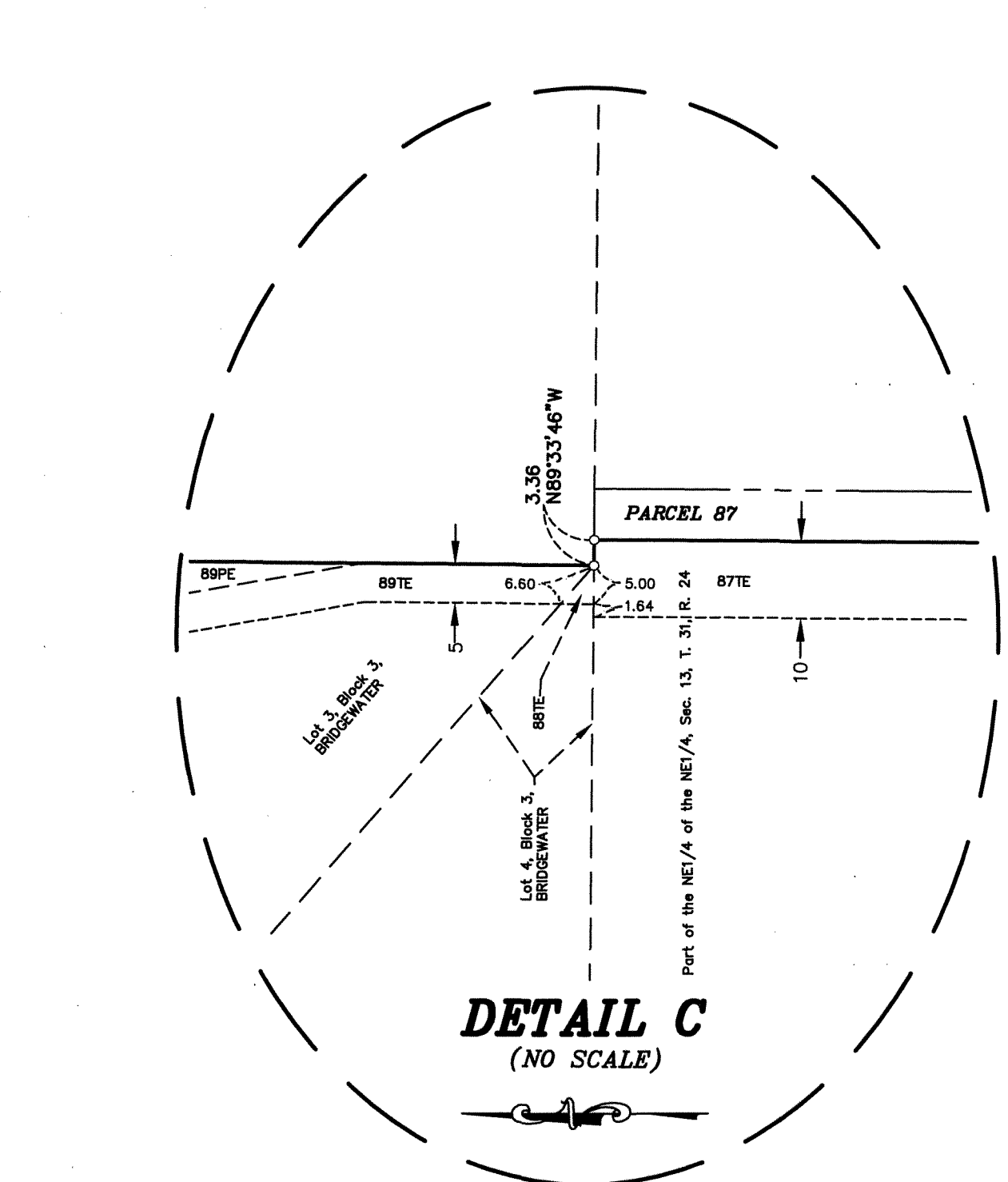
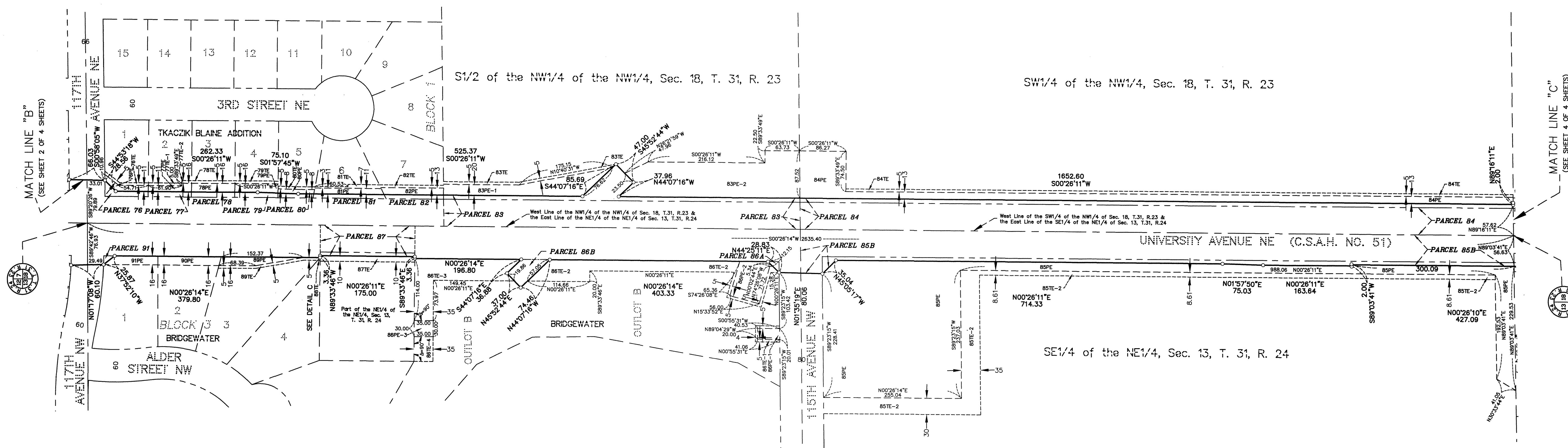
**CONVENTIONAL SYMBOLS**

Section Line	---
Quarter Line	----
Quarter Quarter Line	-----
Property Line	-----
Plat Boundary Line	-----
Existing R/W Line	-----
R/W Parcel Number	1
Temporary Easement	---
Permanent Easement	---
Right-of-Way Monument	---

**NOTE**  
All parcels shown on this plat may not be purchased by Anoka County. Check pertinent documents for each parcel.

# ANOKA COUNTY HIGHWAY RIGHT-OF-WAY PLAT NO. 88

County Highway Project No. S.P. 002-651-007



**CONVENTIONAL SYMBOLS**

- Section Line
- Quarter Line
- Quarter Quarter Line
- Property Line
- Plat Boundary Line
- Existing R/W Line
- R/V Parcel Number
- Temporary Easement
- Permanent Easement
- Right-of-Way Monument

**NOTE**  
All parcels shown on this plat may not be purchased by Anoka County. Check pertinent documents for each parcel.

**DATA CONTAINED WITHIN THIS BOX FOR INSTRUCTIVE AND INFORMAL PURPOSES ONLY**

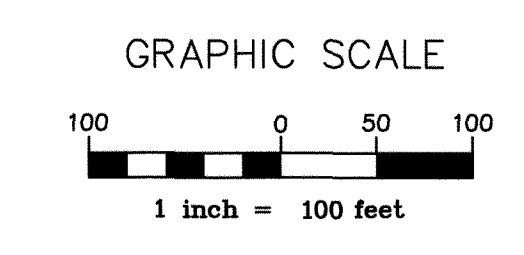
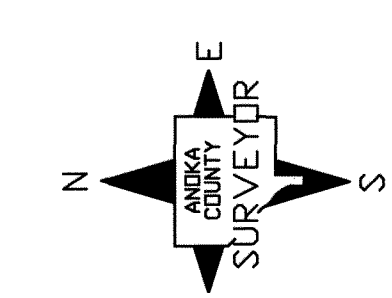
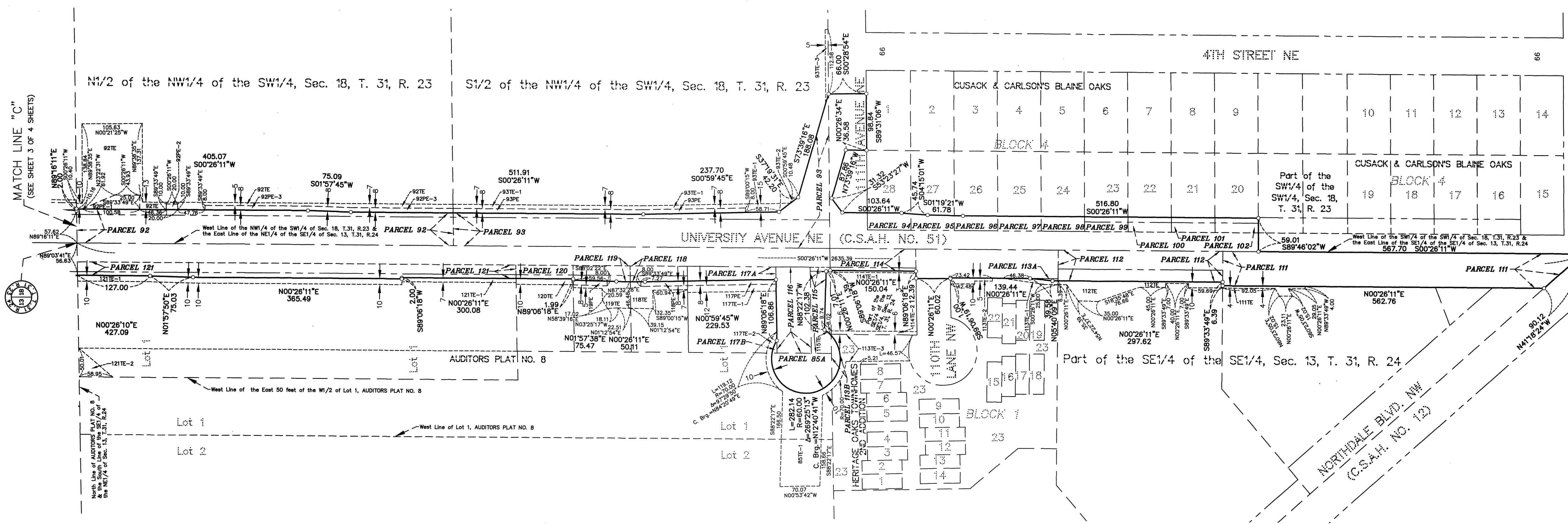
RIGHT-OF-WAY IN SECTIONS 7 AND 18, TOWNSHIP 31, RANGE 23 & SECTIONS 12 AND 13, TOWNSHIP 31, RANGE 24

PARCEL	OWNER	LOCATION: BY PARCEL IDENT. NUMBER (PIN)	DEED RECORD OR BOOK, PAGE	TORRENS CERTIFICATE NUMBER	ENTIRE TRACT	EXISTING RIGHT OF WAY	NEW HWY. RIGHT OF WAY	PERMANENT EASEMENT	TEMPORARY EASEMENT	TEMPORARY EASEMENT EXPIRES	BALANCE OF TRACT REMAINING
					ACRES / SQUARE FEET	ACRES / SQUARE FEET	ACRES / SQUARE FEET	ACRES / SQUARE FEET	ACRES / SQUARE FEET	DATE	ACRES / SQUARE FEET
76, 76PE & 76TE	JUDE ANYANWU	183123220033	2025602.004		0.2639		0.0221	0.0214	0.0101	12/31/15	0.2418
77, 77PE, 77TE-1 & 77TE-2	RAYMOND F. FINN & JANICE J. FINN	183123220034	738139		11497		964	934	435		10533
78, 78PE & 78TE	JASON WEIMER & JENNIFER WEIMER	183123220035	1995371.009		0.2602		0.0176	0.0223	0.0092	12/31/15	0.2426
79, 79PE & 79TE	SCOTT A. RICHART & GERRI K. RICHART	183123220036	698966		11335		766	971	400		10569
80, 80PE & 80TE	KEITH D. BALLSTADT	183123220037	734838		0.2602		0.0176	0.0294	0.0092	12/31/15	0.2426
81, 81PE & 81TE	NICKY LEE BUFF & KATHERINE MARY BUFF	183123220038	2002576.006		11333		766	1280	400		10567
82, 82PE & 82TE	DOUGLAS G. ARMSTRONG & DIANE C. ARMSTRONG	183123220039	944812		0.2601		0.0171	0.0298	0.0092	12/31/15	0.2430
83, 83PE-1, 83PE-2 & 83TE	PFS, MHC, LLC & PFS EXCHANGE, LLC	183123220001	2001825.005		11330		747	1299	400		10583
84, 84PE & 84TE	PFS, MHC, LLC & PFS EXCHANGE, LLC	183123230001	2001825.005		0.2400		0.0118	0.0123	0.0078	12/31/15	0.2282
85A, 85B, 85PE, 85TE-1 & 85TE-2	ANOKA-HENNEPIN INDEPENDENT SCHOOL DISTRICT # 11	133124140007	336197		10455		516	535	340		9939
86A, 86B, 86PE-1, 86PE-2, 86PE-3, 86TE-1, 86TE-2, 86TE-3 & 86TE-4	CITY OF COON RAPIDS	133124110082	1431223		0.2468		0.0230	0.0319	0.0138	12/31/15	0.2238
87 & 87TE	ANOKA COUNTY	133124110002	2063793.009		10751		1004	1388	601		9747
88TE	CATHERINE A. OSTAZESKI	133124110009	1122469		0.3798		0.0188	0.0337	0.0135	12/31/15	0.3610
89PE & 89TE	CHARLES J. REICHOW & COURTNEY A. RUBERTO-REICHOW	133124110008	1782751		16544		818	1468	586		15726
90PE	MARK A. JOHNSON & LORI L. JOHNSON	133124110007	1391965		21.4049	0.7562	0.1815	0.6765	0.0365	12/31/15	20.4672
91 & 91PE	CINDY NELSON	133124110006	1995302.003		932399	32942	7904	29470	1592		891553
					42.7829	1.5125	0.2299	0.5395	0.1415		41.0405
					1863625	65884	10015	23502	6164		1787726
					72.7788	1.5414	0.3544	2.0150	0.8669	12/31/15	70.8830
					3170243	67142	15439	87773	37763		3087663
					5.5675		0.0520	0.1365	0.5110	12/31/15	5.5155
					242521		2264	5948	22260		240257
					1.0044	0.2009	0.0267		0.0402	12/31/15	0.7768
					43750	8750	1162		1750		33838
					0.4478				0.0003	12/31/15	0.4478
					19505				11		19505
					0.5433			0.0406	0.0215		0.5433
					23668			1768	935	12/31/15	23668
					0.3647			0.0423			0.3647
					15885			1844			15885
					0.4240			0.0037	0.0332		0.4203
					18468			160	1446		18308

Note: Also see Sheet 4 of 4 Sheets for Parcel 85A & 85TE-1.

# ANOKA COUNTY HIGHWAY RIGHT-OF-WAY PLAT NO. 88

County Highway Project No. S.P. 002-651-007



**DATA CONTAINED WITHIN THIS BOX FOR INSTRUCTIVE AND INFORMAL PURPOSES ONLY**

RIGHT-OF-WAY IN SECTIONS 7 AND 18, TOWNSHIP 31, RANGE 23 & SECTIONS 12 AND 13, TOWNSHIP 31, RANGE 24

PARCEL	OWNER	LOCATION: BY PARCEL IDENT. NUMBER (PIN)	DEED RECORD DOCUMENT NO. OR BOOK, PAGE	TORRENS CERTIFICATE NUMBER	ENTIRE TRACT		EXISTING RIGHT OF WAY		NEW HWY. RIGHT OF WAY		PERMANENT EASEMENT ACRES / SQUARE FEET	TEMPORARY EASEMENT ACRES / SQUARE FEET	TEMPORARY EASEMENT EXPIRES DATE	BALANCE OF TRACT REMAINING ACRES / SQUARE FEET
					ACRES / SQUARE FEET	SQUARE FEET	ACRES / SQUARE FEET	SQUARE FEET	ACRES / SQUARE FEET	SQUARE FEET				
85A, 85B, 85PE, 85TE-1 & 85TE-2	(SEE SHEET 3 OF 4 SHEETS)													
92, 92PE-1, 92PE-2, 92PE-3 & 92TE	PFS, MHC, LLC & PFS EXCHANGE, LLC	183123320001	2001825.005		21.4347	0.7563	0.1354	0.1258	0.4113	12/31/15			20.5430	
93, 93PE, 93TE-1, 93TE-2 & 93TE-3	PFS, MHC, LLC & PFS EXCHANGE, LLC	183123320002	2001825.005		21.4256	0.7563	0.2987	0.0940	0.1211	12/31/15			20.3706	
94	ANOKA COUNTY	183123330125	2060977.001		0.2448	0.0523	1.3013	4.096	5.273				887.343	
95	ANOKA COUNTY	183123330124	2069735.001		0.1662	0.0473	0.2277						8395	
96	EUGENE E. GLISICA	183123330123	1145280		0.2433	0.0454	0.2061						0.1960	
97	ANOKA COUNTY	183123330122	2060419.001		0.1060	0.1978	0.0454						8539	
98	ANOKA COUNTY	183123330121	2068640.001		0.2433	0.0454	1.978						0.1979	
99	ANOKA COUNTY	183123330120	2069981.005		0.1059	0.1292	0.0157						8622	
100	ANOKA COUNTY	183123330119	2068802.003		0.2433	0.0297	0.0157						0.1979	
101	ANOKA COUNTY	183123330118	2063536.001		0.1059	0.1292	0.0157						8620	
102	ANOKA COUNTY	183123330117	2063536.006		0.2433	0.0297	0.0157						0.1979	

**DATA CONTAINED WITHIN THIS BOX FOR INSTRUCTIVE AND INFORMAL PURPOSES ONLY**

RIGHT-OF-WAY IN SECTIONS 7 AND 18, TOWNSHIP 31, RANGE 23 & SECTIONS 12 AND 13, TOWNSHIP 31, RANGE 24

PARCEL	OWNER	LOCATION: BY PARCEL IDENT. NUMBER (PIN)	DEED RECORD DOCUMENT NO. OR BOOK, PAGE	TORRENS CERTIFICATE NUMBER	ENTIRE TRACT		EXISTING RIGHT OF WAY		NEW HWY. RIGHT OF WAY		PERMANENT EASEMENT ACRES / SQUARE FEET	TEMPORARY EASEMENT ACRES / SQUARE FEET	TEMPORARY EASEMENT EXPIRES DATE	BALANCE OF TRACT REMAINING ACRES / SQUARE FEET
					ACRES / SQUARE FEET	SQUARE FEET	ACRES / SQUARE FEET	SQUARE FEET	ACRES / SQUARE FEET	SQUARE FEET				
103 - 110	NOT USED													
111 & 111E	PENNWOOD ACQUISITION, LLC	133124440006	1993124.001		3.4113	0.8214						0.0201	12/31/15	2.5899
112 & 112E	BELIEVERS BIBLE CHAPEL, INC.	133124440008	67839		148598	35782	4.2160	0.2182	0.1363			877	12/31/15	112816
113A, 113B, 113TE-1, 113TE-2 & 113TE-3	HERITAGE OAKS TOWNHOMES ASSOCIATION	133124440113	803503		183648	9504	5936					4550	12/31/15	3.8615
114, 114TE-1 & 114TE-2	CONNEXUS ENERGY	133124440004	372844		69000	951	0.0218					7409	12/31/15	68049
115 & 115E	CONNEXUS ENERGY	133124410007	372844		0.5167	0.1137	0.0193					0.0310	12/31/15	0.3837
116	ANOKA-HENNEPIN INDEPENDENT SCHOOL DISTRICT # 11	133124410006	346107		22506	4951	842					1350	12/31/15	16713
117A, 117B, 117PE, 117TE-1 & 117TE-2	TIMOTHY W. LUNDIN & REBECCA L. LUNDIN	133124410005	1629884		0.1209	0.0056	0.0923					0.0022	12/31/15	0.0230
118, 118PE & 118TE	SARAH K. HARRIS	133124410004	1980303.009		5267	245	4022					98	12/31/15	1000
119, 119PE & 119TE	JEFFREY M. SVITORIS & MARCIE SVITORIS	133124410008	1805147		0.2073		0.2073							0
120 & 120TE	KURT DAVID DESMIDT	133124410009	1662477		9028		9028							0
121, 121TE-1 & 121TE-2	B & B STORAGE, LLC	133124410018	1932553		0.5354	0.0873	0.0285	0.0285	0.0503			0.0503	12/31/15	0.4481

**CONVENTIONAL SYMBOLS**

- Section Line -----
- Quarter Line -----
- Quarter-Quarter Line } -----
- Property Line -----
- Plat Boundary Line -----
- Existing R/W Line -----
- R/W Parcel Number -----
- Temporary Easement -----
- Permanent Easement -----
- Right-of-Way Monument -----

**NOTE**  
All parcels shown on this plat may not be purchased by Anoka County. Check pertinent documents for each parcel.