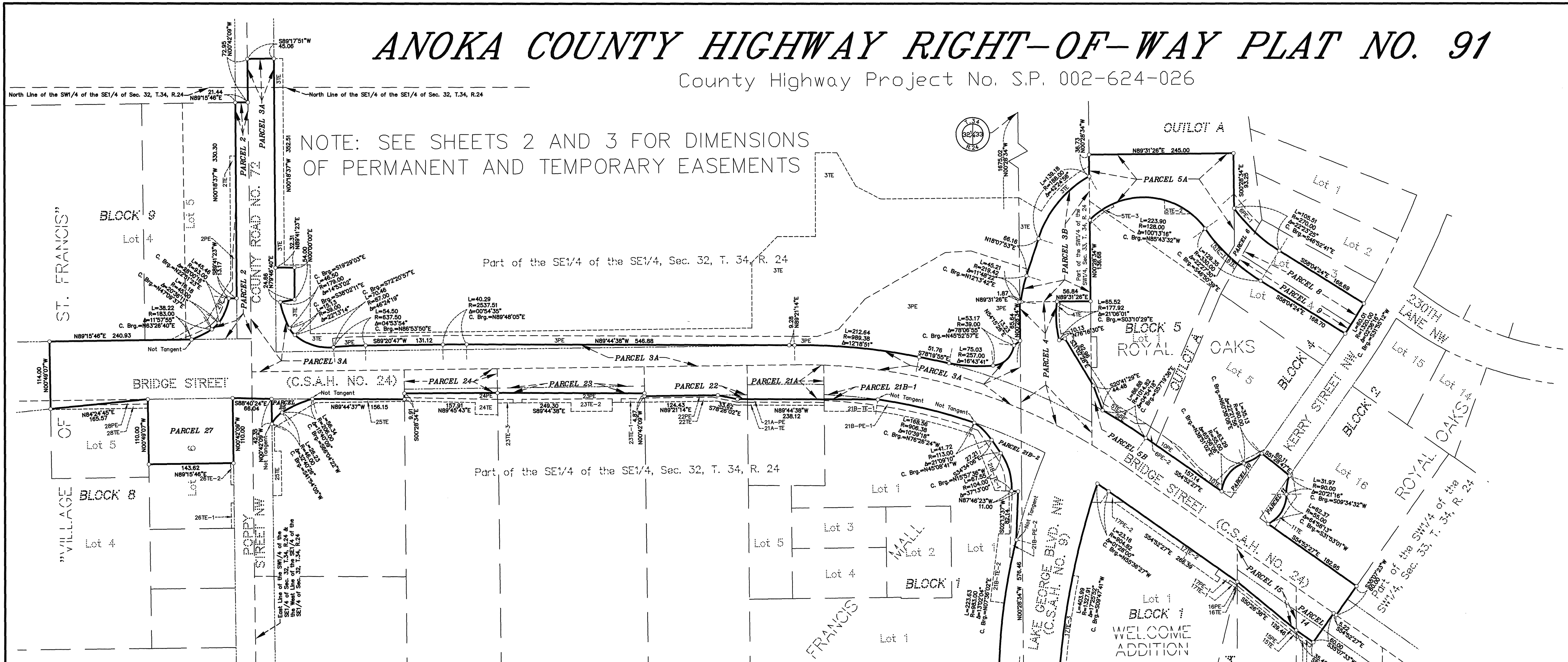
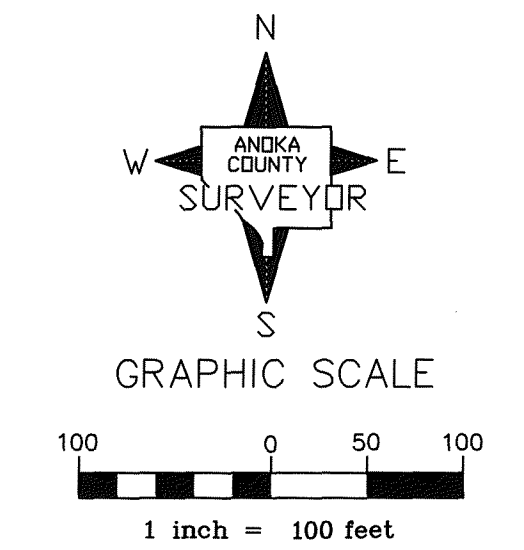


# ANOKA COUNTY HIGHWAY RIGHT-OF-WAY PLAT NO. 91

County Highway Project No. S.P. 002-624-026



NOTE: SEE SHEETS 2 AND 3 FOR DIMENSIONS OF PERMANENT AND TEMPORARY EASEMENTS



**CONVENTIONAL SYMBOLS**

Section Line	---
Quarter Line	---
Quarter Quarter Line	---
Property Line	---
Plat Boundary Line	---
Existing R/W Line	---
R/W Parcel Number	1
Temporary Easement	2TE
Permanent Easement	2PE
Right-of-Way Monument	○

**NOTE**  
All parcels shown on this plat may not be purchased by Anoka County. Check pertinent documents for each parcel.

**DATA CONTAINED WITHIN THIS BOX FOR INSTRUCTIVE AND INFORMAL PURPOSES ONLY**

**RIGHT-OF-WAY IN SECTIONS 32 AND 33, TOWNSHIP 34, RANGE 24**

PARCEL	OWNER	LOCATION: BY PARCEL IDENT. NUMBER (PIN)	DEED RECORD DOCUMENT NO. OR BOOK, PAGE	TORRENS CERTIFICATE NUMBER	ENTIRE TRACT		EXISTING RIGHT OF WAY		NEW HWY. RIGHT OF WAY		PERMANENT EASEMENT		TEMPORARY EASEMENT		TEMPORARY EASEMENT EXPIRES		BALANCE OF TRACT REMAINING	
					ACRES / SQUARE FEET	ACRES / SQUARE FEET	ACRES / SQUARE FEET	ACRES / SQUARE FEET	ACRES / SQUARE FEET	ACRES / SQUARE FEET	ACRES / SQUARE FEET	ACRES / SQUARE FEET	DATE	ACRES / SQUARE FEET	ACRES / SQUARE FEET			
2, 2PE & 2TE	L & J PROPERTIES I, LLC	323424430018	2004323.001		1.6511	0.2088	0.0501	0.0373	0.0680					10/31/16	1.3922		60646	
3A, 3B, 3PE & 3TE	INDEPENDENT SCHOOL DISTRICT NO. 15	323424410003	341699		57.5917	1.4749	0.8506	1.3041	2.1059					10/31/16	55.4662		2416109	
4 & 4TE	CITY OF ST. FRANCIS	333424330048	580423 & 687507		0.5911	0.1021	0.3965		0.0325				10/31/16	0.1325		5770		
5A, 5B, 5PE, 5TE-1, 5TE-2, 5TE-3 & 5TE-4	ROBERT M. O'BRIEN & CAROLYN J. O'BRIEN	333424330060	69295, 128586, 131567, & 1315677		2.0216	4.446	0.5757	0.0303	0.0576				10/31/16	1.4459		62984		
6, 6PE-1, 6PE-2 & 6TE	CITY OF ST. FRANCIS	333424320064	906058		3.6144	0.0428	0.0306	0.0048					10/31/16	3.5716		155580		
8	ANOKA COUNTY	333424330039	2016943.001		0.3788	0.2072									0.1716		7475	
9	ANOKA COUNTY	333424330040	2013382.012		0.3805	0.0947									0.2958		12887	
10, 10PE & 10TE	NORTHERN CAPITAL INVESTMENTS, LLC	333424330041	2026122.013		1.1500	0.0361	0.0289	0.0300					10/31/16	1.1139		48523		
11 & 11TE	NORTHERN CAPITAL INVESTMENTS, LLC	333424330027	2026122.013		1.2535	0.0326	0.0226						10/31/16	1.2209		53182		
14, 14PE & 14TE	IMPERIAL DEVELOPMENT GROUP, LLC	333424330051	127825		54601	1419		986					10/31/16	53182		1.3145		
15, 15PE & 15TE	GERDIN PROPERTIES I, LLC	333424330003	115158		60644	2173	1211	168	151				10/31/16	57260		0.9971		
16PE & 16TE	GERDIN PROPERTIES I, LLC	333424330059	115158		1.1513	0.0925	0.0617	0.0149	0.0149				10/31/16	0.9971		43435		
17PE-1, 17PE-2, 17TE-1, 17TE-2 & 17TE-3	RELIANCE ASSET, LLC	333424330058	118516		50149	4028	2686	647	647				10/31/16	0.1483		6459		
21A, 21A-PE & 21A-TE	JENSEN FAMILY LIMITED PARTNERSHIP	323424440025	1557336		1.9828		0.0289	0.1202					10/31/16	1.9828		86369		
21B-1, 21B-2, 21B-3, 21B-4, 21B-5, 21B-6, 21B-7, 21B-8, 21B-9, 21B-10, 21B-11, 21B-12, 21B-13, 21B-14, 21B-15, 21B-16, 21B-17, 21B-18, 21B-19, 21B-20, 21B-21, 21B-22, 21B-23, 21B-24, 21B-25, 21B-26, 21B-27, 21B-28, 21B-29, 21B-30, 21B-31, 21B-32, 21B-33, 21B-34, 21B-35, 21B-36, 21B-37, 21B-38, 21B-39, 21B-40, 21B-41, 21B-42, 21B-43, 21B-44, 21B-45, 21B-46, 21B-47, 21B-48, 21B-49, 21B-50, 21B-51, 21B-52, 21B-53, 21B-54, 21B-55, 21B-56, 21B-57, 21B-58, 21B-59, 21B-60, 21B-61, 21B-62, 21B-63, 21B-64, 21B-65, 21B-66, 21B-67, 21B-68, 21B-69, 21B-70, 21B-71, 21B-72, 21B-73, 21B-74, 21B-75, 21B-76, 21B-77, 21B-78, 21B-79, 21B-80, 21B-81, 21B-82, 21B-83, 21B-84, 21B-85, 21B-86, 21B-87, 21B-88, 21B-89, 21B-90, 21B-91, 21B-92, 21B-93, 21B-94, 21B-95, 21B-96, 21B-97, 21B-98, 21B-99, 21B-100	JENSEN FAMILY LIMITED PARTNERSHIP	1416600		86369	0.6084	0.0985	0.0753	0.0149	0.0149				10/31/16	0.4346		18931		
21 (TOTAL)	JENSEN FAMILY LIMITED PARTNERSHIP	323424440025 & 1557336			4.3670	0.1017	0.1892							10/31/16	4.2186		183763	
22, 22PE & 22TE	VISION PROPERTIES, INC.	323424440007	79597		190228	6465	4428	8242						10/31/16	4.6532		202594	
23, 23PE, 23TE-1, 23TE-2 & 23TE-3	VISION PROPERTIES, INC.	323424440006	79597		4.9754	0.0985	0.2237	0.1166	0.2041					10/31/16	2.02594		1.9160	
24, 24PE & 24TE	CHESTER E. KOTTKE, JR. & JUDITH L. KOTTKE	323424440001	463115		2.1219	0.2004	0.0055	0.0146	0.0256					10/31/16	1.9160		83459	
25 & 25TE	VILLAGE BANK	323424440022	1023997 & 1441177		92429	8729	241	638	1115					10/31/16	2.7801		12110	
26TE-1 & 26TE-2	JASON R. WILLIAMS & LANETTE J. WILLIAMS	323424430012	1088405		3.0271	0.1888	0.0582	0.0814	0.0543					10/31/16	2.7801		12110	
27	CHARLES J. MEADE	323424430013	111201		1.9166	0.1196	0.0277	0.0326	0.0393					10/31/16	1.7693		77070	
28PE & 28TE	KURT LANCE JOHNSON & PATTI ANN JOHNSON	323424430010	866824		83485	5208	1207	1421	1714					10/31/16	1.7505		76251	
					2.0591	0.2842	0.0244		0.0705					10/31/16	0.3624		15786	
					15786				400					10/31/16	15786		0	
					0.3630	0.3630								10/31/16	0		0	
					15811									10/31/16	0		0	
					0.5000	0.0265		0.0089	0.0214					10/31/16	0.4735		20626	
					21781	1155		389	931					10/31/16	20626			

County Recorder/Registrar of Titles  
County of Anoka, State of Minnesota

I hereby certify that this plat of ANOKA COUNTY HIGHWAY RIGHT-OF-WAY PLAT NO. 91 was filed in the office of the County Recorder/Registrar of Titles for public record on this 8 day of December 20 14 at 11:48 o'clock A.M. and was duly recorded in Book 4 Page 13, as Document Number 2014589701.

*Connel M. Sawyer*  
County Recorder/Registrar of Titles  
By *D. Schultz*, Deputy

County Recorder/Registrar of Titles  
County of Anoka, State of Minnesota

I hereby certify that this plat of ANOKA COUNTY HIGHWAY RIGHT-OF-WAY PLAT NO. 91 was filed in the office of the County Recorder/Registrar of Titles for public record on this 8 day of December 20 14 at 11:48 o'clock A.M. and was duly recorded in Book 4 Page 13, as Document Number 2014589701.

*Connel M. Sawyer*  
County Recorder/Registrar of Titles  
By *D. Schultz*, Deputy

- PROCEDURAL STATEMENTS**
- The methods and equipment used in the control surveys for this plat and the checks made on monument locations were accomplished with electronic distance measuring devices or global positioning systems.
  - Parcel areas and entire tract areas shown hereon are computed from legal descriptions and not from actual surveys.
  - Certificates of location are on file in the Office of the County Surveyor for the section corner monuments shown on this plat.
  - For the details of the control survey and land survey, contact the County Surveyor's Office for the survey of Anoka County Highway R/W Plat No. 91, County Highway Project No. S.P. 002-624-026.
  - Bearings shown are based on Anoka County Project Coordinate System, NAD83 (1996 Adjustment).

I hereby certify that this plat is a true and correct representation of the boundaries as shown, and that said plat was made under my direct supervision, that all distances are correctly shown in feet and hundredths of a foot, that the monuments for the guidance of future surveys will be correctly placed in the ground as shown after the completion of construction, and that there are no public highways to be designated on said plat other than as shown thereon.

*Larry D. Hurn*  
Larry D. Hurn, Anoka County Surveyor  
License No. 18165

Date DECEMBER 8, 2014

The Board of County Commissioners for Anoka County, Minnesota, pursuant to Board Resolution Number 2014-56, dated May 27, 2014, is hereby designating the definite location of the right-of-way of County State Aid Highway No. 24 (Bridge Street) from 200 feet east of Kerry Street to 200 feet west of County Road No. 72 (Poppy Street) in the City of St. Francis. This plat, effected by the County of Anoka, Department of Highways, is hereby certified to be the official plat of that portion of said County State Aid Highway No. 24, located in Sections 32 and 33, Township 34, Range 24, Anoka County, Minnesota, as shown on this plat, pursuant to Minnesota Statutes 160.085.

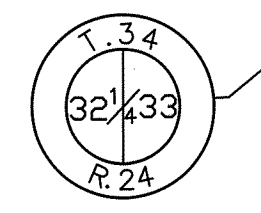
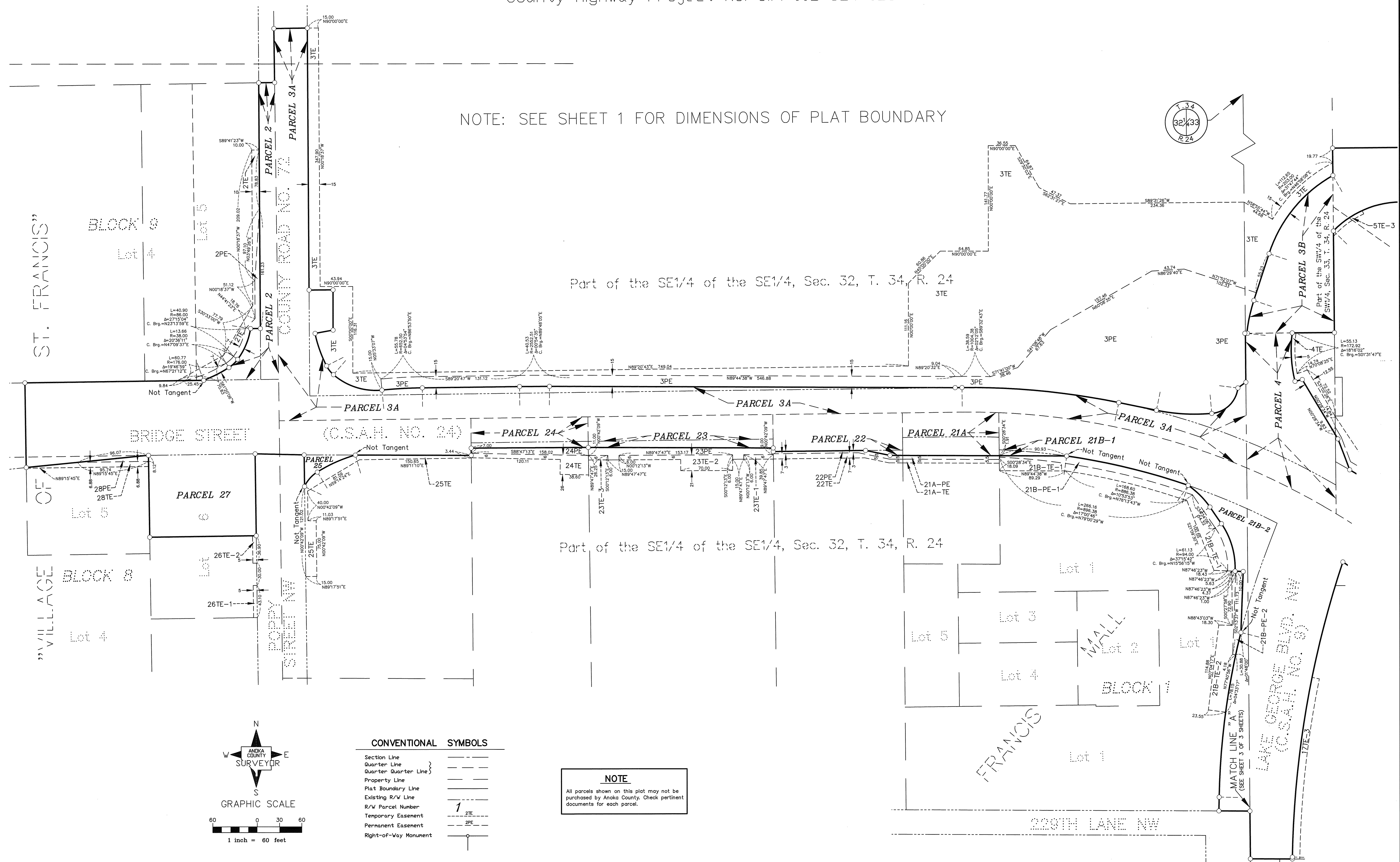
Certified by: *Douglas W. Fischer*  
Douglas W. Fischer, County Highway Engineer  
License No. 20235

Date December 8, 2014

# ANOKA COUNTY HIGHWAY RIGHT-OF-WAY PLAT NO. 91

County Highway Project No. S.P. 002-624-026

NOTE: SEE SHEET 1 FOR DIMENSIONS OF PLAT BOUNDARY

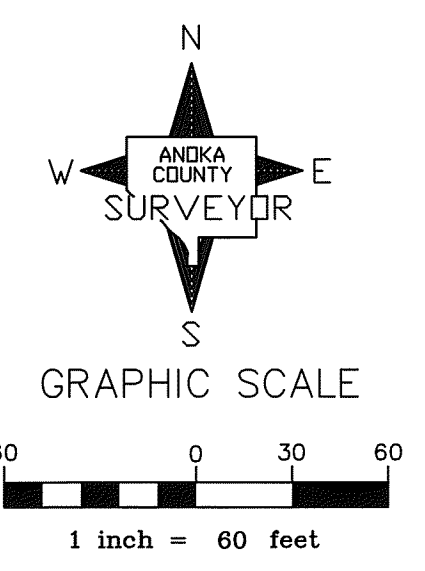


$L=40.90$   
 $R=86.00$   
 $\Delta=2713.54^{\circ}$   
 C. Brg. =  $N23^{\circ}13'59''E$   
 $L=13.66$   
 $R=36.00$   
 $\Delta=203^{\circ}38'11''$   
 C. Brg. =  $N47^{\circ}09'37''E$   
 $L=60.77$   
 $R=176.00$   
 $\Delta=19^{\circ}46'59''$   
 C. Brg. =  $N67^{\circ}21'12''E$

$L=55.13$   
 $R=172.92$   
 $\Delta=18^{\circ}18'02''$   
 C. Brg. =  $S01^{\circ}31'47''E$

$L=166.60$   
 $R=86.38$   
 $\Delta=103^{\circ}33'33''$   
 C. Brg. =  $N76^{\circ}13'43''W$   
 $L=266.16$   
 $R=86.38$   
 $\Delta=172^{\circ}04'48''$   
 C. Brg. =  $N76^{\circ}00'29''W$

$L=61.13$   
 $R=84.00$   
 $\Delta=371^{\circ}54'2''$   
 C. Brg. =  $N15^{\circ}56'15''W$



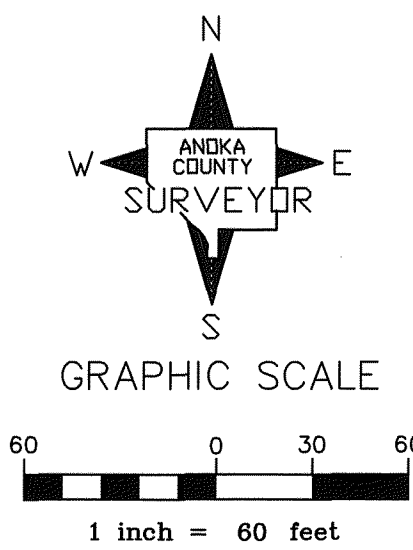
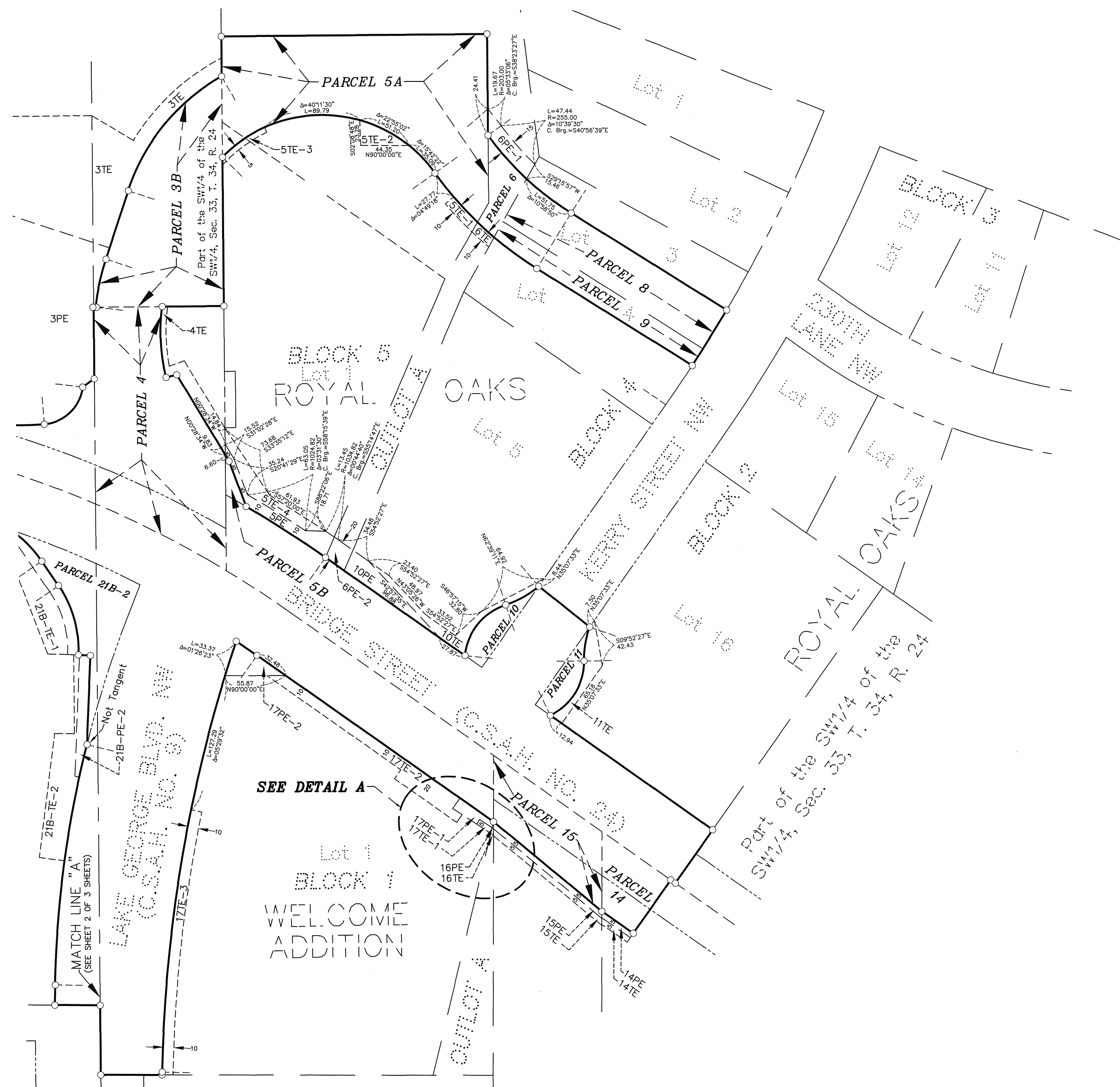
CONVENTIONAL SYMBOLS	
Section Line	---
Quarter Line	---
Quarter Quarter Line	---
Property Line	---
Plat Boundary Line	---
Existing R/W Line	---
R/W Parcel Number	1
Temporary Easement	2TE
Permanent Easement	2PE
Right-of-Way Monument	○

**NOTE**  
All parcels shown on this plat may not be purchased by Anoka County. Check pertinent documents for each parcel.



# ANOKA COUNTY HIGHWAY RIGHT-OF-WAY PLAT NO. 91

County Highway Project No. S.P. 002-624-026



CONVENTIONAL	SYMBOLS
Section Line	---
Quarter Line	---
Quarter Quarter Line	---
Property Line	---
Plat Boundary Line	---
Existing R/W Line	---
R/W Parcel Number	1 2TE
Temporary Easement	---
Permanent Easement	---
Right-of-Way Monument	---

**NOTE**  
 All parcels shown on this plat may not be purchased by Anoka County. Check pertinent documents for each parcel.

NOTE: SEE SHEET 1 FOR DIMENSIONS OF PLAT BOUNDARY

