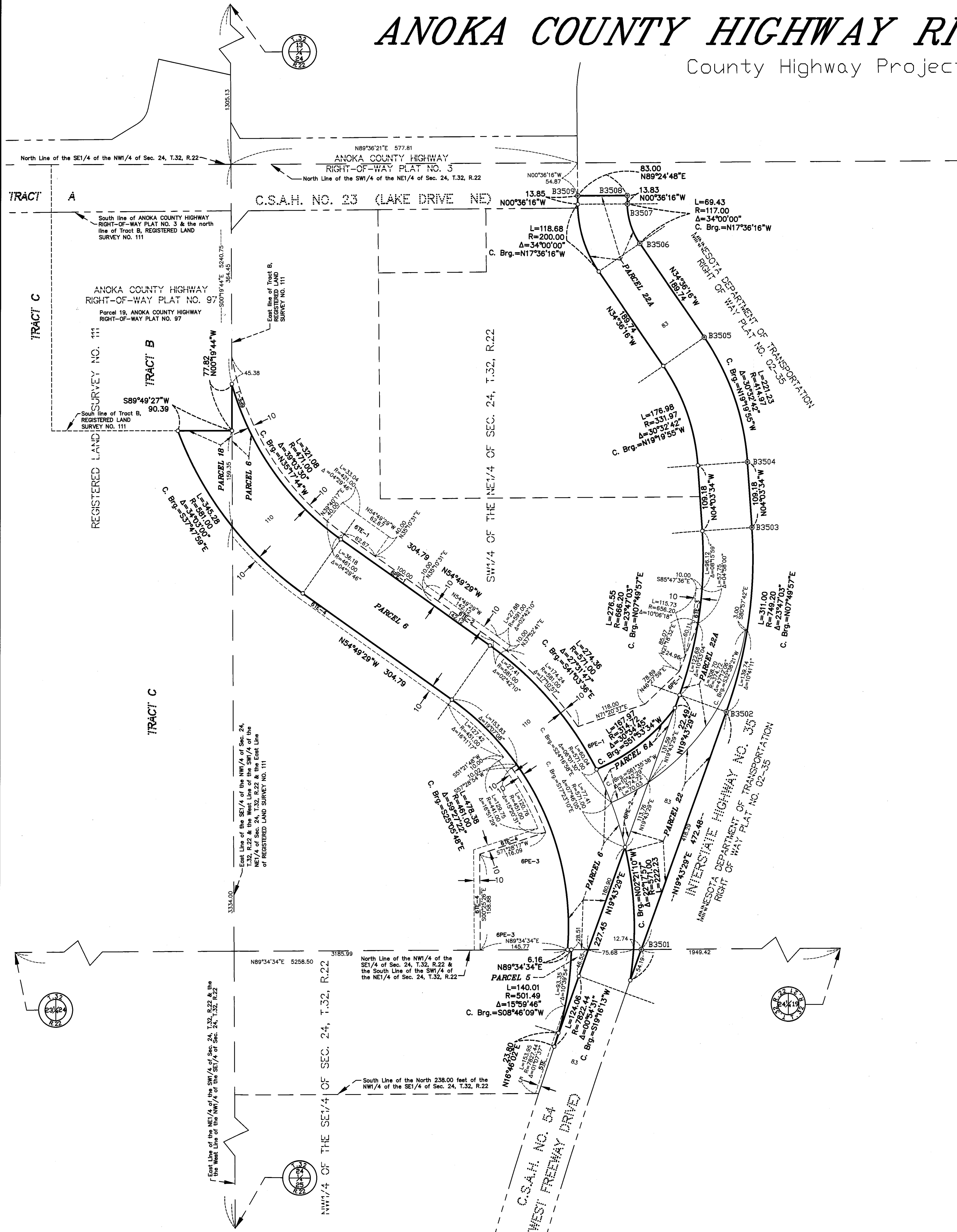


# ANOKA COUNTY HIGHWAY RIGHT-OF-WAY PLAT NO. 99

County Highway Project No. S.P. 002-654-003



### PROCEDURAL STATEMENTS:

- The methods and equipment used in the control surveys for this plat and the checks made on monument locations were accomplished with electronic distance measuring devices or global positioning systems.
- Parcel areas and entire tract areas shown hereon are computed from legal descriptions and not from actual surveys.
- Certificates of location are on file in the Office of the County Surveyor for the section corner monuments shown on this plat.
- For the details of the control survey and land survey, contact the County Surveyor's Office for the survey of ANOKA COUNTY HIGHWAY RIGHT-OF-WAY PLAT NO. 99, County Highway Project No. S.P. 002-654-003.
- Bearings shown are based on Anoka County Project Coordinate System, NAD83 (1996 Adjustment).

### County Surveyor:

I hereby certify that this plat is a true and correct representation of the boundaries as shown, and that said plat was made under my direct supervision, that all distances are correctly shown in feet and hundredths of a foot, that the monuments for the guidance of future surveys will be correctly placed in the ground as shown after the completion of construction, and that there are no public highways to be designated on said plat other than as shown thereon.

*Charles F. Gitzel*  
 Charles F. Gitzel, Anoka County Surveyor  
 License No. 19523

Date August 20, 2018

### County Engineer:

The Board of County Commissioners for Anoka County, Minnesota, pursuant to Board Resolution Number 2016-106, dated August 9, 2016, is hereby designating the definite location of the right-of-way of County State Aid Highway No. 54 (West Freeway Drive) from 1330 feet north of 147th Avenue NE to County State Aid Highway No. 23 (Lake Drive NE). This plat, effected by the County of Anoka, Department of Highways, is hereby certified to be the official plat of that portion of said County State Aid Highway No. 54, located in Section 24, Township 32, Range 22, Anoka County, Minnesota, as shown on this plat, pursuant to Minnesota Statutes 160.085.

*Douglas W. Fischer*  
 Douglas W. Fischer, County Highway Engineer  
 License No. 20235

Date August 20, 2018

### County Recorder/Registrar of Titles:

County of Anoka, State of Minnesota

I hereby certify that this plat of ANOKA COUNTY HIGHWAY RIGHT-OF-WAY PLAT NO. 99 was filed in the office of the County Recorder/Registrar of Titles for public record on this 21<sup>st</sup> day of Aug., 2018, at 1:17 o'clock P.M. and was duly recorded as Document Number 559046.001

*Jonell M. Sawyer*  
 Jonell M. Sawyer, County Recorder/Registrar of Titles

By *JMBischinger*, Deputy

### County Recorder/Registrar of Titles:

County of Anoka, State of Minnesota

I hereby certify that this plat of ANOKA COUNTY HIGHWAY RIGHT-OF-WAY PLAT NO. 99 was filed in the office of the County Recorder/Registrar of Titles for public record on this 21<sup>st</sup> day of Aug., 2018, at 8:18 o'clock A.M. and was duly recorded as Document Number 2207094.001

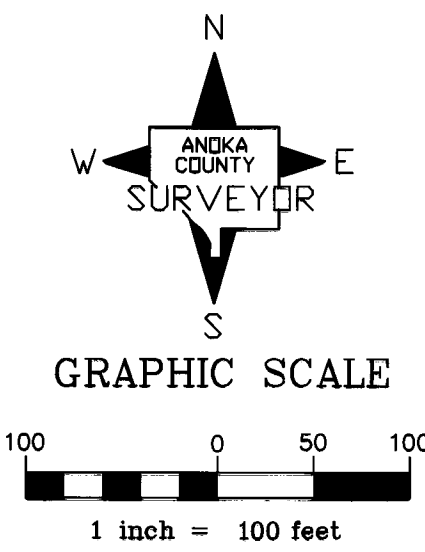
*Jonell M. Sawyer*  
 Jonell M. Sawyer, County Recorder/Registrar of Titles

By *JMBischinger*, Deputy

### DATA CONTAINED WITHIN THIS BOX FOR INSTRUCTIVE AND INFORMAL PURPOSES ONLY

RIGHT-OF-WAY IN SECTION 24, TOWNSHIP 32, RANGE 22

PARCEL	OWNER	LOCATION: BY PARCEL IDENT. NUMBER (PIN)	DEED RECORD OR BOOK, PAGE	TORRENS CERTIFICATE NUMBER	ENTIRE TRACT ACRES / SQUARE FEET	EXISTING RIGHT OF WAY ACRES / SQUARE FEET	NEW HWY. RIGHT OF WAY ACRES / SQUARE FEET	PERMANENT EASEMENT ACRES / SQUARE FEET	TEMPORARY EASEMENT ACRES / SQUARE FEET	TEMPORARY EASEMENT EXPIRES DATE	BALANCE OF TRACT REMAINING
											ACRES / SQUARE FEET
5 & 5TE	MIDI PROPERTY ONE, LLC	243222420004	1746859		2.9955		0.0358		0.0146	07/01/2020	2.9597
6	CITY OF COLUMBUS	243222130005	2018861.002 & 2018861.003 & 2018861.004		13.0483		1.559		6.36		128924
					15.0007		2.5198				
					65.3430		109764				
6A					15.0007		0.1542				
					65.3430		6715				
6, 6A, 6PE-1, 6PE-2, 6PE-3, 6TE-1, 6TE-2, 6TE-3 & 6TE-4					15.0007	0.0106	2.6740	1.1291	0.3833	07/01/2020	12.3161
					65.3430	46.3	116479	49184	16695		536488
18	NORTH METRO HARNESS INITIATIVE, LLC	24322240012		107106	13.4317		0.1858				13.2459
					58.5084		8094			576990	
22	ANOKA COUNTY		694397		2.3831		0.5486				
					10.3809		2.3898				
					2.3831		1.8345				
					10.3809		79911				
22 & 22A					2.3831		2.3831				0.0000
					10.3809					0	



### CONVENTIONAL SYMBOLS

- Section Line
- Quarter Line
- Quarter Quarter Line
- Property Line
- Plat Boundary Line
- Existing R/W Line
- R/W Parcel Number
- Temporary Easement
- Permanent Easement
- Right-of-Way Monument

Right-of-Way Monument Per MINNESOTA DEPARTMENT OF TRANSPORTATION RIGHT OF WAY PLAT NO. 02-35 © B3503

**NOTE**  
 All parcels shown on this plat may not be purchased by Anoka County. Check pertinent documents for each parcel.