

SANCTUARY PRESERVE 2ND ADDITION

BK 79 Abost Pg 4

CITY OF BLAINE
COUNTY OF ANOKA
SEC. 14, T. 31, R. 23

KNOW ALL PERSONS BY THESE PRESENTS: That Centex Homes, a Nevada general partnership, owner of the following described property:

Outlot D, CORRECTED PLAT OF SANCTUARY PRESERVE, according to the recorded plat thereof, Anoka County, Minnesota.

Has caused the same to be surveyed and platted as SANCTUARY PRESERVE 2ND ADDITION and does hereby dedicate to the public for public use the public way and the drainage and utility easements as shown on this plat.

In witness whereof said Centex Homes, a Nevada general partnership, has caused these presents to be signed by its proper partner this 13th day of April, 2016.

CENTEX HOMES
By: Centex Real Estate Corporation, a Nevada corporation,
its Managing General Partner

By [Signature]
Its CHIEF MANAGER

STATE OF MINNESOTA
COUNTY OF Anoka

This instrument was acknowledged before me this 13th day of April, 2016 by Graham Epperson, its Chief Manager of Centex Real Estate Corporation, a Nevada corporation, the managing general partner of Centex Homes, a Nevada general partnership, on behalf of the partnership.

Mailuter Mailee Heu

Notary Public, Anoka County, Minnesota

My Commission Expires 1/31/2017

I Craig W. Morse do hereby certify that this plat was prepared by me or under my direct supervision; that I am a duly Licensed Land Surveyor in the State of Minnesota; that this plat is a correct representation of the boundary survey; that all mathematical data and labels are correctly designated on this plat; that all monuments depicted on this plat have been, or will be correctly set within one year; that all water boundaries and wet lands, as defined in Minnesota Statutes, Section 505.01, Subd. 3, as of the date of this certificate are shown and labeled on this plat; and all public ways are shown and labeled on this plat.

Dated this 8th day of April, 2016.

[Signature]
Craig W. Morse, Licensed Land Surveyor
Minnesota License No. 23021

STATE OF MINNESOTA
COUNTY OF HENNEPIN

This instrument was acknowledged before me on April 6, 2016 by Craig W. Morse.

[Signature] Shannon Sinnen

Notary Public, Carver County, Minnesota

My Commission Expires January 31, 2016

CITY COUNCIL, CITY OF BLAINE, MINNESOTA

This plat of SANCTUARY PRESERVE 2ND ADDITION was approved and accepted by the City Council of the City of Blaine, Minnesota at a regular meeting thereof held this 3rd day of March, 2016, and said plat is in compliance with the provisions of Minnesota Statutes, Section 505.03, Subd. 2.

CITY COUNCIL, CITY OF BLAINE, MINNESOTA

[Signature]
Mayor

[Signature]
Clerk



COUNTY SURVEYOR

I hereby certify that in accordance with Minnesota Statutes, Section 505.021, Subd. 11, this plat has been reviewed and approved this 28th day of APRIL, 2016.

[Signature]
Larry D. Blum, Anoka County Surveyor

COUNTY AUDITOR/TREASURER

Pursuant to Minnesota Statutes, Section 505.021, Subd. 9, taxes payable in the year 2016 on the land hereinbefore described have been paid. Also, pursuant to Minnesota Statutes, Section 272.12, there are no delinquent taxes and transfer entered this 28th day of April, 2016.

[Signature]
Jonell M. Sawyer
Property Tax Administrator
By [Signature], Deputy

COUNTY RECORDER/REGISTRAR OF TITLES
COUNTY OF ANOKA, STATE OF MINNESOTA

I hereby certify that this plat of SANCTUARY PRESERVE 2ND ADDITION was filed in the office of the County Recorder/Registrar of Titles for public record on this 28th day of April, 2016, at 2:34 o'clock P.M. and was duly recorded in Book 79 of Abost Page 4, as Document Number 2135596.003.

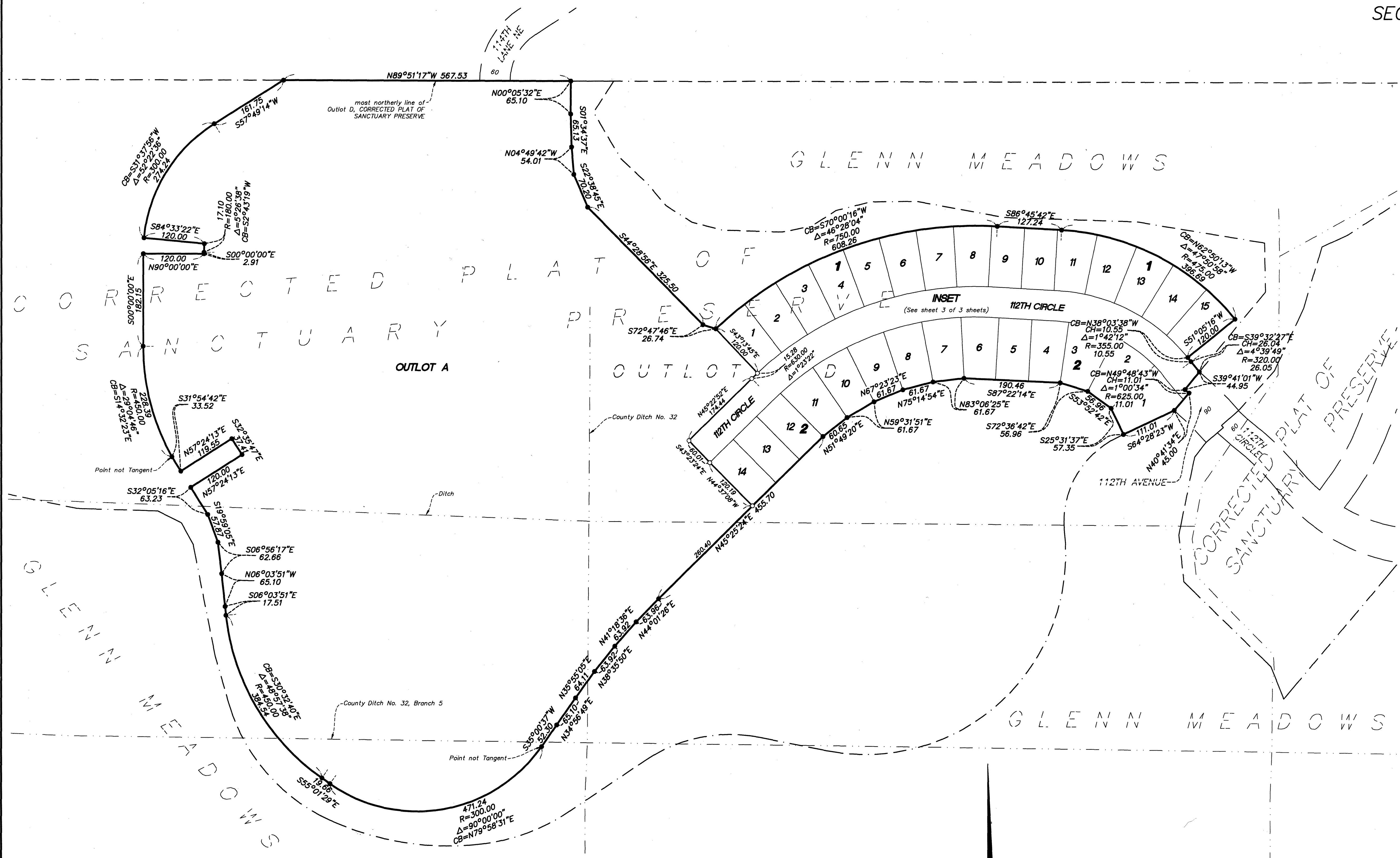
[Signature]
Jonell M. Sawyer
County Recorder/Registrar of Titles
By [Signature], Deputy

\$ 56.00

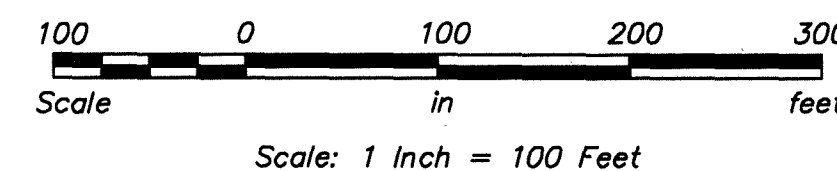
SANCTUARY PRESERVE 2ND ADDITION

BK 79 Abst PG4

CITY OF BLAINE
COUNTY OF ANOKA
SEC. 14, T. 31, R. 23



\$ 56.00



The most northerly line of Outlot D, CORRECTED PLAT OF SANCTUARY PRESERVE is assumed to bear N 89°51'17\"/>

- Denotes 1/2 inch by 14 inch rebar set and marked by License No. 23021
- Denotes iron monument found
- ⊙ Denotes Anoka County Cast Iron Monument

Westwood
Professional Services, Inc.

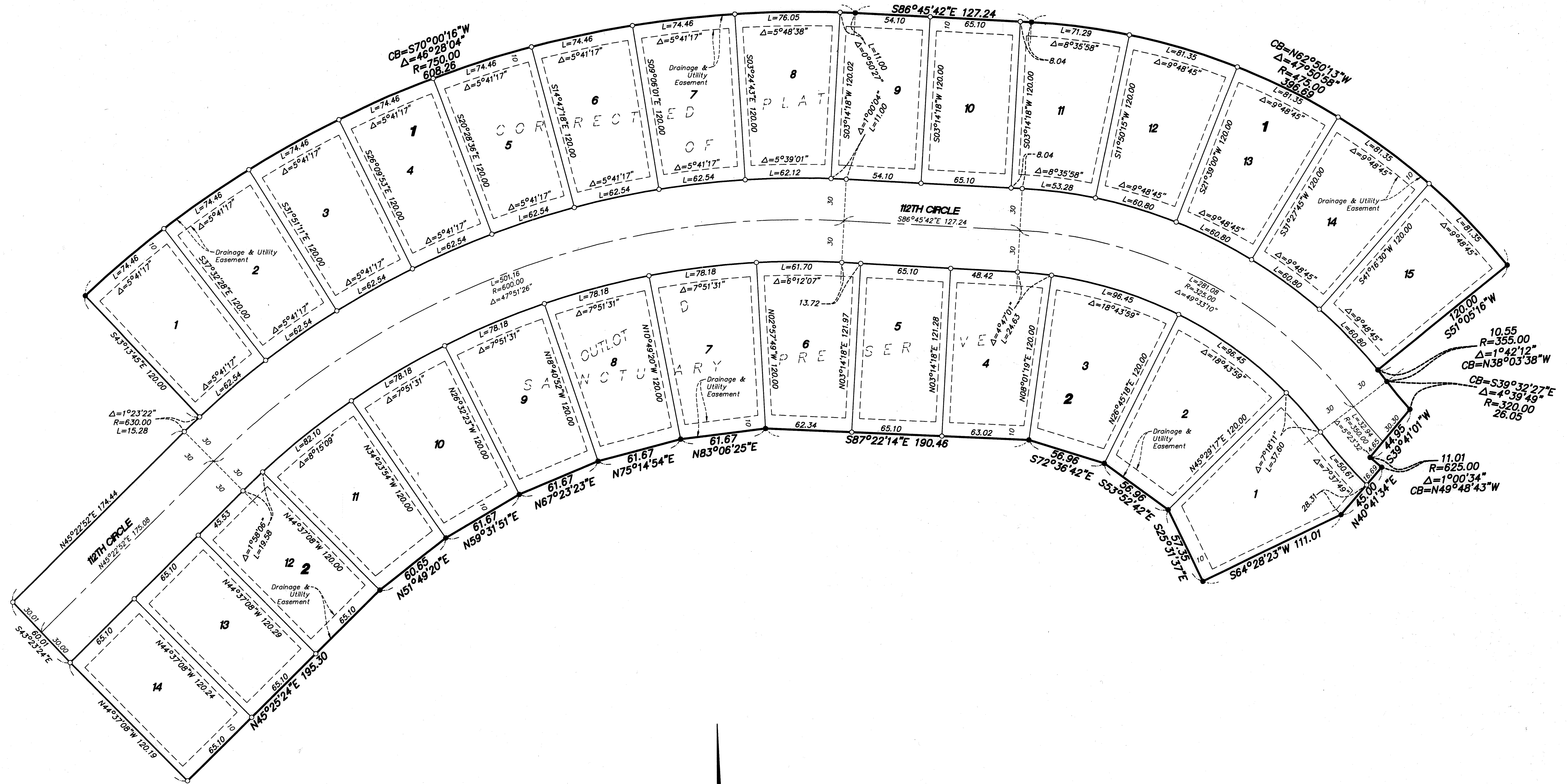
SANCTUARY PRESERVE 2ND ADDITION

BK 79 Abst Pg 4

CITY OF BLAINE
COUNTY OF ANOKA
SEC. 14, T. 31, R. 23

INSET

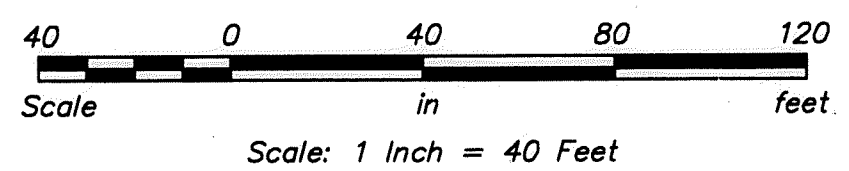
(From sheet 2 of 3 sheets)



10.55
R=355.00
 $\Delta=1^{\circ}42'12''$
CB=N38 $^{\circ}$ 03'38"W

CB=S39 $^{\circ}$ 32'27"E
 $\Delta=4^{\circ}39'49''$
R=320.00
26.05

11.01
R=625.00
 $\Delta=1^{\circ}00'34''$
CB=N49 $^{\circ}$ 48'43"W



The most northerly line of Outlot D, CORRECTED PLAT OF SANCTUARY PRESERVE is assumed to bear N 89 $^{\circ}$ 51'17" W.

- Denotes 1/2 inch by 14 inch iron rebar set and marked by License No. 23021
- Denotes iron monument found

