

SANCTUARY PRESERVE 4TH ADDITION

CITY OF BLAINE,
COUNTY OF ANOKA
SEC. 14, T. 31, R. 23

KNOW ALL PERSONS BY THESE PRESENTS: That Centex Homes, a Nevada general partnership, owner of the following described property:

Outlot F, CORRECTED PLAT OF SANCTUARY PRESERVE, according to the recorded plat thereof, Anoka County, Minnesota.

AND

Outlot B, SANCTUARY PRESERVE 3RD ADDITION, according to the recorded plat thereof, Anoka County, Minnesota.

Has caused the same to be surveyed and platted as SANCTUARY PRESERVE 4TH ADDITION and does hereby dedicate to the public for public use the public ways and the drainage and utility easements as shown on this plat.

In witness whereof said Centex Homes, a Nevada general partnership, has caused these presents to be signed by its proper partner this 26 day of February, 2018.

CENTEX HOMES
By: Centex Real Estate Corporation, a Nevada corporation,
its Managing General Partner

By: [Signature]
its VP OF LAND

STATE OF MINNESOTA
COUNTY OF HENNEPIN

This instrument was acknowledged before me this 26th day of FEBRUARY, 2018 by ERIC PADGET, its VP OF LAND of Centex Real Estate Corporation, a Nevada corporation, the managing General Partner of Centex Homes, a Nevada general partnership, on behalf of the partnership.

[Signature]
Notary Public, DAKOTA County, Minnesota
My Commission Expires JAN. 31, 2021

JENNIFER LINNE MUIWID-HERMANN
(Name Printed)

I Craig W. Morse do hereby certify that this plat was prepared by me or under my direct supervision; that I am a duly Licensed Land Surveyor in the State of Minnesota; that this plat is a correct representation of the boundary survey; that all mathematical data and labels are correctly designated on this plat; that all monuments depicted on this plat have been, or will be correctly set within one year; that all water boundaries and wet lands, as defined in Minnesota Statutes, Section 505.01, Subd. 3, as of the date of this certificate are shown and labeled on this plat; and all public ways are shown and labeled on this plat.

Dated this 23rd day of FEBRUARY, 2018.

[Signature]
Craig W. Morse, Licensed Land Surveyor
Minnesota License No. 23021

STATE OF MINNESOTA
COUNTY OF HENNEPIN

This instrument was acknowledged before me on February 23, 2018 by Craig W. Morse.

[Signature]
Notary Public, CARVER County, Minnesota
My Commission Expires January 31, 2023

Shannon Simzen
(Name Printed)

CITY COUNCIL, CITY OF BLAINE, MINNESOTA

This plat of SANCTUARY PRESERVE 4TH ADDITION was approved and accepted by the City Council of the City of Blaine, Minnesota at a regular meeting thereof held this 4th day of January, 2018, and said plat is in compliance with the provisions of Minnesota Statutes, Section 505.03, Subd. 2.

CITY COUNCIL, CITY OF BLAINE, MINNESOTA

[Signature] Mayor
[Signature] Clerk

COUNTY SURVEYOR

I hereby certify that in accordance with Minnesota Statutes, Section 505.021, Subd. 11, this plat has been reviewed and approved this 19th day of March, 2018.

Larry D. Holium by Charles F. Guter, Deputy
Larry D. Holium, Anoka County Surveyor

COUNTY AUDITOR/TREASURER

Pursuant to Minnesota Statutes, Section 505.021, Subd. 9, taxes payable in the year 2018 on the land hereinbefore described have been paid. Also, pursuant to Minnesota Statutes, Section 272.12, there are no delinquent taxes and transfer entered this 19th day of March, 2018.

Jonell M. Sawyer
Property Tax Administrator
By: Amy M. Smith, Deputy

COUNTY RECORDER/REGISTRAR OF TITLES
COUNTY OF ANOKA, STATE OF MINNESOTA

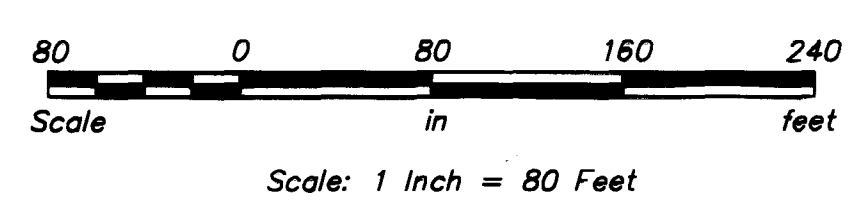
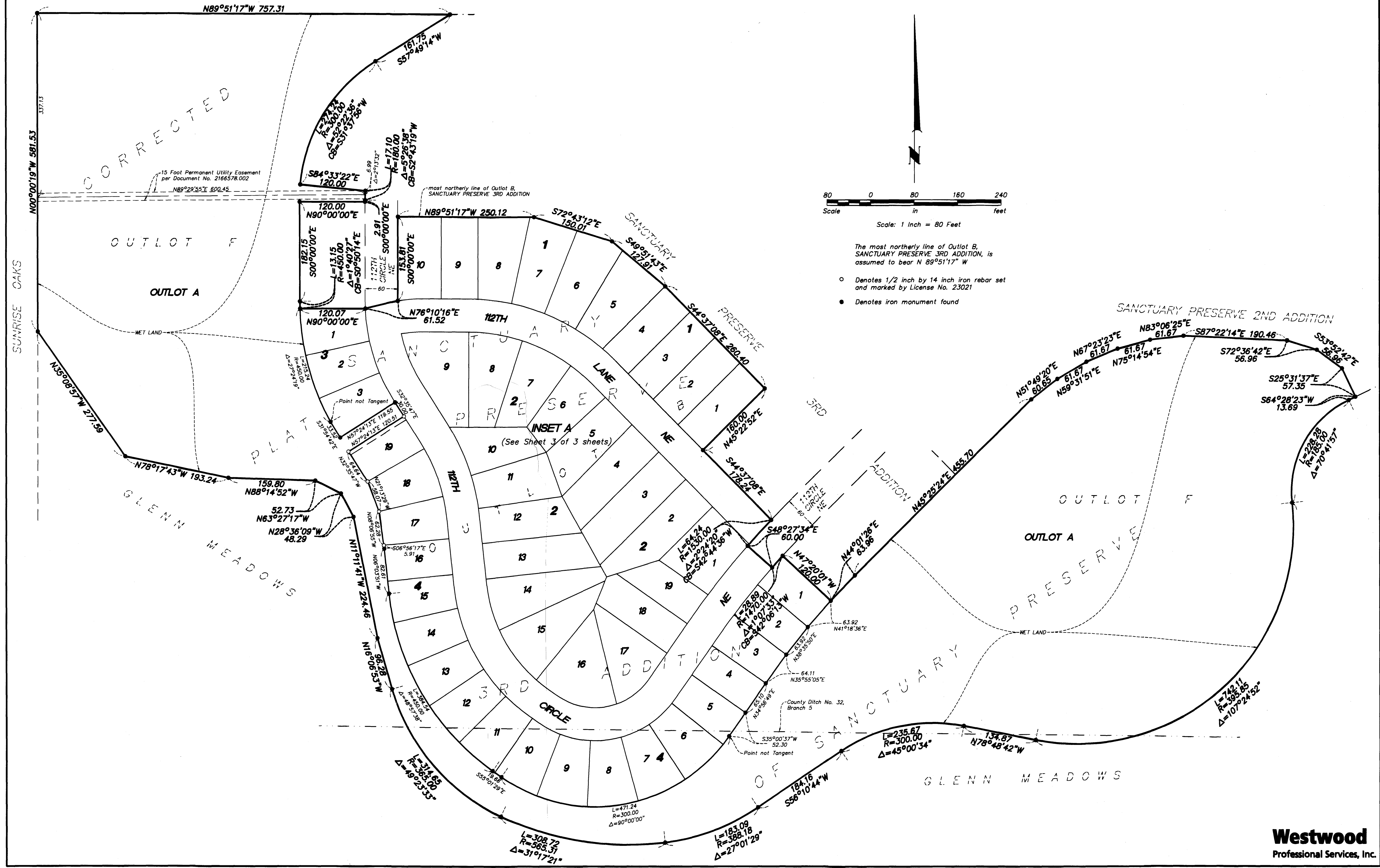
I hereby certify that this plat of SANCTUARY PRESERVE 4TH ADDITION was filed in the office of the County Recorder/Registrar of Titles for public record on this 19th day of March, 2018, at 11:45 o'clock A.M. and was duly recorded as Document Number 2195114.004.

Jonell M. Sawyer
County Recorder/Registrar of Titles
By: Amy M. Smith, Deputy

\$ 56.00

SANCTUARY PRESERVE 4TH ADDITION

CITY OF BLAINE
COUNTY OF ANOKA
SEC. 14, T. 31, R. 23



The most northerly line of Outlet B, SANCTUARY PRESERVE 3RD ADDITION, is assumed to bear N 89°51'17" W

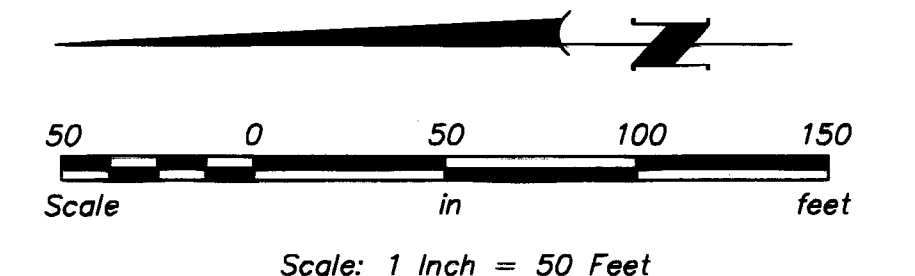
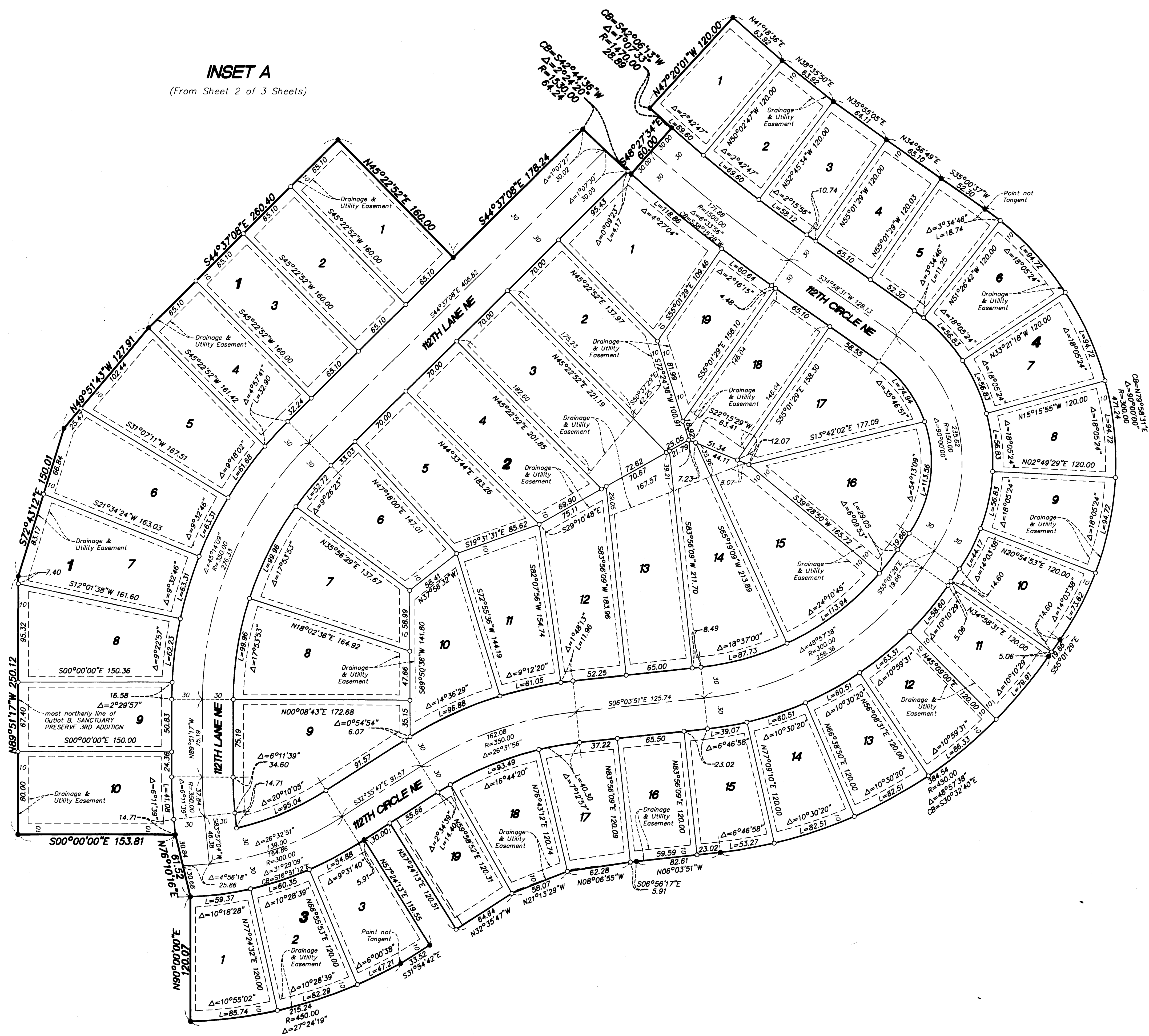
- Denotes 1/2 inch by 14 inch iron rebar set and marked by License No. 23021
- Denotes iron monument found

SANCTUARY PRESERVE 4TH ADDITION

CITY OF BLAINE
COUNTY OF ANOKA
SEC. 14, T. 31, R. 23

INSET A

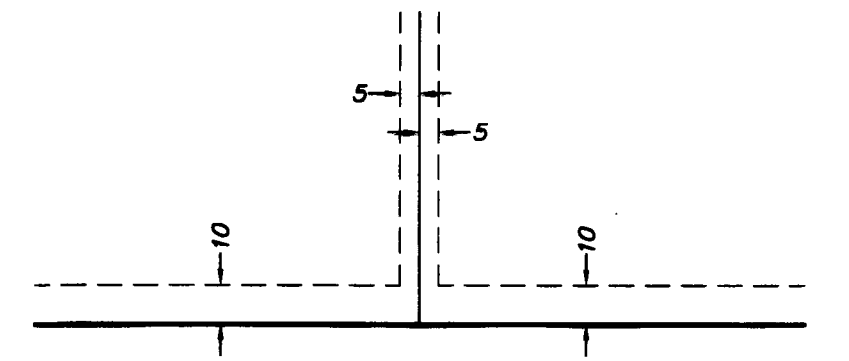
(From Sheet 2 of 3 Sheets)



The most northerly line of Outlot B, SANCTUARY PRESERVE 3RD ADDITION, is assumed to bear N 89°51'17" W

- Denotes 1/2 inch by 14 inch iron rebar set and marked by License No. 23021
- Denotes iron monument found

Drainage and Utility Easements are shown thus:



Being 5 feet in width, unless otherwise indicated, and adjoining lot lines, and 10 feet in width and adjoining right-of-way lines and rear lot lines as shown on the plat.