

SAND CREEK ESTATES

CITY OF BLAINE COUNTY OF ANOKA

KNOW ALL MEN BY THESE PRESENTS: that G. M. Investment Co., a Minnesota Corporation, owner and proprietor of the following described property situated in the County of Anoka, State of Minnesota, to-wit:

Lot thirty-nine (39) of CENTRAL AVENUE ACRES, according to the plat thereof, on file and of record in the office of the Registrar of Titles of said Anoka County.

Have caused the same to be surveyed and platted as SAND CREEK ESTATES and do hereby donate and dedicate to the public for public use forever the street and avenue as shown on the plat, also dedicating the easements for utility and/or drainage purposes as shown on the plat. In witness whereof, said G. M. Investment Co. has caused these presents to be signed by its proper officers and its corporate seal to be hereunto affixed on this 24 day of June, 1984.

SIGNED: G. M. Investment Co.
By Gilbert A. Menkfeld, President By Constance H. Eisenschenk, Secretary

STATE OF MINNESOTA) The foregoing instrument was acknowledged before me this June day of June
COUNTY OF ANOKA) ss. 1984, By Gilbert A. Menkfeld, President, and Constance H. Eisenschenk, Secretary,
of G. M. Investment Co., a Minnesota Corporation, on behalf of the corporation.
Jeffrey N. Caine My commission expires: August 9, 1989
Notary Public, Anoka County, Minn.

I hereby certify that I have surveyed and platted the land described in the dedication on this plat as SAND CREEK ESTATES; that the plat is a correct representation of said survey; that all distances are correctly shown on said plat in feet and hundredths of a foot; that the monuments have been correctly placed in the ground as shown; that the outside boundaries are correctly designated on said plat; and that there are no wet lands or public highways to be designated on said plat other than as shown thereon.

Jeffrey N. Caine
Registered Land Surveyor, Minn. Reg. No. 12251

STATE OF MINNESOTA) The surveyors certificate was acknowledged before me, a Notary Public, this 7th day
COUNTY OF ANOKA) ss. of June, 1984, by Jeffrey N. Caine, Land Surveyor.



Jeffrey N. Caine My commission expires: July 23, 1986
Notary Public, Anoka County, Minn.

We hereby certify that the City Council of the City of Blaine, Anoka County, Minnesota, duly accepted and approved the plat of SAND CREEK ESTATES at a regular meeting held this 17th day of APRIL, 1984.

City of Blaine,
Anoka County, Minnesota:
By Francis Fogarty, Mayor
By Leslie Johnson, City Manager

Checked and approved this 11th day of June, 1984.

By Robert W. Anderson, Anoka County Surveyor.

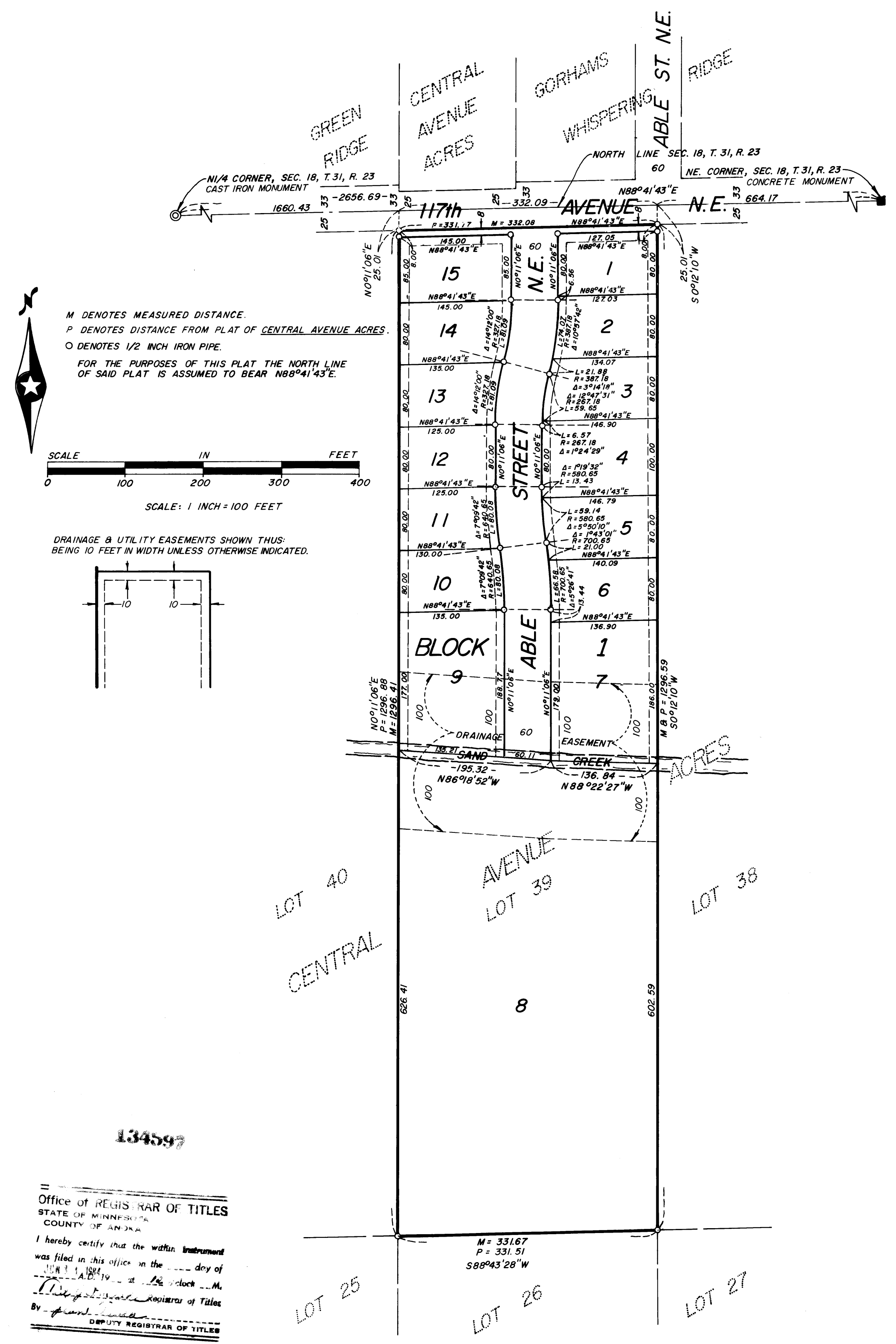
"NO DELINQUENT TAXES
AND TRANSFER ENTERED"

June 11, 1984
Charles R. Lefebvre
Auditor, Anoka County

BY S. Culver
Deputy

I HEREBY CERTIFY THAT THE TAXES
PAYABLE IN THE YEAR 1984 ON THE
LANDS DESCRIBED WITHIN ARE PAID
Donald C. Bradley
Anoka County Treasurer

Caine & Associates
Land Surveyors, Inc.



134597
Office of REGISTRAR OF TITLES
STATE OF MINNESOTA
COUNTY OF ANOKA
I hereby certify that the within instrument
was filed in this office on the 11th day of
June, 1984 at 10:15 o'clock A.M.
Deputy Registrar of Titles
By Deputy Registrar of Titles
DEPUTY REGISTRAR OF TITLES