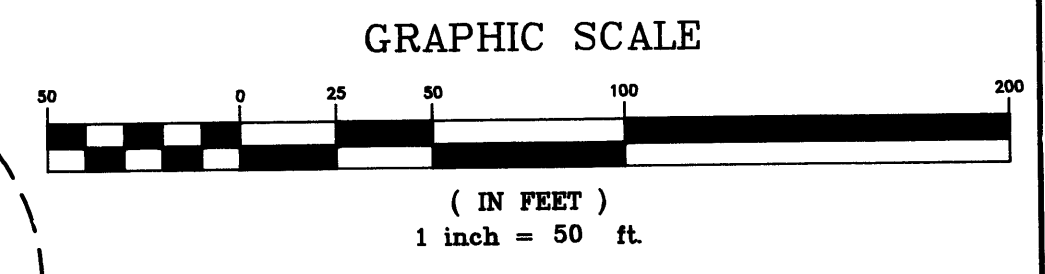
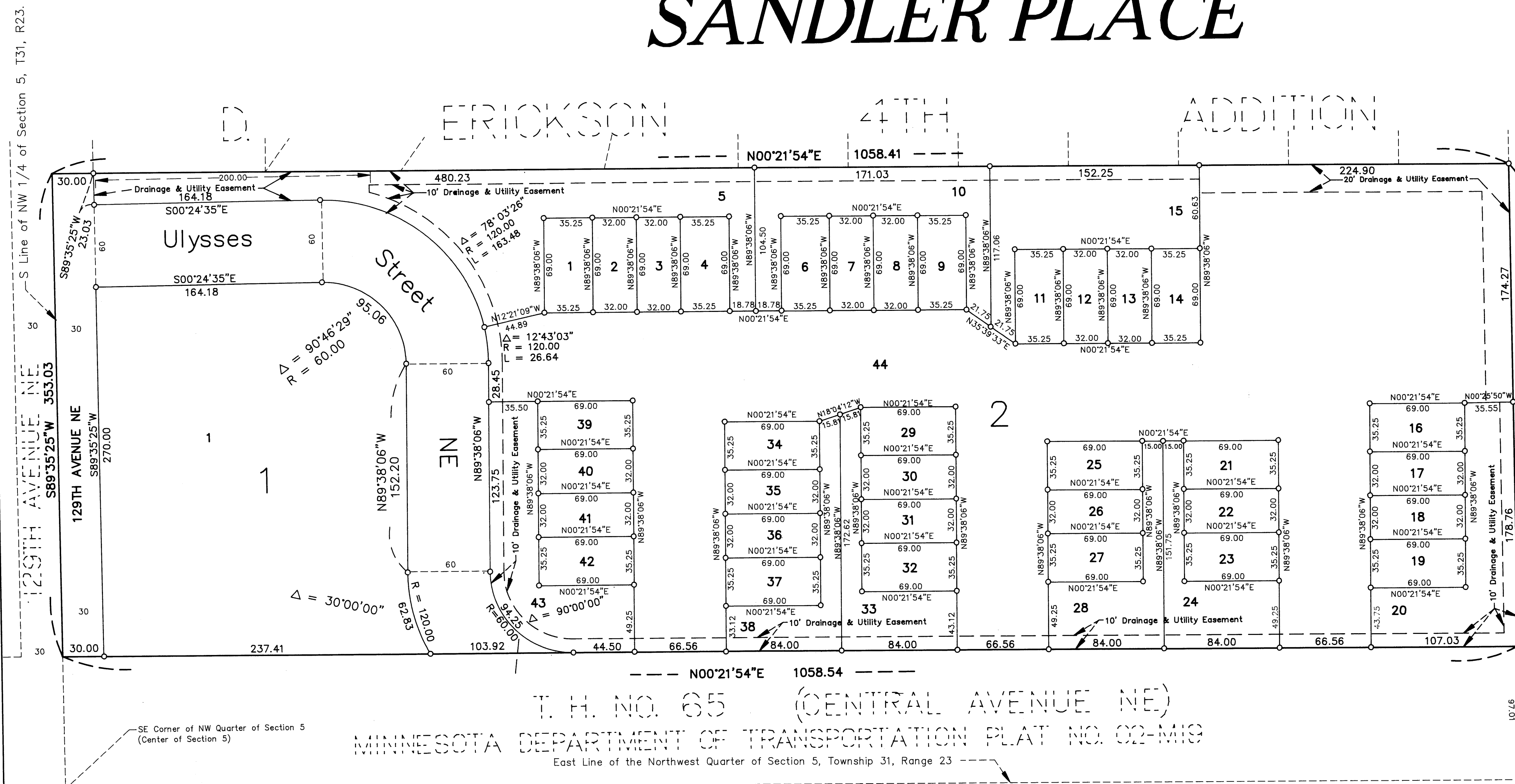


CITY OF BLAINE
COUNTY OF ANOKA

SANDLER PLACE



NOTE: FOR THE PURPOSES OF THIS PLAT, THE EAST LINE OF THE NORTHWEST QUARTER OF SECTION 5 IS ASSUMED TO BEAR S00°21'54"W.

- DENOTES 1/2" IRON PIPE SET AND MARKED BY R.L.S. REGISTRATION NO. 6598
- DENOTES AN ANOKA COUNTY MONUMENT

1288971
OFFICE OF COUNTY RECORDER
STATE OF MINNESOTA, COUNTY OF ANOKA
I hereby certify that the within instrument was filed in this office for record on the 28th day of July, A.D., 1997 at 2:09 o'clock P.M. and was duly recorded in book 54 page 42
Edward M. Preska
County Recorder
By E.T.C.
Deputy

I HEREBY CERTIFY THAT THE CURRENT AND DELINQUENT TAXES ON THE LANDS DESCRIBED WITHIN ARE PAID AND THE TRANSFER IS
ENTERED July 28, 1997
EDWARD M. PRESKA
PROPERTY TAX ADMINISTRATOR
BY J. Culver
DEPUTY PROPERTY TAX ADMINISTRATOR

T. H. NO. 65 (CENTRAL AVENUE NE)
MINNESOTA DEPARTMENT OF TRANSPORTATION PLAT NO. 02-M19
East Line of the Northwest Quarter of Section 5, Township 31, Range 23

KNOW ALL PERSONS BY THESE PRESENTS: that Jet Pak International, Inc., a corporation under the laws of Minnesota, owner of the following described property situated in the County of Anoka, State of Minnesota, to-wit:

That part of the Northwest Quarter of Section 5, Township 31, Range 23 West of the 4th Principal Meridian, Anoka County, Minnesota, described as follows:

Commencing at the Northeast corner of said Northwest Quarter; thence South 0 degrees 21 minutes 54 seconds West 1540.48 feet, assumed bearing, along the East line of said Northwest Quarter; thence South 89 degrees 34 minutes 10 seconds West 97.01 feet to the TRUE POINT OF BEGINNING; thence South 0 degrees 21 minutes 54 seconds West 1058.54 feet to the South line of said Northwest Quarter; thence South 89 degrees 35 minutes 25 seconds West 353.03 feet along the South line of said Northwest Quarter; thence North 0 degrees 21 minutes 54 seconds East 1058.41 feet; thence North 89 degrees 34 minutes 10 seconds East 353.03 feet to said TRUE POINT OF BEGINNING, subject to easements.

Have caused the same to be surveyed and platted as SANDLER PLACE and do hereby donate and dedicate to the public for public use forever the street and avenue as shown on the plat, also dedicating the easements for utility and/or drainage purposes as shown on the plat. In witness whereof, said Jet Pak International, Inc. has caused these presents to be signed by its proper officer on this 23rd day of July, 1997.

SIGNED: JET PAK INTERNATIONAL, INC.
Tony Sandler, Attorney-in-fact of Jet Pak International, Inc., a Minnesota Corporation

STATE OF MINNESOTA) The foregoing instrument was acknowledged before me this
COUNTY OF Anoka) 23 day of July, 1997, by Tony Sandler, Attorney-in-fact
of Jet Pak International, Inc., a Minnesota corporation, on behalf of the corporation.

Eileen R. Dorsey
NOTARY PUBLIC
MINNESOTA
MY COMMISSION EXPIRES 01-31-2000

Edwin R. Dorsey
Notary Public, Anoka County, Minnesota.
My Commission expires 1-31-2000

I hereby certify that I have surveyed and platted the land described on this plat as SANDLER PLACE; and that this plat is a correct representation of said survey; that all distances are correctly shown on said plat in feet and hundredths of a foot; that all monuments have been correctly placed in the ground as shown on said plat; that the outside boundary lines are correctly designated on said plat; and that there are no public highways or wetlands to be designated on said plat other than as shown thereon.

Donald E. Ernster
Donald E. Ernster, Land Surveyor
Minnesota License No. 6598

STATE OF MINNESOTA) The surveyors certificate was acknowledged before me,
COUNTY OF Anoka) a Notary Public, this 4th day of July, 1997,
by Donald E. Ernster, Land Surveyor.

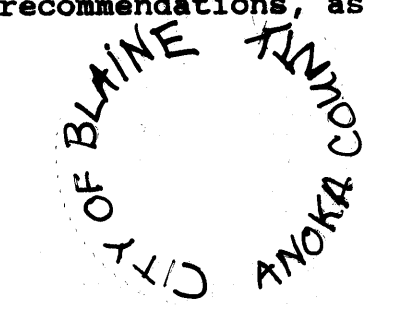
Lana R. Hengstler
NOTARY PUBLIC - MINNESOTA
My Comm. Exp. Jan. 31, 2000

Lana R. Hengstler
Notary Public, Anoka County, Minnesota.
My Commission expires January 31, 2000

I hereby certify that the City Council of the City of Blaine, Anoka County, Minnesota, duly accepted and approved the plat of SANDLER PLACE at a regular meeting held this 25 day of July, 1997. If applicable, the written comments and recommendations of the Commissioner of Transportation and the County Highway Engineer have been received by the City or the prescribed 30 day period has elapsed without receipt of such comments and recommendations, as provided by Minn. Statutes, Section 505.03, Subd. 2.

City of Blaine
Anoka County, Minnesota;
By Tammy Pagan, Mayor
By Gregory W. Krusey, City Manager

Checked and Approved this 25th day of July, 1997.
By W. O. Culver, Anoka County Surveyor.



Mattke Engineering, Inc.

97050751 \$ 1,445.00