

SARAH ADDITION

BK 76 Abst. Pg 6

City of Fridley
County of Anoka
SEC. 15, TWP. 30, RNG. 24

KNOW ALL PERSONS BY THESE PRESENTS: That Bank of America, National Association, a national banking association, owner of the following described property:

Lots 2 and 3, Block 2, JOHNSON'S RIVER LANE ADDITION

Has caused the same to be surveyed and platted as SARAH ADDITION and does hereby dedicate to the public for public use the public way and the drainage and utility easements as created by this plat.

In witness whereof said Bank of America, National Association, a national banking association, has caused these presents to be signed by its proper partner this 16th day of December, 2011.

BANK OF AMERICA, NATIONAL ASSOCIATION

Carol Stull, Assistant Vice President
Carol Stull

STATE OF Arizona
COUNTY OF Maricopa
This instrument was acknowledged before me this 16th day of December, 2011 by Carol Stull, Assistant Vice President of Bank of America, National Association, a national association, on behalf of the association.

Carol Stull
Notary Public, Maricopa County, Arizona
My Commission Expires 11/24/2014

I Jason E. Rud do hereby certify that this plat was prepared by me or under my direct supervision; that I am a duly Licensed Land Surveyor in the State of Minnesota; that this plat is a correct representation of the boundary survey; that all mathematical data and labels are correctly designated on this plat; that all monuments depicted on this plat have been, or will be correctly set within one year; that all water boundaries and wet lands, as defined in Minnesota Statutes, Section 505.01, Subd. 3, as of the date of this certificate are shown and labeled on this plat; and all public ways are shown and labeled on this plat.

Dated this 29th day of November, 2011.

Jason E. Rud
Jason E. Rud, Licensed Land Surveyor
Minnesota License No. 41578

STATE OF MINNESOTA
COUNTY OF RAMSEY
This instrument was acknowledged before me this 29th day of November, 2011 by Jason E. Rud.

Debbie L. Munnich
Debbie L. Munnich
Notary Public, Ramsey County, Minnesota
My Commission Expires Jan 31, 2014

City Council, City of Fridley, Minnesota

This plat of SARAH ADDITION was approved and accepted by the City Council of the City of Fridley, Minnesota at a regular meeting thereof held this 12th day of December, 2011, and said plat is in compliance with the provisions of Minnesota Statutes, Section 505.03, Subd. 2.

City Council, City of Fridley, Minnesota

By Scott J. Lund Mayor By Debbie L. Munnich Clerk

County Surveyor

I hereby certify that in accordance with Minnesota Statutes, Section 505.021, Subd. II, this plat has been reviewed and approved this 16th day of DECEMBER, 2011. 2026198-002

By Larry D. Holm
Larry D. Holm
Anoka County Surveyor

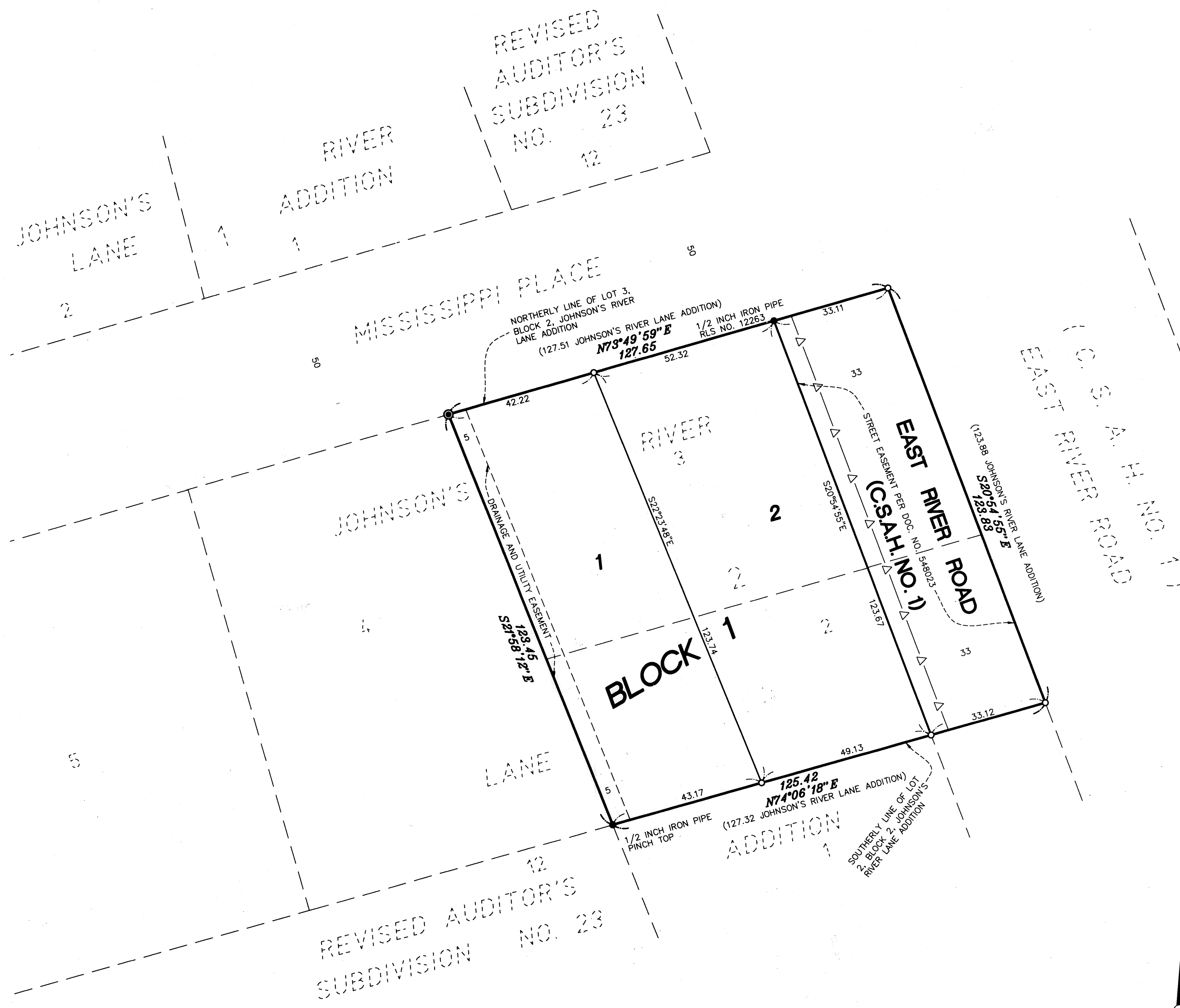
Office of RECORDER/REGISTRAR
OF TITLES

STATE OF MINNESOTA COUNTY OF ANOKA

I HEREBY CERTIFY THAT THE CURRENT AND DELINQUENT TAXES ON THE LANDS DESCRIBED WITHIN ARE PAID AND THE TRANSFER IS ENTERED Dec 16, 2011
Larry D. Holm
PROPERTY TAX ADMINISTRATOR
BY [Signature]
DEPUTY

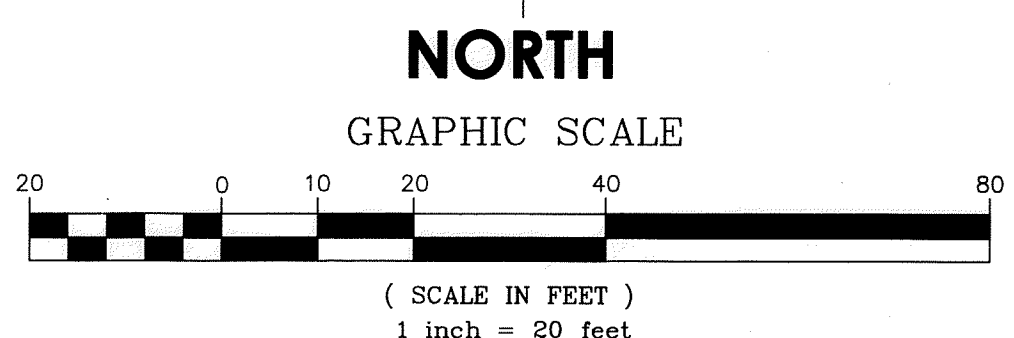
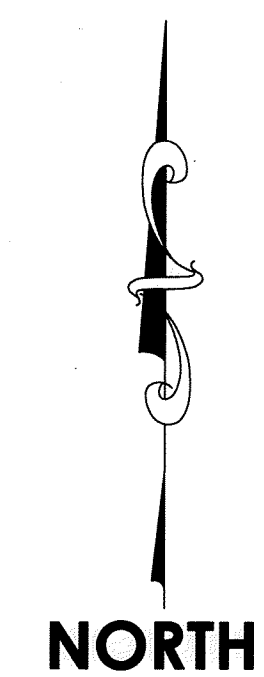
I hereby certify that the within instrument was filed in this office for record on the 16th day of Dec, 2011 at 12:17 o'clock P.M. and was duly recorded in book 76 Abst. page 6
Larry D. Holm
Recorder/Registrar of Titles
By [Signature]
Deputy

\$ 56.00



- Denotes 1/2 inch by 18 inch iron pipe monument set marked RLS 41578
- Denotes 1/2 inch iron pipe monument found as labeled
- ⊙ Denotes found Judicial Landmark
- △— Denotes access dedicated to Anoka County

For the purposes of this plat the Northerly line of the Lot 3, Block 2, JOHNSON'S RIVER LANE ADDITION is assumed to have a bearing of North 73 degrees 49 minutes 59 seconds East.



E. G. RUD & SONS, INC.
EST. 1977 Professional Land Surveyors