

SAUTER DISTRICT PUD

City of East Bethel
County of Anoka
SEC. 32, TWP. 33, R. 23

KNOW ALL PERSONS BY THESE PRESENTS: That T & G Land, Inc., a Minnesota corporation, owner of the following described property:

Outlot A, T & G FIRST ADDITION, Anoka County, Minnesota. EXCEPT the following described parcel:

That part of Outlot A, T & G FIRST ADDITION, Anoka County, Minnesota described as commencing at the Southeast corner of said Outlot A; thence North 89 degrees 38 minutes 51 seconds West, assumed bearing, along the South line of said Outlot A a distance of 545.84 feet to the point of beginning; thence North 06 degrees 43 minutes 50 seconds West 147.94 feet; thence North 02 degrees 01 minutes 23 seconds West 65.15 feet; thence North 86 degrees 01 minutes 51 seconds West 675.23 feet to the West line of the Northeast Quarter of the Southwest Quarter of Section 32, Township 33, Range 23, Anoka County, Minnesota; thence South 04 degrees 34 minutes 09 seconds East along said West line 255.44 feet to said South line of Outlot A; thence South 89 degrees 38 minutes 51 seconds East along said South line 672.92 feet to the point of beginning.

Has caused the same to be surveyed and plotted as SAUTER DISTRICT PUD and does hereby dedicate to the public for public use the drainage and utility easements as shown on this plat.

In witness whereof said T & G Land, Inc., a Minnesota corporation, has caused these presents to be signed by its proper officer this 27 day of October, 2017.

T & G LAND, INC.

Thomas C. Sauter
Thomas C. Sauter, President

STATE OF MINNESOTA
COUNTY OF Anoka

This instrument was acknowledged before me this 27th day of October, 2017 by Thomas C. Sauter, President of T & G Land, Inc., a Minnesota corporation, on behalf of the corporation.

Nicole A. Johnson
Nicole A. Johnson
Notary Public, Anoka County, Minnesota
My Commission Expires January 31, 2020

I, Jason E. Rud do hereby certify that this plat was prepared by me or under my direct supervision; that I am a duly Licensed Land Surveyor in the State of Minnesota; that this plat is a correct representation of the boundary survey; that all mathematical data and labels are correctly designated on this plat; that all monuments depicted on this plat have been, or will be correctly set within one year; that all water boundaries and wet lands, as defined in Minnesota Statutes, Section 505.01, Subd. 3, as of the date of this certificate are shown and labeled on this plat; and all public ways are shown and labeled on this plat.

Dated this 26th day of OCTOBER, 2017.

Jason E. Rud
Jason E. Rud, Licensed Land Surveyor
Minnesota License No. 41578

STATE OF MINNESOTA
COUNTY OF Anoka

This instrument was acknowledged before me this 26th day of October, 2017 by Jason E. Rud.

Nicole A. Johnson
Nicole A. Johnson
Notary Public, Anoka County, Minnesota
My Commission Expires January 31, 2020

CITY COUNCIL, CITY OF EAST BETHEL, MINNESOTA

This plat of SAUTER DISTRICT PUD was approved and accepted by the City Council of the City of East Bethel, Minnesota at a regular meeting thereof held this 27 day of October, 2017, and said plat is in compliance with the provisions of Minnesota Statutes, Section 505.03, Subd. 2.

City Council, City of East Bethel, Minnesota

By *Jack Davis* Mayor By *Jack Davis* Clerk

COUNTY SURVEYOR

I hereby certify that in accordance with Minnesota Statutes, Section 505.021, Subd. 11, this plat has been reviewed and approved this 31st day of October, 2017.

Larry D. Hagan
Larry D. Hagan
Anoka County Surveyor

COUNTY AUDITOR/TREASURER

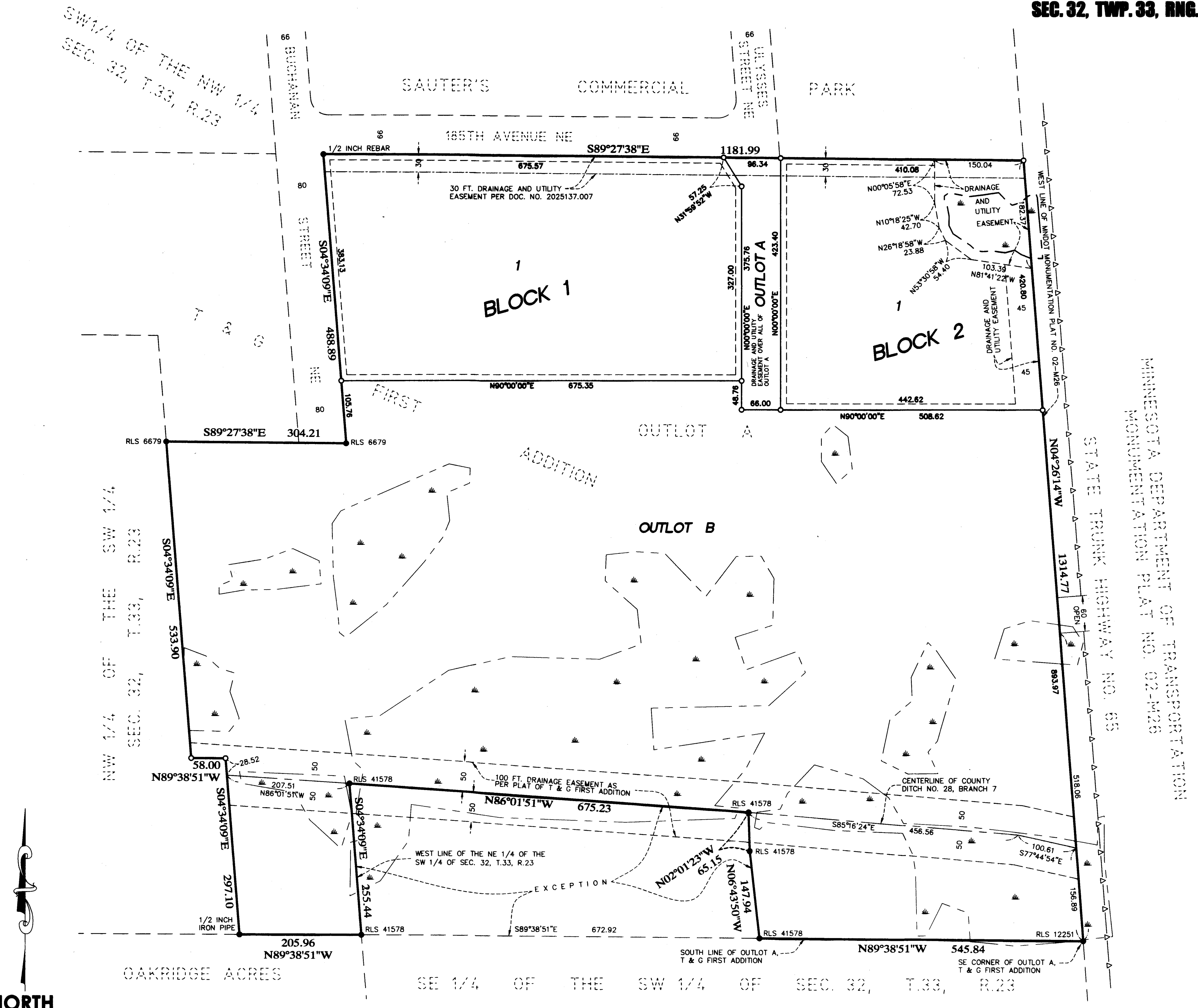
Pursuant to Minnesota Statutes, Section 505.021, Subd. 9, taxes payable in the year 2017 on the land hereinbefore described have been paid. Also, pursuant to Minnesota Statutes, Section 272.12, there are no delinquent taxes and transfer entered this 31 day of October, 2017.

Jonell Sawyer
Jonell Sawyer
Property Tax Administrator
By *Jonell Sawyer* Deputy

COUNTY RECORDER/REGISTRAR OF TITLES
COUNTY OF ANOKA, STATE OF MINNESOTA

I hereby certify that this plat of SAUTER DISTRICT PUD was filed in the office of the County Recorder/Registrar of Titles for public record on this 31 day of October, 2017, at 3:25 o'clock P.M. and was duly recorded as Document Number 2185068.001.

Jonell Sawyer
Jonell Sawyer
County Recorder/Registrar of Titles
By *Jonell Sawyer* Deputy



NORTH

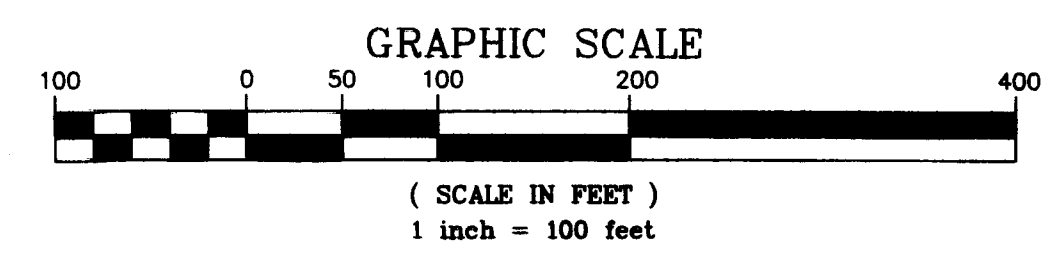
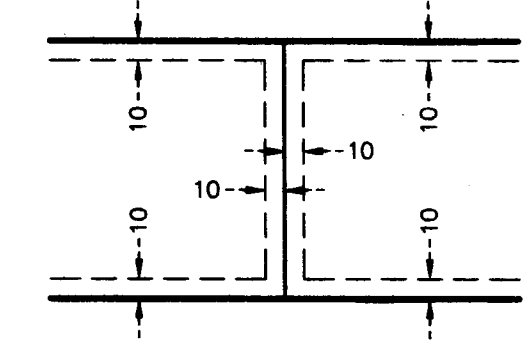
- DENOTES 1/2 INCH BY 14 INCH IRON PIPE MARKED BY RLS NO. 41578.
- DENOTES 1/2 INCH IRON PIPE FOUND AS NOTED.
- ▬ DENOTES WETLAND DELINEATED BY JACOBSON ENVIRONMENTAL IN 2017.
- ▬ DENOTES WETLAND DELINEATED PER PLAT OF T & G FIRST ADDITION.
- ▬ DENOTES ACCESS CONTROL PER MINNESOTA DEPARTMENT OF TRANSPORTATION MONUMENTATION PLAT NO. 02-M26

ALL MONUMENTS REQUIRED BY MINNESOTA STATUTE WILL BE SET WITHIN ONE YEAR OF THE RECORDING OF THIS PLAT, AND SHALL BE EVIDENCED BY A 1/2 INCH BY 14 INCH IRON PIPE MARKED BY RLS NO. 41578.

FOR THE PURPOSES OF THIS PLAT THE SOUTH LINE OF OUTLOT A, T & G FIRST ADDITION, ANOKA COUNTY, MINNESOTA IS ASSUMED TO HAVE A BEARING OF NORTH 89 DEGREES 38 MINUTES 51 SECONDS WEST.

EASEMENT DETAIL:

DRAINAGE AND UTILITY EASEMENTS ARE SHOWN THUS:



BEING 10 FEET IN WIDTH, ADJOINING ALL LOT LINES, UNLESS OTHERWISE SHOWN ON THIS PLAT.