

# SAUTER'S COMMERCIAL PARK THIRD ADDITION

City of East Bethel  
County of Anoka  
SEC. 32, TWP. 33, RNG. 23

KNOW ALL PERSONS BY THESE PRESENTS: That T & G Land, Inc., a Minnesota corporation, owner, and Community Pride Bank, a Minnesota banking corporation, mortgagee, of the following described property:

Outlot A, SAUTER'S COMMERCIAL PARK SECOND ADDITION, Anoka County, Minnesota.

Have caused the same to be surveyed and platted as SAUTER'S COMMERCIAL PARK THIRD ADDITION and do hereby dedicate to the public for public use the drainage and utility easements as shown on this plat.

In witness whereof said T & G Land, Inc., a Minnesota corporation, has caused these presents to be signed by its proper officer this 5<sup>th</sup> day of January, 2018.

T & G LAND, INC.

Thomas C. Sauter, President

STATE OF MINNESOTA  
COUNTY OF Anoka

This instrument was acknowledged before me this 9<sup>th</sup> day of January, 2018, by Thomas C. Sauter, President of T & G Land, Inc., a Minnesota corporation, on behalf of the corporation.

Lavae Mack  
Lavae Mack  
Notary Public, Anoka County, Minnesota  
My Commission Expires 1-31-2022

In witness whereof said Community Pride Bank, a Minnesota banking corporation, has caused these presents to be signed by its proper officer this 9<sup>th</sup> day of January, 2018.

COMMUNITY PRIDE BANK

Joseph D. Haag  
Joseph D. Haag, Vice President

STATE OF MINNESOTA  
COUNTY OF Anoka

This instrument was acknowledged before me this 9<sup>th</sup> day of January, 2018, by Joseph D. Haag, Vice President of Community Pride Bank, a Minnesota banking corporation, on behalf of the corporation.

Jennifer M. Moehlmann  
Jennifer M. Moehlmann  
Notary Public, Anoka County, Minnesota  
My Commission Expires 1-31-19

I, Jason E. Rud do hereby certify that this plat was prepared by me or under my direct supervision; that I am a duly Licensed Land Surveyor in the State of Minnesota; that this plat is a correct representation of the boundary survey, that all mathematical data and labels are correctly designated on this plat; that all monuments depicted on this plat have been, or will be correctly set within one year; that all water boundaries and wet lands, as defined in Minnesota Statutes, Section 505.01, Subd. 3, as of the date of this certificate are shown and labeled on this plat; and all public ways are shown and labeled on this plat.

Dated this 5<sup>th</sup> day of January, 2018.

Jason E. Rud  
Jason E. Rud, Licensed Land Surveyor  
Minnesota License No. 41578

STATE OF MINNESOTA  
COUNTY OF Anoka

This instrument was acknowledged before me this 8<sup>th</sup> day of January, 2018, by Jason E. Rud.

Lavae Mack  
Lavae Mack  
Notary Public, Anoka County, Minnesota  
My Commission Expires 1-31-2022

CITY COUNCIL, CITY OF EAST BETHEL, MINNESOTA

This plat of SAUTER'S COMMERCIAL PARK THIRD ADDITION was approved and accepted by the City Council of the City of East Bethel, Minnesota at a regular meeting thereof held this 3<sup>rd</sup> day of January, 2018, and said plat is in compliance with the provisions of Minnesota Statutes, Section 505.03, Subd. 2.

City Council, City of East Bethel, Minnesota

By Jack Davis Mayor By Jack Davis Clerk

COUNTY SURVEYOR

I hereby certify that in accordance with Minnesota Statutes, Section 505.021, Subd. 11, this plat has been reviewed and approved this 10<sup>th</sup> day of January, 2018.

Larry O. Holm by Charles F. Letzger, Deputy  
Larry O. Holm  
Anoka County Surveyor

COUNTY AUDITOR/TREASURER

Pursuant to Minnesota Statutes, Section 505.021, Subd. 9, taxes payable in the year 2018 on the land hereinbefore described have been paid. Also, pursuant to Minnesota Statutes, Section 272.12, there are no delinquent taxes and transfer entered this 10<sup>th</sup> day of January, 2018.

Jonell M. Sawyer  
Property Tax Administrator

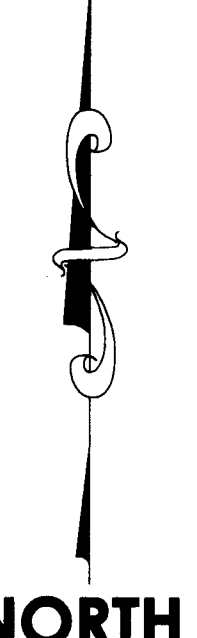
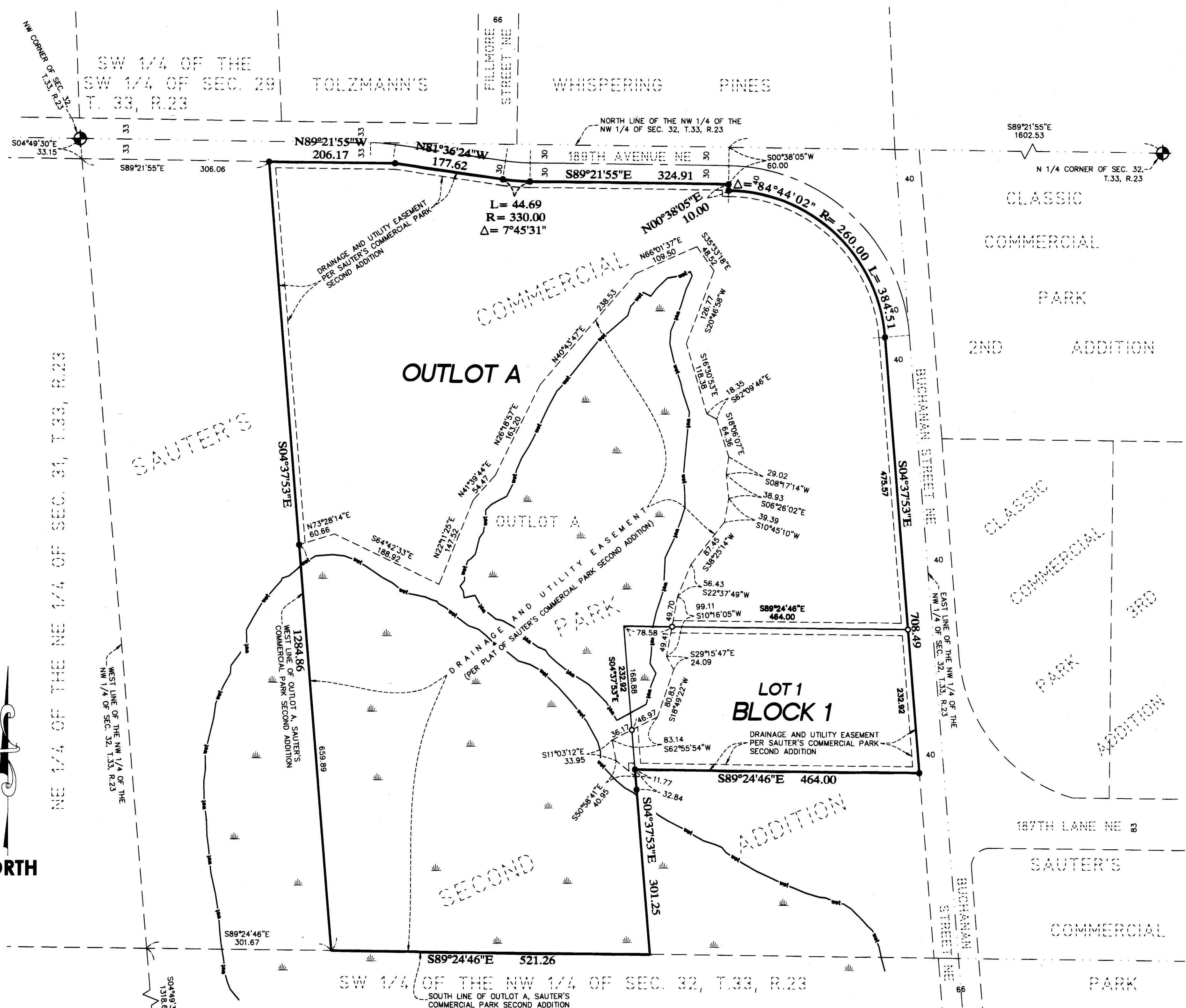
By Jonell M. Sawyer Deputy

COUNTY RECORDER/REGISTRAR OF TITLES  
COUNTY OF ANOKA, STATE OF MINNESOTA

I hereby certify that this plat of SAUTER'S COMMERCIAL PARK THIRD ADDITION was filed in the office of the County Recorder/Registrar of Titles for public record on this 10<sup>th</sup> day of January, 2018, at 1:04 o'clock P.M. and was duly recorded as Document Number 2190530.001

Jonell M. Sawyer  
County Recorder/Registrar of Titles

By Jonell M. Sawyer Deputy



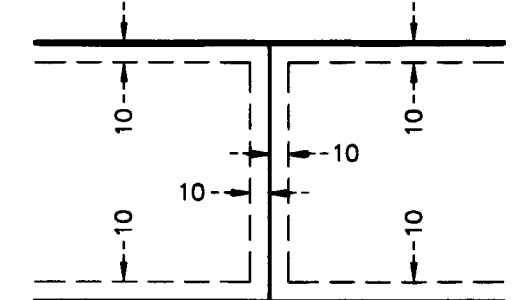
NORTH

- ⊕ DENOTES ANOKA COUNTY CAST IRON MONUMENT.
- DENOTES 1/2 INCH BY 14 INCH IRON PIPE MARKED BY RLS NO. 41578.
- DENOTES FOUND 1/2 INCH BY 14 INCH IRON PIPE MARKED BY RLS NO. 41578.
- ▨ DENOTES WETLAND DELINEATED BY JACOBSON ENVIRONMENTAL IN 2015.

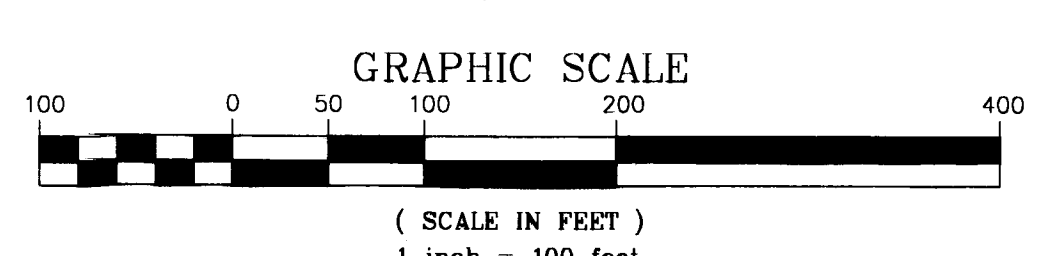
FOR THE PURPOSES OF THIS PLAT THE SOUTH LINE OF OUTLOT A, SAUTER'S COMMERCIAL PARK SECOND ADDITION IS ASSUMED TO HAVE A BEARING OF SOUTH 89 DEGREES 24 MINUTES 46 SECONDS EAST.

### EASEMENT DETAIL:

DRAINAGE AND UTILITY EASEMENTS ARE SHOWN THUS:



BEING 10 FEET IN WIDTH, ADJOINING ALL LOT LINES, UNLESS OTHERWISE SHOWN ON THIS PLAT.



GRAPHIC SCALE

(SCALE IN FEET)  
1 inch = 100 feet



#5600