

SAUTER'S COMMERCIAL PARK SECOND ADDITION

Book 79 Abst. Page 2
4/21/16 2134981.001
City of East Bethel
County of Anoka
SEC. 32, TWP. 33, R. 23

KNOW ALL PERSONS BY THESE PRESENTS: That T & G Land, Inc., a Minnesota corporation, owner, and Community Pride Bank, a Minnesota banking corporation, mortgagee, of the following described property:

The Northwest Quarter of the Northwest Quarter of Section 32, Township 33, Range 23, except that part platted as SAUTER'S COMMERCIAL PARK, Anoka County, Minnesota.

Have caused the same to be surveyed and platted as SAUTER'S COMMERCIAL PARK SECOND ADDITION and do hereby dedicate to the public for public use the public ways and the drainage and utility easements as shown on this plat.

In witness whereof said T & G Land, Inc., a Minnesota corporation, has caused these presents to be signed by its proper officer this 19th day of April, 2016.

T & G LAND, INC.

Thomas C. Sauter
Thomas C. Sauter, President

STATE OF MINNESOTA
COUNTY OF Anoka

This instrument was acknowledged before me this 19th day of April, 2016 by Thomas C. Sauter, President of T & G Land, Inc., a Minnesota corporation, on behalf of the corporation.

Nicole A. Johnson
Nicole A. Johnson
Notary Public, Anoka County, Minnesota
My Commission Expires January 31, 2020

In witness whereof said Community Pride Bank, a Minnesota banking corporation, has caused these presents to be signed by its proper officer this 19th day of April, 2016.

COMMUNITY PRIDE BANK

Joseph D. Hoag
Joseph D. Hoag, Vice President

STATE OF MINNESOTA
COUNTY OF Anoka

This instrument was acknowledged before me this 19th day of April, 2016 by Joseph D. Hoag, Vice President of Community Pride Bank, a Minnesota banking corporation, on behalf of the corporation.

Julie Alexander
Julie Alexander
Notary Public, Anoka County, Minnesota
My Commission Expires 1-21-20

I, Jason E. Rud do hereby certify that this plat was prepared by me or under my direct supervision; that I am a duly Licensed Land Surveyor in the State of Minnesota; that this plat is a correct representation of the boundary survey; that all mathematical data and labels are correctly designated on this plat; that all monuments depicted on this plat have been, or will be correctly set within one year; that all water boundaries and wet lands, as defined in Minnesota Statutes, Section 505.01, Subd. 3, as of the date of this certificate are shown and labeled on this plat; and all public ways are shown and labeled on this plat.

Dated this 18th day of April, 2016.

Jason E. Rud
Jason E. Rud, Licensed Land Surveyor
Minnesota License No. 41578

STATE OF MINNESOTA
COUNTY OF Anoka

This instrument was acknowledged before me this 18th day of April, 2016 by Jason E. Rud.

Nicole A. Johnson
Nicole A. Johnson
Notary Public, Anoka County, Minnesota
My Commission Expires January 31, 2020

CITY COUNCIL, CITY OF EAST BETHEL, MINNESOTA

This plat of SAUTER'S COMMERCIAL PARK SECOND ADDITION was approved and accepted by the City Council of the City of East Bethel, Minnesota at a regular meeting thereof held this 20th day of April, 2016 and said plat is in compliance with the provisions of Minnesota Statutes, Section 505.03, Subd. 2.

City Council, City of East Bethel, Minnesota

By *Jack Davis* Mayor By *Jack Davis* Clerk

COUNTY SURVEYOR

I hereby certify that in accordance with Minnesota Statutes, Section 505.021, Subd. 11, this plat has been reviewed and approved this 21st day of April, 2016.

Larry D. Holup
Larry D. Holup
Anoka County Surveyor

COUNTY AUDITOR/TREASURER

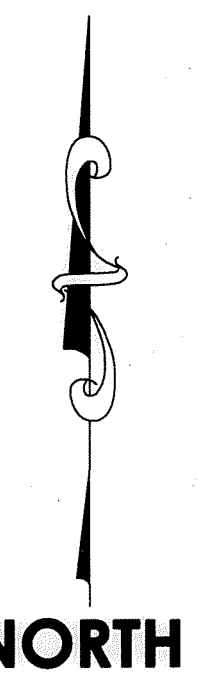
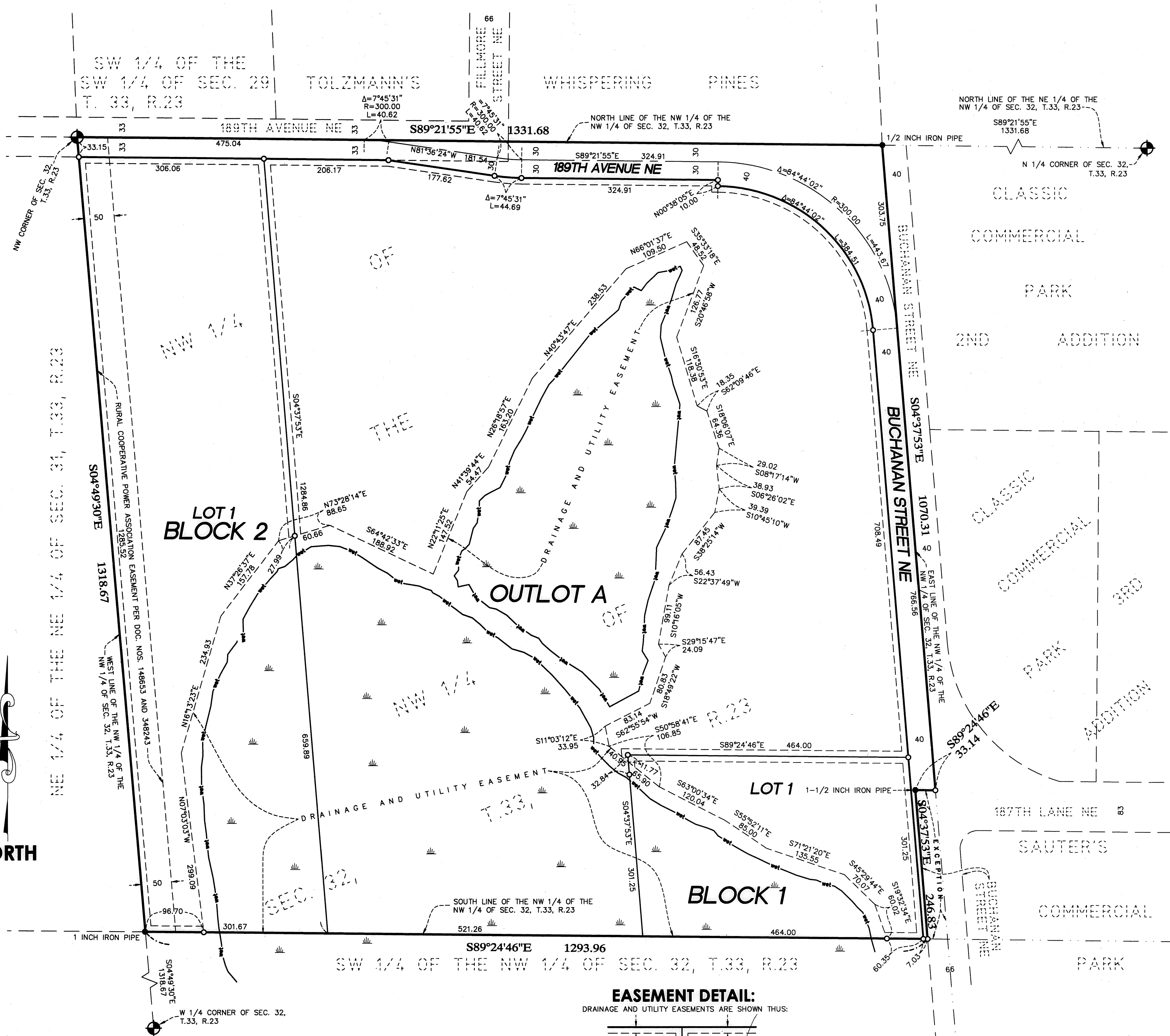
Pursuant to Minnesota Statutes, Section 505.021, Subd. 9, taxes payable in the year 2016 on the land hereinbefore described have been paid. Also, pursuant to Minnesota Statutes, Section 272.12, there are no delinquent taxes and transfer entered this 21st day of April, 2016.

Jonell M Sawyer
Jonell M Sawyer
Property Tax Administrator
By PSM Deputy

COUNTY RECORDER/REGISTRAR OF TITLES
COUNTY OF ANOKA, STATE OF MINNESOTA

I hereby certify that this plat of SAUTER'S COMMERCIAL PARK SECOND ADDITION was filed in the office of the County Recorder/Registrar of Titles for public record on this 21st day of April, 2016 at 10:46 o'clock A.M. and was duly recorded in Book 79 Abst Page 2 as Document Number 2134981.001

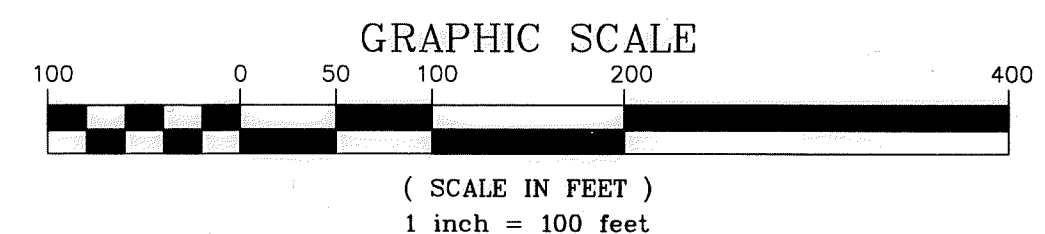
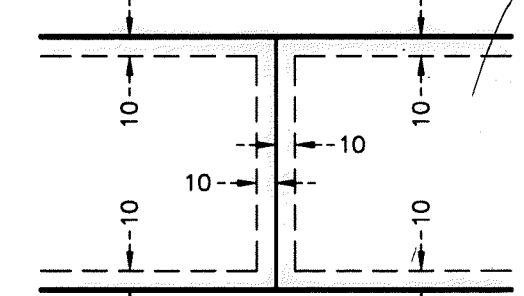
Jonell M Sawyer
Jonell M Sawyer
County Recorder/Registrar of Titles
By PSM Deputy



- DENOTES ANOKA COUNTY CAST IRON MONUMENT.
- DENOTES 1/2 INCH BY 14 INCH IRON PIPE MARKED BY RLS NO. 41578.
- DENOTES IRON PIPE FOUND AS NOTED.
- DENOTES WETLAND DELINEATED BY JACOBSON ENVIRONMENTAL IN 2015.

FOR THE PURPOSES OF THIS PLAT THE NORTH LINE OF NORTHWEST QUARTER OF THE NORTHWEST QUARTER OF SECTION 32, TOWNSHIP 33, RANGE 23, ANOKA COUNTY, MINNESOTA IS ASSUMED TO HAVE A BEARING OF SOUTH 89 DEGREES 21 MINUTES 55 SECONDS EAST.

EASEMENT DETAIL:
DRAINAGE AND UTILITY EASEMENTS ARE SHOWN THUS:



BEING 10 FEET IN WIDTH, ADJOINING ALL LOT LINES, UNLESS OTHERWISE SHOWN ON THIS PLAT.