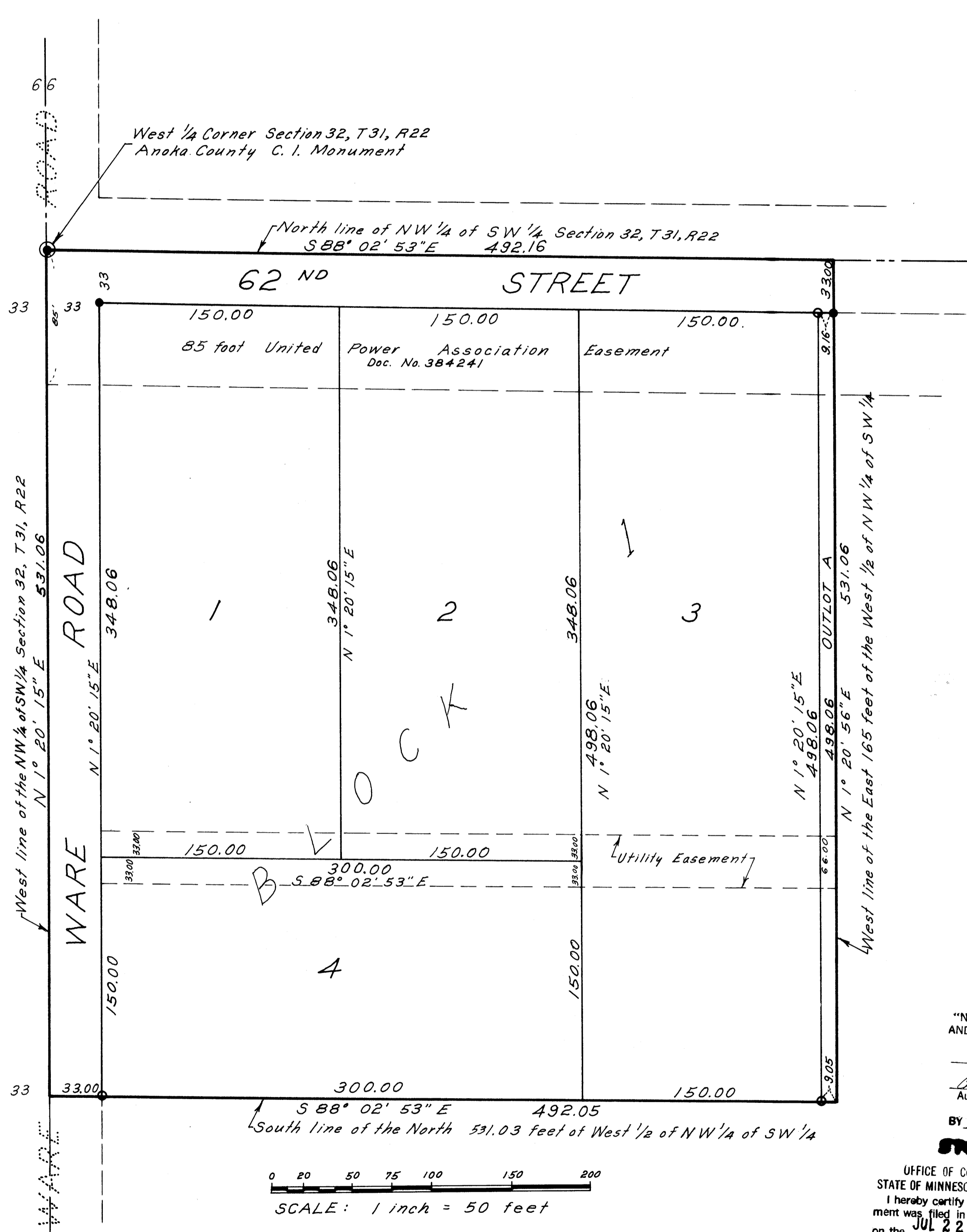


SCHEUNEMANN CORNER

CITY OF LINO LAKES ANOKA COUNTY, MINNESOTA



KNOW ALL PERSONS BY THESE PRESENTS: That W. James Scheunemann, single, owner and proprietor and Miles Finance Company, Inc., a Delaware corporation, mortgagee of the following described property, situated in the County of Anoka, State of Minnesota, to wit:

The North 531.03 feet of the West Half of the Northwest Quarter of the Southwest Quarter of Section 32, Township 31, Range 22, except the East 165 feet thereof, Anoka County,

have caused the same to be surveyed, platted and known as SCHEUNEMANN CORNER, and do hereby donate and dedicate to the public for public use forever the road and street as shown on the plat.

In witness whereof W. James Scheunemann, single, has hereunto set his hand this 10th day of APRIL, 1981.

W. James Scheunemann
W. James Scheunemann

In witness whereof Miles Finance Company, Inc., a Delaware corporation, has caused these presents to be signed by its proper officers this 13th day of APRIL, 1981.

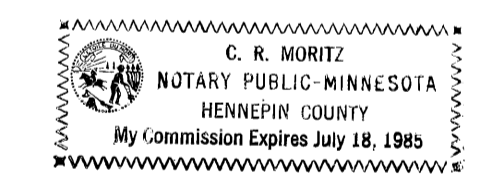
Richard L. Perry its Vice Pres. Edward Orwoll its Secy

State of Minnesota }
County of Ramsey } The foregoing instrument was acknowledged before me this 10th day of April, 1981 by W. James Scheunemann, single.

Francis R. Kvidera
Notary Public Ramsey County, Minnesota
My Commission Expires August 14, 1982

State of Minnesota }
County of Hennepin } The foregoing instrument was acknowledged before me this 14th day of APRIL, 1981 by RICHARD L. PERRY, SR. VICE PRES. and by E. EDWARD ORWOLL, SECY. of Miles Finance Company, Inc., a Delaware corporation, on behalf of the corporation.

C. R. Moritz
Notary Public Hennepin County, Minnesota
My Commission Expires



I, F. R. Kvidera do hereby certify that I have surveyed and platted the property described on the plat as SCHEUNEMANN CORNER, that this plat is a correct representation of said survey; that all distances are correctly shown on the plat in feet and hundredths of a foot; that all monuments for the guidance of future surveys have been correctly placed in the ground as shown on the plat; that all outside boundary lines are correctly designated on the plat and there are no wet lands or public highways to be designated on the plat other than as shown.

F. R. Kvidera
F. R. KVIDERA, Land Surveyor
Minnesota Registration No. 6469

State of Minnesota } S.S. The surveyors certificate was acknowledged before me this 10th day of April, 1981 by F. R. KVIDERA, Land Surveyor.

George J. Johnson
Notary Public Ramsey County, Minnesota
My Commission Expires October 30, 1982

Approved by the City Council of the City of Lino Lakes, Minnesota at a regular meeting held this 13th day of July, 1981.

CITY COUNCIL OF THE CITY OF LINO LAKES

Kenneth Hourley Mayor
Elsa L. Parker Clerk

Checked and approved this 22nd day of July, 1981.

Roland W. Anderson
Roland W. Anderson, County Surveyor
Anoka County, Minnesota

"NO DELINQUENT TAXES AND TRANSFER ENTERED"

July 22 1981
Charles R. Johnson
Auditor, Anoka County

BY J. P. Hennrich
Deputy

OFFICE OF COUNTY RECORDER
STATE OF MINNESOTA, COUNTY OF ANOKA
I hereby certify that the within instrument was filed in this office for record on the JUL 22 1981 A.D., 19:45 o'clock A.M., and was duly recorded in book 32 of PLATS, page 20

J. J. Nordahl
County Recorder
R. L. Holmness
Deputy

- Indicates iron monument found
- Indicates an iron monument with Minnesota Registration No. 6469