

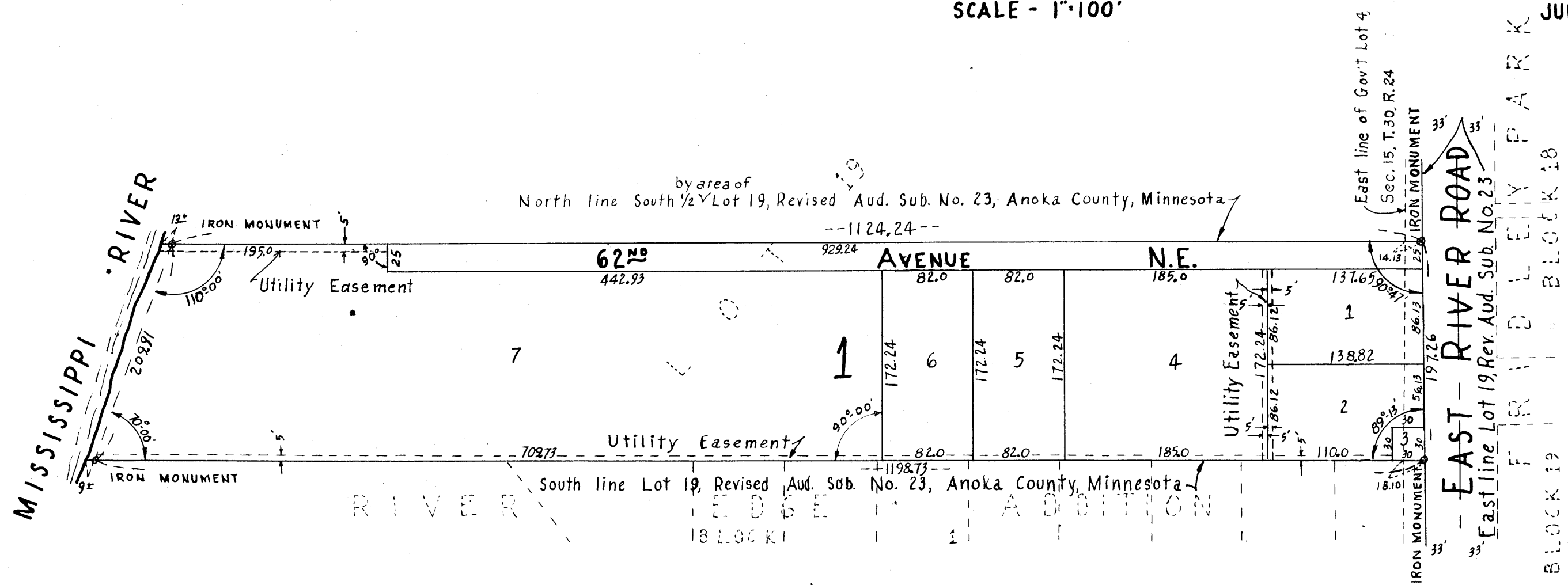
SCHULTZ'S ADDITION

VILLAGE OF FRIDLEY

CARTWRIGHT & OLSON
LAND SURVEYORS

SCALE - 1"=100'

JULY 1956



KNOW ALL MEN BY THESE PRESENTS: That we Frederick E. Schultz and Delores Z. Schultz, his wife, owners and proprietors of the following described property situate in the County of Anoka, State of Minnesota to-wit: The South one-half (1/2) of Lot nineteen (19), Revised Auditor's Subdivision Number twenty-three (23) according to the map or plat thereof on file and of record in the office of the Register of Deeds in and for Anoka County, Minnesota, have caused the same to be surveyed and platted as SCHULTZ'S ADDITION and do hereby donate and dedicate to the public for public use forever the Avenue as shown on the annexed plat, also subject to utility easements as shown on the annexed plat. In witness whereof we have hereunto set our hands and seals on this 10th day of August, 1956 A.D. 1956

In the presence of:
 } Marvin Brunson
 } Billie Wicklund } As to Frederick E. Schultz Frederick E. Schultz
 }
 } Marvin Brunson
 } Billie Wicklund } As to Delores Z. Schultz Delores Z. Schultz

We hereby certify that the Village Council of the Village of Fridley, Anoka County, Minnesota, duly accepted and approved the annexed plat of SCHULTZ'S ADDITION at a regular meeting thereof held this 8 day of Aug. A.D. 1956

Village of Fridley, Anoka County, Minnesota

J. E. Geig
 Mayor
Ernest Madsen
 Village Manager

STATE OF MINNESOTA } S.S.
 COUNTY OF ANOKA }

On this 10th day of August A.D. 1956 before me, a Notary Public, within and for said County and State personally appeared Frederick E. Schultz and Delores Z. Schultz, his wife, to me personally known to be the persons described in and who executed the foregoing instrument and they affirm and acknowledge that they executed the same as their own free act and deed.

Ernest Madsen
 Notary Public, Anoka County, Minnesota
 ERNEST MADSEN
 Notary Public, Anoka County, Minn.
 My Commission Expires July 26, 1960.

I hereby certify that I have surveyed and platted the land described in the dedication on this plat as SCHULTZ'S ADDITION; that this plat is a correct representation of said survey; that all distances are correctly shown on said plat in figures denoting feet and decimals of a foot; that the monuments for the guidance of future surveys have been correctly placed in the ground as shown on said plat; that the topography of the land is correctly shown on said plat; that the outside boundaries of the land are correctly designated on said plat; and that there are no wet lands or public highways to be designated on said plat other than are shown thereon.

Harvey C. Cartwright
 Registered Land Surveyor, Minnesota Reg. No. 1983

174744
 OFFICE OF REGISTER OF DEEDS } S.S.
 STATE OF MINNESOTA, COUNTY OF ANOKA }
 I hereby certify that the within instrument was filed in this office for record on the 10th day of August A.D. 1956 at 4 o'clock P.M., and was duly recorded in book Q of PLATS, page 21.
Julius W. Wassner
 Register of Deeds



HEREBY CERTIFY THAT TAXES FOR THE YEAR 1955 ON THE LANDS DESCRIBED WITHIN ARE PAID
Walter R. Powers
 County Treasurer
 W. H. Kocan, Deputy

TAXES PAID
 This 10 day of Aug 1956
Samuel H. Campbell
 Auditor, Anoka County, Minn.
 by Jean Louette, Deputy

STATE OF MINNESOTA } S.S.
 COUNTY OF HENNEPIN }
 Above certificate subscribed and sworn to before me, a Notary Public within and for said County and State on this 3rd day of August A.D. 1956

Norman C. Hovim
 Notary Public, Hennepin County, Minnesota
 My Commission expires Oct. 14, 1961