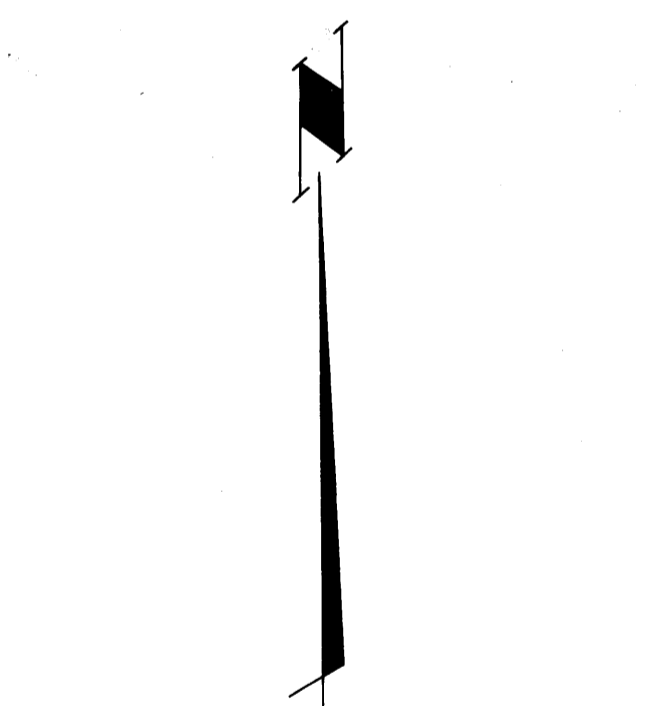
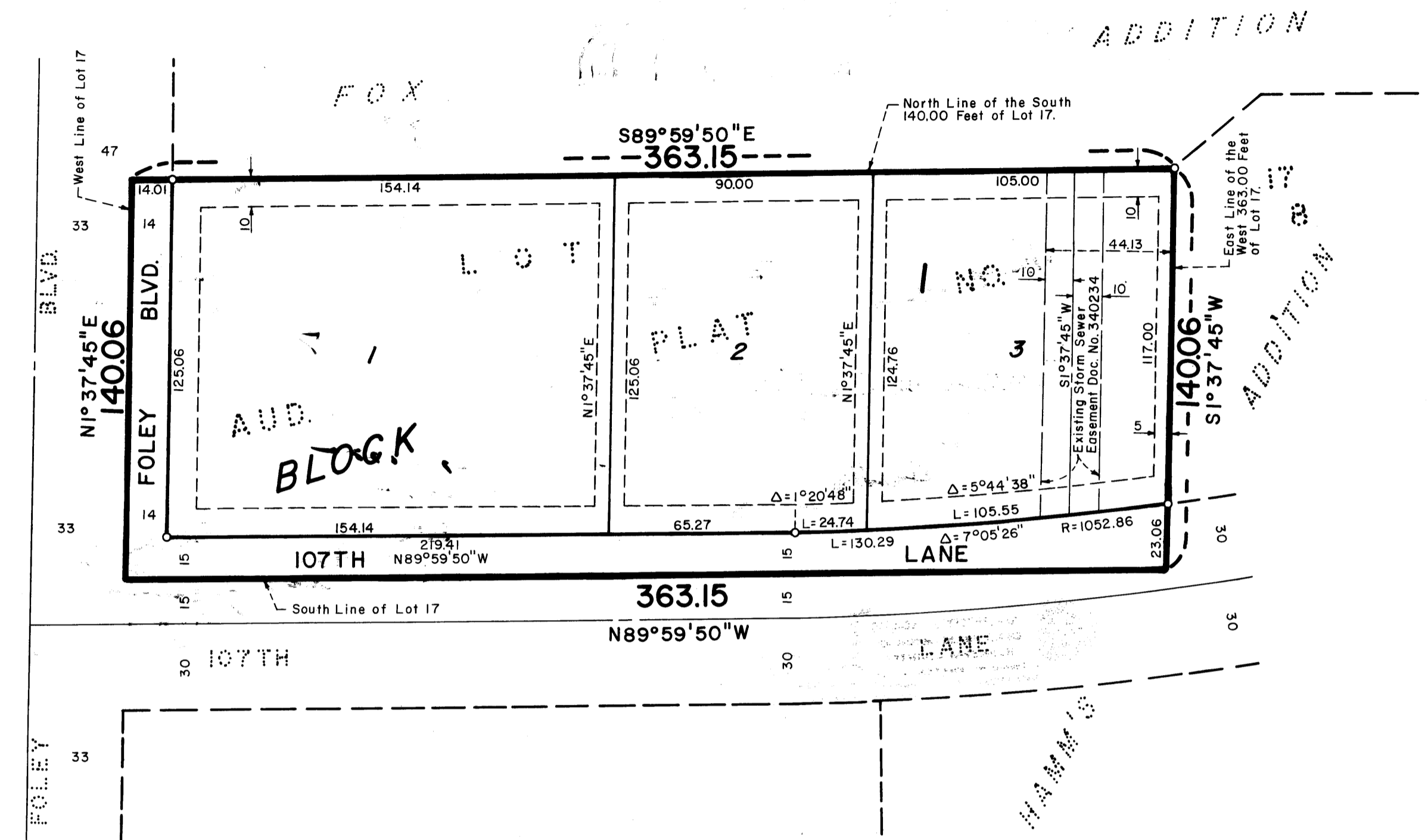
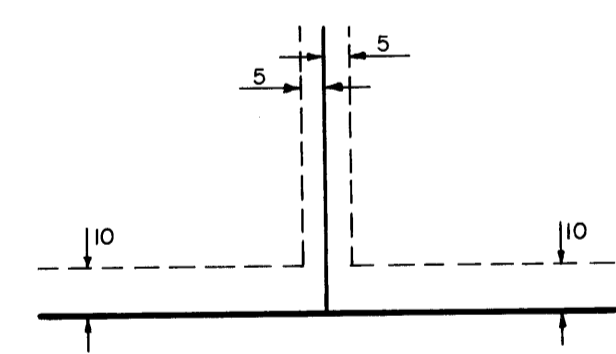


SELIX ADDITION

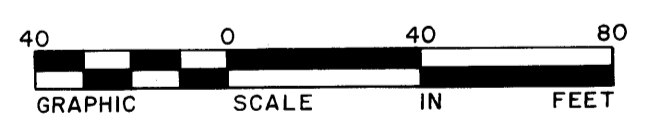
City of Coon Rapids
County of Anoka



DRAINAGE AND UTILITY EASEMENTS ARE SHOWN THUS:



Being 5 feet in width, unless otherwise indicated, and adjoining lot lines, and 10 feet in width, and adjoining street lines, as shown on the plat.



SCALE: 1 INCH = 40 FEET
O DENOTES IRON MONUMENT

The South Line of Lot 17 is Assumed to Have a Bearing of N89°59'50\"/>

Hakanson Anderson Associates, Inc.
engineers and surveyors

ADDITION

KNOW ALL MEN BY THESE PRESENTS: That Leora M. Selix, a widow, ^{a single person} owner and proprietor of the following described property situated in the County of Anoka, State of Minnesota, to wit:

The south 140 feet of the west 363 feet of Lot 17, Auditor's Plat No. 8, Anoka County, Minnesota.

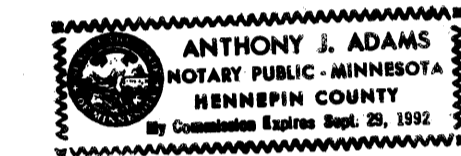
Has caused the same to be surveyed and platted as SELIX ADDITION and does hereby donate and dedicate to the public for public use forever the lane, boulevard, and drainage and utility easements as shown on this plat.

In witness whereof said Leora M. Selix, a widow, ^{a single person} has hereunto set her hand this 12 day of May, 1987.

SIGNED:
Leora M. Selix
Leora M. Selix

STATE OF MINNESOTA
COUNTY OF Anoka

The foregoing instrument was acknowledged before me this 12 day of May, 1987 by Leora M. Selix, ^{a single person} a widow.



James M. Winter
Notary Public Hennepin County, Minnesota
My Commission expires Sept 23, 1992

I hereby certify that I have surveyed and platted the property described on this plat as SELIX ADDITION; that this plat is a correct representation of said survey; that all distances are correctly shown on said plat; that the outside boundary lines are correctly designated on said plat; and that there are not wet lands or public highways to be designated on said plat, other than shown thereon.

James M. Winter
James M. Winter, Land Surveyor, Minn. Reg. No. 12263

STATE OF MINNESOTA
COUNTY OF Anoka

The foregoing instrument was acknowledged before me this 9TH day of MARCH, 1987, by James M. Winter, Land Surveyor.



Larry K. Affield
Notary Public Hennepin County, Minnesota
My Commission expires NOVEMBER 13, 1990

CITY OF COON RAPIDS

This plat of SELIX ADDITION was approved by the Planning and Zoning Commission of the City of Coon Rapids at a regular meeting thereof held this 17th day of 00700001, 1985.

BY: Orvan M. Thorne Chairman BY: Shirley J. Hoff Clerk

CITY OF COON RAPIDS

We hereby certify that the City Council of the City of Coon Rapids, Anoka County, Minnesota, duly accepted and approved the plat of SELIX ADDITION at a regular meeting thereof held this 24th day of FEBRUARY, 1987. If applicable, the written comments and recommendations of the Commissioner of Transportation and the County Highway Engineer have been received by the City or the prescribed 30 day period has elapsed without receipt of such comments and recommendations, as provided by Minn. Statutes, Section 505.03, Subd. 2.

BY: Robert B. Lewis Mayor BY: Betty Backes, Conc Clerk

Checked and approved this 12th day of May, 1987.

"NO DELINQUENT TAXES AND TRANSFER ENTERED"

May 12th 1987
Charles R. Lepore
Auditor, Anoka County
Annella Schultz
Recorder

Merlyn D. Anderson
Merlyn Anderson, Anoka County Surveyor

I HEREBY CERTIFY THAT THE TAXES PAYABLE IN THE YEAR 87 ON THE LANDS DESCRIBED WITHIN ARE PAID

Donald C. Bailey
Anoka County Treasurer

J. Henry - Deputy

158915
OFFICE OF COUNTY RECORDER
STATE OF MINNESOTA, COUNTY OF ANOKA
I hereby certify that the within instrument was filed in this office for record on the MAY 12 1987 A.D., 1987 at 4:00 o'clock P.M. and was duly recorded in book 87 of Plats page 39
Paul J. Orndahl
County Recorder
By Sue Kay Ge

