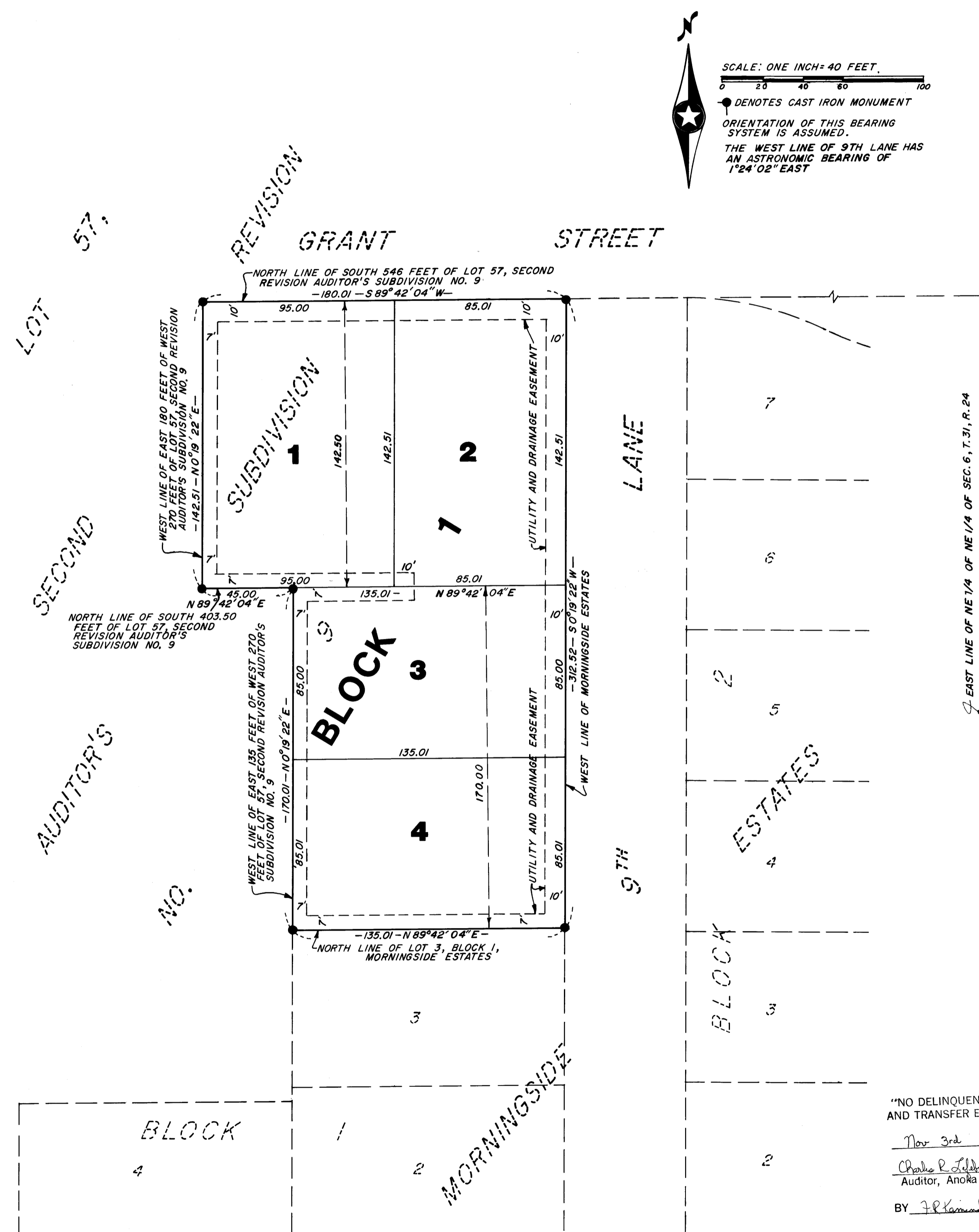


# SEMRAU'S PARKVIEW ESTATES



SCALE: ONE INCH=40 FEET.

0 20 40 60 80 100

• DENOTES CAST IRON MONUMENT

ORIENTATION OF THIS BEARING SYSTEM IS ASSUMED.

THE WEST LINE OF 9TH LANE HAS AN ASTRONOMIC BEARING OF 124° 02' EAST

KNOW ALL MEN BY THESE PRESENTS: THAT, SYLVESTER M. SEMRAU AND GOLDIE E. SEMRAU, HIS WIFE, OWNERS AND PROPRIETORS, OF THE FOLLOWING DESCRIBED PROPERTY SITUATED IN THE STATE OF MINNESOTA AND THE COUNTY OF ANOKA TO-WIT: THE NORTH 142.50 FEET OF THE SOUTH 546.00 FEET OF THE EAST 180.00 FEET OF THE WEST 270.00 FEET AND THE NORTH 170.00 FEET OF THE SOUTH 403.50 FEET OF THE EAST 135.00 FEET OF THE WEST 270.00 FEET, ALL IN LOT 57, SECOND REVISION AUDITOR'S SUBDIVISION NUMBER 9, ACCORDING TO THE MAP OR PLAT THEREOF ON FILE AND OF RECORD IN THE OFFICE OF THE COUNTY RECORDER IN AND FOR ANOKA COUNTY, MINNESOTA.

HAVE CAUSED THE SAME TO BE SURVEYED AND PLATTED AS SEMRAU'S PARKVIEW ESTATES AND DO HEREBY DEDICATE THE UTILITY AND DRAINAGE EASEMENTS AS SHOWN ON THE PLAT. IN WITNESS WHEREOF SAID SYLVESTER M. SEMRAU AND GOLDIE E. SEMRAU, HIS WIFE, HAVE HEREUNTO SET THEIR HANDS AND SEALS THIS 18<sup>TH</sup> DAY OF July 1983.

*Sylvester M. Semrau*  
SYLVESTER M. SEMRAU  
*Goldie E. Semrau*  
GOLDIE E. SEMRAU

STATE OF MINNESOTA )  
COUNTY OF ANOKA ) ss

THE FOREGOING INSTRUMENT WAS ACKNOWLEDGED BEFORE ME THIS 18<sup>TH</sup> DAY OF July 1983 BY SYLVESTER M. SEMRAU AND GOLDIE E. SEMRAU, HIS WIFE.

LARRY D. HOIUM  
NOTARY PUBLIC - MINNESOTA  
ANOKA COUNTY  
My Commission Expires Sept. 24, 1988

*Larry D. Hoium*  
NOTARY PUBLIC, ANOKA COUNTY, MINNESOTA

MY COMMISSION EXPIRES SEPT. 24, 1988

I HEREBY CERTIFY THAT I HAVE SURVEYED AND PLATTED THE LAND DESCRIBED IN THE DEDICATION ON THE PLAT AS SEMRAU'S PARKVIEW ESTATES: THAT THE PLAT IS A CORRECT REPRESENTATION OF SAID SURVEY; THAT ALL DISTANCES ARE CORRECTLY SHOWN ON SAID PLAT IN FEET AND HUNDRETHS OF A FOOT; THAT THE MONUMENTS HAVE BEEN CORRECTLY PLACED IN THE GROUND AS SHOWN; THAT THE OUTSIDE BOUNDARIES ARE CORRECTLY DESIGNATED ON SAID PLAT; AND THAT THERE ARE NO WET LANDS OR PUBLIC HIGHWAYS TO BE DESIGNATED ON SAID PLAT OTHER THAN ARE SHOWN THEREON.

*M. C. Hoium*  
REGISTERED LAND SURVEYOR - MINN. REG. NO. 4427

STATE OF MINNESOTA )  
COUNTY OF ANOKA ) ss

THIS SURVEYOR'S CERTIFICATE WAS ACKNOWLEDGED BEFORE ME, A NOTARY PUBLIC, THIS 15<sup>TH</sup> DAY OF July 1983 BY N. C. HOIUM, LAND SURVEYOR.

PAMELA L. FREDRICK  
NOTARY PUBLIC - MINNESOTA  
ANOKA COUNTY  
My Commission Expires Sept. 24, 1988

*Pamela L. Fredrick*  
NOTARY PUBLIC, ANOKA COUNTY, MINNESOTA

MY COMMISSION EXPIRES SEPT. 24, 1988

APPROVED BY THE PLANNING COMMISSION OF THE CITY OF ANOKA, MINNESOTA THIS 5<sup>th</sup> DAY OF July 1983.

SIGNED *Leo T. Foley* CHAIRMAN

ATTEST *Robert W. Kirchner* SECRETARY

APPROVED BY THE CITY COUNCIL OF THE CITY OF ANOKA, MINNESOTA THIS 1<sup>st</sup> DAY OF August 1983.

SIGNED *Lorraine Hostetter* MAYOR OF ANOKA MINN.

ATTEST *Jim Dalgan* CITY CLERK

CHECKED AND APPROVED THIS 3<sup>rd</sup> DAY OF November 1983.

*Roland W. Anderson*  
COUNTY SURVEYOR, ANOKA COUNTY, MINNESOTA

"NO DELINQUENT TAXES AND TRANSFER ENTERED"

Nov 3<sup>rd</sup> 1983  
*Choke R. Johnson*  
Auditor, Anoka County  
By *J.P. Kainchi* Deputy

I HEREBY CERTIFY THAT THE TAXES PAYABLE IN THE YEAR 1983 ON THE LANDS DESCRIBED WITHIN ARE PAID  
*Donald C. Bailey by J. Williams*  
Anoka County Treasurer

628129  
OFFICE OF COUNTY RECORDER  
STATE OF MINNESOTA, COUNTY OF ANOKA  
I hereby certify that the within instrument was filed in this office on the NOV 3 1983 A.D., 1983 at 2:55 o'clock P.M., and was duly recorded in book 336 of Plans page 27

*Fred Amundson*  
County Recorder  
By *J.P. Kainchi* Deputy

**N.C. HOIUM & ASSOCIATES, INC.**  
**Land Surveyors**