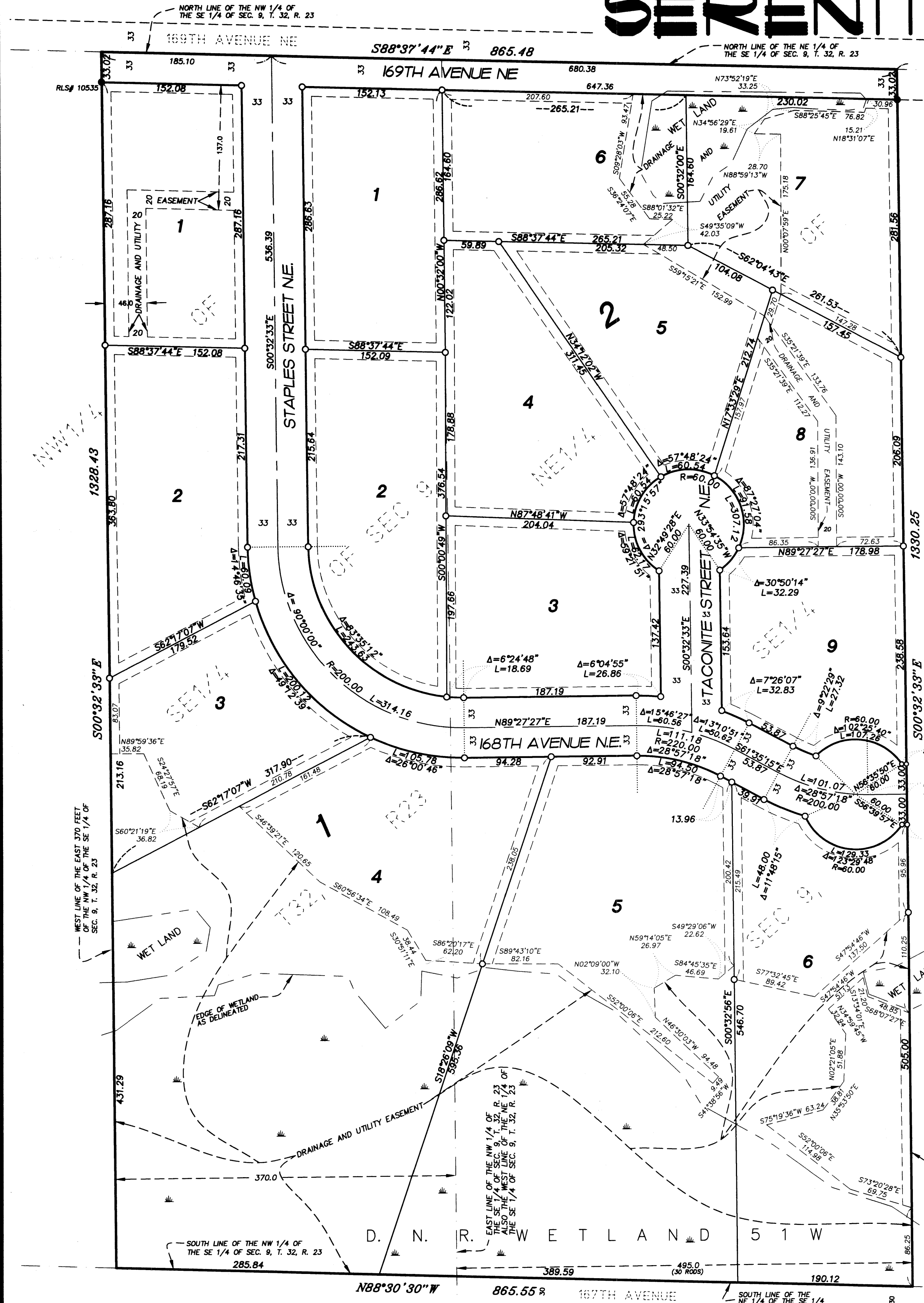


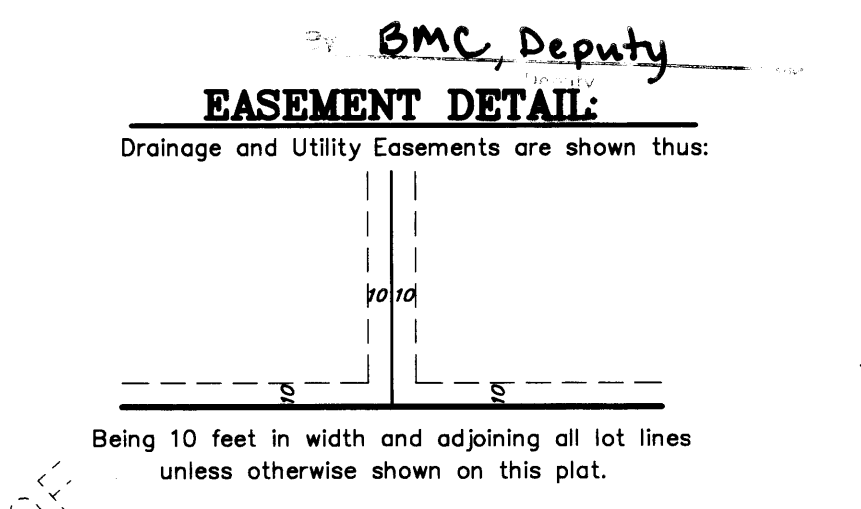
SERENITY MEADOWS



1981369.001 Abstract

OFFICE OF COUNTY RECORDER
STATE OF MINNESOTA, COUNTY OF ANOKA
I hereby certify that the within instrument was filed in this office to record on the 18 Jan A.D., 2006 at 12:31 o'clock P.M., and was duly recorded in book 71 Abstract Page 10

Maureen J. Devine
County Recorder



KNOW ALL MEN BY THESE PRESENTS: That FS Development Inc., A Minnesota corporation, fee owner, and Washington County Bank, National Association, a national banking association, mortgagee, of the following described property situated in the State of Minnesota, County of Anoka, to wit:

The East 370 feet of the Northwest Quarter of the Southeast Quarter of Section 9, Township 32, Range 23, Anoka County, Minnesota.

AND

The West 30 rods of the Northeast Quarter of the Southeast Quarter of Section 9, Township 32, Range 23, Anoka County, Minnesota.

Have caused the same to be surveyed and platted as SERENITY MEADOWS and do hereby donate and dedicate to the public for public use forever the streets and avenues and the drainage and utility easements as shown on this plat.

In witness whereof said FS Development Inc., a Minnesota corporation, has caused these presents to be signed by its proper officer this 13 day of January 2006

Bruce Westman
Bruce Westman, President

STATE OF MINNESOTA
COUNTY OF Anoka
The foregoing instrument was acknowledged before me this 13th day of January, 2006, by Bruce Westman as President of FS Development Inc., a Minnesota corporation, on behalf of the corporation.

John A. Rengo
Notary Public, Anoka County, Minnesota
My Commission Expires January 31, 2010

In witness whereof said Washington County Bank, National Association, a national banking association, has caused these presents to be signed by its proper officer this 13th day of JANUARY, 2006

Scott Johnson
Scott Johnson, Vice President

STATE OF MINNESOTA
COUNTY OF Anoka
The foregoing instrument was acknowledged before me this 13th day of January, 2006, by Scott Johnson as Vice President of Washington County Bank, National Association, a national banking association on behalf of the association.

Jason M. Krull
Notary Public, Anoka County, Minnesota
My Commission Expires January 31, 2008

I hereby certify that I have surveyed and platted the property described on this plat as SERENITY MEADOWS; that this plat is a correct representation of said survey, that all distances are correctly shown on the plat in feet and hundredths of a foot; that all monuments have been correctly placed in the ground as shown; that the outside boundary lines are correctly designated on said plat and that there are no wet lands as defined in Minnesota Statutes, Sec. 505.02 Subd. 1 or public highways to be designated other than as shown on said plat.

Jason E. Rud
Jason E. Rud, Land Surveyor
Minnesota License No. 41578.

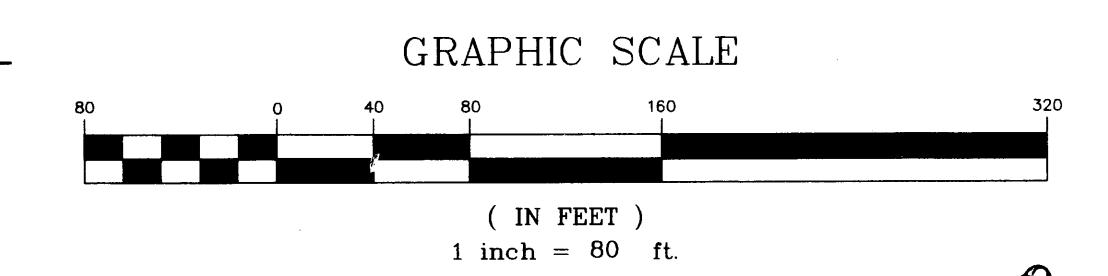
STATE OF MINNESOTA
COUNTY OF Anoka
The foregoing Surveyor's Certificate was acknowledged before me this 15th day of JANUARY, 2006, by Jason E. Rud, Land Surveyor.

Eric R. Vicaryous
Notary Public, Anoka County, Minnesota
My Commission Expires Jan. 31st, 2007

This plat of SERENITY MEADOWS was approved by the City Council of the City of Ham Lake, Minnesota at a regular meeting thereof held this 19th day of December, 2005, and if applicable, the written comments and recommendations of the Commissioner of Transportation and the County Highway Engineer have been received by the City or the prescribed 30 day period has elapsed without receipt of such comments and recommendations, as provided by Minnesota Statutes, Section 505.03, Subd. 2.

By [Signature] Mayor By Blaine A. Nivala Clerk
This plat has been checked and approved this 18th day of JANUARY, 2006

Larry D. Hoiland
Larry D. Hoiland
Anoka County Surveyor



I HEREBY CERTIFY THAT THE CURRENT AND DELINQUENT TAXES ON THE LANDS DESCRIBED WITHIN ARE PAID AND THE TAXPAYER IS ENTERED

Jan 18, 2006
MAGNETIC FIELD PROPERTY TAX ADMINISTRATOR
S. Culver

- Denotes Set Iron Monument marked RLS# 41578
- Denotes Found Iron Monument Labeled as Noted
- Denotes Wet Land
- ▭ Denotes Edge of Wet Land

E. G. RUD & SONS, INC.
Land Surveyors

\$56.00