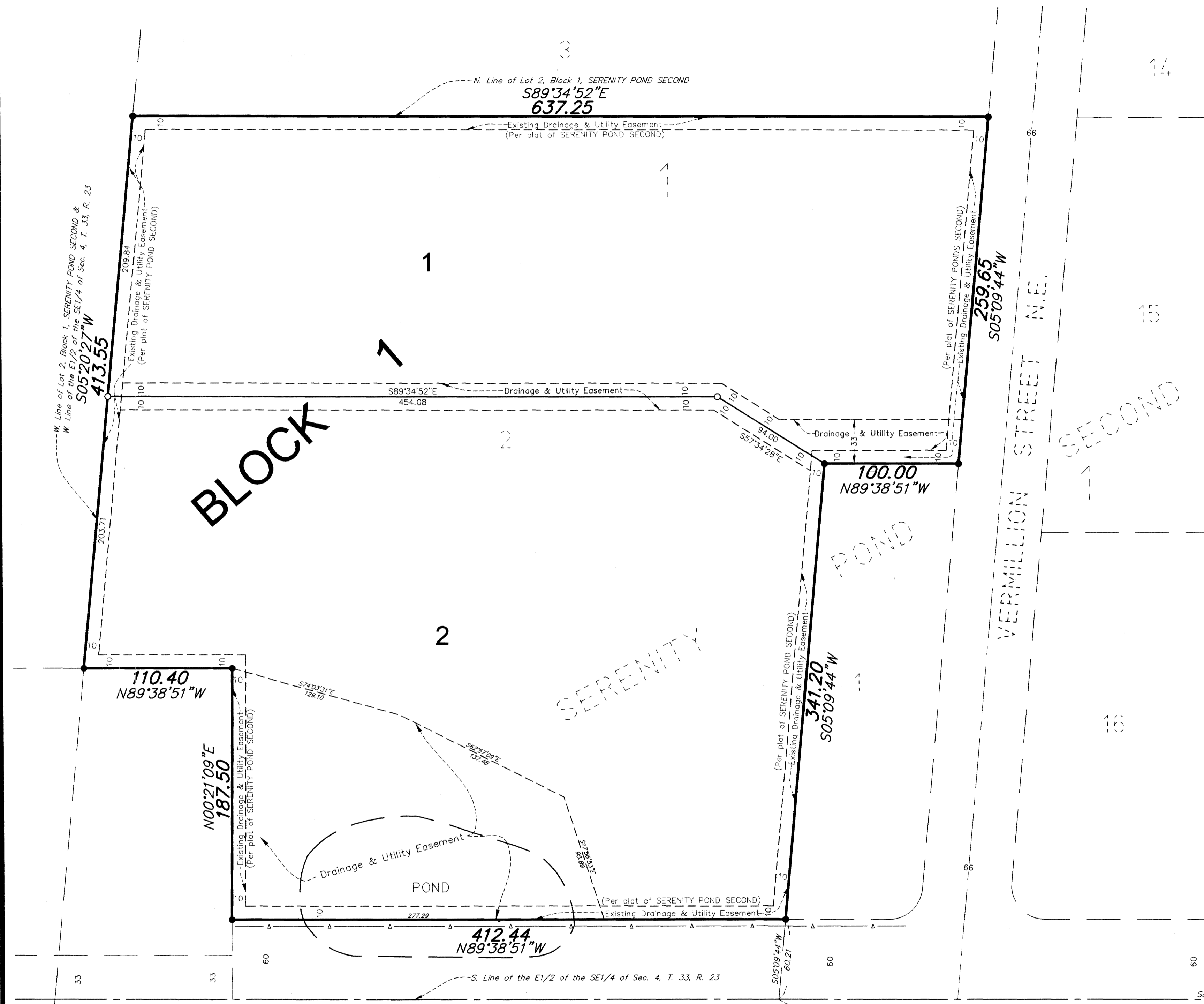


SERENITY POND THIRD

BK 71 of A 105 + p 18
 City of East Bethel
 County of Anoka
 Sec. 4, Twp. 33, Rge. 23

OFFICIAL STAT



KNOW ALL PERSONS BY THESE PRESENTS: That Nicholas Dubovich and Jennifer Dubovich, husband and wife, owners and proprietors of the following described property situated in the County of Anoka, State of Minnesota, to-wit:

Lot 2, Block 1, SERENITY POND SECOND, according to the recorded plat thereof, Anoka County, Minnesota.

Have caused the same to be surveyed and platted as SERENITY POND THIRD and do hereby donate and dedicate to the public for public use forever the drainage and utility easements as shown on the plat. In witness whereof said Nicholas Dubovich and Jennifer Dubovich have hereunto set their hands this 16th day of February, 2006.

SIGNED:
Nicholas Dubovich
 Nicholas Dubovich
Jennifer Dubovich
 Jennifer Dubovich

STATE OF MINNESOTA) The foregoing instrument was acknowledged before me this 16th day of February
 COUNTY OF Anoka, 2006, by Nicholas Dubovich and Jennifer Dubovich, husband and wife.

DEBRA J. HOLM
 NOTARY PUBLIC - MINNESOTA
 ANOKA COUNTY
 My Commission Expires Jan 31, 2009

Debra J. Holm
 Notary Public, Anoka County, Minnesota
 My Commission expires 01-31-09

I hereby certify that I have surveyed and platted the land described in the dedication on this plat as SERENITY POND THIRD; that this plat is a correct representation of said survey; that all distances are correctly shown on said plat in feet and hundredths of a foot; that all monuments have been correctly placed in the ground as shown, or shall be correctly placed in the ground within one year after the recording date of this plat; that the outside boundaries are correctly designated on said plat, and that there are no wetlands, in accordance with M.S. 505.02 Subdivision 1, or public highways to be designated on said plat other than as shown thereon.

Jeffrey N. Caine
 Jeffrey N. Caine, Registered Land Surveyor
 Minnesota License No. 12251

STATE OF MINNESOTA) The surveyor's certificate was acknowledged before me a Notary Public, this 14th day of
 COUNTY OF Anoka, February, 2006, by Jeffrey N. Caine, Land Surveyor.

DEBRA J. HOLM
 NOTARY PUBLIC - MINNESOTA
 ANOKA COUNTY
 My Commission Expires Jan 31, 2009

Jeffrey N. Caine
 Notary Public, Anoka County, Minnesota
 My Commission expires 01-31-10

CITY OF EAST BETHEL

We hereby certify that the City Council of the City of East Bethel, Anoka County, Minnesota, duly accepted and approved the plat of SERENITY POND THIRD at a regular meeting held this 15th day of February, 2006. If applicable, the written comments and recommendations of the Commissioner of Transportation and the County Highway Engineer have been received by the city or the prescribed 30 day period has elapsed without receipt of such comments and recommendations as provided by Minn. Statutes, Section 505.03, Subd. 2.

By *[Signature]* Mayor By *[Signature]* Clerk

Checked and approved this 8th day of March, 2006.

By Larry O. Hoium
 Anoka County Surveyor
 by Charles F. Sutzger, Deputy

- DENOTES FOUND MONUMENT.
- DENOTES A MONUMENT REQUIRED BY MINNESOTA STATE STATUTE WHICH WILL BE SET WITHIN ONE YEAR OF THE RECORDING DATE OF THIS PLAT, AND SHALL BE EVIDENCED BY A 1/2" INCH BY 14 INCH IRON PIPE MARKED BY RLS 12251.
- ⊙ DENOTES ANOKA COUNTY MONUMENT.

▲ ▲ ▲ ▲ ▲ DENOTES RIGHT OF ACCESS DEDICATED TO ANOKA COUNTY PER PLAT OF SERENITY POND SECOND.

FOR THE PURPOSES OF THIS PLAT, THE NORTH LINE OF LOT 2, BLOCK 1, SERENITY POND SECOND IS ASSUMED TO BEAR S89°34'52"E.

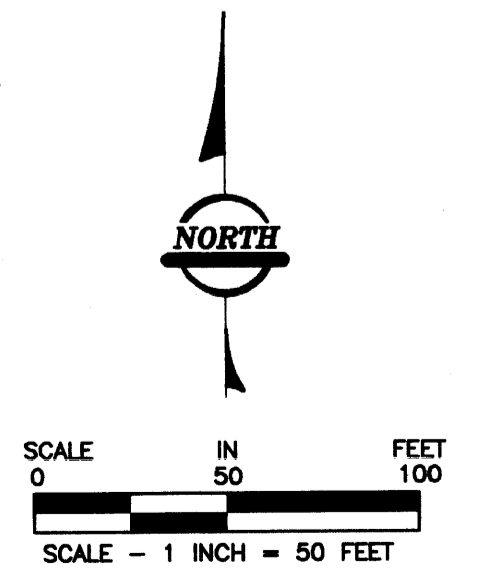
221ST AVENUE N.E. (COUNTY ROAD NO. 74)

1982 (81-003) Abstract
 STATE OF MINNESOTA, COUNTY OF ANOKA
 I hereby certify that the within instrument was filed in this office for record on the 8 March 2006 at 1:53 o'clock P.M., and was duly recorded in book 71 Most page 18
Maureen J. Devine
 County Recorder
 By MLF
 Deputy

\$56.00

Anoka County Monument at the SE. Cor. of the SE1/4 of Sec. 4, T. 33, R. 23

I HEREBY CERTIFY THAT THE CURRENT AND DELINQUENT TAXES ON THE LANDS DESCRIBED WITHIN ARE PAID AND THE TRANSFER IS ENTERED
Maureen J. Devine
 PROPERTY TAX ADMINISTRATOR
 BY *[Signature]*
 DEPUTY PROPERTY TAX ADMINISTRATOR



RLK INCORPORATED

NEWS EAST BETHEL