

MIDWEST  
Land Surveyors & Civil Engineers, Inc.

OFFICIAL PLAT

# SHADE TREE COURT

Bk. 70 of Abst pg 37  
CITY OF BLAINE  
COUNTY OF ANOKA  
SEC. 5, T31, R23.

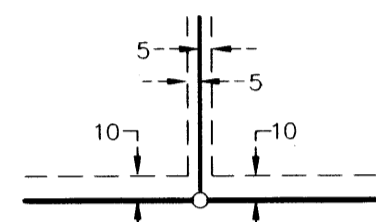
**NOTES:**

FOR THE PURPOSES OF THIS PLAT THE SOUTH LINE OF LOT 13, BLOCK 11, RIPPBERGER'S THIRD ADDITION IS ASSUMED TO HAVE A BEARING OF N89°54'29"E.

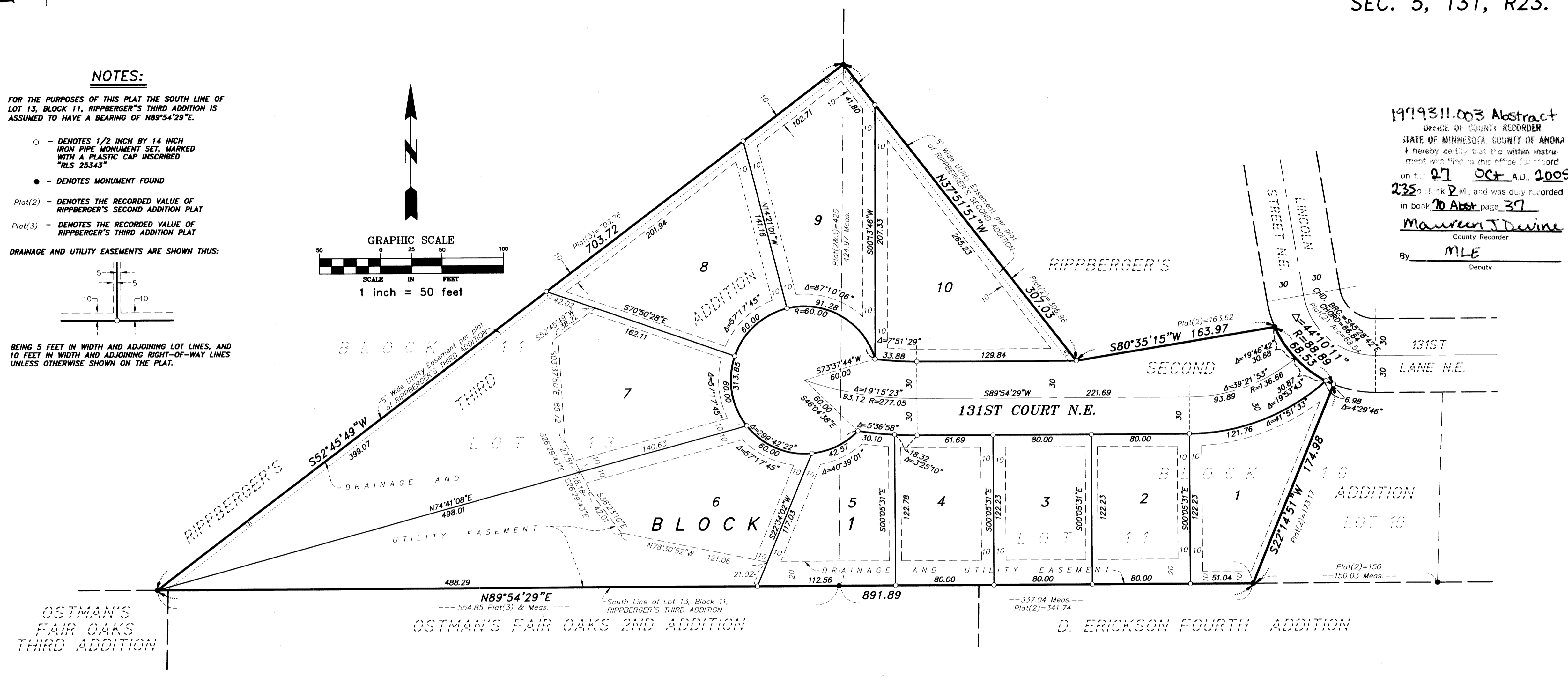
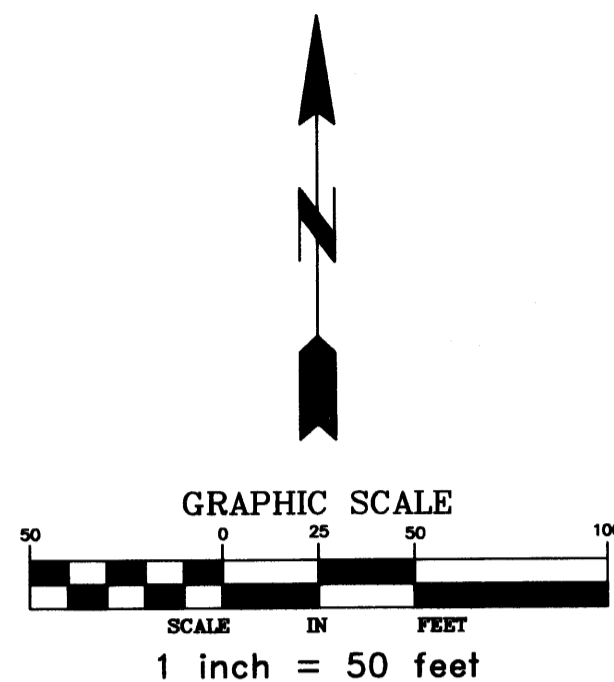
- - DENOTES 1/2 INCH BY 14 INCH IRON PIPE MONUMENT SET, MARKED WITH A PLASTIC CAP INSCRIBED "RLS 25343"
- - DENOTES MONUMENT FOUND

Plat(2) - DENOTES THE RECORDED VALUE OF RIPPBERGER'S SECOND ADDITION PLAT  
Plat(3) - DENOTES THE RECORDED VALUE OF RIPPBERGER'S THIRD ADDITION PLAT

DRAINAGE AND UTILITY EASEMENTS ARE SHOWN THUS:



BEING 5 FEET IN WIDTH AND ADJOINING LOT LINES, AND 10 FEET IN WIDTH AND ADJOINING RIGHT-OF-WAY LINES UNLESS OTHERWISE SHOWN ON THE PLAT.



1979311.003 Abstract  
OFFICE OF COUNTY RECORDER  
STATE OF MINNESOTA, COUNTY OF ANOKA  
I hereby certify that the within instrument was filed in this office to record on the 27 Oct A.D. 2005  
235 of Book P.M., and was duly recorded in book 70 Abstract page 37  
Maureen J. Devine  
County Recorder  
By MLE  
Deputy

KNOW ALL PERSONS BY THESE PRESENTS: That Shade Tree Communities, L.L.C., a Minnesota Limited Liability Company, fee owner and 1st Regents Bank, a Minnesota corporation, mortgagee, of the following described property situated in the County of Anoka, State of Minnesota to wit:

Lot 11, Block 10, RIPPBERGER'S SECOND ADDITION, according to the recorded plat thereof, Anoka County, Minnesota.  
AND  
Lot 13, Block 11, RIPPBERGER'S THIRD ADDITION, according to the recorded plat thereof, Anoka County Minnesota.

Have caused the same to be surveyed and platted as SHADE TREE COURT and do hereby donate and dedicate to the public for the public use forever the court and the easements for drainage and utility purposes.

In witness whereof said Shade Tree Communities, L.L.C., a Minnesota Limited Liability Company, has caused these presents to be signed by its proper officer this 11<sup>th</sup> day of OCTOBER, 2005.

SHADE TREE COMMUNITIES, L.L.C.  
BY: Mark L. Strandlund  
Mark L. Strandlund, President

STATE OF MINNESOTA  
COUNTY OF Anoka  
The foregoing instrument was acknowledged before me this 11<sup>th</sup> day of October, 2005, by Mark L. Strandlund as President of Shade Tree Communities, L.L.C., a Minnesota Limited Liability Company, on behalf of the company.

Susan J. Henderson  
Notary Public, Anoka County, Minnesota  
My commission expires 11/31/10

In witness whereof said 1st Regents Bank, a Minnesota corporation, has caused these presents to be signed by its proper officer this 11<sup>th</sup> day of OCTOBER, 2005.

1ST REGENTS BANK  
BY: Thomas L. Lund  
Thomas L. Lund, Senior Vice President

STATE OF MINNESOTA  
COUNTY OF Anoka  
The foregoing instrument was acknowledged before me this 11<sup>th</sup> day of October, 2005, by Thomas L. Lund, as Senior Vice President of 1st Regents Bank, a Minnesota corporation, on behalf of the corporation.

Susan J. Henderson  
Notary Public, Anoka County, Minnesota  
My commission expires 11/31/10

I hereby certify that I have surveyed and platted the property described on this plat as SHADE TREE COURT; that this plat is a correct representation of the survey; that all distances are correctly shown on the plat in feet and hundredths of a foot; that all monuments will be correctly placed in the ground as shown within one year after the recording date of this plat; that the outside boundary lines are correctly designated on the plat and that there are no wet lands as defined in M.S. 505.02, Subd. 1 or public highways to be designated other than as shown.

James F. Napier  
James F. Napier, Land Surveyor  
Minnesota License No. 25343

State of Minnesota  
County of Anoka

The foregoing surveyor's certificate was acknowledged before me this 10<sup>th</sup> day of October, 2005, by James E. Napier, Land Surveyor, Minnesota License No. 25343.

Blake L. Rivard  
Notary Public  
Anoka County, Minnesota.  
My commission expires: 1/31/05

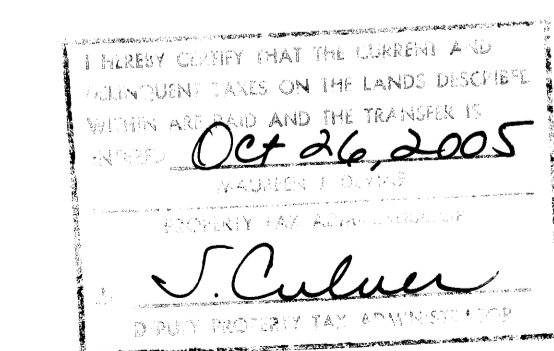
BLAKE L. RIVARD SR  
NOTARY PUBLIC - MINNESOTA  
My Commission Expires Jan. 31, 2005

The foregoing plat of SHADE TREE COURT was approved and accepted by the City Council of Blaine, Minnesota, at a regular meeting thereof held this 10<sup>th</sup> day of October, 2005. If applicable, the written comments and recommendations of the Commissioner of Transportation and the County Highway Engineer have been received by the City or the prescribed 30 day period has elapsed without receipt of such comments and recommendations, as provided by Minnesota Statutes Section 505.03, Subd. 2.

CITY COUNCIL OF BLAINE, MINNESOTA  
BY: Ronald R. Wood Mayor  
BY: Ronald R. Wood City Manager

Checked and approved this 26<sup>th</sup> day of OCTOBER, 2005.

Terry D. ...  
Anoka County Surveyor



\$56.00