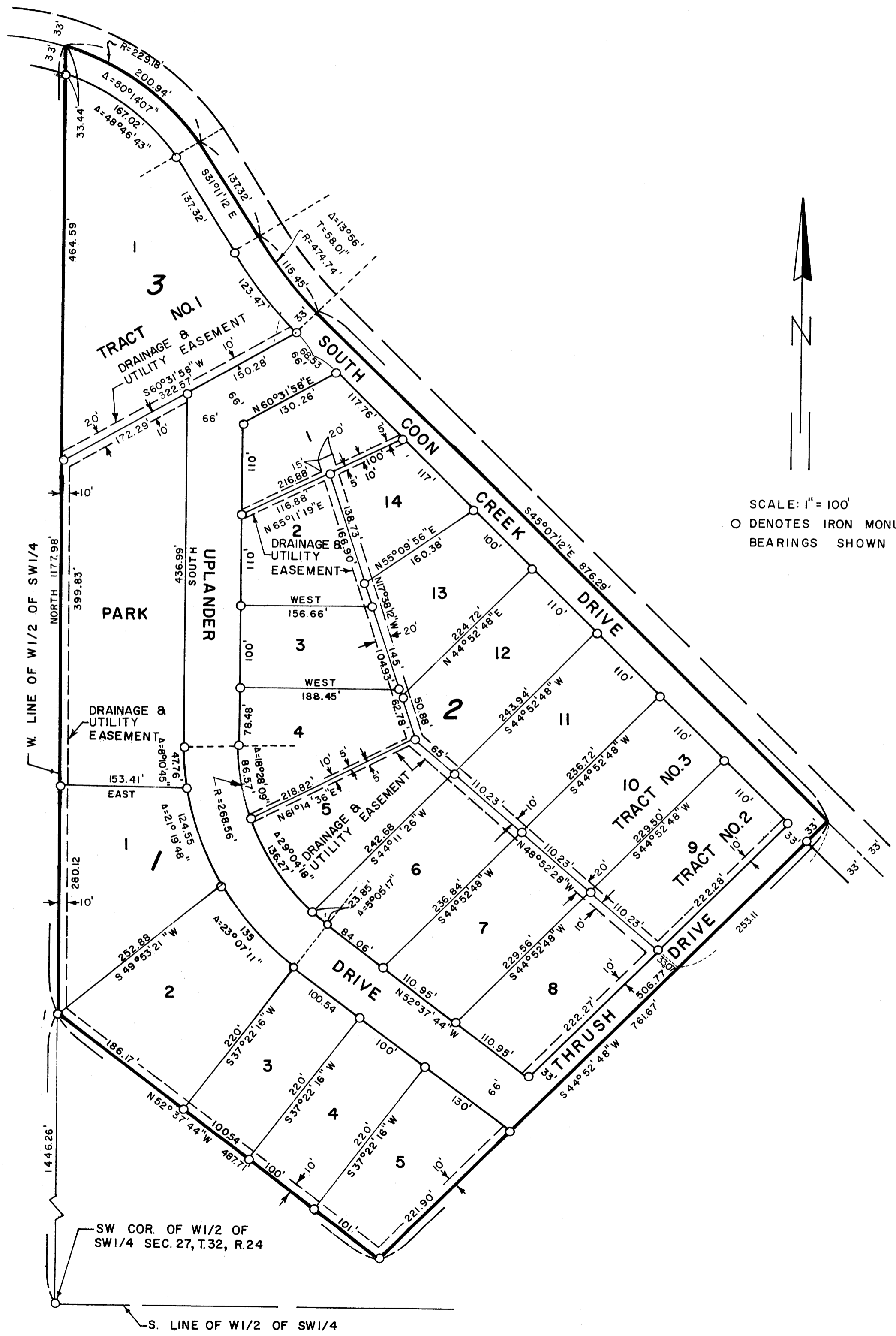


SHADY KNOLL ADDITION

TOWNSHIP OF GROW — COUNTY OF ANOKA



SCALE: 1" = 100'
 O DENOTES IRON MONUMENTS
 BEARINGS SHOWN ARE ASSUMED

I do hereby certify that I have surveyed and platted the property described on this plat as SHADY KNOLL ADDITION; that this is a correct representation of said survey; that all distances are correctly shown on said plat in feet and decimals of a foot; that all monuments have been correctly placed in the ground as shown on the plat; that the outside boundary lines are correctly designated on the plat; and there are no wet lands or public highways to be designated on said plat other than shown thereon.

STATE OF MINNESOTA)
 COUNTY OF ANOKA) (SS

Surveyor Le Roy Winner
 Minnesota Registration No. 4987

Above certificate subscribed and sworn to before me, a Notary Public within and for said County and State on this 22nd day of April 1971 A.D.

John J. Bond
 Notary Public, Anoka County, Minnesota
 My Commission expires Dec. 12 - 1974

The annexed plat of SHADY KNOLL ADDITION was approved by the Town Board of the Township of Grow at a regular meeting held this 13th day of April 1971 A.D.

James Cappley
 Chairman of Town Board
Mary S. West
 Clerk of Town Board

Recommended for approval this 27th day of April 1971 A.D.

E. J. Lundheim
 County Highway Engineer, Anoka County, Minnesota

This plat was approved as to form and execution on this 5th day of August 1971 A.D.

Robert Johnson
 County Attorney, Anoka County, Minnesota

This plat was checked and approved on this 27th day of April 1971 A.D.

Robert W. Anderson
 County Surveyor, Anoka County, Minnesota

This plat was approved and accepted by the Board of County Commissioners of the County of Anoka, State of Minnesota, at a regular meeting held this 27th day of April 1971 A.D.

Albert G. Rendish
 Chairman
Charles P. Lefebvre
 County Auditor

LEROY H. WINNER & ASSOC., INC. - LAND SURVEYORS

