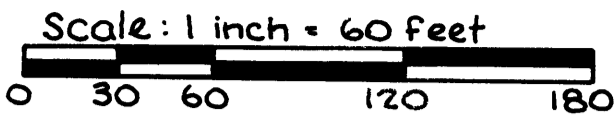


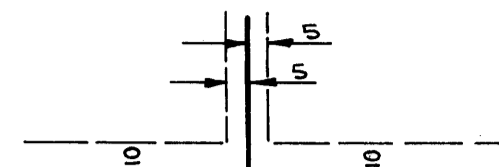
SHARONS 1ST ADDITION

CITY OF COON RAPIDS,
COUNTY OF ANOKA

LOT SURVEYS COMPANY, INC.
LAND SURVEYORS



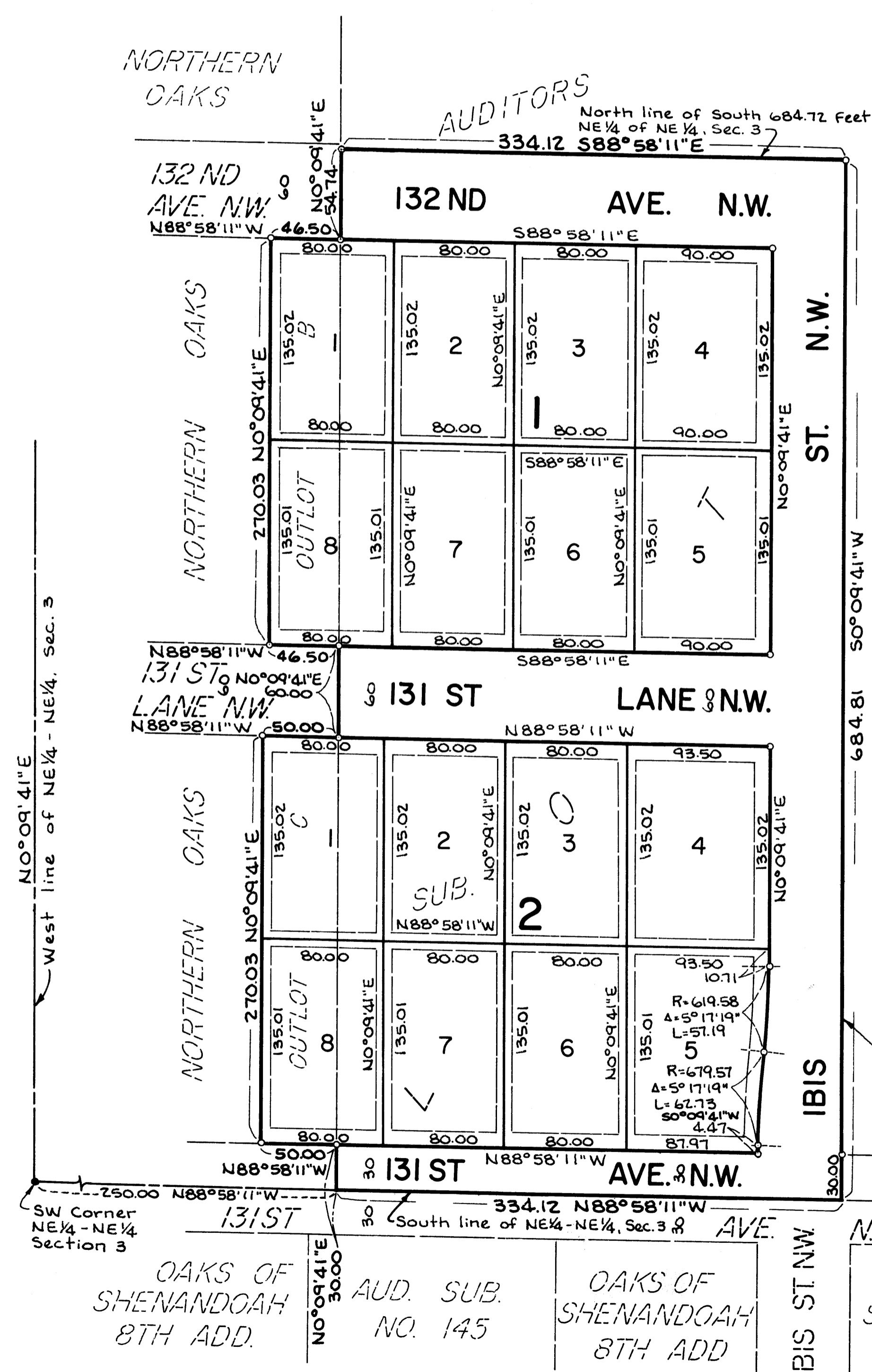
Utility & Drainage Easements are shown thus



o Denotes Iron Monument

Orientation of this bearing system is assumed.

Being 5 feet in width, unless otherwise indicated, and adjoining lot lines, and 10 feet in width and adjoining street lines, as shown on the plat.



729159
OFFICE OF COUNTY RECORDER
STATE OF MINNESOTA, COUNTY OF ANOKA
I hereby certify that the within instrument was filed in this office for record on the 21st day of August, 1986, A.D., 1986 at 3:20 o'clock P.M., and was duly recorded in book 36 of Page 53

By Ted J. Campbell
County Recorder
By 91.8. Hollemen
Deputy

NO. 145
I HEREBY CERTIFY THAT THE TAXES PAYABLE IN THE YEAR 1986 ON THE LANDS DESCRIBED WITHIN ARE PAID
Domestic Agency Submissions
Anoka County Treasurer

"NO DELINQUENT TAXES AND TRANSFER ENTERED"
Oct 7 1986
Charles R. Lewis
Auditor, Anoka County
By J. Blum
Deputy

KNOW ALL MEN BY THESE PRESENTS: That Gordon V. Clemens and Shirley J. Clemens, his wife, owners and proprietors, of the following described property situate in the County of Anoka, State of Minnesota, to-wit:
Outlot B and Outlot C, NORTHERN OAKS, according to the plat thereof on file and of record in the office of the County Recorder in and for said County and Jeffrey D. Olson and Rebecca L. Olson, his wife, owners and proprietors, and First Bank Coon Rapids, a Minnesota corporation, mortgagee, of the following described property situate in the County of Anoka, State of Minnesota, to-wit:
That part of Lot 8, Auditor's Subdivision No. 145, Anoka County, Minnesota described as that part of the West 584.08 feet of the South 684.72 feet of the Northeast Quarter of the Northeast Quarter of Section 3, Township 31, Range 24 which lies East of Lot 7, Auditor's Subdivision No. 145, Anoka County, Minnesota. According to the plat thereof on file and of record in the office of the County Recorder in and for said County
Have caused the same to be surveyed and platted as SHARONS 1ST ADDITION and do hereby donate and dedicate to the public for public use forever the Avenues, Street, Lane and easements for utility and drainage purposes as shown on the plat. In witness whereof said Gordon V. Clemens and Shirley J. Clemens, his wife, have hereunto set their hands this 21st day of August, 1986. In witness whereof said Jeffrey D. Olson and Rebecca L. Olson, his wife, have hereunto set their hands this 26th day of August, 1986. In witness whereof said First Bank Coon Rapids, a Minnesota corporation, has caused these presents to be signed by its proper officers this 21st day of August, 1986.

Signed:
Gordon V. Clemens
Gordon V. Clemens
Shirley J. Clemens
Shirley J. Clemens
Jeffrey D. Olson
Jeffrey D. Olson
Rebecca L. Olson
Rebecca L. Olson

FIRST BANK COON RAPIDS
Gary D. Lance its Vice President
Marjorie Christensen its Asst. Vice Pres.
State of Minnesota
County of Anoka
The foregoing instrument was acknowledged before me this 26th day of August, 1986, by Gordon V. Clemens and Shirley J. Clemens, his wife.

CHARLES M. SEYKORA
NOTARY PUBLIC - MINNESOTA
HENNEPIN COUNTY
My Commission Expires Oct. 2, 1991

State of Minnesota
County of Anoka
The foregoing instrument was acknowledged before me this 26th day of August, 1986, by Jeffrey D. Olson and Rebecca L. Olson, his wife.

CHARLES M. SEYKORA
NOTARY PUBLIC - MINNESOTA
HENNEPIN COUNTY
My Commission Expires Oct. 2, 1991

State of Minnesota
County of Hennepin
The foregoing instrument was acknowledged before me this 21st day of August, 1986, by GARY D. LANCE its VICE PRESIDENT and MARJORIE CHRISTENSEN its ASST. VICE PRES. of First Bank Coon Rapids, a Minnesota corporation, on behalf of said corporation.

CHARLES M. SEYKORA
NOTARY PUBLIC - MINNESOTA
HENNEPIN COUNTY
My Commission Expires Sept. 12, 1989

I hereby certify that I have surveyed and platted the property described on this plat as SHARONS 1ST ADDITION; that this plat is a correct representation of said survey; that the distances are correctly shown on said plat in feet and hundredths of a foot; that all monuments have been correctly placed in the ground as shown on said plat; that the outside boundary lines are correctly designated on said plat; and that there are no wetlands to be designated on said plat.

Raymond A. Prasch
Raymond A. Prasch, Registered Land Surveyor
Minnesota Registration No. 6743

State of Minnesota
County of Hennepin
The foregoing instrument was acknowledged before me this 13th day of AUGUST, 1986, by Raymond A. Prasch, Registered Land Surveyor.

MILTON E. HYLAND
NOTARY PUBLIC - MINNESOTA
HENNEPIN COUNTY
My Commission Expires Nov. 19, 1987

The plat of SHARONS 1ST ADDITION was approved by the Planning and Zoning Commission of the City of Coon Rapids at a regular meeting thereof held this 19th day of JUNE, 1986. By Walter D. Waide Vice Chairman

We hereby certify that the City Council of the City of Coon Rapids, Anoka County, Minnesota, duly accepted and approved the plat of SHARONS 1ST ADDITION at a regular meeting thereof held this 22nd day of JULY, 1986. If applicable, the written comments and recommendations of the Commissioner of Transportation and the County Highway Engineer have been received by the City or the prescribed 30 day period has elapsed without of such comments and recommendations as provided by Minnesota Statutes, Section 505.03, Subd. 2.

By Robert B. Lewis Mayor
Checked and approved this 7th day of October, 1986
Betty Backes, CMC Clerk
Edward W. Anderson
Anoka County Surveyor