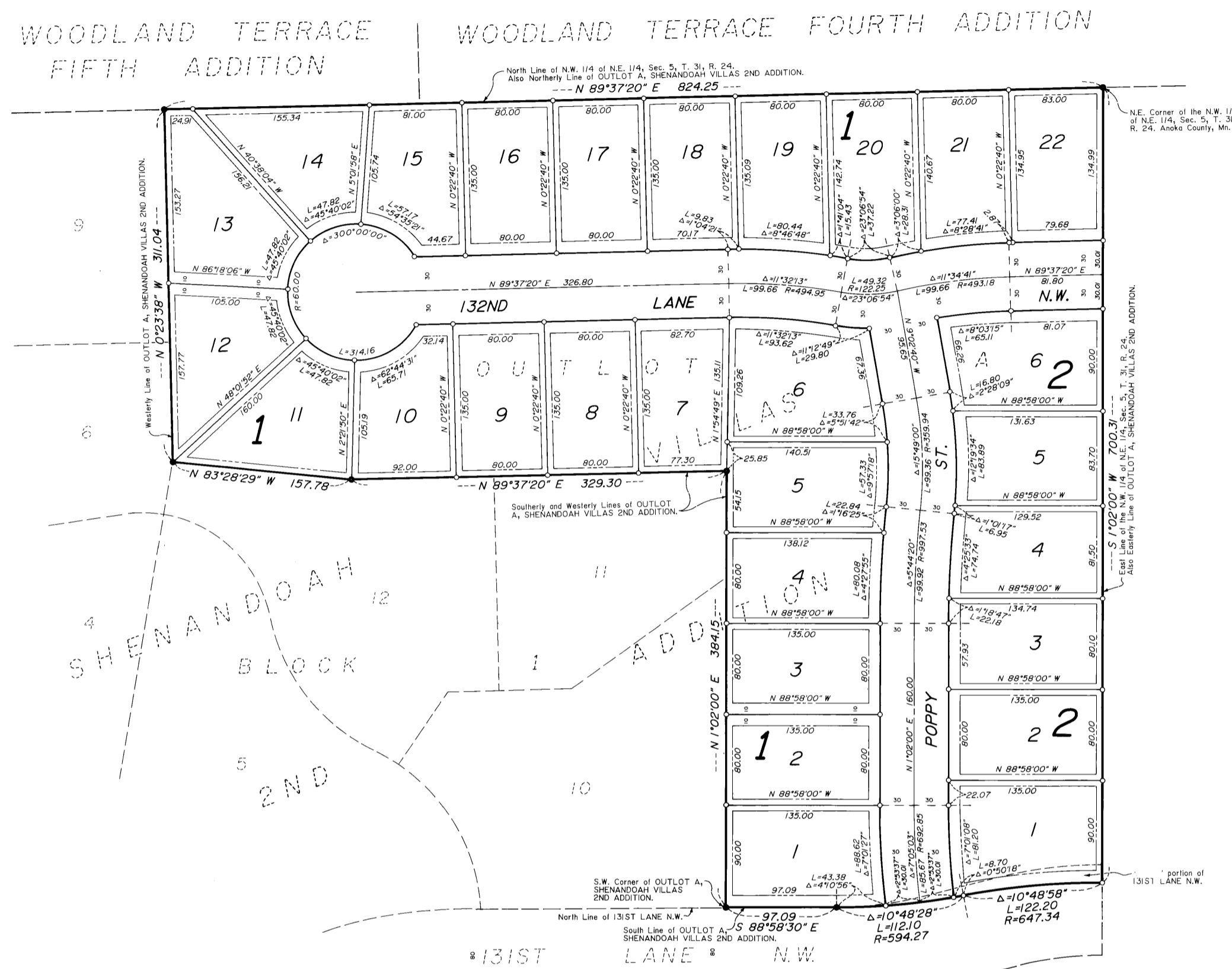


# SHENANDOAH MEADOWS

CITY OF COON RAPIDS,  
ANOKA COUNTY, MN.

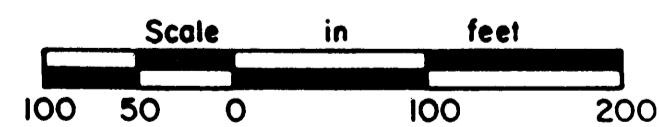
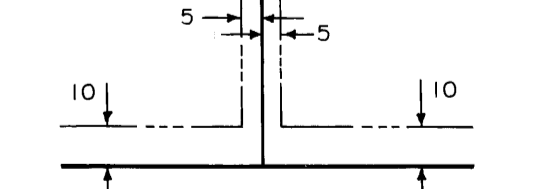


Scale 1 inch = 100 feet

For the purposes of this plat, the North Line of the N.W. 1/4 of the N.E. 1/4, Sec. 5 is assumed to bear N 89°37'20" E.

- Denotes iron pipe set with a plastic plug stamped RLS 13057.
- Denotes iron pipe found.

Drainage and Utility Easements are shown thus:



"NO DELINQUENT TAXES AND TRANSFER ENTLED"

October 23 1992  
Charles E. Redburn  
Auditor, Anoka County

By: *[Signature]*  
Deputy

I HEREBY CERTIFY THAT THE TAXES PAYABLE IN THE YEAR 1992 ON THE LANDS DESCRIBED WITHIN ARE PAID

By: *[Signature]*  
Anoka County Treasurer  
D. Henry - Deputy

201558  
Office of REGISTRAR OF TITLES  
STATE OF MINNESOTA  
COUNTY OF ANOKA  
I hereby certify that the within instrument was filed in this office on the 23rd day of Oct A.D. 1992 at 12 o'clock P.M.  
By: *[Signature]* Registrar of Titles  
By: *[Signature]* DEPUTY REGISTRAR OF TITLES

JOHN OLIVER & ASSOCIATES, INC.

922 Main Street  
St. Paul, Minnesota 55108  
(612) 441-9073

Land Surveying  
Subdivision Design  
Site Planning

KNOW ALL MEN BY THESE PRESENTS: That Riverdale Partnership, a Minnesota partnership, fee owner of the following described properties situated in the State of Minnesota, County of Anoka, to-wit:

Outlot A, SHENANDOAH VILLAS 2ND ADDITION;

AND that part of 131ST Lane N.W. which lies North of the following described line: Beginning at the Southwest corner of said Outlot A, said point is also on the north line of said 131ST Lane N.W.; thence South 88 degrees 58 minutes 30 seconds East, along the South line of said Outlot A and said North line of 131ST Lane N.W., a distance of 97.09 feet; thence Easterly a distance of 112.10 feet along a tangential curve concave to the North, central angle of 10 degrees 48 minutes 28 seconds, and radius of 594.27 feet; thence Easterly a distance of 122.20 feet along a reverse curve concave to the South, central angle of 10 degrees 48 minutes 58 seconds, and radius of 647.34 feet to the East line of the Northwest Quarter of the Northeast Quarter of Section 5, Township 31, Range 24, in said Anoka County, Minnesota and there terminating.

Have caused the same to be surveyed and platted as SHENANDOAH MEADOWS, and do hereby donate and dedicate to the public for the public use forever the thoroughfares and cul-de-sac as shown on this plat. Also dedicating to the public, the easements as shown on this plat for drainage and utility purposes only. In witness whereof said Riverdale Partnership has caused these presents to be signed by its general partner this 23rd day of August, 1990.

RIVERDALE PARTNERSHIP

By: *[Signature]*, James M. Stanton, as President, Shamrock Development, Inc.,  
A Minnesota corporation, a general partner

State of Minnesota, County of Anoka

The foregoing instrument was acknowledged before me this 23rd day of August, 1990 by James M. Stanton, as President of Shamrock Development, Inc., a Minnesota corporation, a general partner on behalf of Riverdale Partnership, a Minnesota partnership.

ANGELA J. ZAJAC  
NOTARY PUBLIC - MINNESOTA  
ANOKA  
My Commission Expires April 22, 1993

*[Signature]*, Notary Public, Anoka County, Minnesota  
My commission expires: April 22, 1993

I hereby certify that I have surveyed and platted the property described in this plat as SHENANDOAH MEADOWS and that this plat is a correct representation of said survey; that all monuments have been correctly placed in the ground as shown on the plat; that all distances are correctly shown on the plat in feet and hundredths of a foot; that the outside boundary lines are correctly designated on the plat; and that there are no wet lands or public highways to be designated on the plat other than as shown thereon.

*[Signature]*  
Lynn P. Caswell, Land Surveyor  
Minnesota Registration No. 13057

State of Minnesota, County of Sherburne

The foregoing instrument was acknowledged before me this 23rd day of AUGUST, 1990 by Lynn P. Caswell, Land Surveyor.

MAHELOM P. GLINES  
NOTARY PUBLIC - MINNESOTA  
SHERBURNE COUNTY  
My Commission Expires April 26, 1991

*[Signature]*, Notary Public, Sherburne County, Minnesota  
My commission expires: APRIL 24, 1991

Annexed plat of SHENANDOAH MEADOWS was approved by the Planning Commission of the City of Coon Rapids, Minnesota this 21st day of JUNE, 1992

By: *[Signature]*, Chairman

Annexed plat of SHENANDOAH MEADOWS was approved by the City Council of Coon Rapids, Minnesota at a regular meeting thereof held this 17th day of AUGUST, 1990. If applicable, the written comments and recommendations of the Commissioner of Transportation and the County Highway Engineer have been received by the City or the prescribed 30 day period has elapsed without receipt of such comments and recommendations, as provided by Minnesota Statutes Section 505.03, Subdivision 2.

By: *[Signature]*, Mayor Attest: *[Signature]*, Clerk

This plat has been checked and approved this 22nd day of Oct, 1990.

*[Signature]*, Anoka County Surveyor