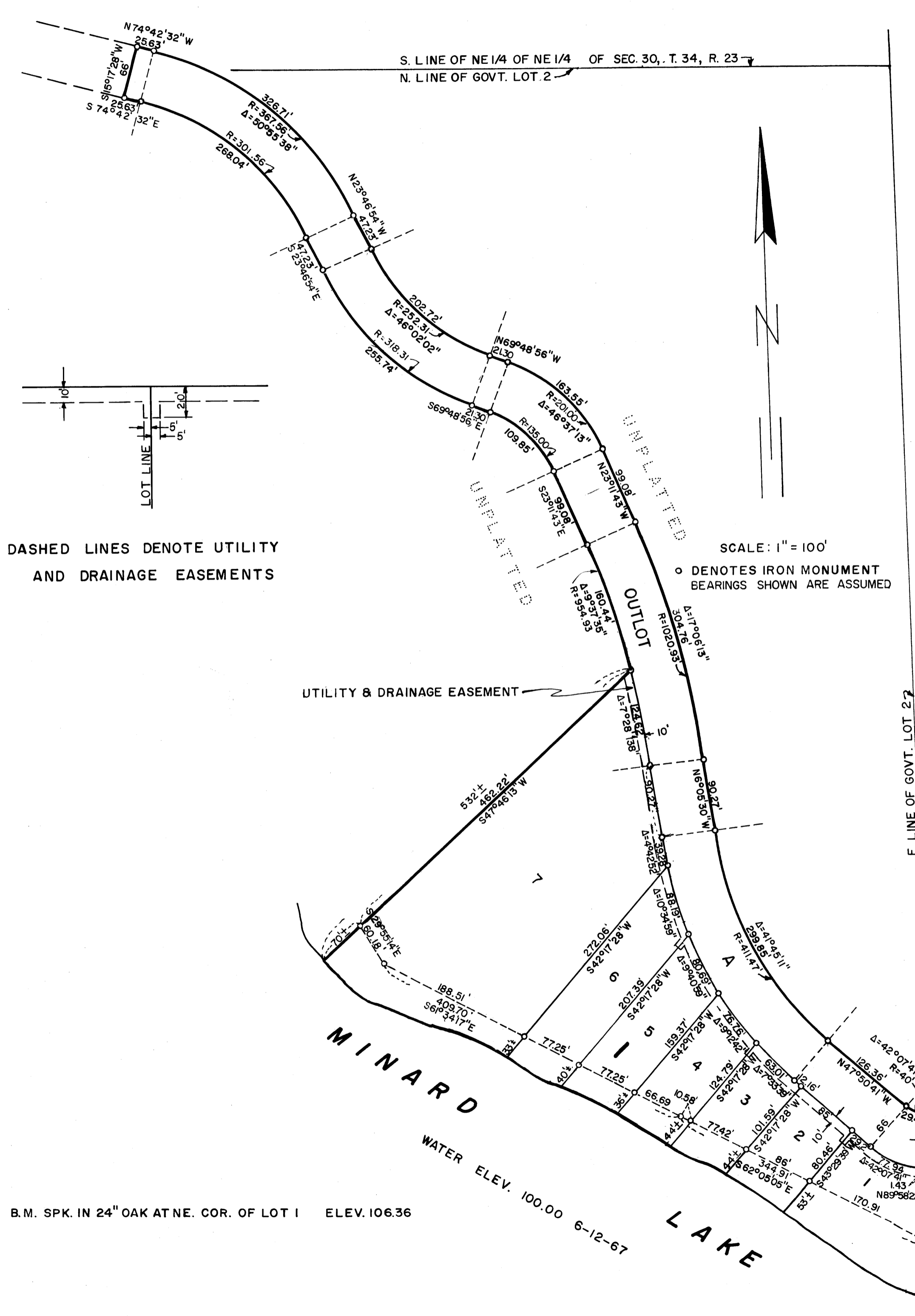


SKYLARK PARK

VILLAGE OF EAST BETHEL - COUNTY OF ANOKA



DASHED LINES DENOTE UTILITY AND DRAINAGE EASEMENTS

SCALE: 1" = 100'

○ DENOTES IRON MONUMENT BEARINGS SHOWN ARE ASSUMED

B.M. SPK. IN 24" OAK AT NE. COR. OF LOT 1 ELEV. 106.36

KNOW ALL MEN BY THESE PRESENTS: THAT JANET WARDELL RIDLER, UNMARRIED AND OWNER AND PROPRIETOR OF THE FOLLOWING DESCRIBED PROPERTY SITUATED IN THE COUNTY OF ANOKA, STATE OF MINNESOTA, TO-WIT: THAT PART OF GOVERNMENT LOT 2 AND THE NE 1/4 OF THE NE 1/4 OF SECTION 30, TOWNSHIP 34, RANGE 23 IN ANOKA COUNTY, MINNESOTA DESCRIBED AS FOLLOWS: BEGINNING AT THE EAST QUARTER CORNER OF SAID SECTION 30, THENCE NORTH 0°55'23" WEST ALONG THE EAST LINE OF SAID GOVERNMENT LOT 2 A DISTANCE OF 33.00 FEET; THENCE NORTH 89°58'22" WEST A DISTANCE OF 0.34 FEET; THENCE DEFLECT RIGHT IN A NORTHWESTERLY DIRECTION ALONG A TANGENTIAL CURVE CONCAVE TO THE NORTHEAST HAVING A RADIUS OF 400.00 FEET A DISTANCE OF 294.1 FEET; THENCE NORTH 47°50'41" WEST A DISTANCE OF 126.36 FEET; THENCE DEFLECT RIGHT IN A NORTHWESTERLY DIRECTION ALONG A TANGENTIAL CURVE CONCAVE TO THE NORTHEAST HAVING A RADIUS OF 411.47 FEET A DISTANCE OF 299.85 FEET; THENCE NORTH 6°05'30" WEST A DISTANCE OF 90.27 FEET; THENCE DEFLECT LEFT IN A NORTHWESTERLY DIRECTION ALONG A TANGENTIAL CURVE CONCAVE TO THE SOUTHWEST HAVING A RADIUS OF 1020.93 FEET A DISTANCE OF 304.76 FEET; THENCE NORTH 23°11'43" WEST A DISTANCE OF 99.08 FEET; THENCE DEFLECT LEFT IN A NORTHWESTERLY DIRECTION ALONG A TANGENTIAL CURVE CONCAVE TO THE SOUTHWEST HAVING A RADIUS OF 201.00 FEET A DISTANCE OF 163.55 FEET; THENCE NORTH 69°48'56" WEST A DISTANCE OF 21.30 FEET; THENCE DEFLECT RIGHT IN A NORTHWESTERLY DIRECTION ALONG A TANGENTIAL CURVE CONCAVE TO THE NORTHEAST HAVING A RADIUS OF 252.31 FEET A DISTANCE OF 202.72 FEET; THENCE NORTH 23°46'54" WEST A DISTANCE OF 47.23 FEET; THENCE DEFLECT LEFT IN A NORTHWESTERLY DIRECTION ALONG A TANGENTIAL CURVE CONCAVE TO THE SOUTHWEST HAVING A RADIUS OF 367.56 FEET A DISTANCE OF 326.71 FEET; THENCE NORTH 74°42'32" WEST A DISTANCE OF 256.3 FEET; THENCE SOUTH 15°17'28" WEST A DISTANCE OF 66.00 FEET; THENCE SOUTH 74°42'32" EAST A DISTANCE OF 256.3 FEET; THENCE DEFLECT RIGHT IN A SOUTHEASTERLY DIRECTION ALONG A TANGENTIAL CURVE CONCAVE TO THE SOUTHWEST HAVING A RADIUS OF 301.56 FEET A DISTANCE OF 268.04 FEET; THENCE SOUTH 23°46'54" EAST A DISTANCE OF 47.23 FEET; THENCE DEFLECT LEFT IN A SOUTHEASTERLY DIRECTION ALONG A TANGENTIAL CURVE CONCAVE TO THE NORTHEAST HAVING A RADIUS OF 318.31 FEET A DISTANCE OF 255.74 FEET; THENCE SOUTH 69°48'56" EAST A DISTANCE OF 21.30 FEET; THENCE DEFLECT RIGHT IN A SOUTHEASTERLY DIRECTION ALONG A TANGENTIAL CURVE CONCAVE TO THE SOUTHWEST HAVING A RADIUS OF 135.00 FEET A DISTANCE OF 109.85 FEET; THENCE SOUTH 23°11'43" EAST A DISTANCE OF 99.08 FEET; THENCE DEFLECT RIGHT IN A SOUTHEASTERLY DIRECTION ALONG A TANGENTIAL CURVE CONCAVE TO THE SOUTHWEST HAVING A RADIUS OF 954.93 FEET AND A CENTRAL ANGLE OF 9°37'35" A DISTANCE OF 160.44 FEET; THENCE SOUTH 47°46'13" WEST A DISTANCE OF 532 FEET MORE OR LESS TO THE NORTHEAST SHORE OF MINARD LAKE; THENCE SOUTHEASTERLY ALONG SAID NORTHEAST SHORE TO A POINT ON THE EAST LINE OF SAID GOVERNMENT LOT 2; THENCE NORTH 0°55'23" WEST ALONG SAID EAST LINE A DISTANCE OF 194 FEET MORE OR LESS TO THE POINT OF BEGINNING; HAVE CAUSED THE SAME TO BE SURVEYED AND PLATTED AS SKYLARK PARK AND DO HEREBY DONATE AND DEDICATE TO THE PUBLIC FOR PUBLIC USE FOREVER THE UTILITY AND DRAINAGE EASEMENTS AS SHOWN ON THE ANNEXED PLAT. IN WITNESS WHEREOF JANET WARDELL RIDLER, UNMARRIED, HAS HEREUNTO SET HER HAND AND SEAL THIS 7th DAY OF August 1971 A.D.

IN THE PRESENCE OF:

Eva V. Nordin
WITNESS

David E. Powell
WITNESS

SIGNED:
Janet Wardell Ridler
JANET WARDELL RIDLER

STATE OF MINNESOTA (SS)
COUNTY OF ANOKA

ON THIS 7th DAY OF AUG 1971 A.D. BEFORE ME A NOTARY PUBLIC, WITHIN AND FOR SAID COUNTY AND STATE, PERSONALLY APPEARED JANET WARDELL RIDLER, UNMARRIED, TO ME PERSONALLY KNOWN, TO BE THE PERSON DESCRIBED IN AND WHO EXECUTED THE FOREGOING INSTRUMENT, AND SHE AFFIRMS AND ACKNOWLEDGES THAT SHE EXECUTED THE SAME AS HER OWN FREE ACT AND DEED.

Eva V. Nordin
NOTARY PUBLIC, ANOKA COUNTY, MINNESOTA
MY COMMISSION EXPIRES 1-1-1972
EVA V. NORDIN
Notary Public, Anoka County, Minn.
My Commission Expires Sept. 4, 1975

I DO HEREBY CERTIFY THAT I HAVE SURVEYED AND PLATTED THE PROPERTY DESCRIBED ON THIS PLAT AS SKYLARK PARK; THAT THIS PLAT IS A CORRECT REPRESENTATION OF SAID SURVEY; THAT ALL DISTANCES ARE CORRECTLY SHOWN ON SAID PLAT IN FEET AND DECIMALS OF A FOOT; THAT ALL MONUMENTS HAVE BEEN CORRECTLY PLACED IN THE GROUND AS SHOWN ON THE PLAT; THAT THE OUTSIDE BOUNDARY LINES ARE CORRECTLY DESIGNATED ON THE PLAT; AND THERE ARE NO WET LANDS OR PUBLIC HIGHWAYS TO BE DESIGNATED ON SAID PLAT OTHER THAN SHOWN THEREON.

STATE OF MINNESOTA (SS)
COUNTY OF ANOKA

ABOVE CERTIFICATE SUBSCRIBED AND SWORN TO BEFORE ME, A NOTARY PUBLIC WITHIN SAID COUNTY AND STATE ON THIS 6th DAY OF August 1971 A.D.

SURVEYOR LeRoy H. Winner
MINNESOTA REGISTRATION NO. 4987

Arvid H. Cassatola
NOTARY PUBLIC, ANOKA COUNTY, MINNESOTA
MY COMMISSION EXPIRES 7-17-1976

THE ANNEXED PLAT OF SKYLARK PARK WAS APPROVED AND ACCEPTED BY THE VILLAGE COUNCIL OF THE VILLAGE OF EAST BETHEL, MINNESOTA AT A REGULAR MEETING THEREOF HELD THIS 7th DAY OF August 1971 A.D.

VILLAGE COUNCIL OF THE VILLAGE OF EAST BETHEL, MINNESOTA

Emin Maul
MAYOR

Beverly Lindberg
CLERK

THIS PLAT WAS CHECKED AND APPROVED ON THIS 9th DAY OF August 1971 A.D.

Roland W. Anderson
COUNTY SURVEYOR, ANOKA COUNTY, MINNESOTA

"NO DELINQUENT TAXES"

September 2, 1971
Auditor Anoka County

LEROY H. WINNER & ASSOC., INC. - LAND SURVEYORS

354884

OFFICE OF REGISTER OF DEEDS
STATE OF MINNESOTA, COUNTY OF ANOKA } SS

I hereby certify that the within instrument was filed in this office for record on the 2nd day of August, 1971, at 11:00 o'clock A.M., and was duly recorded in book 7 of Plate 2 page 15.

Fred J. Omdahl
Register of Deeds
By Margaret Russell
Deputy