

SLATER ADDITION

City of Lino Lakes
County of Anoka
Sec. 8, T31, R22

KNOW ALL PERSONS BY THESE PRESENTS: That Boulder Contracting, LLC, a Minnesota limited liability company, owner of the following described property:

Lot 1, Block 4, MAR DON ACRES, Anoka County, Minnesota, together with that portion of Lois Lane vacated by Document No. 2320299.001.

Has caused the same to be surveyed and platted as SLATER ADDITION and does hereby dedicate to the public for public use the drainage and utility easements as shown on this plat.

In witness whereof said Boulder Contracting, LLC, a Minnesota limited liability company, has caused these presents to be signed by its proper officer this 17 day of January, 2025.

BOULDER CONTRACTING, LLC

Brian Jansen, General Manager

STATE OF Minnesota
COUNTY OF Anoka

This instrument was acknowledged before me this 17th day of January, 2025 by Brian Jansen, General Manager of Boulder Contracting, LLC, a Minnesota limited liability company, on behalf of the company.

LaVae Mack (Signature)

LaVae Mack (Print Name)

Notary Public, Anoka County, Minnesota
My Commission Expires January 31, 2027

I Jason E. Rud do hereby certify that this plat was prepared by me or under my direct supervision; that I am a duly Licensed Land Surveyor in the State of Minnesota; that this plat is a correct representation of the boundary survey; that all mathematical data and labels are correctly designated on this plat; that all monuments depicted on this plat have been, or will be correctly set within one year; that all water boundaries and wet lands, as defined in Minnesota Statutes, Section 505.01, Subd. 3, as of the date of this certificate are shown and labeled on this plat; and all public ways are shown and labeled on this plat.

Dated this 16th day of JANUARY, 2025.

Jason E. Rud
Jason E. Rud, Licensed Land Surveyor
Minnesota License No. 41578

STATE OF MINNESOTA
COUNTY OF Anoka

This instrument was acknowledged before me this 16th day of January, 2025 by Jason E. Rud.

LaVae Mack (Signature)

LaVae Mack (Print Name)

Notary Public, Anoka County, Minnesota
My Commission Expires January 31, 2027

CITY COUNCIL, CITY OF LINO LAKES, MINNESOTA

This plat of SLATER ADDITION was approved and accepted by the City Council of the City of Lino Lakes, Minnesota at a regular meeting thereof held this 13 day of January, 2025, and said plat is in compliance with the provisions of Minnesota Statutes, Section 505.03, Subd. 2.

CITY COUNCIL, CITY OF LINO LAKES, MINNESOTA

By John Harrold Mayor By Robert Clith Clerk

COUNTY SURVEYOR

I hereby certify that in accordance with Minnesota Statutes, Section 505.021, Subd. 11, this plat has been reviewed and approved this 11th day of March, 2025.

David M. Zieglmeier
David M. Zieglmeier
Anoka County Surveyor

COUNTY AUDITOR/TREASURER

Pursuant to Minnesota Statutes, Section 505.021, Subd. 9, taxes payable in the year 2025 on the land hereinbefore described have been paid. Also, pursuant to Minnesota Statutes, Section 272.12, there are no delinquent taxes and transfer entered this 12th day of March, 2025.

Pamela J LeBlanc
Property Tax Administrator

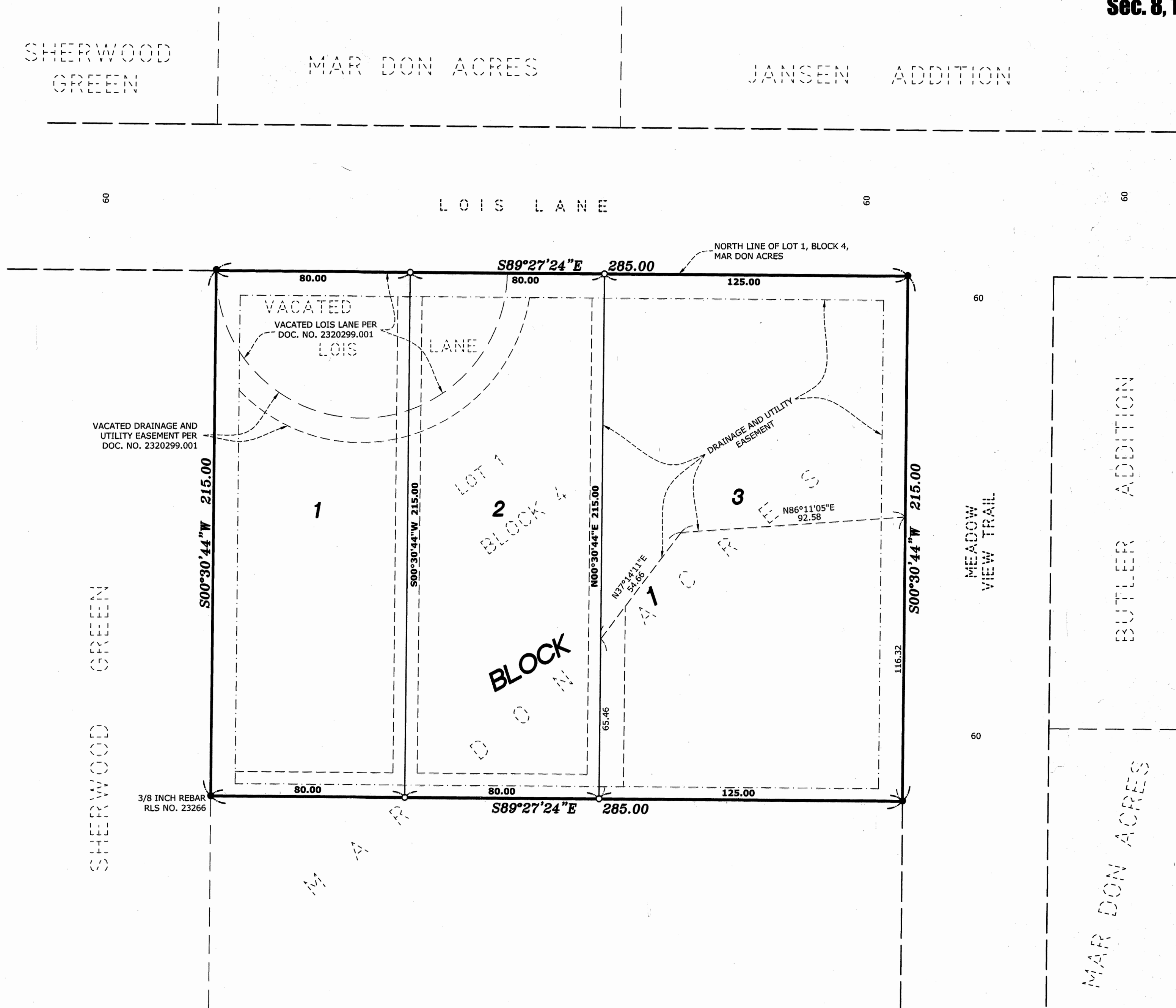
By Ante Muelot, Deputy

COUNTY RECORDER/REGISTRAR OF TITLES
COUNTY OF ANOKA, STATE OF MINNESOTA

I hereby certify that this plat of SLATER ADDITION was filed in the office of the County Recorder/Registrar of Titles for public record on this 12th day of March, 2025, at 9:08 o'clock A.M. and was duly recorded as Document Number 2434108.002.

Pamela J LeBlanc
County Recorder/Registrar of Titles

By Ante Muelot, Deputy



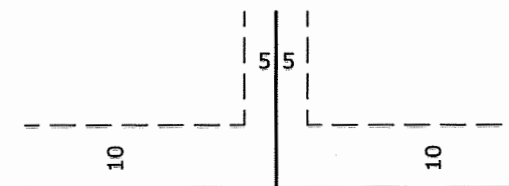
LEGEND

- DENOTES FOUND 1/2 INCH IRON PIPE, MARKED RLS NO. 9018 UNLESS OTHERWISE NOTED.
- DENOTES 1/2 INCH BY 14 INCH IRON PIPE SET, MARKED RLS NO. 41578.
- DENOTES DRAINAGE AND UTILITY EASEMENT PER PLAT OF MAR DON ACRES

FOR THE PURPOSES OF THIS PLAT, THE NORTH LINE LOT 1, BLOCK 4, MAR DON ACRES, ANOKA COUNTY, MINNESOTA IS ASSUMED TO HAVE A BEARING OF SOUTH 89 DEGREES 27 MINUTES 24 SECONDS EAST.

EASEMENT DETAIL

DRAINAGE AND UTILITY EASEMENTS ARE SHOWN THUS:



BEING 5 FEET IN WIDTH, AND ADJOINING SIDE LOT LINES, AND 10 FEET IN WIDTH AND ADJOINING RIGHT OF WAY LINES, AND REAR LOT LINES, UNLESS OTHERWISE SHOWN ON THIS PLAT.

NORTH

