

SLEEPING MEADOWS SECOND

CITY OF BLAINE,

ANOKA COUNTY

KNOW ALL PERSONS BY THESE PRESENTS that Thomas E. Blomberg and Karla A. Blomberg, husband and wife, fee owners, and Merrill Lynch Mortgage Corporation, a Delaware corporation, mortgagee, of the following described property:

The North Half (N 1/2) of Lot Twenty (20) of Green Acres Addition, according to the plat thereof on file and of record in the office of the County Recorder in and for Anoka County, Minnesota.

have caused the same to be surveyed and platted as SLEEPING MEADOWS SECOND and do hereby donate and dedicate to the public for the public use forever the streets, avenue and drainage and utility easements as shown on the plat.

In witness whereof said Thomas E. Blomberg and Karla A. Blomberg, husband and wife, have caused these presents to be signed this 11th day of July, 1986. In witness whereof said Merrill Lynch Mortgage Corporation, a Delaware corporation, has caused these presents to be signed by its proper officer this 31st day of July, 1986.

SIGNED:

Thomas E. Blomberg
Thomas E. Blomberg

Karla A. Blomberg
Karla A. Blomberg

MERRILL LYNCH MORTGAGE CORPORATION

Elmer Stang its ASSISTANT VICE PRESIDENT

STATE OF MINNESOTA)
COUNTY OF Anoka)

The foregoing instrument was acknowledged before me this 11th day of July, 1986, by Thomas E. Blomberg and Karla A. Blomberg, husband and wife.

Joyce A. Turstel
Notary Public Anoka County, Minnesota
My Commission Expires 12-9-90

STATE OF California)
COUNTY OF San Diego)

The foregoing instrument was acknowledged before me this 31st day of July, 1986, by Elmer Stang its Asst. Vice President, for Merrill Lynch Mortgage Corporation, a Delaware corporation, on behalf of the corporation.

Ralph McLaughlin
Notary Public San Diego County, California
My Commission Expires Dec 20, 1988

I, Ron Murphy, hereby certify that I have surveyed and platted the property described in the dedication of this plat as SLEEPING MEADOWS SECOND, that this plat is a correct representation of said survey; that all distances are correctly shown on the plat in figures denoting feet and hundredths of a foot; that all monuments have been correctly placed in the ground as shown; that the outside boundary lines are correctly designated on the plat; and that there are no wet lands, easements or public highways other than as shown thereon.

Ron Murphy
Ron Murphy Minnesota Registration No. 10832

STATE OF MINNESOTA)
COUNTY OF ANOKA)

The Surveyor's Certificate was acknowledged before me this 30th day of June, 1986, by Ron Murphy, Land Surveyor.

Phyllis M. Prokornick
Notary Public, Anoka County, Minnesota
My Commission Expires March 27, 1991

We hereby certify that the City Council of the City of Blaine, Anoka County, Minnesota, duly accepted and approved the annexed plat of SLEEPING MEADOWS SECOND at a regular meeting thereof held this 10th day of July, 1986. If applicable, the written comments and recommendations of the Commissioner of Transportation and the County Highway Engineer have been received by the city or township or the prescribed 30 day period has elapsed without receipt of such comments and recommendations, as provided by Minnesota Statutes, Section 505.03, Subd. 2.

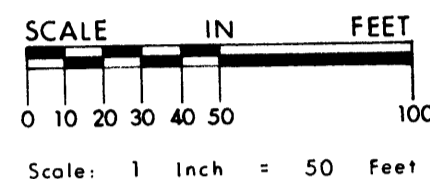
CITY COUNCIL OF BLAINE, MINNESOTA

Ron Clark
Mayor

Richard P. Johnson
City Manager

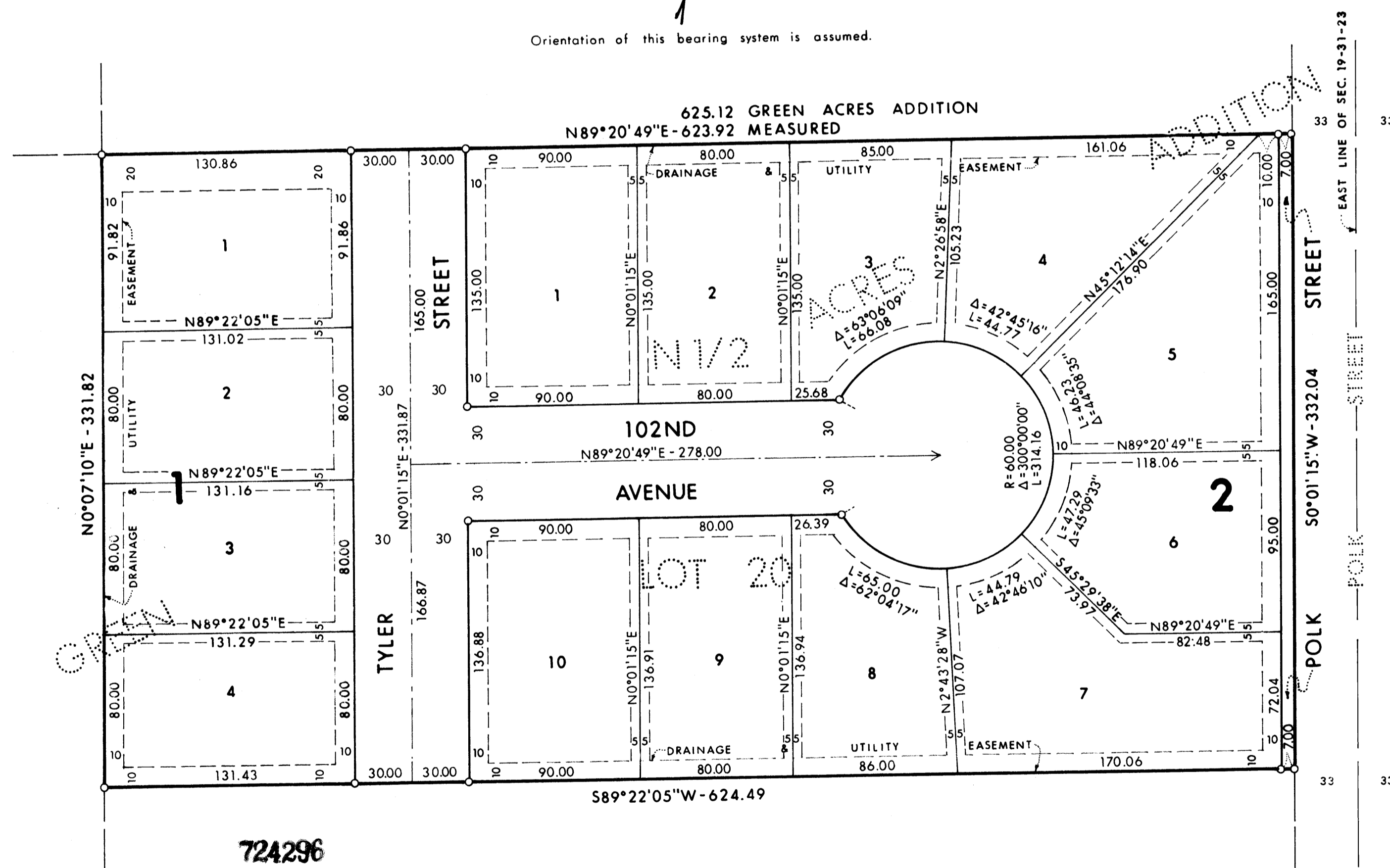
Roland W. Anderson
Anoka County Surveyor

Checked and approved this 3rd day of September, 19 86.



- Denotes iron monument found
- Denotes iron monument set & capped RLS 10832 1/2" I.D. iron pipe monuments capped RLS 10832 have been set at all lot corners.

Orientation of this bearing system is assumed.



724296

OFFICE OF COUNTY RECORDER
STATE OF MINNESOTA, COUNTY OF ANOKA
I hereby certify that the within instrument was filed in this office for record on the SEP 5 1986 A.D., 19 11 o'clock A.M. and was duly recorded in book 36 of Plats page 45

Red Andahl
County Recorder
A. D. Swanson
Deputy

"NO DELINQUENT TAXES AND TRANSFER ENTERED"

Sept 3, 1986

Charles R. Lefebvre
Auditor, Anoka County

I HEREBY CERTIFY THAT THE TAXES PAYABLE IN THE YEAR 1986 ON THE LANDS DESCRIBED WITHIN ARE PAID
Donald P. Bailey, M. D. Sander
Anoka County Treasurer

BY S. Culver
Deputy

COMSTOCK & DAVIS, INC.

CONSULTING ENGINEERS AND LAND SURVEYORS

