

# SMITH GROVE

KNOW ALL PERSONS BY THESE PRESENTS: That JD Development Group Limited, a Minnesota corporation, owner of the following described property:

The Southeast Quarter of the Northeast Quarter of Section 25, Township 33, Range 24, Anoka County, Minnesota, except the West 390.00 feet of the East 825.00 feet of the South 560.00 feet of said Southeast Quarter of the Northeast Quarter, as measured along the South and East lines thereof. Also excepting that part of the South 900.00 feet of the Southeast Quarter of the Northeast Quarter of Section 25 Township 33 Range 24, Anoka County, Minnesota, lying westerly of the East 825.00 feet, as measured along the South line of said Southeast Quarter of the Northeast Quarter. Except that part platted as ANOKA COUNTY HIGHWAY RIGHT-OF-WAY PLAT NO. 13.

and

The Northeast Quarter of the Northeast Quarter of Section 25, Township 33, Range 24, Anoka County, Minnesota.

Has caused the same to be surveyed and platted as SMITH GROVE and does hereby dedicate to the public for public use the public ways and the drainage and utility easements as shown on this plat. Also dedicating to the County of Anoka the right of access onto County State Aid Highway No. 22 as shown on this plat.

In witness whereof said JD Development Group Limited, a Minnesota corporation, has caused these presents to be signed by its proper officer this 29<sup>th</sup> day of September, 2021.

JD Development Group Limited

Doreen K. Lovelette

Doreen K. Lovelette, President

STATE OF Minnesota  
COUNTY OF Anoka

This instrument was acknowledged before me on September 29, 2021 by Doreen K. Lovelette, President of JD Development Group Limited, a Minnesota corporation, on behalf of the corporation.

J. Moehlman

(Signed)

Jennifer Moehlman

(Printed)

Notary Public, Mille Lacs County, Minnesota  
My commission expires 1-31-2024

I Thomas R. Balluff do hereby certify that this plat was prepared by me or under my direct supervision; that I am a duly Licensed Land Surveyor in the State of Minnesota; that this plat is a correct representation of the boundary survey; that all mathematical data and labels are correctly designated on this plat; that all monuments depicted on this plat have been, or will be correctly set within one year; that all water boundaries and wet lands, as defined in Minnesota Statutes, Section 505.01, Subd. 3, as of the date of this certificate are shown and labeled on this plat; and all public ways are shown and labeled on this plat.

Dated this 29<sup>th</sup> day of SEPTEMBER, 2021.

Thomas R. Balluff

Thomas R. Balluff, Licensed Land Surveyor  
Minnesota License No. 40361

STATE OF Minnesota  
COUNTY OF Anoka

This instrument was acknowledged before me on September 29<sup>th</sup>, 2021 by Thomas R. Balluff.

Cynthia J. Morical

(Signed)

Cynthia J. Morical

(Printed)

Notary Public, Hennepin County, Minnesota  
My commission expires January 31, 2025

CITY COUNCIL, CITY OF OAK GROVE, MINNESOTA

This plat of SMITH GROVE was approved and accepted by the City Council of the City of Oak Grove, Minnesota at a regular meeting thereof held this 30<sup>th</sup> day of August, 2021, and said plat is in compliance with the provisions of Minnesota Statutes, Section 505.03, Subd. 2.

CITY COUNCIL, CITY OF OAK GROVE, MINNESOTA

By: Dan Remt, Mayor

By: J. Kieland, Clerk

COUNTY SURVEYOR

I hereby certify that in accordance with Minnesota Statutes, Section 505.021, Subd. 11, this plat has been reviewed and approved this 12<sup>th</sup> day of October, 2021.

By: David M. Ziegler

David M. Ziegler  
Anoka County Surveyor

COUNTY AUDITOR/TREASURER

Pursuant to Minnesota Statutes, Section 505.021, Subd. 9, taxes payable in the year 2021 on the land hereinbefore described have been paid. Also, pursuant to Minnesota Statutes, Section 272.12, there are no delinquent taxes and transfer entered this 12<sup>th</sup> day of October, 2021.

Pamela J. DeBlanc

Property Tax Administrator

By: Dharon Paul, Deputy

COUNTY RECORDER/REGISTRAR OF TITLES

County of Anoka, State of Minnesota

I hereby certify that this plat of SMITH GROVE was filed in the office of the County Recorder/Registrar of Titles for public record on this 12<sup>th</sup> day of October, 2021, at 10:06 o'clock A.M. and was duly recorded as Document Number 2340373.023.

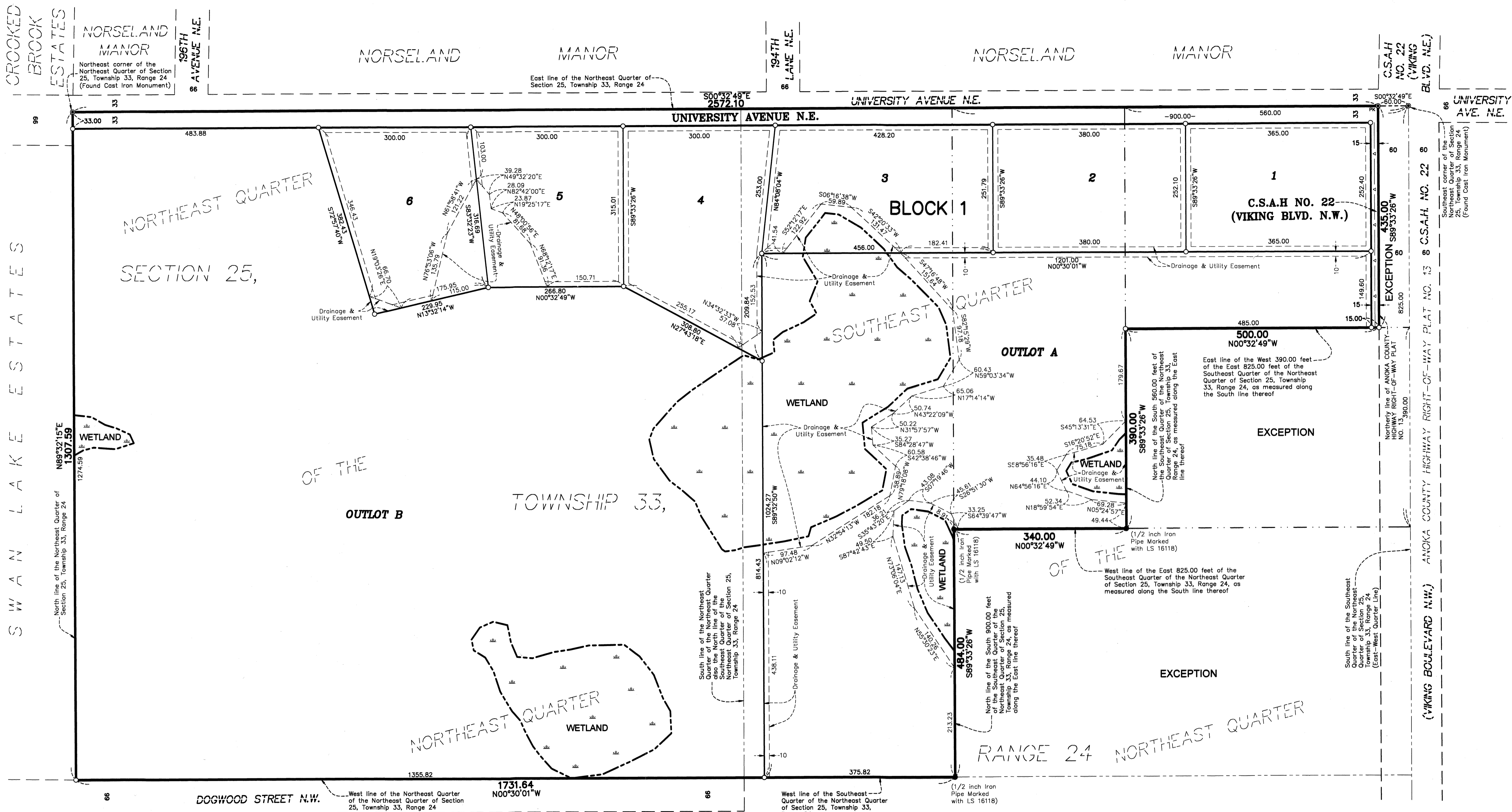
Pamela J. DeBlanc

County Recorder/Registrar of Titles

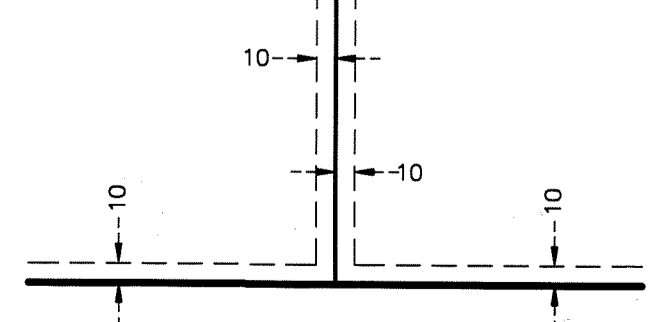
By: Dharon Paul, Deputy

# SMITH GROVE

CITY OF OAK GROVE  
COUNTY OF ANOKA  
SEC. 25, TWP. 33, RGE. 24

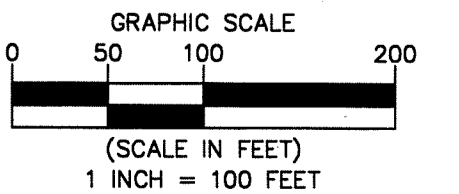


DRAINAGE AND UTILITY EASEMENTS ARE SHOWN THUS:



being 10 feet in width, and adjoining side lot lines, right of way lines and rear lot lines unless otherwise shown on this plat.

- Denotes Found Anoka County Cast Iron Monument
- ⊙ Denotes Set PK Nail
- Denotes 5/8 inch by 14 inch Rebar, set or to be set within one year of recording of this plat and marked with license number 40361
- Denotes Found Iron Monument unless otherwise noted
- ▲— Denotes Right of Access dedicated to Anoka County
- ▨ Denotes Wetlands delineated by Kjolhaug Environmental Services in 2021



For the purposes of this plat, the North line of the Northeast Quarter of Section 25, Township 33, Range 24, Anoka County, Minnesota is assumed to bear North 89°32'15" East.

