

# SMITH LAKE WILDLIFE ESTATES 2ND ADDITION

City of St. Francis  
County of Anoka  
Sec. 26, Twp. 34, Rge. 24

Bk. 71 Adot. Pj. 37

KNOW ALL PERSONS BY THESE PRESENTS: That Stalberger Properties, Inc., a Minnesota corporation, owner and proprietor, and Village Bank, a Minnesota corporation, mortgagee of the following described property situated in the County of Anoka, State of Minnesota, to-wit:

The Northwest Quarter of the Southeast Quarter of Section 26, Township 34 North, Range 24 West;

Have caused the same to be surveyed and platted as SMITH LAKE WILDLIFE ESTATES 2ND ADDITION and do hereby donate and dedicate to the public for public use forever the lanes, streets, and drainage and utility easements as shown on the plat. In witness whereof said Stalberger Properties, Inc., has caused these presents to be signed by its proper officer this 3<sup>rd</sup> day of APRIL, 2006. Also in witness whereof said Village Bank, has caused these presents to be signed by its proper officers this 3<sup>rd</sup> day of APRIL, 2006.

STALBERGER PROPERTIES, INC.

*Jeffrey A. Stalberger*  
Jeffrey A. Stalberger, as President

VILLAGE BANK:

*[Signature]* as Senior Vice President  
*[Signature]* as Vice President

STATE OF MINNESOTA) The foregoing instrument was acknowledged before me this 3 day of April, 2006, by Jeffrey A. Stalberger, COUNTY OF ANOKA, as President of Stalberger Properties, Inc., a Minnesota corporation, on behalf of the corporation.

**DANA D KINDE**  
NOTARY PUBLIC  
MY COMM. EXP. 01/31/2010

*[Signature]*  
Notary Public, Anoka County, Minnesota  
My Commission expires 1/31/2010

STATE OF MINNESOTA) The foregoing instrument was acknowledged before me this 3 day of April, 2006, by Patrick W. Cullen and Joseph P. Hwang as SVP of Village Bank, a Minnesota corporation, on behalf of the corporation.

**DANA D KINDE**  
NOTARY PUBLIC  
MY COMM. EXP. 01/31/2010

*[Signature]*  
Notary Public, Anoka County, Minnesota  
My Commission expires 1/31/2010

I hereby certify that I have surveyed and platted the land described in the dedication on this plat as SMITH LAKE WILDLIFE ESTATES 2ND ADDITION; that this plat is a correct representation of said survey; that all distances are correctly shown on said plat in feet and hundredths of a foot; that all monuments have been correctly placed in the ground as shown, or shall be correctly placed in the ground within one year after the recording date of this plat; that the outside boundaries are correctly designated on said plat; and that there are no wetlands, in accordance with M.S. 505.02 Subdivision 1, or public highways to be designated on said plat other than as shown thereon.

*[Signature]*  
Jeffrey N. Caine, Registered Land Surveyor  
Minnesota License No. 12251

STATE OF MINNESOTA) The surveyor's certificate was acknowledged before me a Notary Public, this 2<sup>nd</sup> day of March, 2006, COUNTY OF ANOKA, by Jeffrey N. Caine, Land Surveyor.

**JILL M. KENT**  
NOTARY PUBLIC - MINNESOTA  
My Commission Expires Jan. 31, 2010

*[Signature]*  
Notary Public, Anoka County, Minnesota  
My Commission expires 01-31-10

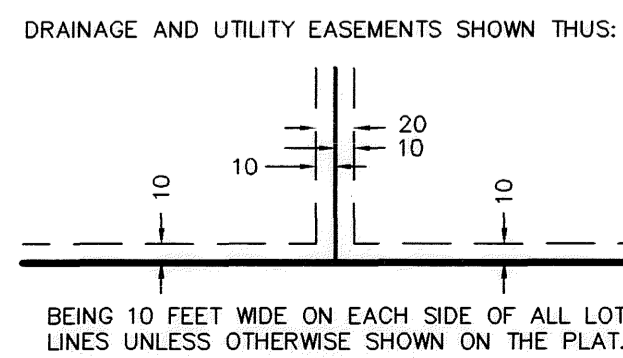
CITY OF ST. FRANCIS

We hereby certify that the City Council of the City of St. Francis, Anoka County, Minnesota, duly accepted and approved the plat of SMITH LAKE WILDLIFE ESTATES 2ND ADDITION at a regular meeting held this 25<sup>th</sup> day of December, 2005. If applicable, the written comments and recommendations of the Commissioner of Transportation and the County Highway Engineer have been received by the city or the prescribed 30 day period has elapsed without receipt of such comments and recommendations, as provided by Minn. Statutes, Section 505.03, Subd. 2.

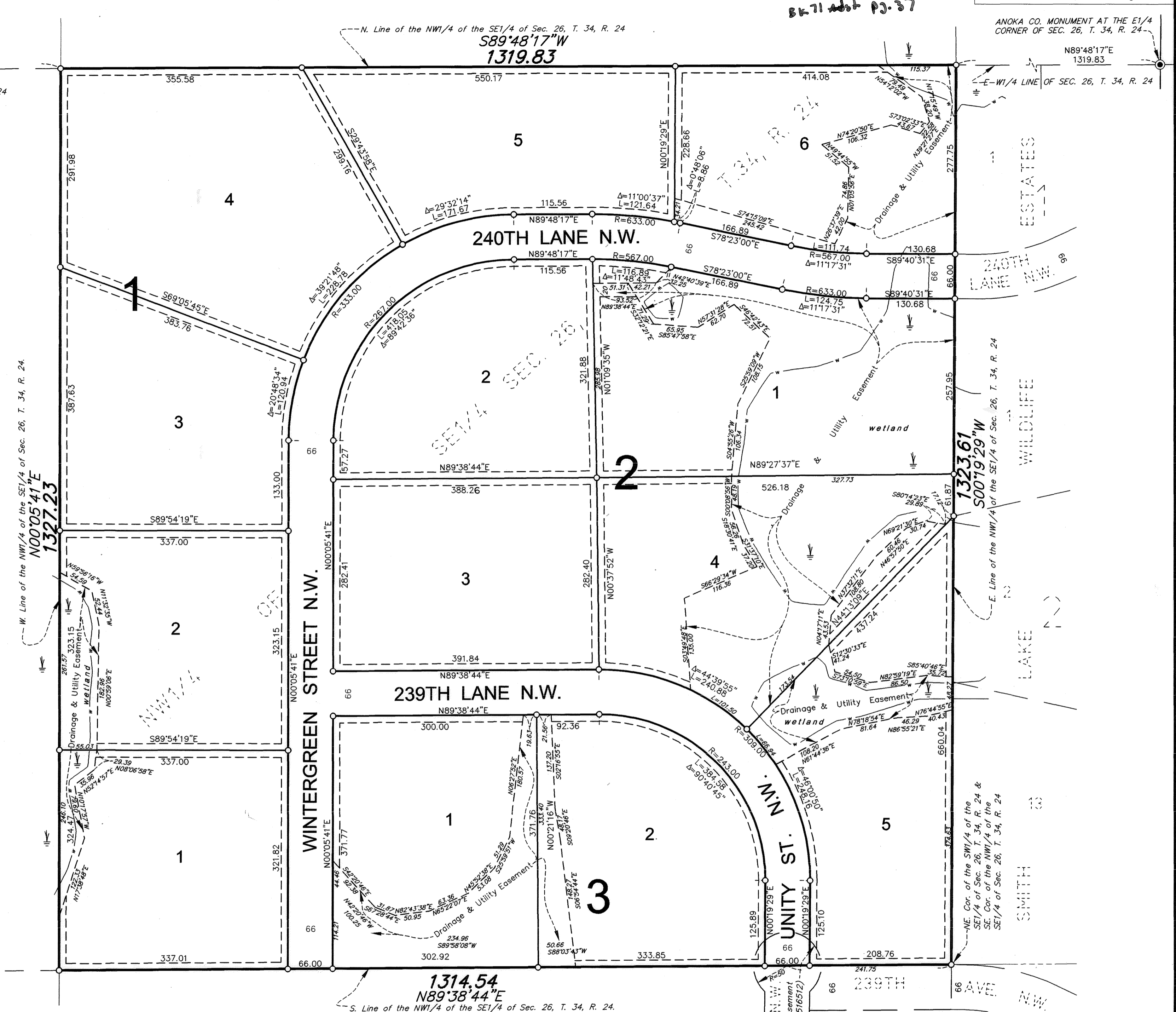
By *[Signature]* Mayor By *[Signature]* Clerk

Checked and approved this 25<sup>th</sup> day of APRIL, 2006

By *[Signature]*  
Anoka County Surveyor



Note: For the purposes of this plat, the north line of the NW1/4 of the SE1/4 of Section 26, Township 34, Range 24, Anoka County, Minnesota, is assumed to bear S89°48'17"W.



1983896.001  
OFFICE OF COUNTY RECORDER  
STATE OF MINNESOTA, COUNTY OF ANOKA  
I hereby certify that the within instrument was filed in this office for record on the 25 day of April, A.D., 2006 at 11:26 clock A.M., and was duly recorded in Book 71 page 37  
By *[Signature]*  
County Recorder

I HEREBY CERTIFY THAT THE CURRENT AND DELINQUENT TAXES ON THE LANDS DESCRIBED WITHIN ARE PAID AND THE TRANSFER IS ENTERED  
April 25, 2006  
MAUREEN J. DEVINE  
PROPERTY TAX ADMINISTRATOR  
By *[Signature]*  
DEPUTY PROPERTY TAX ADMINISTRATOR

