

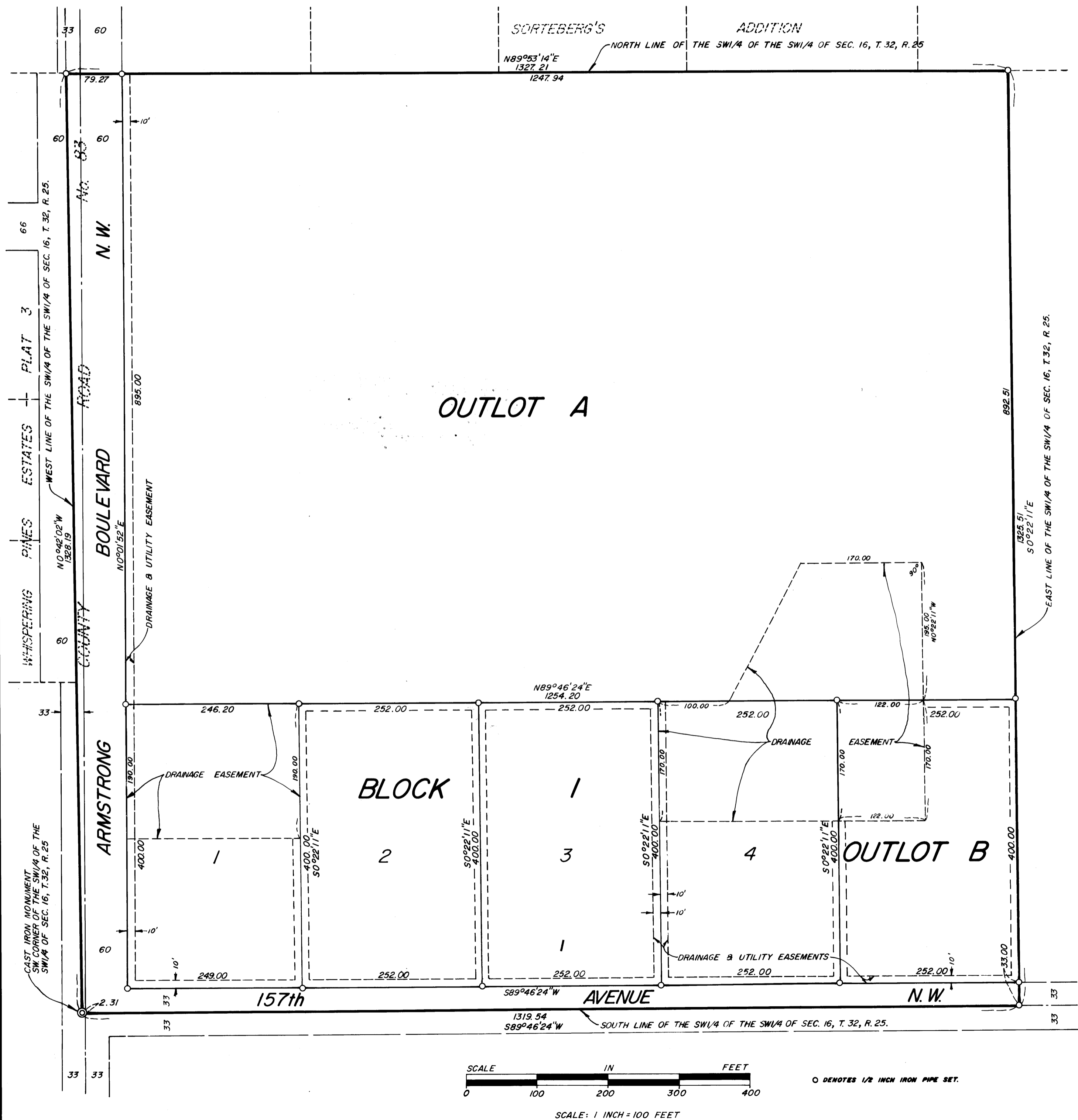
# SORTEBERG'S 2nd ADDITION

CITY OF RAMSEY COUNTY OF ANOKA

628100

OFFICE OF COUNTY RECORDER  
STATE OF MINNESOTA, COUNTY OF ANOKA  
I hereby certify that the within instrument was filed in this office for record on the OCT 13 1983 A.D. 1983 at 9:25 o'clock A.M., and was duly recorded in book 33 of Plat page 24

Del J. Cundahl  
County Recorder  
By Pat Hildebrand  
Deputy



KNOW ALL MEN BY THESE PRESENTS: That Allen E. Sorteberg and Elaine R. Sorteberg, his wife, owners and proprietors of the following described property situated in the County of Anoka, State of Minnesota, to-wit:

The Southwest Quarter of the Southwest Quarter of Section 16, Township 32, Range 25, Anoka County, Minnesota.

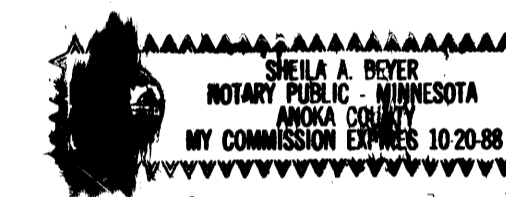
Have caused the same to be surveyed and platted as SORTEBERG'S 2nd ADDITION and do hereby donate and dedicate to the public use forever the Avenue and Boulevard as shown on the plat, also dedicating the easements for drainage and utility purposes as shown on the plat, also dedicating to the County of Anoka the right of access to County Road Number 83 from Lot 1, Block 1. In witness whereof said Allen E. Sorteberg and Elaine R. Sorteberg, his wife, have set their hands this 11th day of October, 1983.

SIGNED:

Allen E. Sorteberg  
Allen E. Sorteberg

Elaine R. Sorteberg  
Elaine R. Sorteberg

STATE OF MINNESOTA ) ss. The foregoing instrument was acknowledged before me this  
COUNTY OF Anoka ) 11th day of October, 1983 by Allen E. Sorteberg  
and Elaine R. Sorteberg, his wife.



Sheila A. Beyer  
Notary Public, Anoka County, Minnesota.  
My Commission Expires 10-20-88

I hereby certify that I have surveyed and platted the land described in the dedication of this plat as SORTEBERG'S 2nd ADDITION; that the plat is a correct representation of said survey; that all distances are correctly shown on said plat in feet and hundredths of a foot; that the monuments have been correctly placed in the ground as shown; that the outside boundaries are correctly designated on said plat; and that there are no wet lands or public highways to be designated on said plat other than are shown thereon.

Jeffrey N. Caine  
Registered Land Surveyor  
Minnesota Reg. No. 12251

STATE OF MINNESOTA ) ss. The surveyors certificate was acknowledged before me, a  
COUNTY OF ANOKA ) Notary Public, this 1st day of September, 1983, by  
Jeffrey N. Caine, Land Surveyor.

Nancy S. Caine  
Notary Public, Anoka County, Minnesota.  
My Commission Expires July 23, 1986

We hereby certify that the City Council of the City of Ramsey, Anoka County, Minnesota, duly accepted and approved the plat of SORTEBERG'S 2nd ADDITION at a regular meeting held this 11th day of October, 1983.

By Thomas H. Blum Mayor By \_\_\_\_\_ Clerk

Checked and approved this 11th day of October, 1983.

By Robert W. Anderson  
County Surveyor, Anoka County, Minnesota

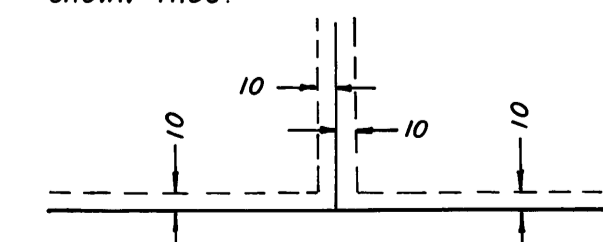


"NO DELINQUENT TAXES AND TRANSFER ENTERED"

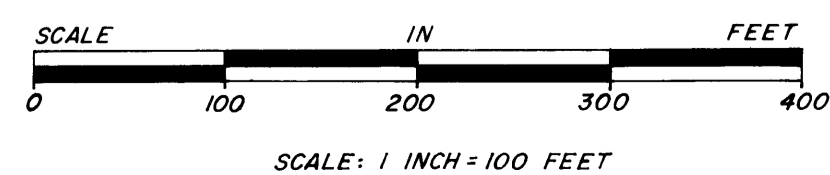
I HEREBY CERTIFY THAT THE TAXES PAID BY THE YEAR 83 ON THE LANDS DESCRIBED WITHIN ARE PAID.  
Donald C. Bailey Williams  
Anoka County Treasurer

Oct 11 19 83  
Charles P. Labre  
Auditor, Anoka County  
By J. P. Kaminski  
Deputy

DRAINAGE AND UTILITY EASEMENTS ARE SHOWN THUS:



NOTE:  
FOR THE PURPOSES OF THIS PLAT THE SOUTH LINE OF THE SW 1/4 OF THE SW 1/4 OF SEC. 16, T. 32, R. 25 IS ASSUMED TO BEAR S. 89° 46' 24" W.



O DENOTES 1/2 INCH IRON PIPE SET.

NO 13931 OCT 13 83 15.00

CAME & ASSOCIATES  
LAND SURVEYORS, INC.