

SORTEBERG'S ADDITION

CITY OF RAMSEY COUNTY OF ANOKA

KNOW ALL MEN BY THESE PRESENTS: That Allen E. Sorteberg and Elaine R. Sorteberg, his wife, owners and proprietors of the following described property situated in the County of Anoka, State of Minnesota, to-wit:

The North Half of the Southwest Quarter of Section 16, Township 32, Range 25, Anoka County, Minnesota, except the following described tract of land:

The south 565.00 feet of the east 660.00 feet, and the north 233.00 feet of the south 798.00 feet of the east 224.00 feet, and the south 412.50 feet of the west 66.00 feet of the east 726.00 feet of said North Half of the Southwest Quarter.

Have caused the same to be surveyed and platted as SORTEBERG'S ADDITION and do hereby donate and dedicate to the public for public use the Avenue, Streets, Lane and Boulevard as shown on the plat, also dedicating the easements for drainage and utility purposes as shown on the plat, also dedicating to the County of Anoka the right of access to County Road Number 83 from Lots 1 and 14 of Block 1 and from Lot 1 of Block 3, also dedicating to the City of Ramsey the right of access to Variolite Street N.W. from Lot 4 of Block 2. In Witness whereof said Allen E. Sorteberg and Elaine R. Sorteberg, his wife, have hereunto set their hands and seals on this 22 day of August, 1979.

SIGNED:

Allen E. Sorteberg
Allen E. Sorteberg

Elaine R. Sorteberg
Elaine R. Sorteberg

STATE OF MINNESOTA) ss. The foregoing instrument was acknowledged before me this 22 day of
COUNTY OF ANOKA) August, 1979 by Allen E. Sorteberg and Elaine R. Sorteberg,
his wife.

Arlene K. Peddycoart
ARLENE K. PEDDYCOART
NOTARY PUBLIC - MINNESOTA
ANOKA COUNTY, MINNESOTA
By Arlene K. Peddycoart
Notary Public, Anoka, Minnesota.

I hereby certify that I have surveyed and platted the land described in the dedication on this plat as SORTEBERG'S ADDITION; that the plat is a correct representation of said survey; that all distances are correctly shown on said plat in feet and hundredths of a foot; that the monuments have been correctly placed in the ground as shown; that the outside boundaries are correctly designated on said plat; and that there are no wet lands or public highways to be designated on said plat other than are shown thereon.

Jeffrey J. Cami
Jeffrey J. Cami
Registered Land Surveyor
Minnesota Reg. No. 12251

STATE OF MINNESOTA) ss. The surveyors certificate was subscribed and sworn to before me, a Notary Public
COUNTY OF ANOKA) this 11 day of JULY, 1977.

Patricia A. Tolpenson
PATRICIA A. TOLPENSEN
NOTARY PUBLIC - ANOKA COUNTY
ANOKA COUNTY, MINNESOTA

Patricia A. Tolpenson
Notary Public, Anoka County, Minnesota

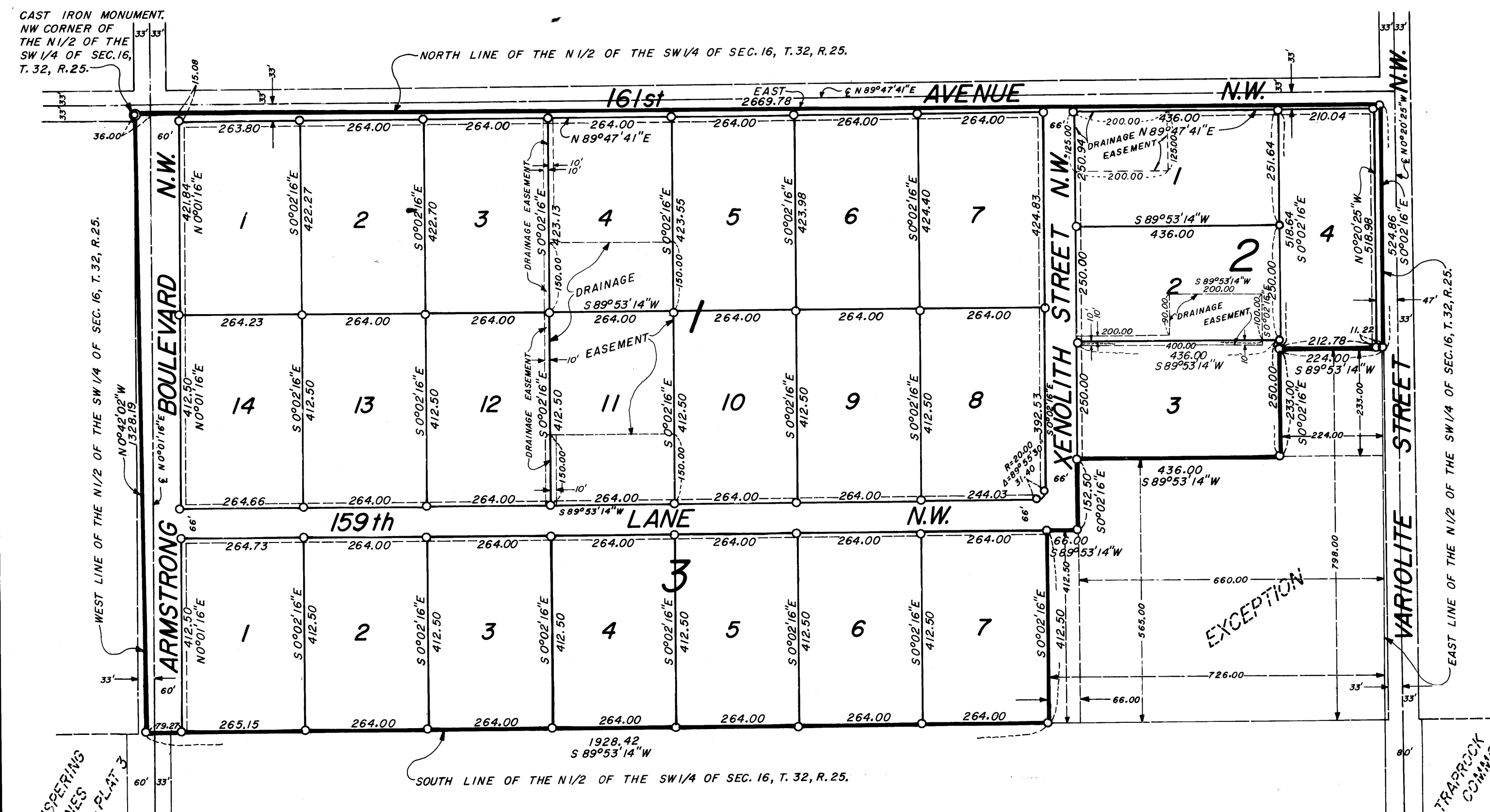
We hereby certify that the City Council of the City of Ramsey, Anoka County, Minnesota, duly accepted and approved the plat of SORTEBERG'S ADDITION at a regular meeting held this 23 day of August, 1979.

By Shawn Hansen Mayor

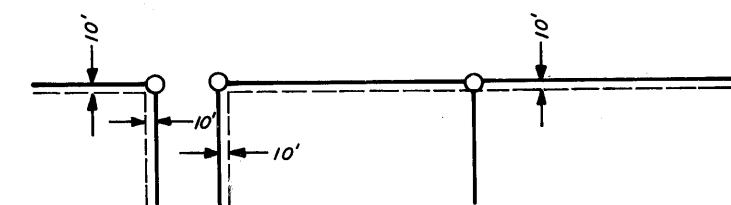
J. J. Schull
J. J. Schull
Clerk

Checked and approved this 23rd day of August, 1979.

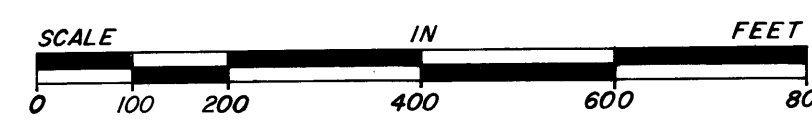
By Roland W. Anderson
Roland W. Anderson
County Surveyor, Anoka County, Minnesota



DRAINAGE & UTILITY EASEMENTS SHOWN THUS:



○ DENOTES 1/2 INCH IRON PIPE.
BEARINGS SHOWN ARE ASSUMED.



SCALE: 1 INCH = 200 FEET

CAINE & O'MALLEY
LAND SURVEYORS, INC.

"NO DELINQUENT TAXES
AND TRANSFER ENTERED"

Aug 23 1979

Charles L. Johnson
Auditor, Anoka County

By J. P. Hammack
Deputy

OFFICE OF COUNTY RECORDER
STATE OF MINNESOTA, COUNTY OF ANOKA
I hereby certify that the within instru-
ment was filed in this office for record
on the AUG 23 1979 A.D., 1979
12 o'clock A.M., and was duly recorded
in book 30 of Plat page 18

Deed J. Sundahl
County Recorder
By J. P. Hammack
Deputy

ACR12 21 01 AUG 23 79

15.00 P-