

SOUTH HIGHWAY 47 INDUSTRIAL PARK

CITY OF ST. FRANCIS
COUNTY OF ANOKA
SEC. 6, TWP. 33, RGE. 24

KNOW ALL PERSONS BY THESE PRESENTS: That City of St. Francis, a municipal corporation under the laws of the State of Minnesota, owner and proprietor of the following described property situated in the County of Anoka, State of Minnesota to wit:

Tract B, REGISTERED LAND SURVEY NO. 230, Anoka County, Minnesota.

And,

The South 250 feet of that part of the Northwest Quarter of the Northeast Quarter and of the Northeast Quarter of the Northeast Quarter of Section 6, Township 33, Range 24, Anoka County, Minnesota, described as follows:

Beginning at a point on the south line of said Northwest Quarter of the Northeast Quarter 1237.5 feet easterly of the southwest corner of said Northwest Quarter of said Section 6, thence in a northerly direction to the north line of said Section 6, to a point distant 1237.5 feet east of the northwest corner of said Northwest Quarter of the Northeast Quarter of Section 6; thence east along said north line to a point of intersection with a line distant 198 feet east as measured at right angles from the first course hereof; thence southerly and parallel with said first course to a point on the south line of the North Half of the Northeast Quarter of said Section 6; thence west, along said south line of the North Half of the Northeast Quarter to the point of beginning.

Has caused the same to be surveyed and platted as SOUTH HIGHWAY 47 INDUSTRIAL PARK and does hereby donate and dedicate to the public for public use forever the public way and also dedicate the easements as shown on this plat for drainage and utility purposes only. Also dedicating to the State of Minnesota, the right of access onto State Trunk Highway No. 47 as shown on this plat.

In witness whereof said City of St. Francis, a municipal corporation under the laws of the State of Minnesota, has caused these presents to be signed by its proper officers this 28th day of January, 2009.

CITY OF ST. FRANCIS

By Jerry J. Tveit Mayor

By Barbara I. Held Clerk

STATE OF MINNESOTA
COUNTY OF Anoka

The foregoing instrument was acknowledged before me this 28th day of January, 2009, by Jerry J. Tveit, Mayor, and Barbara I. Held, Clerk, of City of St. Francis, a municipal corporation under the laws of the State of Minnesota, on behalf of the city.

Barbara A. Vogtlin
Barbara A. Vogtlin

Notary Public, Scotti County, Minnesota

My Commission Expires January 31, 2012

I, Craig E. Johnson, a duly Licensed Land Surveyor under the laws of the State of Minnesota, do hereby certify that I have surveyed or directly supervised the survey of the property described on this plat; prepared this plat or directly supervised the preparation of this plat of SOUTH HIGHWAY 47 INDUSTRIAL PARK; that this plat is a correct representation of the boundary survey; that all mathematical data and labels are correctly designated on this plat; that all monuments depicted on this plat have been, or will be correctly set within one year as indicated on this plat; that all water boundaries and wet lands, as defined in Minnesota Statutes, Section 505.01, Subd. 3, as of the date of this certificate are shown and labeled on this plat; and all public ways are shown and labeled on this plat.

Dated this 9th day of January, 2009.

Craig E. Johnson
Craig E. Johnson, Professional Land Surveyor
Minnesota License No. 44530

STATE OF MINNESOTA
COUNTY OF Anoka

The foregoing Surveyor's Certificate was acknowledged before me this 9th day of January, 2009 by Craig E. Johnson, Professional Land Surveyor, Minnesota License No. 44530.

Jodi E. Ogren
Jodi E. Ogren

Notary Public, Sherburne County, Minnesota

My Commission Expires January 31, 2011

This plat of SOUTH HIGHWAY 47 INDUSTRIAL PARK was approved and accepted by the City Council of the City of St. Francis, Minnesota at a regular meeting thereof held this 19th day of December, 2008, and said plat is in compliance with the provisions of Minnesota Statutes, Section 505.03, Subd. 2.

City Council, City of St. Francis, Minnesota

By Jerry J. Tveit Mayor

By Barbara I. Held Clerk

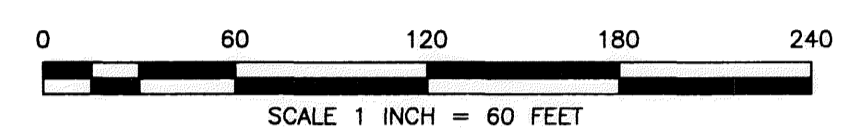
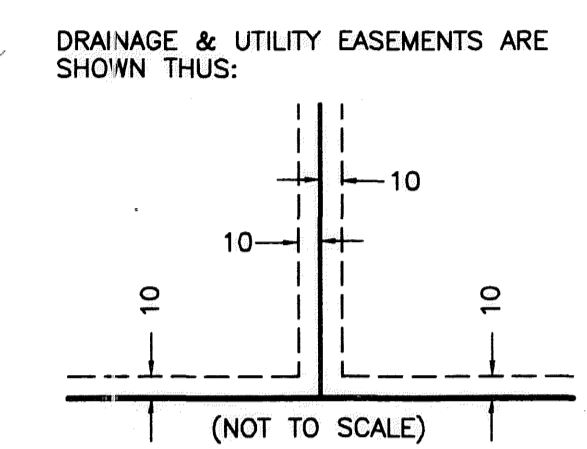
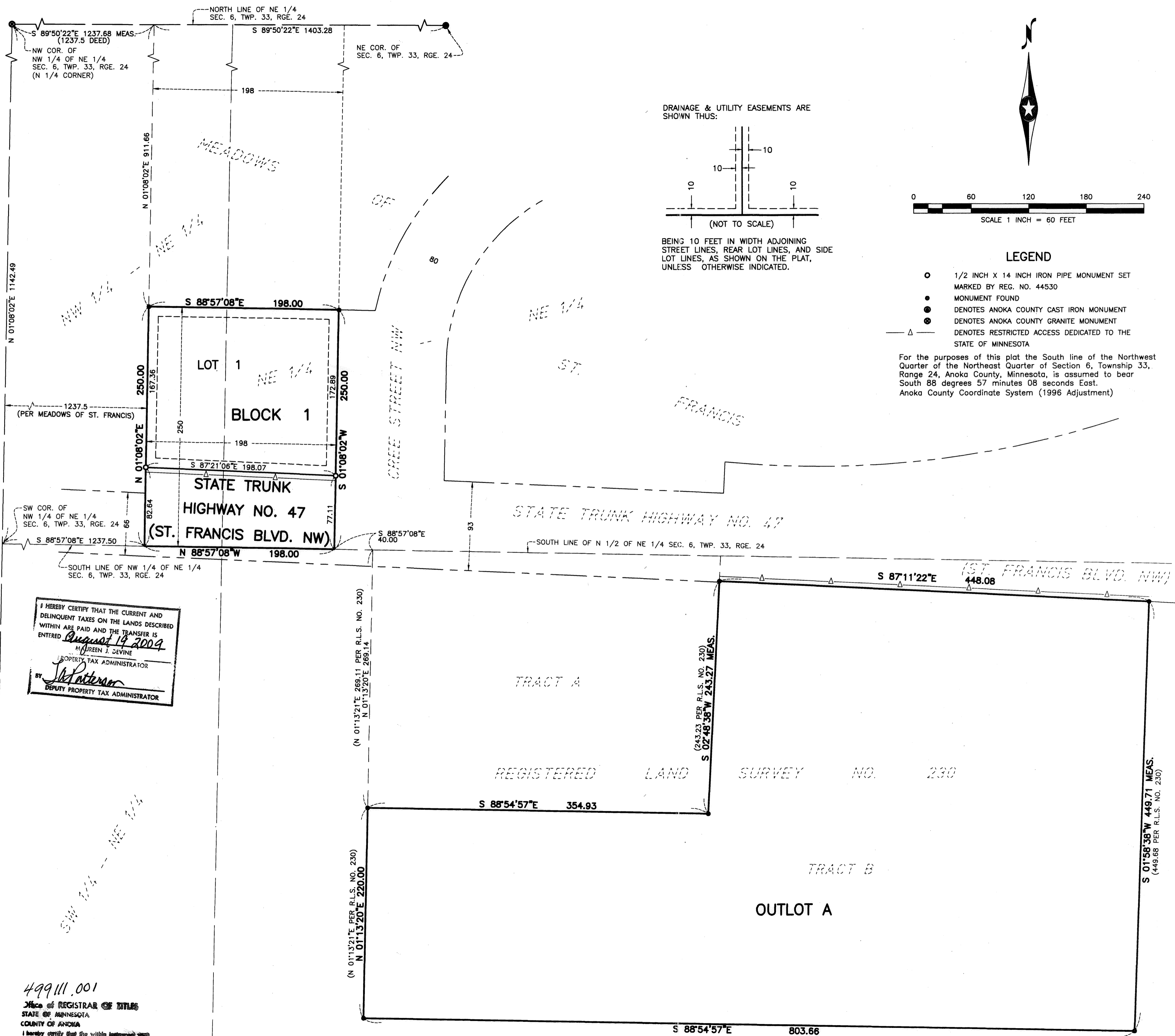
Checked and approved this 19th day of August, 2009.

Larry D. Hoium by Charles F. Gengen, Deputy
Larry D. Hoium, Anoka County Surveyor

2009635.001
OFFICE OF COUNTY RECORDER
STATE OF MINNESOTA, COUNTY OF ANOKA
I hereby certify that the within instrument was filed in this office for record on the 19 Aug, A.D., 2009 at 12:38 o'clock P.M., and was duly recorded in book 75, page 8.
Maureen J. Devine
By JAP

I HEREBY CERTIFY THAT THE CURRENT AND DELINQUENT TAXES ON THE LANDS DESCRIBED WITHIN ARE PAID AND THE TRANSFER IS ENTERED August 19 2009
MAUREEN J. DEVINE
PROPERTY TAX ADMINISTRATOR
BY JAP
DEPUTY PROPERTY TAX ADMINISTRATOR

499111.001
Office of REGISTRAR OF TITLES
STATE OF MINNESOTA
COUNTY OF ANOKA
I hereby certify that the within instrument was filed in this office on 8-19-09 at 12:37 o'clock P.M.
Maureen J. Devine, Registrar of Titles
By JAP
Deputy Registrar of Titles



LEGEND

- 1/2 INCH X 14 INCH IRON PIPE MONUMENT SET MARKED BY REG. NO. 44530
- MONUMENT FOUND
- DENOTES ANOKA COUNTY CAST IRON MONUMENT
- DENOTES ANOKA COUNTY GRANITE MONUMENT
- △ DENOTES RESTRICTED ACCESS DEDICATED TO THE STATE OF MINNESOTA

For the purposes of this plat the South line of the Northwest Quarter of the Northeast Quarter of Section 6, Township 33, Range 24, Anoka County, Minnesota, is assumed to bear South 88 degrees 57 minutes 08 seconds East. Anoka County Coordinate System (1996 Adjustment)

\$56.00 \$56.00